

# WEDNESDAY

WEDNESDAY © 2022 MGM Television.  
Entertainment Inc. WEDNESDAY is a trademark  
of Tee & Charles Addams Foundation.  
© 2024 Metro-Goldwyn-Mayer Studios Inc.  
All Rights Reserved.

TEKKY and the logo design are trademarks of JCW  
Investments, Inc., d/b/a Tekky, and used under license.  
TekkyDesign.com

ITEM #5745175  
MODEL #61112

## WEDNESDAY 7.5-FT ANIMATED LED JOSEPH CRACKSTONE

ATTACH YOUR RECEIPT HERE



Purchase Date \_\_\_\_\_



**DO NOT RETURN THIS ITEM TO THE STORE!**  
If experiencing technical difficulties, please go  
to [www.tekkydesign.com](http://www.tekkydesign.com) for assistance.

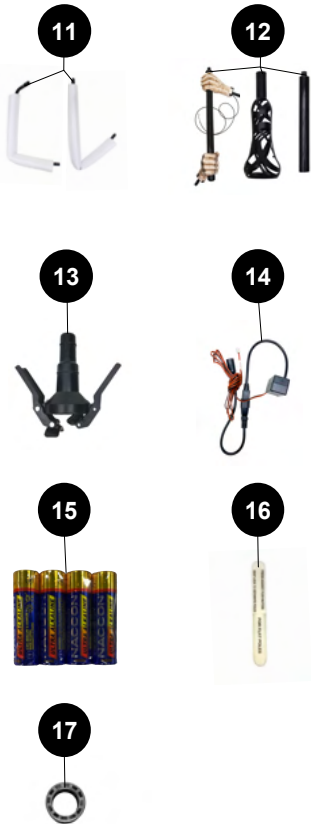
### TABLE OF CONTENTS

Package Contents.....	3
Safety Information and Preparation.....	4
Assembly Instructions.....	5
Care and Maintenance.....	12
Troubleshooting.....	13

## PACKAGE CONTENTS



PART	DESCRIPTION	QUANTITY
1	Metal Base	1
2	Leg Poles	2
3	Lower Legs with Shoes	2
4	Leg Foams	2
5	Pants	1
6	Waist Frame & LED	1
7	Spine Frame with Control Box and 5.9V 2A Adapter	1
8	Head & Body and Fog Hose	1
9	Cape	1
10	Cape Collar	1
11	Arm Poles with Foam	2
12	Staff Poles & Hands	3
13	Fog Clamp	1
14	Fog Cord & Adapter	1
15	AA Batteries	4
16	Snap Lock Removal Tool	1
17	Fog Machine Nozzle Adapter	1



## SAFETY INFORMATION

Please read and understand this entire manual before attempting to assemble, operate, or install the product.

### BATTERY INSTRUCTIONS:

1. Includes (4) AA 1.5-volt batteries. Batteries are not rechargeable.
2. Battery installation and removal should be performed by an adult. Batteries are harmful if swallowed. Keep away from young children.
3. Remove batteries when not in use.
4. Do not mix new and used batteries.
5. Do not mix alkaline, carbon-zinc, nickel-cadmium, rechargeable or different types of batteries.
6. Be mindful to insert batteries with the correct polarity (+/-) as indicated.
7. Remove all exhausted batteries.
8. Rechargeable batteries are only to be charged under adult supervision.
9. Rechargeable batteries are to be removed from the item before being charged.
10. Non-rechargeable batteries are not to be recharged.
11. The supply terminals are not to be short-circuited.
12. Always dispose exhausted batteries properly.
13. DO NOT dispose of batteries in fire, they may leak or explode.

### WARNING

• **Warning: Risk of injury to persons. Read and understand instruction manual before use.**

- Warning: CHOKING HAZARD! Small parts. This item is not a toy. For decoration only.
- Do not turn item on until you have completely finished assembly.
- Intended for indoor use only.
- Stay clear of item while operating.
- Do not place item on uneven ground.
- Do not place weight on item while in operation, except on the metal base.

### PREPARATION

#### ADULT ASSEMBLY REQUIRED

Before beginning assembly of product, make sure all parts are present. Compare parts with package contents list. If any part is missing or damaged, do not attempt to assemble the product.

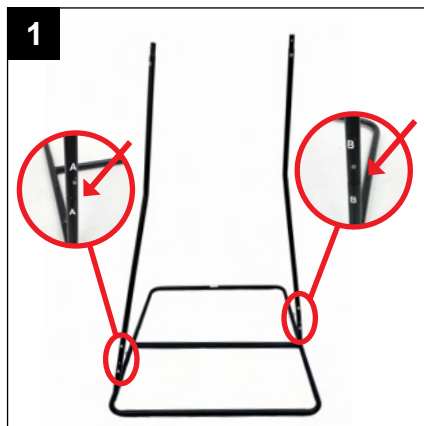
A small crosshead/Phillips screwdriver is required to remove the battery compartment cover on the control box.

**Estimated Assembly Time: 8 minutes**

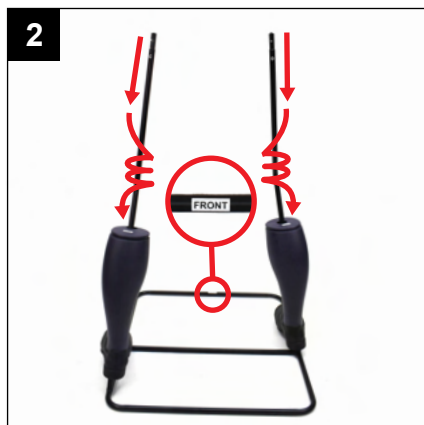
## ASSEMBLY INSTRUCTIONS

1. Insert and snap lock the LEG POLES to the METAL BASE.

(Match A to A), (Match B to B)



2. Slide and twist down the left and right LOWER LEGS WITH SHOES over the LEG POLES. Have the front of the shoes facing towards the FRONT label of the METAL BASE.



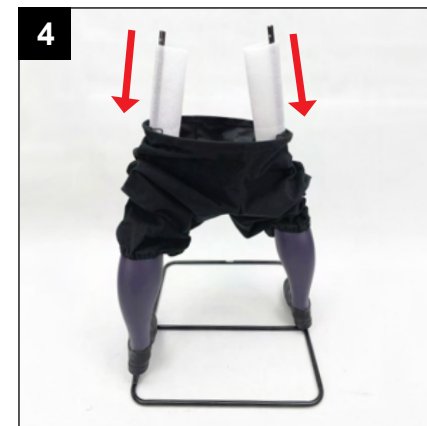
3. With the FRONT label of the pants facing the FRONT label of the metal base, slide the PANTS over the LEG POLES.

Secure the pant leg elastics over the ridges located on the LOWER LEGS.



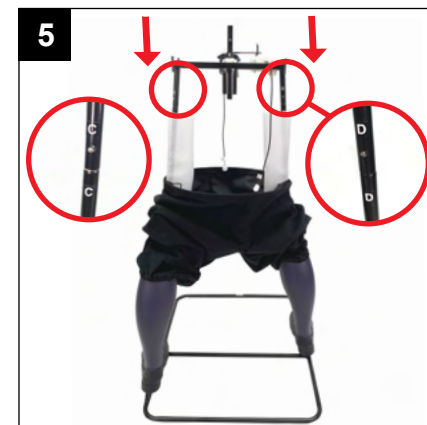
## ASSEMBLY INSTRUCTIONS

4. Slide the LEG FOAMS over the LEG POLES.

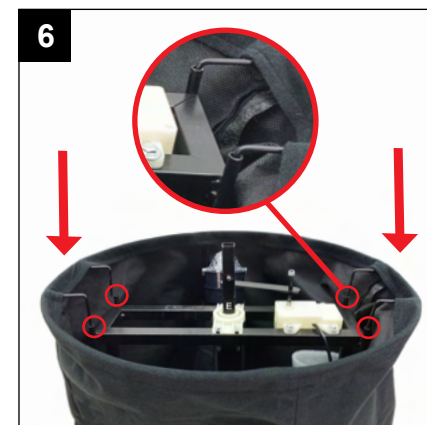


5. Insert and snap lock WAIST FRAME & LED to the LEG POLES.

(Match C to C), (Match D to D)



6. Insert the four posts located on the waist bracket of the PANTS into the WAIST FRAME & LED.



## ASSEMBLY INSTRUCTIONS

7. Insert and snap lock the SPINE FRAME & CONTROL BOX AND 5.9V 2A ADAPTER into the WAIST FRAME & LED.

(Match E to E)



8. Insert and snap lock the HEAD & BODY into the SPINE FRAME & CONTROL BOX.

(Match F to F)

Tie the CAPE strings around the neck of the HEAD & BODY as seen in step 2.

Attach hook and loop of the CAPE COLLAR around the neck of HEAD & BODY as seen in step 3.



9. Slide the LEFT ARM WITH FOAM up the left sleeve. Snap lock it to the HEAD & BODY frame.

(Match G to G)

Slide the RIGHT ARM WITH FOAM up the right sleeve. Snap lock it to the HEAD & BODY frame.

(Match H to H)



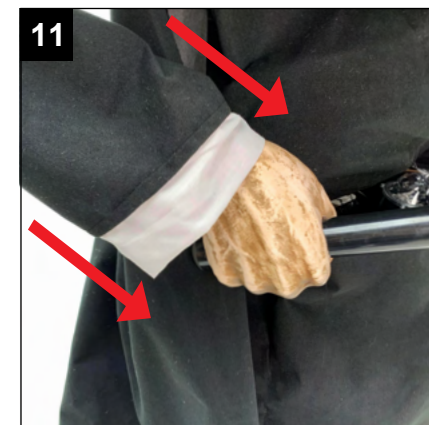
## ASSEMBLY INSTRUCTIONS

10. Insert and snap lock the STAFF POLE WITH HANDS to the LEFT and RIGHT ARM POLES WITH FOAM.

(Match I to I), (Match J to J)



11. Adjust the sleeves over the wrists of the HANDS.



12. Insert and twist lock the MIDDLE STAFF POLE to the STAFF POLE WITH HANDS.

(Match K to K)



## ASSEMBLY INSTRUCTIONS

13. Insert and twist lock the STAFF TOP to the MIDDLE STAFF.

(Match L to L)



14. Connect the wires from the HEAD & BODY to the CONTROL BOX.

(Match M to M), (Match O to O)

Feed the wire from the STAFF POLE & HANDS up the sleeve and connect to the CONTROL BOX.

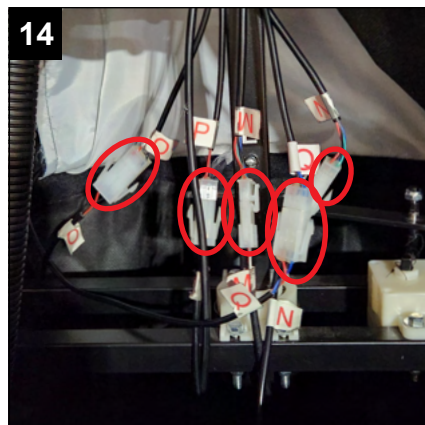
(Match N to N)

Connect the wire from the human sensor to the CONTROL BOX.

(Match P to P)

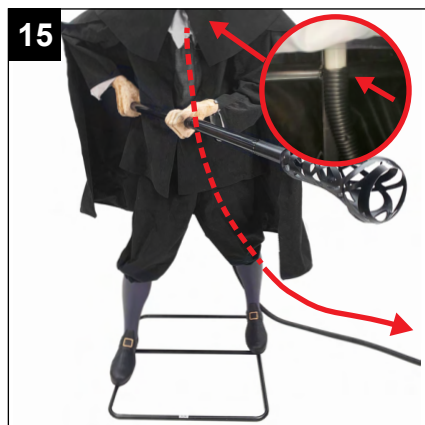
Connect the wire from the WAIST FRAME & LED to the CONTROL BOX.

(Match Q to Q)



15. Untie FOG HOSE from under the shirt. Feed the FOG HOSE over the waist frame out the back of the item.

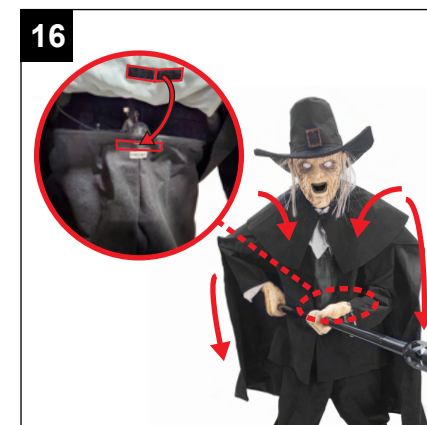
The drain hole will drain excess fog juice.



## ASSEMBLY INSTRUCTIONS

16. Attach hook and loop fasteners located on the front of the shirt to the hook and loop fasteners on the front of the pants

Adjust the cape on the HEAD & BODY.



17. Check that the 5.9V 2A ADAPTER located on the CONTROL BOX is fully secure by twisting it tight. Do not over tighten.

OR

Insert 4 AA batteries (included) into the battery compartment located on the CONTROL BOX.



18. Position the item with the human sensor pointing forward. Move in front of the item, or make a loud sound (clap) for activation **AFTER** your fog machine set-up.

Leave the switch in the OFF position when not in use.

**PROCEED TO FOG MACHINE SETUP.**





## ⚠ FOG MACHINE INFORMATION

Please follow steps 1 through 18 on the assembly instructions before beginning assembly:

1. Your fog machine (400 or 1000 watt) can be used in conjunction with Wednesday™ 7.5-ft Animated LED Joseph Crackstone.
2. Do not use with any other fog machine.
3. FOG MACHINE IS NOT INCLUDED. MUST BE PURCHASED SEPARATELY.
4. Manufacturer does not guarantee the performance of the fog machine.
5. Make sure to use the supplied fog machine components when hooking up to the fog machine, or damage could occur.
6. MAKE SURE THE WEDNESDAY™ 7.5-FT ANIMATED LED JOSEPH CRACKSTONE IS SET TO THE "OFF" POSITION AND YOUR FOG MACHINE IS TURNED OFF WHEN NOT IN USE.

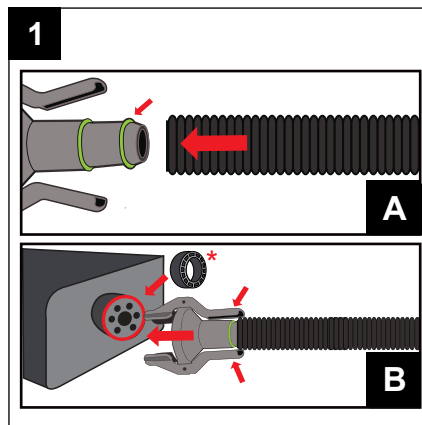
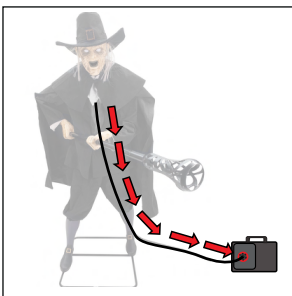
Fog Clamp - PATENT <https://tekkydesign.com/pages/terms-conditions.php>

## FOG MACHINE ASSEMBLY INSTRUCTIONS:

1. Fog hose will click and secure in place.

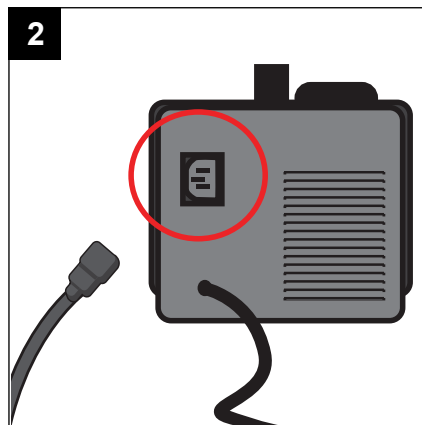
Depress the lever arms of the FOG CLAMP and attach to the fog machine nozzle.  
(See Illustration B)

\* If the FOG CLAMP does not fit on the fog machine nozzle, slide the FOG MACHINE NOZZLE ADAPTER over the fog machine nozzle.  
(See Illustration B)



2. Plug the FOG CORD & ADAPTER into your fog machine. If the fog cord does not fit, see illustration 2a.

- 2a. Plug the FOG CORD into the FOG CORD ADAPTER. Plug FOG CORD ADAPTER into your fog machine.



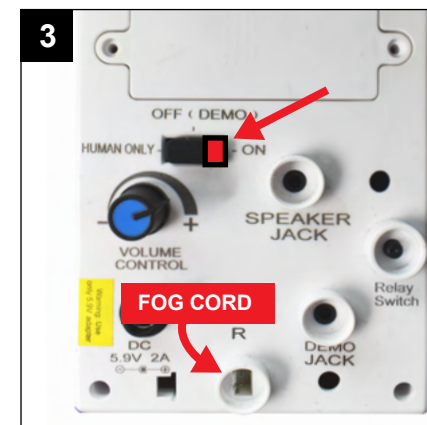
## FOG MACHINE ASSEMBLY INSTRUCTIONS:

3. Plug the other end of the FOG CORD & ADAPTER into the jack labeled R on the CONTROL BOX.

(Match R to R)

Make sure your fog machine is heated up properly, turn your fog machine ON, and then turn the Wednesday™ 7.5-ft Animated LED Joseph Crackstone's switch to the "ON" position. Make a loud sound (clap) or move in front of the item to activate.

If no fog appears, press the relay switch on the CONTROL BOX.

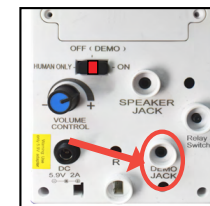


## OPTIONAL DEMO AND EXTERNAL SPEAKER SET UP

### OPTIONAL DEMO SET UP

FOOTPAD IS NOT INCLUDED. MUST BE PURCHASED SEPARATELY.

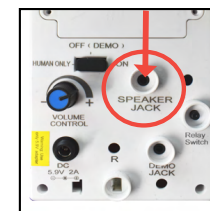
1. Insert the cable from optional footpad into the jack labeled DEMO JACK on the CONTROL BOX.
2. Place the switch in the DEMO position to enable DEMO activation.
3. Step on the footpad or press the external trigger to activate the scary sequence!



### OPTIONAL EXTERNAL SPEAKER SET UP

EXTERNAL SPEAKER IS NOT INCLUDED. MUST BE PURCHASED SEPARATELY.

1. Plug speaker cord into the jack labeled SPEAKER JACK located on the CONTROL BOX.
2. Use volume knob on external speaker to control volume levels.



## CARE AND MAINTENANCE

- STORE IN A COOL AND DRY ENVIRONMENT.
- SURFACE WASHABLE ONLY. DO NOT USE ANY HARSH OR ABRASIVE CLEANING AGENTS.
- REMOVE BATTERIES WHEN STORING ITEM FOR LONG PERIOD OF TIME.
- DESIGNED FOR SEASONAL OPERATION ONLY.
- INTENDED FOR INDOOR USE ONLY.
- NOT INTENDED FOR CONSTANT OR LONG-TERM USE.
- PROPER STORAGE AND USE ARE ESSENTIAL TO THIS ITEM'S LONGEVITY.

## TROUBLESHOOTING

PROBLEM	POSSIBLE CAUSE	CORRECTIVE ACTION
Item will not activate.	<ul style="list-style-type: none"><li>• 5.9V 2A adapter is not plugged in.</li><li>• Switch on control box is not in the ON position.</li><li>• Human sensor on the item may be blocked.</li></ul>	<ul style="list-style-type: none"><li>• Check 5.9V 2A adapter is plugged in and securely inserted into the control box.</li><li>• Move switch to ON position.</li><li>• Move any obstructions away from the front of the item.</li></ul>
You only hear item sound but no item activation.	<ul style="list-style-type: none"><li>• Control Box wires to the Head &amp; Body and Spine frame &amp; Control Box are not connected.</li></ul>	<ul style="list-style-type: none"><li>• Make sure the control box wires labeled M, N, O, P, and Q are securely connected.</li></ul>
Item has no sound while operating.	<ul style="list-style-type: none"><li>• Volume knob is turned all the way down.</li></ul>	<ul style="list-style-type: none"><li>• Adjust volume knob to desired volume.</li></ul>

## FCC REGULATION

### FCC STATEMENT

FCC RULES: This device complies with Part 15 of the FCC Rules. Operation is subject to the following two conditions: (1) this device may not cause harmful interference, and (2) this device must accept any interference received, including interference that may cause undesired operation.

CAUTION: Changes or modifications not expressly approved by the party responsible for compliance could void the user's authority to operate the equipment.

NOTE: This equipment has been tested and found to comply with the limits for a Class B digital device, pursuant to Part 15 of the FCC Rules. These limits are designed to provide reasonable protection against harmful interference in a residential installation. This equipment generates, uses, and can radiate radio frequency energy and, if not installed and used in accordance with the instructions, may cause harmful interference to radio communications. However, there is no guarantee that interference will not occur in a particular installation. If this equipment does cause harmful interference to radio or television reception, which can be determined by turning the equipment off and on, the user is encouraged to try to correct the interference by one or more of the following measures:

- Reorient or relocate the receiving antenna.
- Increase the distance between the equipment and receiver.
- Connect the equipment into an outlet on a circuit different from that to which the receiver is connected.
- Consult the dealer or an experienced radio/TV technician for help.