

**Mainstream® 60" x 32" 6 Jet Whirlpool  
Drop-in Installation****❑ 2949LC.020 Mainstream Whirlpool**

- Acrylic with fiberglass reinforcement
- Drop-in installation
- Textured, slip-resistant tub floor
- Features EverClean® whirlpool system, incorporating a patented antimicrobial additive molded directly into the water circulation piping to inhibit the growth of mold and mildew on the pipes.
- Factory installed and tested whirlpool system
- Single speed, self-draining pump/motor
- 6 Fully adjustable Clean Jets™ including two in back rest area
- Includes Deep Soak® overflow adaptor kit (753174-150). Drain sold separately.
- One color-coordinated air volume control
- Side-mounted, color-coordinated On/Off control
- Dual, molded-in arm rests
- Heater blank included; heater sold separately
- Limited lifetime warranty

**Nominal Dimensions:**

60" x 32-3/4" x 19-3/4"  
(1524 x 832 x 502 mm)

**Compliance Certifications -****Meets or Exceeds the Following Specifications:**

- Underwriters Laboratories - Hydromassage Bathtubs UL 1795
- ASME A112.19.7M for Whirlpool Appliances
- ANSI Z124.1 for Plastic Bathtubs
- ASTM E162 for Flammability
- NFPA 258 for Smoke Density



SEE REVERSE FOR ROUGHING-IN DIMENSIONS  
AND PRODUCT SPECIFICATIONS

**Components Required:**

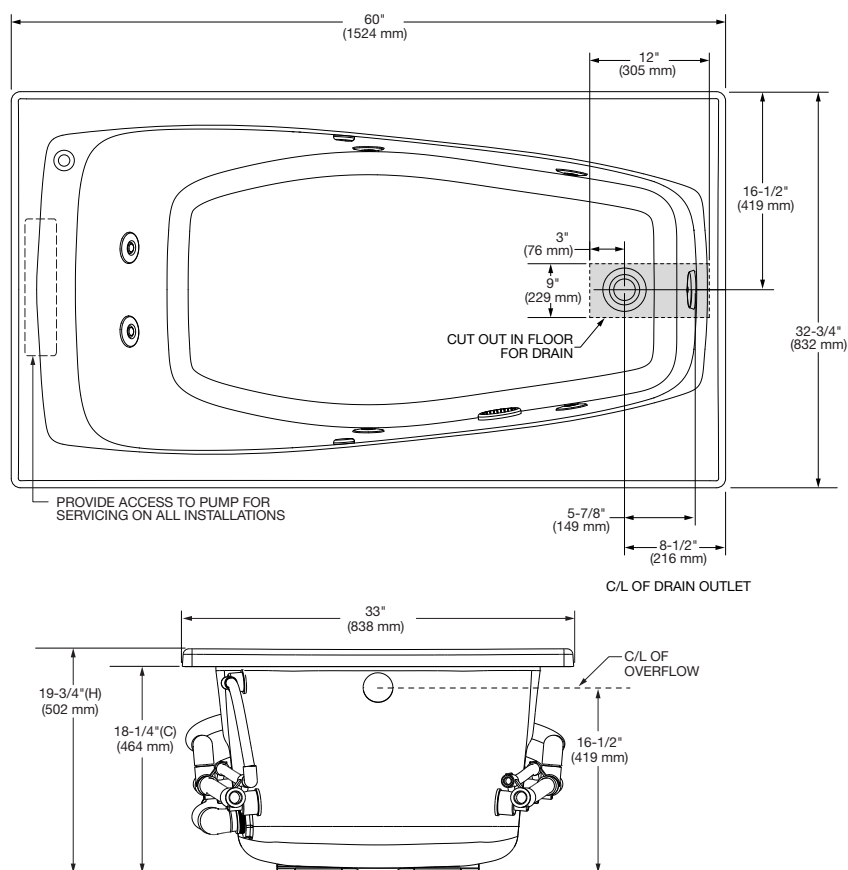
- ❑ Mainstream Whirlpool Drain Kit: 1699500.020

**Optional Components:**

- ❑ 5 Foot EverClean Apron: 9260.018.020  
❑ Universal Tile Bead Kit: 751755-100  
❑ Safe-T-Heater: 9075.120.000

**NOTE:** Whirlpool Heater is designed to maintain water temperature during operation. It will not heat cold water to desired bathing temperature.

# Mainstream® 60" x 32" 6 Jet Whirlpool Drop-in Installation



■ DIMENSIONS OF FIXTURES ARE NOMINAL AND MAY VARY WITHIN THE RANGE OF TOLERANCES ESTABLISHED BY ANSI STANDARDS Z124.1 AND A112.19.7.

## GENERAL SPECIFICATIONS FOR 2949LC WHIRLPOOL

INSTALLED SIZE	60 x 32-3/4 x 19-3/4 In. (1524 x 832 x 502 mm)
WEIGHT	77 Lbs. (35 Kg.)
WEIGHT w/WATER	536 Lbs. (243 Kg.)
GAL. TO OVERFLOW	55 Gal. (208 L.)
MIN. OPERATING GAL.	47 Gal. (155L.)
BATHING WELL AT SUMP	40-1/2 x 20-1/2 In. (1029mm x 521 mm)
BATHING WELL AT RIM	52-1/2 x 26-1/2 In. (1334mm x 673 mm)
WATER DEPTH TO OVERFLOW	15-3/4 In. (400 mm)
FLOOR LOADING	43 Lbs./Sq. Ft. (187 Kgs/Sq. m.) (PROJECTED AREA)

## WHIRLPOOL ELECTRICAL SPECIFICATIONS

PUMP	1.25 HPR, 9.7 AMPS, 120V.
------	---------------------------

### NOTES:

BATH CAN BE INSTALLED EITHER ABOVE OR BELOW FLOOR LINE AS PIER, ISLAND, OR PENINSULA TYPE INSTALLATION. SUPPORT OF BATH BY SUMP BEDDING. SUPPORT AND ENCLOSING MATERIAL BY OTHERS.

■ REFER TO INSTALLATION INSTRUCTIONS SUPPLIED WITH WHIRLPOOL FOR ADDITIONAL INFORMATION.

OPTIONAL 3 WALL TILING BEAD. KIT AND APRON MUST BE ORDERED SEPARATELY.

FITTINGS NOT INCLUDED AND MUST BE ORDERED SEPARATELY.

PROVIDE SUITABLE REINFORCEMENT FOR ALL SUPPORTS.

**IMPORTANT:** Dimensions of fixtures are nominal and may vary within the range of tolerances established by ANSI Standard Z124.1. These measurements are subject to change or cancellation. No responsibility is assumed for use of superseded or voided pages.