

Energizer[®]

**SMART WIFI
PLUG**



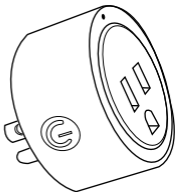
QUICK START GUIDE

EIX3-1003-WHT v2.1

GETTING STARTED

Thank you for choosing the **Energizer**® Smart Plug. This quick start guide will help you with setup and installation.

Package Includes:



ESTIMATED SETUP



**QUICK
START
GUIDE**

- Smart Plug
- Quick Start Guide

What You Need:



App



2.4GHz



5GHz



2.4GHz WiFi



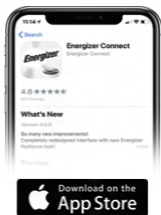
Before setup, make sure your phone is connected to the 2.4GHz WiFi network that your device will be placed on. You may also need to turn on location and Bluetooth to find nearby networks.



CONNECT THE DEVICE

STEP 1

Download the free **Energizer** Connect app from the App Store (for iPhones) or Google Play Store (for Android phones).



STEP 2

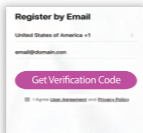
Make sure your mobile device is connected to your **2.4GHz WiFi** network.


Open the app and **click** "Create Account" by following the on-screen instructions.



After your initial sign in, your app will remember your password and log you in automatically.

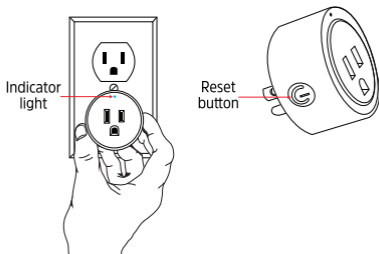
You can also choose to manually log out under Settings in the Main menu.



 You may need to check your Spam folder for the verification code

STEP 3

Plug the Smart Plug into a wall outlet.



Note: The indicator light on the plug should start blinking rapidly (about 4 times per second) for EZ pairing mode.

LED Behavior	Device Status
Flashing Rapidly	EZ Pairing
Flashing Slowly	AP Pairing

Button Operation	
Single Click	On/Off
Hold for 5 Seconds	Enter/Cycle through Pairing Modes

STEP 4

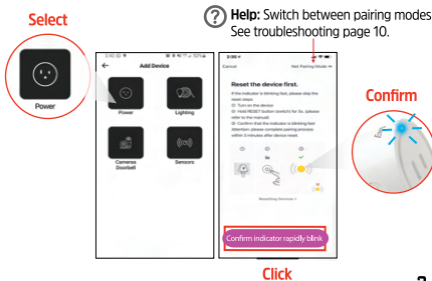
After logging in, **click** “+” on the top right of the screen and **select** “Add device”.



STEP 5

Select the Power category and **confirm** that the indicator light is still rapidly blinking.

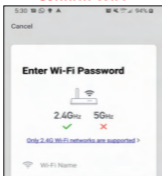
Click “Confirm indicator rapidly blink”.



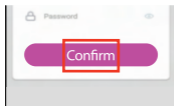
STEP 6

Confirm that the displayed **WiFi** network is your **2.4GHz WiFi** network, **enter** your WiFi password and **click** “Confirm”.

Confirm WiFi



Enter and Click

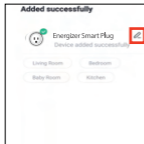
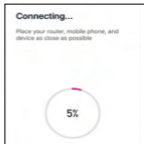


 **Help:** If you need information about **2.4GHz WiFi** networks, click the link to go to our Connect FAQs on our website.

STEP 7

Your Smart Plug will now be connected to the network. Confirm the settings for your device and then **Click** “Done”.

PROCESSING TIME



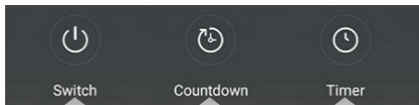
Your **Energizer**® Smart Plug is now ready to use. You can now set schedules, timers and control your Smart Plug remotely. We hope you enjoy using your **Energizer**® Smart Plug. For frequently asked questions and instruction videos, please visit our website at www.energizerconnect.com.

INSTALLATION AND USE



The Smart Plug is not suitable for appliances that require more than **15 amps**. Please check the device's electrical requirements before plugging in.

When you access the device in your app, you will see three buttons at the bottom



Click to turn ON/OFF

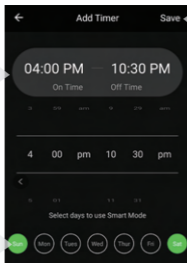
Set a countdown to switch to the opposite state the plug is currently in
Ex. If the plug is ON, setting a Countdown will turn it OFF

Set a schedule (see below)

Setting the Timer Schedule

1. Select a TURN ON time and a TURN OFF time

2. Select what days you want this schedule to repeat



3. Click SAVE when finished setting the timer

VOICE ACTIVATION

To enable voice access for your Smart Plug, you will need to link the **Energizer**® Connect skill with your choice of voice assistant.

Voice Activation for Alexa

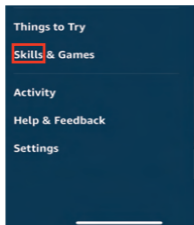
Make sure your Alexa device is installed and set up first.

STEP 1

Open your Alexa app.

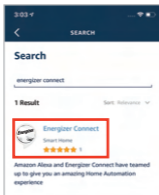
STEP 2

Open the menu to search for “Skills”.



STEP 3

Search for & **choose** **Energizer**® Connect.



Choose

STEP 4

Authorize your account with the Alexa skill using the username and password from your **Energizer**® Connect app.

STEP 5

Using the name you assigned your Smart Plug, you can ask Alexa to turn on/off your Smart Plug.

Ex: “Alexa, turn on bedroom fan”.

Voice Activation for the Google Assistant

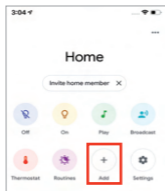
Make sure your Google Assistant device is installed and set up first.

STEP 1

Open your Google Home app.

STEP 2

Click the "+" to add a new device.



Click

STEP 3

Click "Set up device".



Click

STEP 4

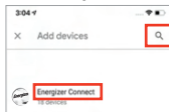
Click "Have something already set up?"



Click

STEP 5

Search for & choose **Energizer® Connect**.



Choose

STEP 6

Authorize your account with the Google Assistant skill using the username and password from your **Energizer® Connect** app.

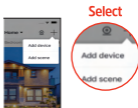
STEP 7

Using the name you assigned your Smart Plug, you can ask the Google Assistant to turn on/off your Smart Plug. Ex: "Ok Google, turn on bedroom fan".

Voice Activation for Siri

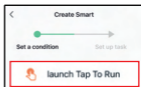
STEP 1

Open the Energizer Connect app and click the “+” at the top right of the Home Screen and select “Add Scene”



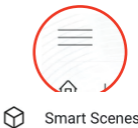
STEP 2

Select “launch Tap To Run” and fill out the information.



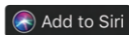
STEP 3

Once your Smart Scene is created, return to the Smart Scene manager by clicking on the three lines in the top left of the Home Screen to open the main Menu, and then selecting “Smart Scenes”.



STEP 4

Click the button at the bottom of the screen that says “Add to Siri”.



STEP 5

Select your new Tap to Run Smart Scene from the list and click “Add to Siri”.



Step 6:

Create a custom phrase for Siri to run your Smart Scene.
(this can be any verbal command)

Now Siri can use your voice and custom verbal command to turn your Smart Plug on or off, adjust the device at the same time as your other smart devices, or whatever you've set up as your Tap To Run Smart Scene.

To see Warranty information and Certification Legal warnings, please see our website.

www.energizerconnect.com

©2020 Energizer. Energizer, Energizer Bunny design and certain graphic designs are trademarks of Energizer Brands, LLC and related subsidiaries and are used under license by Jem Connected IOT, Inc. All other brand names are trademarks of their respective owners. Neither Jem Connected IOT, Inc. nor Energizer Brands, LLC is affiliated with the respective owners of their trademarks.

Apple and the Apple logo are trademarks of Apple Inc., registered in the U.S. and other countries.

App store is a service mark of Apple Inc.

Google, Android and Google Play are trademarks of Google LLC.

Amazon, Alexa and all related logos are trademarks of Amazon.com, Inc. or its affiliates.

FCC Compliance

This device complies with Part 15 of the FCC. Operation is subject to the following two conditions: (1) this device may not cause harmful interference, and (2) this device must accept any interference received, including interference that may cause undesired operation.

Changes or modifications not expressly approved by the party responsible for compliance could void the user's authority to operate the equipment.

HAVING TROUBLE WITH SETUP?

Don't return this product to the retailer, we're here to help

Please call us at 888-693-4189 or visit www.energizerconnect.com for video tutorials, updated manuals and more FAQs for your device.

My device won't connect to my network!

- 1.** Make sure you are connected to your **2.4 GHz network** and your device is blinking red before you start trying to connect your device.
- 2.** You may need to reset your device if you are having trouble. Check out page 2 for the location of your device's reset button.
- 3.** To allow the app to locate the network, you may need to allow permissions for location and turn on your Bluetooth.
- 4.** If you are not certain what type of network you have, contact your Internet Service Provider and ask them to create a separate, dedicated **2.4GHz network**. You can also do this manually in your router's settings.
- 5.** Try moving to a spot closer to your router for connecting.
- 6.** You can also purchase a WiFi extender to increase your WiFi range and strength.
- 7.** In some cases, you can try using the secondary pairing mode by clicking "Net Pairing Mode" on the Add Device screen (see bottom of page 3). Follow the on-screen instructions.