

Note:

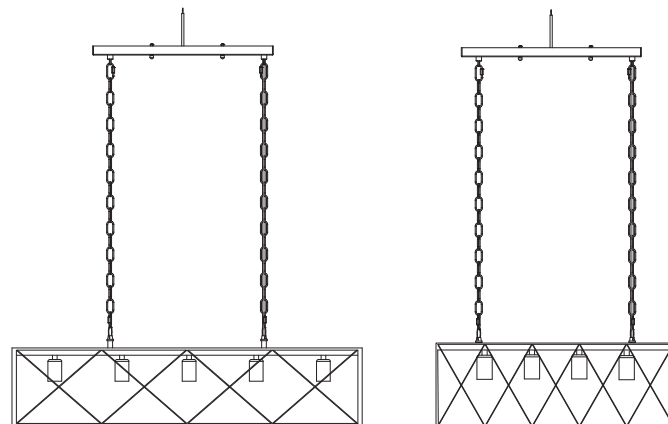
English

1. The lamps may only be installed by authorized and qualified technicians according to the valid regulations for electrical installation.
2. The manufacturer does not accept any responsibility for injuries or damage resulting from improper use of the light.
3. Attention! Before starting the installation work, make sure that the mains power line is voltage-free—turn off safety cutout or unscrew the protection fuse. The switch must be “OFF”.
4. Warning! Before drilling the mounting holes, make sure that no gas, water or electricity pipes and wires can be drilled through or damaged in your chosen mounting location.
5. Description of the supply terminals: L = Phase N = Neutral conductor ⊕ = Earthed conductor.

DINGLIGHTING

Depuley

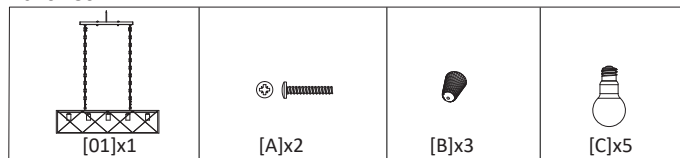
Product Instruction



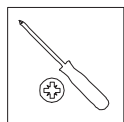
WS-FND55-60B	WS-FND54-60B
5xMAX.60W	4xMAX.60W
110-120V	
Color:Black	
Material:Metal	

Current range of telephone after-sales service
 Language: English only Country: USA and Canada
 Customers from other countries are advised to contact us via email.
AFTER-SALES SERVICE Email: all-support@depuley.com
AFTER-SALES SERVICE TEL: (888) 985-3006 Depuley
(888) 986-0020 DLLT
Mon-Fri 9am - 5pm (PST)

Part list:



You will need:

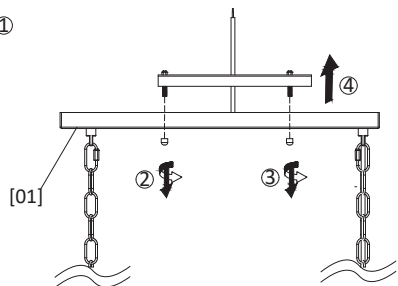
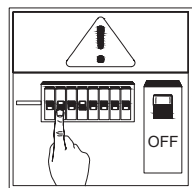


Installation Steps:

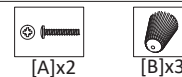
01



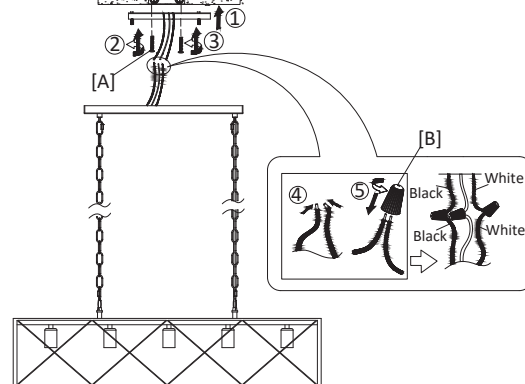
[01]x1



02



[A]x2 [B]x3



03



[C]x5

