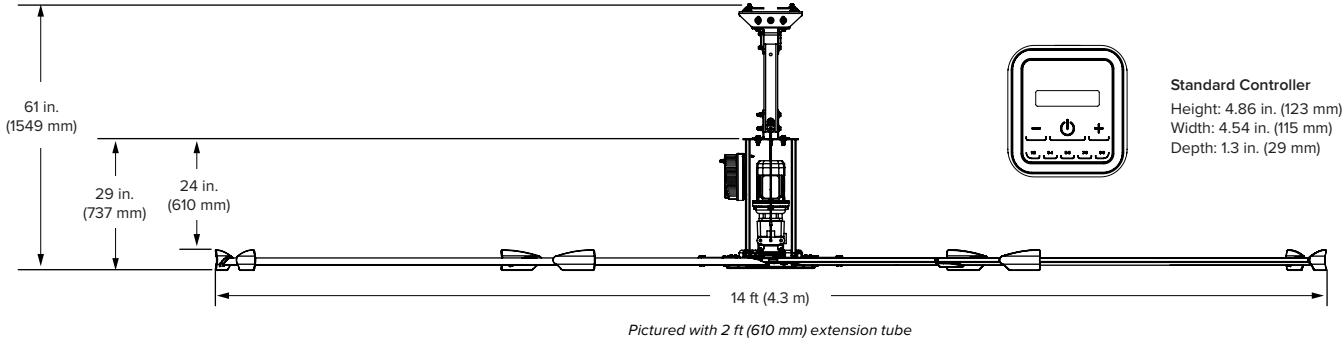


SHOPFAN

PART OF THE BASIC 6 FAMILY OF FANS



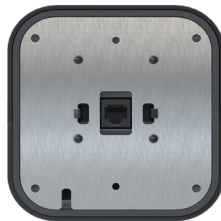
Lightweight and efficient, ShopFan by Big Ass Fans is an powerful and economical fan package for workshops, small manufacturing facilities, and industrial spaces. Easy installation, superb performance, and year-round energy savings — just what you'd expect from Big Ass Fans.



Technical Specifications								
Model	Diameter (A)	Weight ¹	Max speed	Airfoil clearances ²	Input power and required breaker	Max amps	Motor	Max Operating Temperature
PF62-14	14 ft (4.3 m)	192 lb (87 kg)	110 RPM	10 ft (3 m) above floor 2 ft (0.6 m) on sides 5 ft (1.5 m) below ceiling deck	200–240 VAC, 50/60 Hz, 1 Φ , 25 A	13.3 A	1.5 hp (1.1 kW)	104°F (40°C)

Construction Features				
Airfoils	Motor and Drive ³	Certifications	Mounting	Multi-Point Safety
Six patented airfoils (mill finish) Cuffed winglets eliminate wind noise (BAF yellow)	Industrial-grade motor and gearbox feature inline helical-cut gears for efficient, durable, and reliable operation Onboard NEMA 4X variable speed drive	 UL Standard 507 and CSA Standard 22.2 No. 113	2 ft (30.48 cm) extension tube Standard upper mount installs to I-beams and bar joists	Double safety cable system, airfoil retainers, hub safety clips, Grade 8 hardware, and fire relay (must be wired if required by local code)

Standard Controller	
Construction	Controls
Made from durable UV-resistant materials Rated IP55 Intuitive touchscreen interface	On/Off and variable speed control Password protection Powered by fan drive



¹ Weight does not include mount or extension tube.
² Measure the distance from the tip of the winglet to the ceiling or major obstruction.
³ The VFD is not preinstalled on the fan. Mounting the VFD onboard the fan requires field installation.

Lead times may vary.
See full warranty for coverage information.