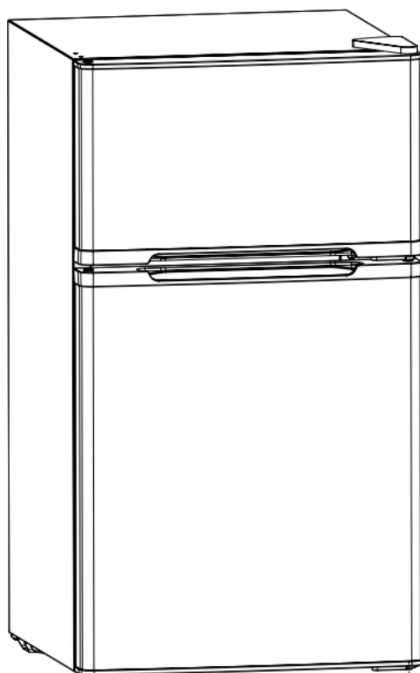


# USER MANUAL

## Freezer & Refrigerator



BCD-87

To ensure proper use of this appliance and your safety, please read the manual carefully before operating the appliance.

If you have any question about the product such as missing parts, damaged products, product assembling and operation, please contact us via customer service number: 213-4467172 or 661-4358826.

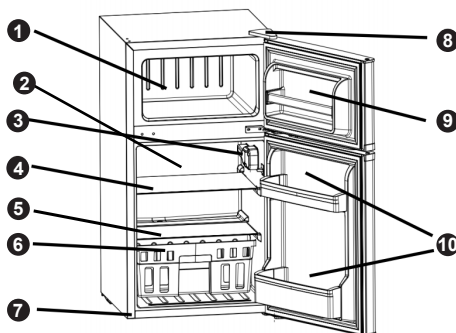
# TABLE OF CONTENTS

---

<b>KNOWING YOUR UNIT.....</b>	<b>1</b>
<b>IMPORTANT SAFETY INSTRUCTIONS.....</b>	<b>1</b>
<b>PREPARING FOR YOUR FIRST USE.....</b>	<b>3</b>
Unpacking Your Unit.....	3
Locating Your Unit.....	3
Connecting Your Unit.....	3
<b>OPERATING YOUR UNIT.....</b>	<b>4</b>
Temperature Control.....	4
Ice Tray.....	4
The Freezer Compartment.....	4
Defrost.....	4
Re-Install The Interior Light.....	5
<b>CLEANING AND MAINTENANCE.....</b>	<b>6</b>
Cleaning Your Unit.....	6
Long-Term Storage.....	6
Moving Your Unit.....	6
Energy Saving Tips.....	6
<b>TROUBLESHOOTING.....</b>	<b>7</b>

# KNOWING YOUR UNIT

- (1) Freezer Compartment
- (2) Refrigerator Compartment
- (3) Temperature Control  
(with integrated interior  
light assembly)
- (4) Shelf
- (5) Glass Shelf (also used as  
Moisturizing Cover of the  
Crisper)
- (6) Crisper
- (7) Leveling Leg
- (8) Top Cover
- (9) Freezer Door Bin
- (10) Refrigerator Door Bin



**⚡ WARNING ⚡** : Never touch the interior of the Freezer Chamber or frozen foods in the compartment with wet hands as this could result in frostbite.

## IMPORTANT SAFETY INSTRUCTIONS

<p><b>⚡ WARNING ⚡</b></p>	<p>To reduce the risk of fire, electrical shock, or injury when using your refrigerator, follow these basic precautions:</p>
<ul style="list-style-type: none"> <li>• Read all instructions before using the refrigerator.</li> <li>• <b>DANGER or WARNING:</b> Risk of child entrapment.</li> <li>• To avoid the possibility of child entrapment, please take the following precautions before throwing out the refrigerator.             <ul style="list-style-type: none"> <li>- Remove all doors from the unit.</li> <li>- Leave the shelves in place so that children may not easily climb inside.</li> </ul> </li> <li>• Never allow children to operate, play with, or crawl inside the refrigerator.</li> <li>• Never clean refrigerator parts with flammable fluids. The fumes can create a fire hazard or explosion.</li> <li>• Do not store or use gasoline or any other flammable vapors and liquids in the vicinity of this or any other refrigerator. The fumes can create a fire hazard or an explosion.</li> </ul>	



## WARNING

- 1) **WARNING**—Keep ventilation openings, in the appliance enclosure or in the built-in structure, clear of obstruction.
- 2) **WARNING**—Do not use mechanical devices or other means to accelerate the defrosting process, other than those recommended by the manufacturer.
- 3) **WARNING**— Do not damage the refrigerant tubing which will increase the risk of a leak when handling, moving, or using the refrigerator.
- 4) **WARNING**—Do not use electrical appliances inside the food storage compartments of the appliance, unless they are of the type recommended by the manufacturer.
- 5) **WARNING**—**DANGER**: Never allow children to play with, operate, or crawl inside the refrigerator. Risk of child entrapment. Before you throw away your old refrigerator or freezer:
  - Take off the doors
  - Leave the shelves in place so that children may not easily climb inside.
- 6) The appliance has to be unplugged before carrying out user maintenance on the appliance.
- 7) This appliance can be used by children aged 8 years and above and persons with reduced physical sensory or mental capabilities or lack of experience and knowledge if they have been given supervision or instruction concerning use of the appliance in a safe way and understand the hazards involved. Children should not play with the appliance. Cleaning and maintenance should not be made by children without supervision.
- 8) If the component part is damaged, it must be replaced by the manufacturer, its service agent or similarly qualified persons in order to avoid a hazard.
- 9) Please abandon the refrigerator according to local regulations as the unit contains flammable blowing gas and refrigerant.
- 10) Follow local regulations regarding disposal of the appliance due to flammable refrigerant and blowing gas. All refrigeration products contain refrigerants, which under the guidelines of federal law must be removed before disposal. It is the consumer's responsibility to comply with federal and local regulations when disposing of this product.
- 11) This appliance is intended to be used in household and similar environments such as
  - staff kitchen areas in shops, offices and other working environments;
  - farm houses and by clients in hotels, motels and other residential type environments;
  - bed and breakfast type environments;
  - catering and similar non-retail applications.
- 12) Do not store or use gasoline or any inflammable liquors and liquids inside or in the vicinity of refrigerator.
- 13) Do not use an extension cord with this appliance. If the power cord is too short, have a qualified electrician install an outlet near the appliance. Use of an extension cord can negatively affect the unit's performance.



Caution: risk of fire



IT IS HAZARDOUS FOR ANYONE OTHER THAN AUTHORIZED SERVICE PERSONNEL TO CARRY OUT SERVICES OR REPAIRS INVOLVING THE REMOVAL OF COVERS.



TO AVOID THE RISK OF AN ELECTRICAL SHOCK. DO NOT ATTEMPT REPAIR YOURSELF.



# PREPARING FOR YOUR FIRST USE

## Unpacking Your Unit

- Remove the exterior and interior packing.
- Before connecting the refrigerator to the power source, let it stand upright for approximately 4 hours. This will reduce the possibility of a malfunction in the cooling system from improper handling during transportation.
- Clean the interior surface with lukewarm water using a soft cloth. (Cleaning instruction on page 6)

## Locating Your Unit

- This appliance is designed to be free-standing only, and should not be recessed or built-in.
- Place your refrigerator on a floor that is strong enough to support the refrigerator when it is fully loaded.
- Allow 5 inches of space between the back and sides of the refrigerator, which allows the proper air ventilation. Adjust the feet to keep the refrigerator level.
- Locate the refrigerator away from direct sunlight and sources of heat (stove, heater, radiator, etc.). Direct sunlight may affect the acrylic coating and heat sources may increase electrical consumption. Ambient temperature below 50°F (10°C) or above 85°F (29.4°C) will hinder the performance of this appliance. **This unit is not designed for use in a garage or any other outside installation.**
- Avoid locating the refrigerator in moist areas.
- After plugging the appliance into a wall outlet, turn the unit on and allow the unit to cool down for 2-3 hours before placing food in.

## Connecting Your Unit

### ⚡WARNING⚡

Improper use of the grounded plug can result in the risk of electrical shock. If the power cord is damaged, have it replaced by an authorized service center.

The power cord of this refrigerator is equipped with a three-prong plug that mates with standard three-prong wall outlets to minimize the possibility of electrical shock. Plug the refrigerator into a dedicated, properly installed and grounded wall outlet.

Do not, under any circumstances, cut or remove the three-prong ground plug from the power cord.

This refrigerator requires a standard 115VAC, 60Hz electrical outlet with three-prong ground.

**This unit is not designed to be installed in an RV or used with an inverter.**

The cord should be secured behind the refrigerator and not left exposed or dangling to prevent accidental injury.

Never unplug the refrigerator by pulling the power cord. Always grip the plug firmly and pull it straight out from the receptacle.

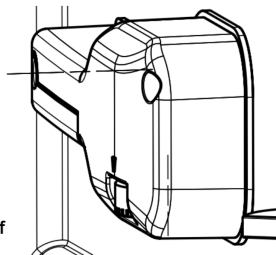
Do not use an extension cord with this appliance. If the power cord is too short, have a qualified electrician or service technician install an outlet near the appliance. Use of an extension cord can negatively affect the performance of the unit.

Any question concerning power and/or grounding should be directed toward a certified electrician or an authorized service center.

# OPERATING YOUR UNIT

## Temperature Control

- Your refrigerator has one control for regulating the temperature. The temperature control is located on the top center of the refrigerator compartment.
- The first time you turn the unit on, adjust the temperature control knob to "3" and run for at least 2 hours before putting foods in.
- The range of the refrigerator temperature control is from "1" (cold) to position "3" (the coldest). Adjust the temperature control to the setting that best suits your needs. The setting of "2" should be appropriate for home or office refrigerator use.
- Turning the temperature control knob to "0" position to stop the cooling cycle but does not shut off the power to the unit.

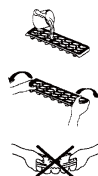


### **NOTE:**

- If the unit is unplugged and loses power, you must wait 3 to 5 minutes before restarting the unit. If you attempt to restart it immediately, the refrigerator will not start.
- Large amounts of food will lower the cooling efficiency of the appliance.
- Do not place the foods on the air outlet, and leave spaces for airflow.
- If you choose to change the temperature setting, adjust the temperature control by one gear at a time. Allow several hours for temperature to stabilize between adjustments.

## Ice Tray

- Recommended temperature control setting for ice making is "3".
- Fill the ice cube tray (2/3 capacity) with cold water and place the tray on the bottom of the freezer compartment to freeze properly.
- To eject the ice cubes from the tray, place over the ice bucket and twist slightly.
- Re-set the temperature control to setting "2".



## The Freezer Compartment

- This compartment is designed for the long-term storage of frozen food.
- The storage life of frozen foods varies and the recommended storage time should not be exceeded.
- Place frozen food into the freezer as quickly as possible after purchase. If there are instructions on the packet, carefully follow these instructions regarding storage times.

## Defrost

This unit is not designed to defrost automatically. In order to prevent damage to the interior liner of the unit from excessive frost build-up, please manually defrost the unit every 3 months or when ice / frost is approximately  $\frac{1}{4}$ " thick inside the freezer compartment, whichever comes first.

- Remove all contents from the freezer compartment. Adjust the temperature control to position “0” .
- Leave the freezer door open to allow accumulated ice / frost to melt. Remove large pieces of ice as needed. Do not use hot water or other electric heating devices to melt the accumulated ice.
- After defrosting, remove the melted ice / water, wipe and dry the freezer compartment with a soft cloth. In the event that the ice is not visibly present in the freezer compartment, please allow the evaporator located behind the freezer wall to completely defrost for approximately 2 hours before restarting the unit.

### **Re-Install The Interior Light**

#### **NOTE:**

Unplug the appliance before removing the light bulb. All parts removed must be saved to re-install the light bulb.

- Remove the fixing screws for the temperature control.
- Open the lamp cover plate.
- Remove the used light bulb and separate the terminals.
- Install the new light bulb.
- Cover with the lamp cover plate.
- Tighten the fixing screws for the temperature control.

# CLEANING AND MAINTENANCE

## Cleaning Your Unit

- Upon installation of your new appliance, it is recommended that it be cleaned thoroughly.
- Turn off the refrigerator first and then unplug the unit from the wall outlet.
- Remove all food content.
- Wash the inside with a damp warm cloth soaked in lukewarm water and baking soda solution. The solution should be about 2 tablespoons of baking soda to a quart of water.
- Be sure to keep the door gasket (seal) clean to keep the unit running efficiently.
- The outside of the refrigerator should be cleaned with mild detergent and warm water.
- Dry the interior and exterior with a soft cloth.

## Long-Term Storage

- Turn off the refrigerator first and then unplug the unit from the wall outlet.
- Remove all the food.
- Clean and dry the interior thoroughly.
- Leave the door open slightly to avoid possible formation of condensation, mold, or odor.  
**Have the door removed if necessary.**
- Use extreme caution in the case of children. The unit should not be accessible to child's play.

### **Note:**

If the appliance will not be used for less than three weeks, just leave the appliance operating.

## Moving Your Unit

- Turn off the refrigerator first and then unplug the unit from the wall outlet.
- Remove all the food.
- Securely tape down all loose items inside your refrigerator.
- Tape the doors shut.
- Be sure the refrigerator stays in the upright position during transportation.

## Energy Saving Tips

- The refrigerator should be located in the coolest area of the room, away from heat-producing appliances or heating ducts, and out of the direct sunlight.
- Let hot foods cool to room temperature before placing them in the refrigerator. Overloading the refrigerator forces the compressor to run longer. Foods that freeze too slowly may lose quality, or spoil.
- Be sure to wrap foods properly, and wipe containers dry before placing them in the refrigerator. This cuts down on frost build-up inside the refrigerator.
- Organize and label food to reduce door openings and extended searches. Remove as many items as needed at one time, and close the door as soon as possible.

# TROUBLESHOOTING

---

You can solve many common refrigerator problems easily, saving you the cost of a possible service call. Try the suggestions below to see if you can solve the problem before calling for service.

PROBLEM	POSSIBLE CAUSE
Refrigerator does not operate.	Not plugged in. The circuit breaker tripped or a blown fuse.
Compressor turns on and off frequently.	The room temperature is hotter than normal. A large amount of food has been added to the refrigerator. The door is opened too often. The door is not closed completely. The temperature control is not set correctly. The door gasket does not seal properly. The refrigerator does not have the correct clearances. The refrigerator has recently been disconnected for a period of time. 4 hours are required for the refrigerator to cool down completely.
Temperature inside the refrigerator is too warm.	Temperature control is set too warm. Turn the control to a cooler setting and allow several hours for the temperature to stabilize. Door is kept open too long or is opened too frequently. Warm air enters the refrigerator every time the door is opened. Open the door less often. The door is not closed completely. The door gasket does not seal properly. A large amount of warm or hot food might have been stored recently. Wait until the refrigerator has had a chance to reach its selected temperature. The refrigerator has recently been disconnected for a period of time. 4 hours are required for the refrigerator to cool down completely.
Temperature inside the refrigerator is too cold.	Temperature control is set too cold. Turn the control to a warmer setting and allow several hours for the temperature to stabilize.
Temperature of external refrigerator surface is warm.	The exterior refrigerator walls can be as much as 30°F warmer than room temperature. This is normal while the compressor works to transfer heat from inside the refrigerator cabinet.
Popping or cracking sound when compressor comes on.	Metal parts undergo expansion and contraction, as in hot water pipes. This is normal. Sound will level off or disappear as refrigerator continues to run.
Bubbling or gurgling sound, like water boiling.	Refrigerant (used to cool refrigerator) is circulating throughout the system. This is normal.
Vibrations.	Check to assure that the refrigerator is on a level surface. Floor is uneven or weak. Refrigerator rocks on the floor when it is moved slightly. Be sure floor can adequately support refrigerator. Level the

	<p>refrigerator by putting wood or metal shims under part of the refrigerator.</p> <p>The refrigerator is touching the wall. Re-level the refrigerator and move it from the wall.</p> <p>See <b>"Locating Your Unit"</b></p>
Moisture forms on the inside of the refrigerator walls.	<p>Weather is hot and humid, which increases internal rate of frost build-up. This is normal.</p> <p>Door is slightly open.</p> <p>Door is kept open too long, or is opened too frequently. Open the door less often.</p> <p>The door is not sealed properly.</p>
Moisture forms on the outside of the refrigerator.	<p>Door is slightly open, causing cold air from inside the refrigerator to meet warm moist air from outside.</p>
The door will not close properly.	<p>The refrigerator is not on a level surface.</p> <p>The gasket is dirty.</p>

Thank you for purchasing this product! If you have any question about the product, such as missing parts, damaged products, product assembling, and operation, please contact us via customer service number: **213-4467172 or 661-4358826**

### **IMPORTANT**

Please call our customer service department for any consulting:

**213-4467172**

**661-4358826**

(8:30am - 5:30pm P.S.T.)

DATED PROOF OF PURCHASE IS REQUIRED FOR WARRANTY SERVICE.

### **AVIS**

Veuillez appeler le service à la clientèle pour toutes questions au:

**213-4467172**

**661-4358826**

(8:30am - 5:30pm P.S.T.)

PREUVE D'ACHAT ORIGINALE REQUISE POUR SERVICE DE GARANTIE.

### **IMPORTANTE**

Sólo hay que llamar nuestro departamento de servicio al cliente en caso de tener preguntas o inquietudes:

**213-4467172**

**661-4358826**

(8:30am - 5:30pm P.S.T.)

SE REQUIERE PRUEBA DE COMPRA CON FECHA PARA SERVICIO BAJO GARANTÍA.

**ROWAN ELECTRIC APPLIANCE LLC**

**Phone: 213-4467172 or 661-4358826**