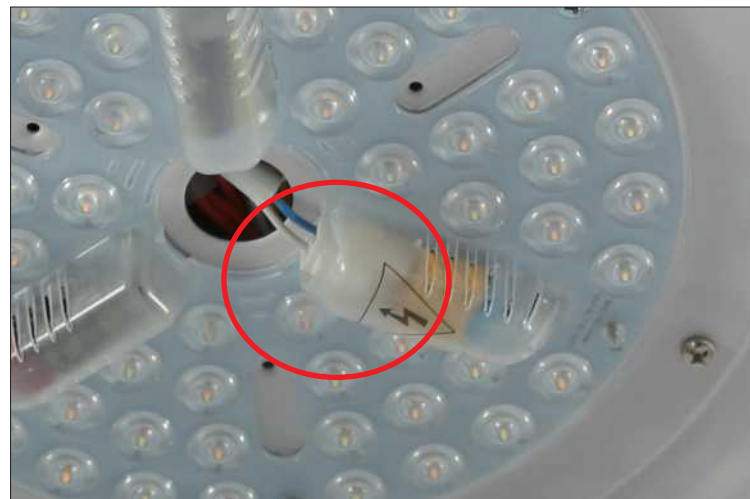


# warmiplanet

Light your Life



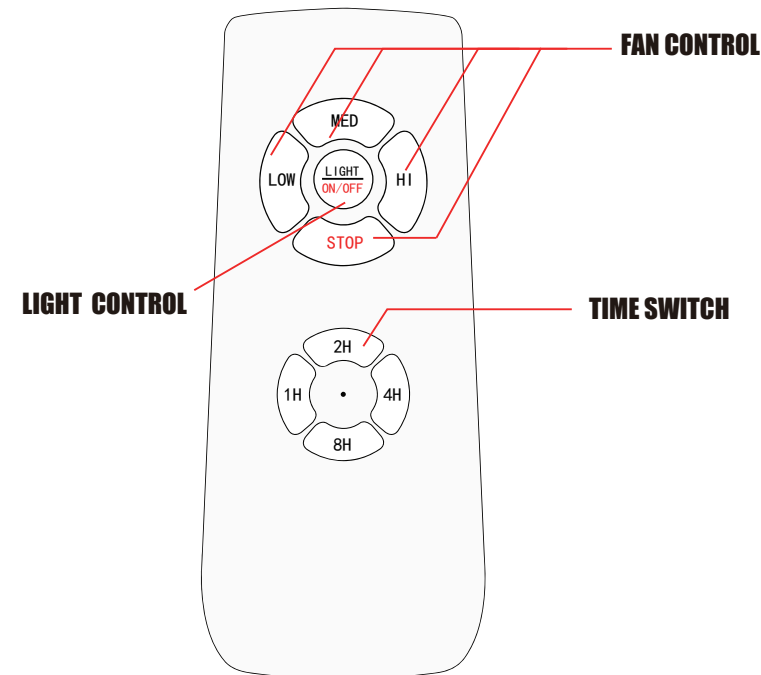
**Step 18**  
Fix the light kit with the screws.



**Step 19**  
Connect the light kit power cord to the light kit receiver.



**Step 20**  
Rotate the light cover until fixed.



## CEILING FAN INSTALLATION

### NOTE

1. PRESS THE ON/OFF BUTTON CONTINUOUSLY TO CHANGE THE COLOR TEMPERATURE . TURN BACK ON THE LIGHT MORE THAN 7 SECONDS AFTER TURN OFF THE LIGHT , THE COLOR TEMPERATURE WILL BE THE SAME AS LAST TIME.
2. IF THE REMOTE CONTROL CANNOT BE USED NORMALLY, PLEASE PRESS AND HOLD THE MIDDLE AND LOW BUTTONS AT THE SAME TIME WITHIN 5 SECONDS AFTER THE PRODUCT IS POWERED ON, UNTIL YOU HEAR TWO BEEPS TO SUCCEED.IF IT DOESNT WORK. PLEASE TRY AGAIN.



① Motor



② Hanging Bracket



③ Up Canopy



④ Blades



⑤ Down Rod



⑥ Down Rod 2



⑦ Blade Holder Brackets



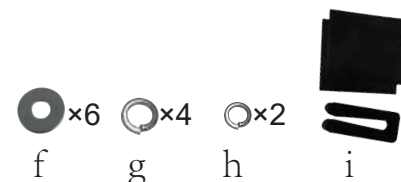
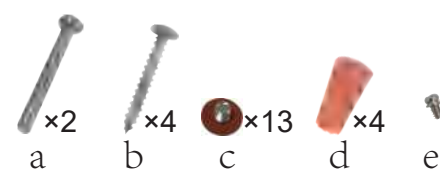
⑧ Blades Holders



⑨ Down Canopy



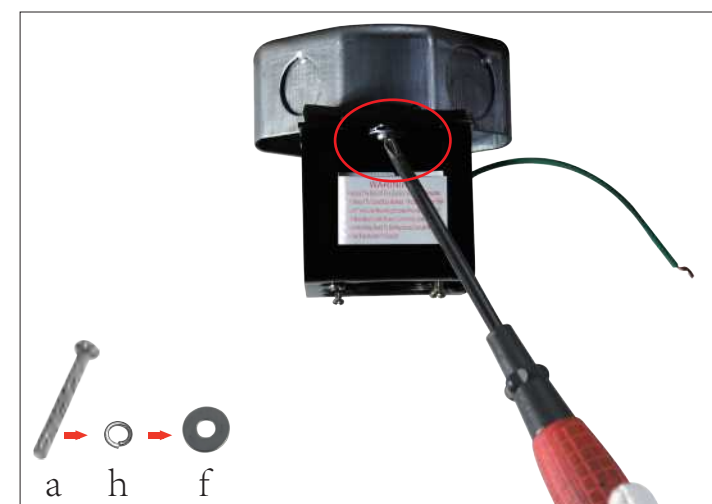
⑩ Light cover



⑪ Hardware fitting

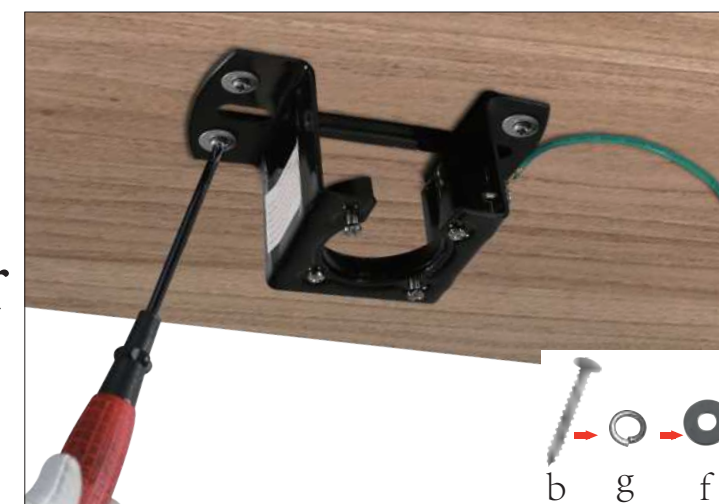


⑫ Remote Control



**Step 1** For concrete ceiling, install the mounting plate to octagon box with two machine screws.

or



**Step 1** For wooden ceiling, install the mounting plate to wooden ceiling with two wood screws.



**Step 2**  
Remove the 4 fixing screws for the light kit.



**Step 3**  
Remove the 8 fixing screws for the fan blades.



**Step 4**  
Loosen the 2 screws of the coupler.



**Step 5**  
Pull out the R-pin from the rod.

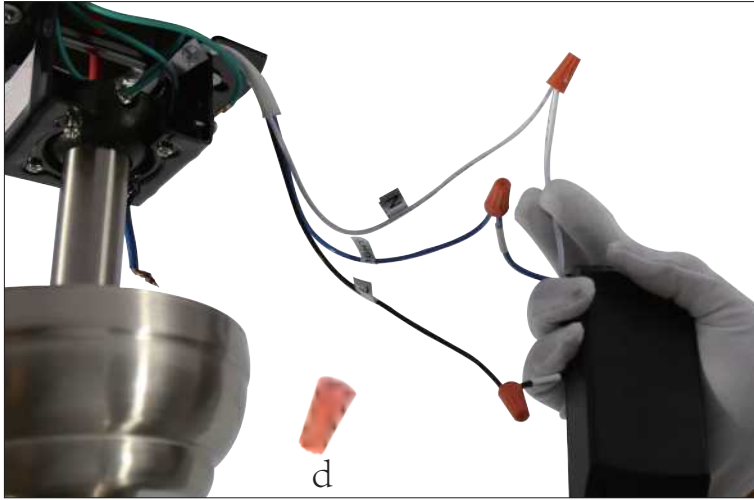




**Step 6**  
Put the wires and the two canopies through the downrod



**Step 7**  
Insert the cross pin and fix it with R-pin.



**Step 12**  
Connect the same color wires of the fan and receiver.



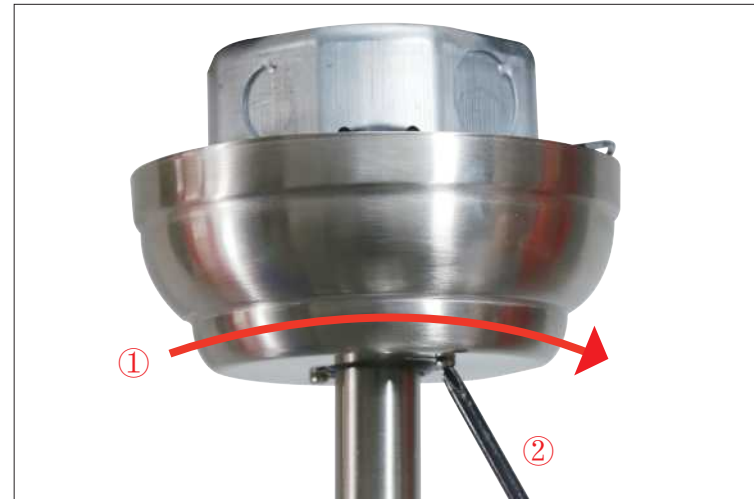
**Step 13**  
Connect the receiver to home wires. Black for Live wire, White for neutral wire, Green for ground wire.



**Step 8**  
Tighten the 2 screws of the coupler.



**Step 9**  
Cover the coupler with down canopy.



**Step 14**  
①Rotate the up canopy.  
②Tighten the two screws.



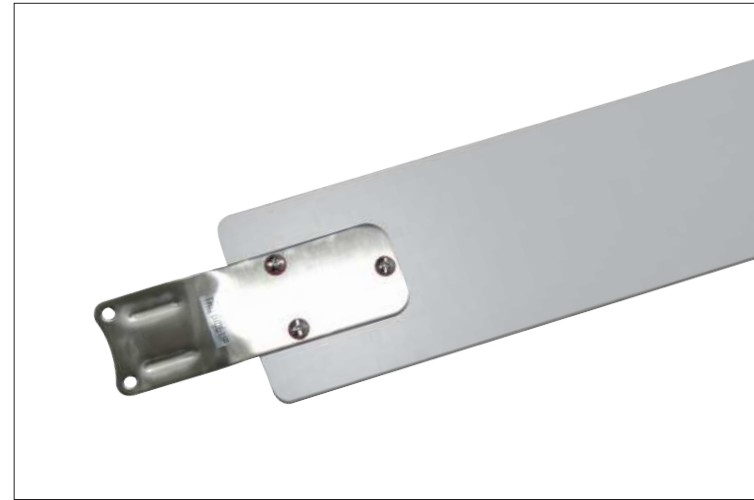
**Step 15**  
Align the hole between blade and holder.



**Step 10**  
Loosen the two opposite screws



**Step 11**  
Hang the fan on the hanging bracket and align the slot on the downrod with the bulge on the hanging bracket.



**Step 16**  
The other side, fix the blade holder bracket with screws and washers.



**Step 17**  
Install the blades, tighten the screws.