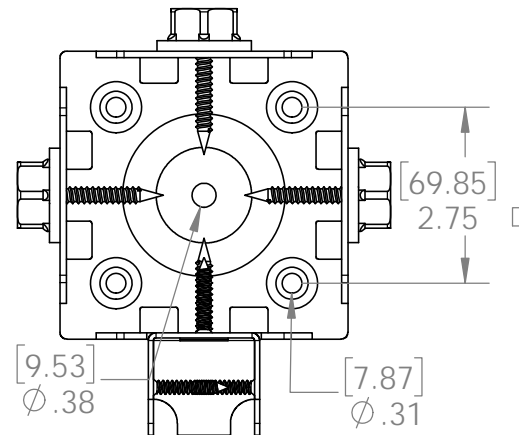
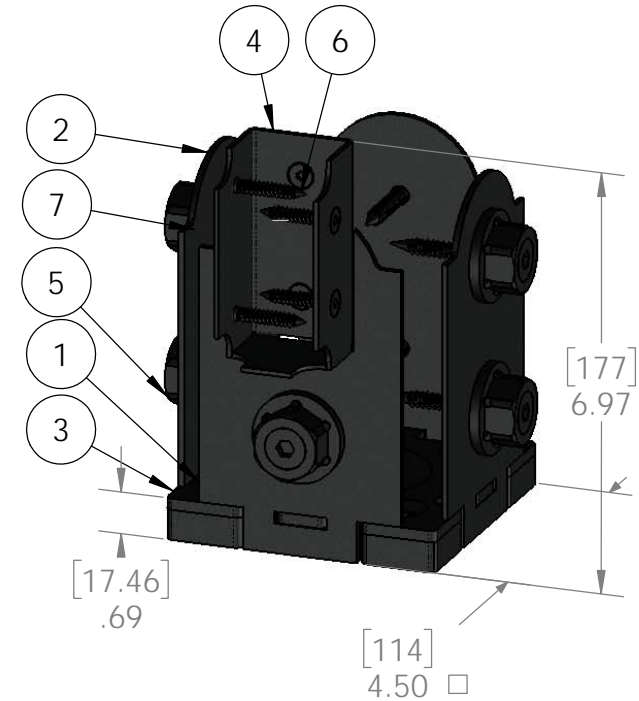
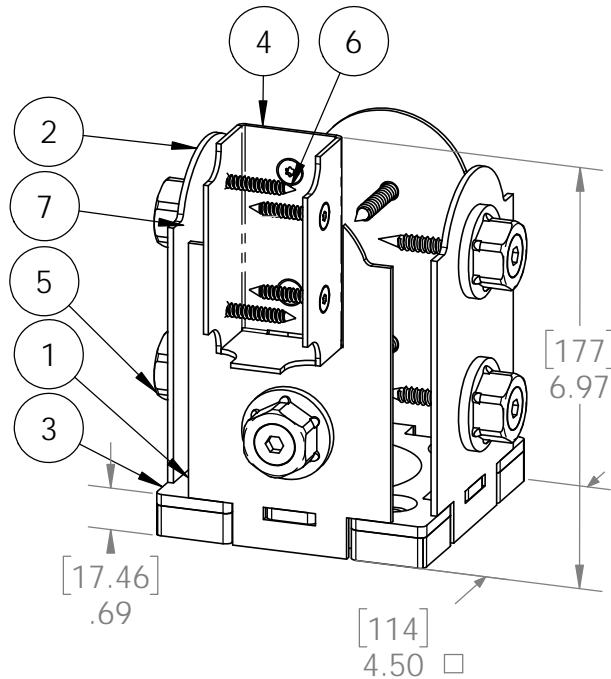


# Product & Packaging Specs

## 4x4 Post Base with Rail Saddle (4X4-TRS-LS)

Item #: 56631



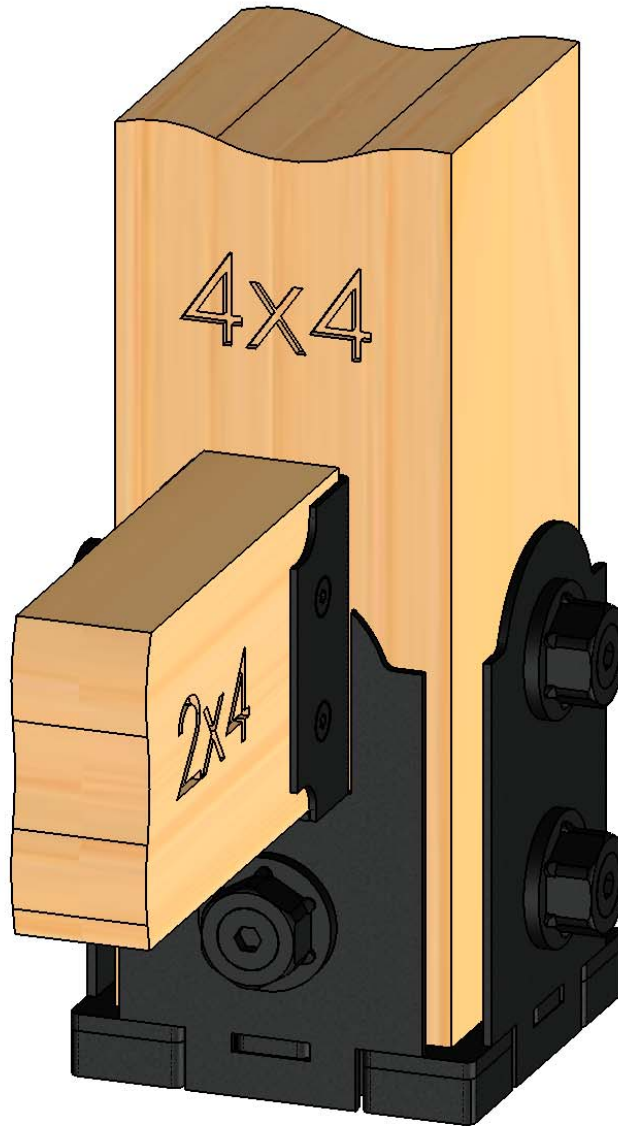
Weight: 3.77 LBS  
Scale: 1:3  
Last updated: 10/10/2016

56631-10

# Product & Packaging Specs

## Typical Installation

Item #: 56631



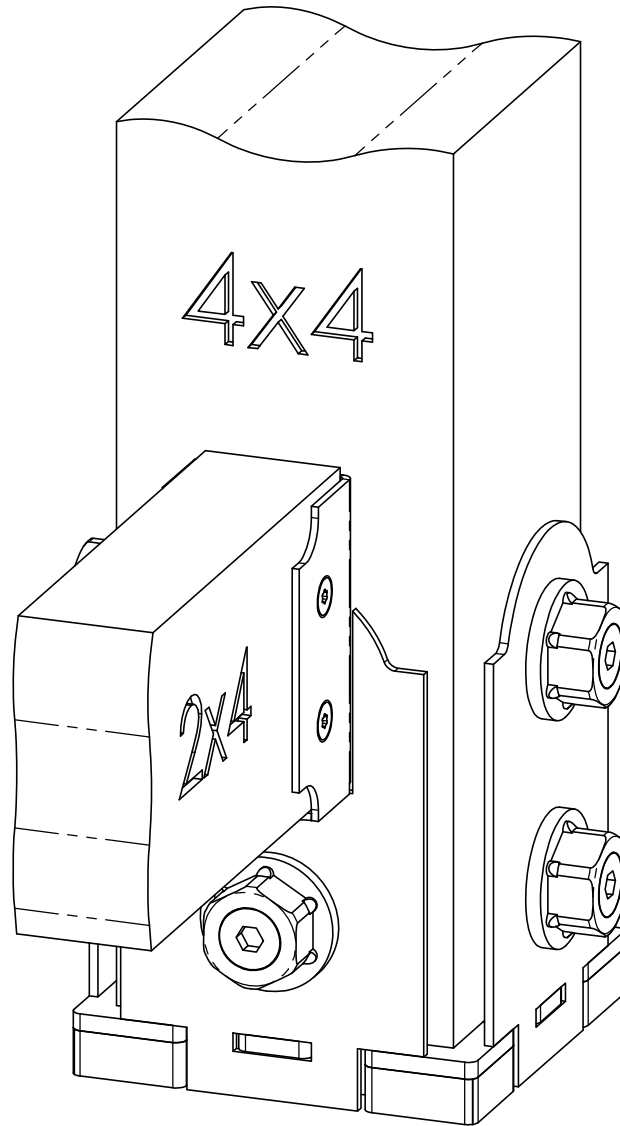
Weight: 9.78 LBS  
Scale: 1:2  
Last updated: 10/10/2016

56631-10

# Product & Packaging Specs

## Typical Installation

Item #: 56631



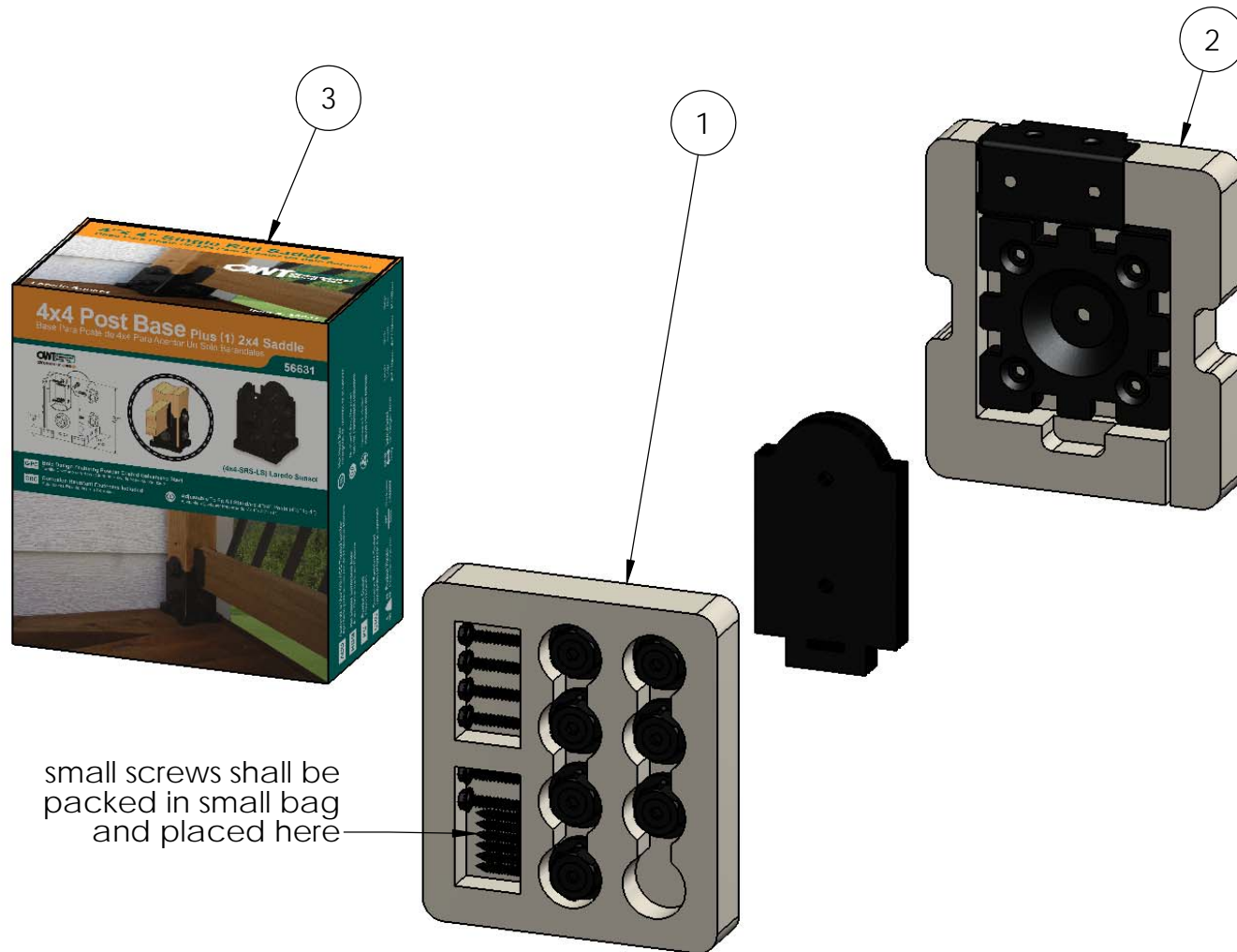
Weight: 9.78 LBS  
Scale: 1:2  
Last updated: 10/10/2016

56631-10

# Product & Packaging Specs

## 56631 Packing

Item #: Box packing



ITEM NO.	QTY.	PART NUMBER	DESCRIPTION
1	1	Insert, Rail Saddle	Insert, Rail Saddle
2	1	Insert, Rail Saddle	Insert, Rail Saddle
3	1	Box, 56631	Box, 56630

Weight: 4.52 LBS  
Scale: 1:4  
Last updated: 10/10/2016

56631-10

# Product & Packaging Specs

56631 Packing

Item #: Case packing



Weight: 19.20 LBS  
Scale: 1:3  
Last updated: 10/10/2016

56631-10



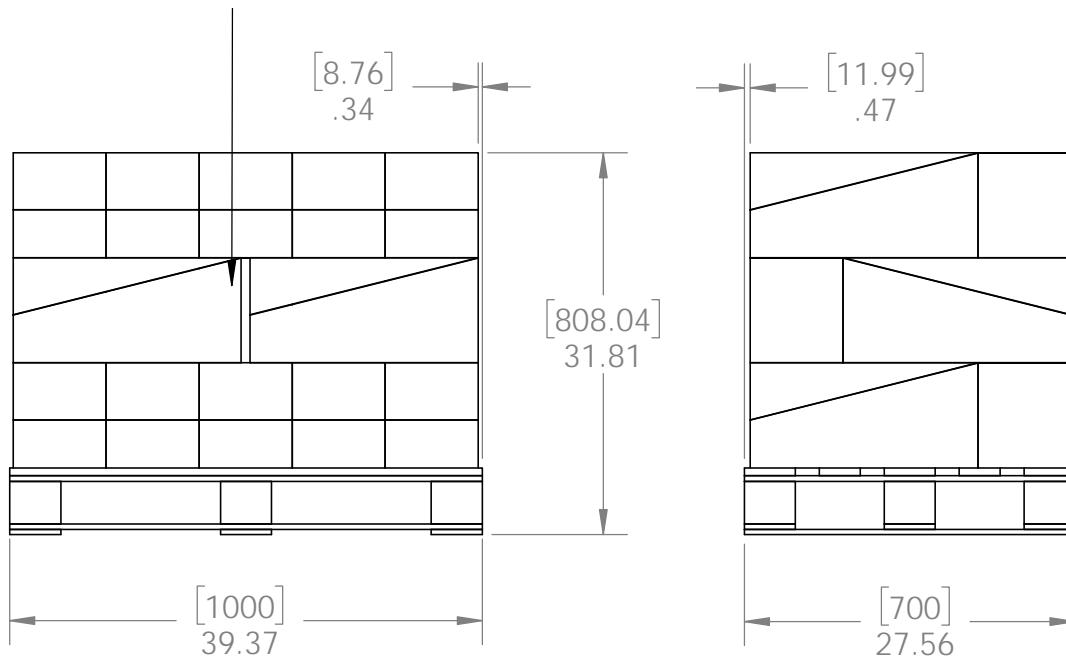


# Product & Packaging Specs

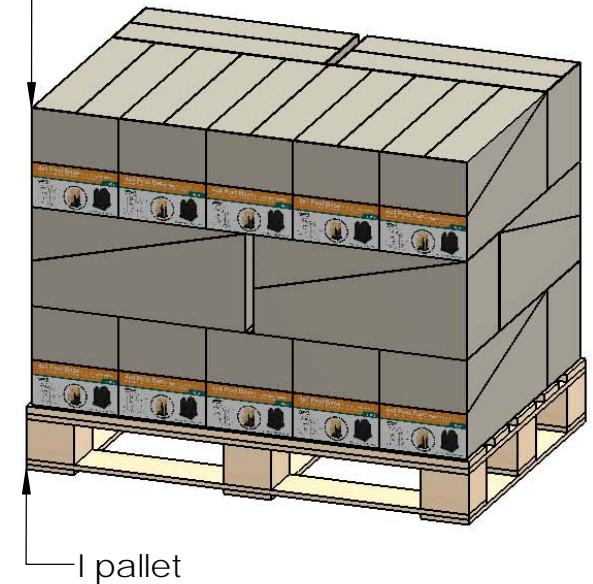
## 56631 Packing

Item #: Pallet packing

Item #: **56631** | **4x4-SRS-LS**  
 4x4 Post Base Plus (2) 2x4 Saddles  
**PALLET** | **84 pcs**  
 SKU#: **56831**   
 Weight: **429** lbs  
 LOT# \_\_\_\_\_ Priority# \_\_\_\_\_ 



Total number of cases: 21  
 Total number of pieces:  
 21x4=84 pieces on pallet



### additional pallet packing instructions

- plywood on top layer
- strap to pallet
- clear wrap around boxes

Weight: 429 LBS  
 Scale: 1:16  
 Last updated: 10/10/2016

56631-10