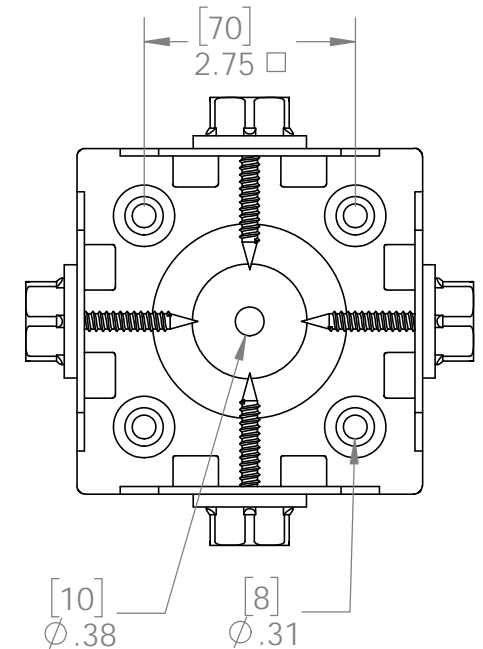
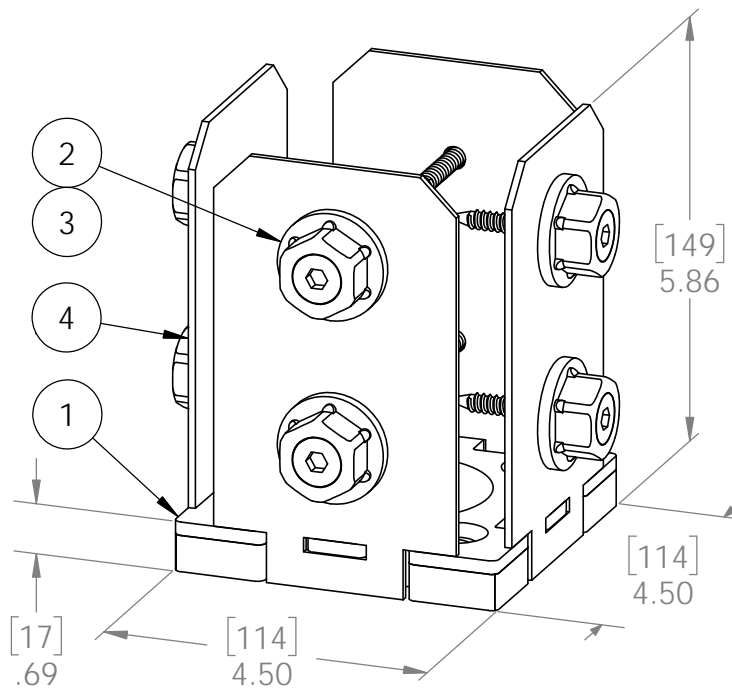
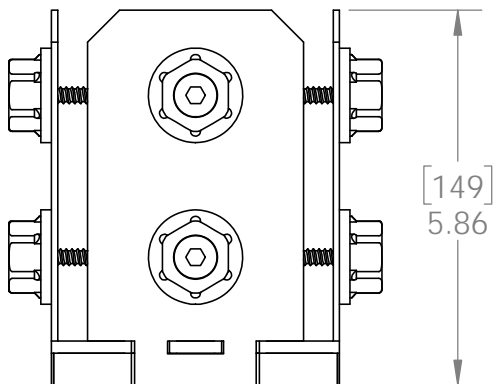
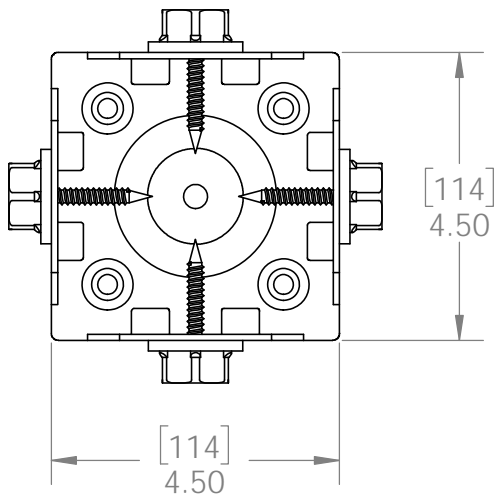


Product & Packaging Specs

4x4 Post Base (4x4-PB-IW)

Item #: 51707

ITEM NO.	QTY.	PART NUMBER	DESCRIPTION
1	1	56607-11	Assembly, 4x4 Stand Off
2	0.8	56621	1 1/2" Hex Cap Nut (HCN)
3	0.32	56625	OWT Timber Screw 1-3/4"
4	4	51707-15	Plate, 4x4 Side Compression



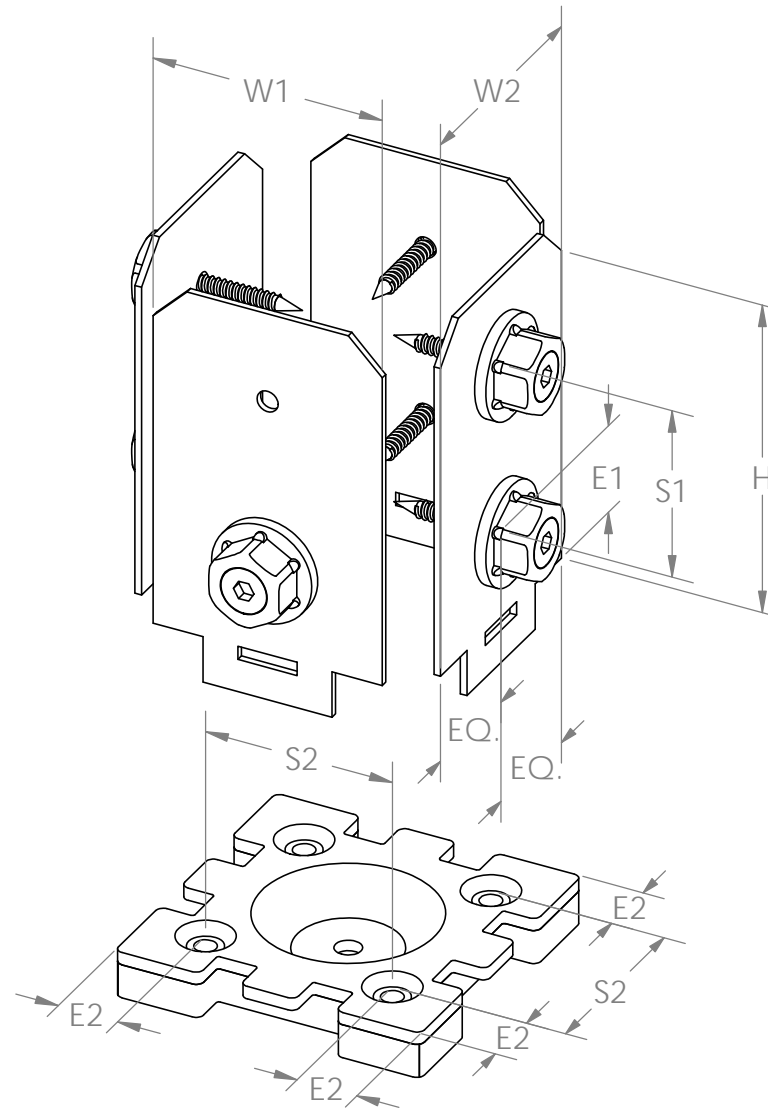
Weight: 3.69 LBS
Scale: 1:2
Last updated: 4/29/2016

51707

Product & Packaging Specs

4x4 Post Base (4x4-PB-IW)

Item #: 51707



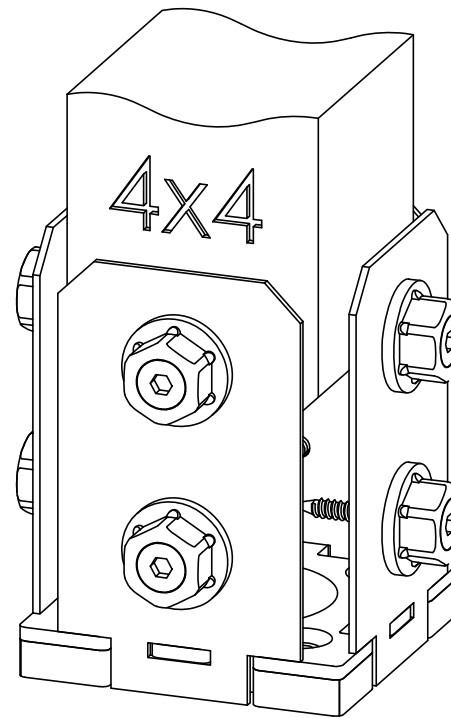
Weight: 3.69 LBS
Scale: 1:2
Last updated: 4/29/2016

51707

Product & Packaging Specs

4x4 Post Base (4x4-PB-IW)

Item #: Typical Installation & Basic Assembly



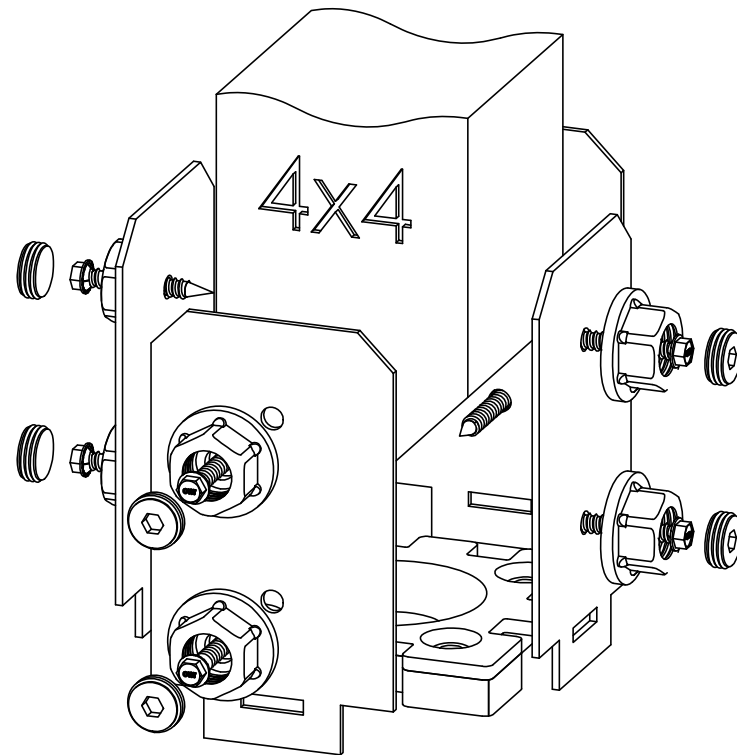
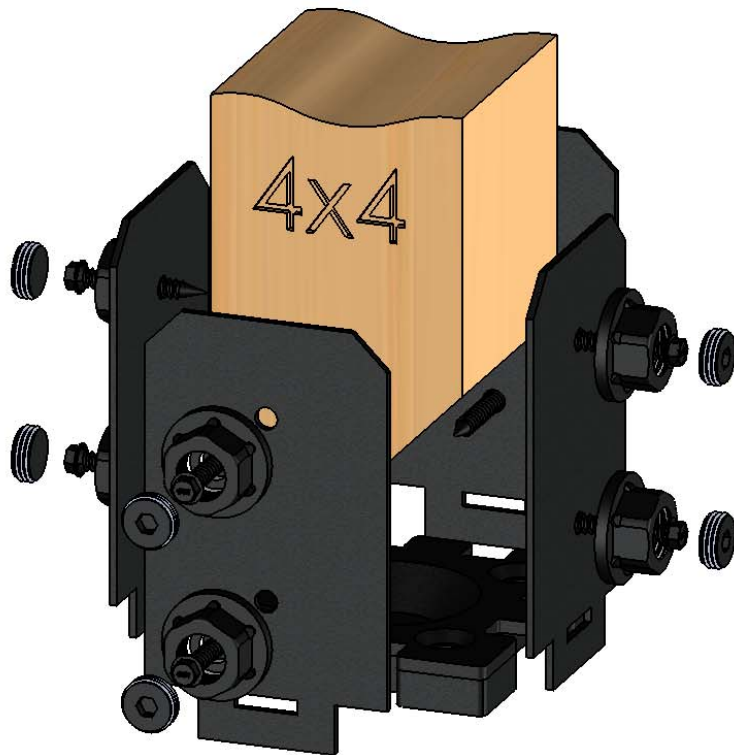
Weight: 3.69 LBS
Scale: 1:2
Last updated: 4/29/2016

51707

Product & Packaging Specs

4x4 Post Base (4x4-PB-IW)

Item #: Typical Installation & Basic Assembly



Weight: 3.69 LBS
Scale: 1:2
Last updated: 4/29/2016

51707