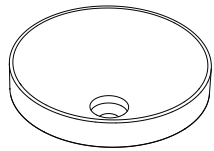
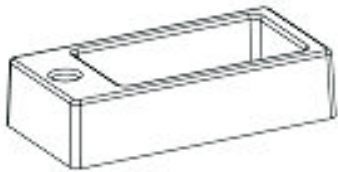


VESSEL SINK

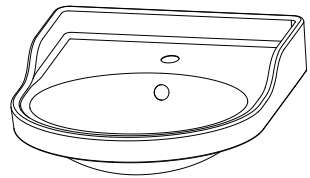
INSTALLATION INSTRUCTIONS



Above The Counter



Wall Mounted



HANG ON THE WALL

HELPFUL TOOLS:



Plastic Anchor Bolt



Screw



Plastic Washer



Metal Washer



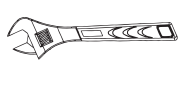
Metal Nut



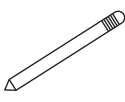
Impact Drill



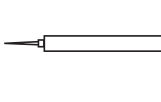
Hammer



Wrench



Pen



Silicone

Befor you start

- 1) Check to make sure you have all of the parts listed.
- 2) When you are ready to start, make sure you have the right tools to hand, plenty of space and a dry area for assembly.
- 3) Attention: This basin does not have an overflow hole, it is advisable to fit it with a non closable waste outlet.
- 4) Ensure the mounting surface is sound, clean, dry and level before this basin is installed.
- 5) CAUTION: This item is heavy. Heavy duty anchors / bolts and wall plugs should be used to fix the product to the wall. This item should **ONLY** be fixed to solid masonry. Check in your local store for the appropriate fixings.
- 6) If you are in any doubt about installing this product, consult a technically competent installer.

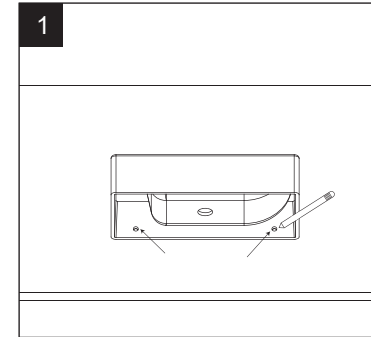
Safety

- ☒ For domestic use only.
- ☒ CAUTION: This item is heavy and it should **ONLY** be fixed to solid masonry. The wall plugs and fixings provided are suitable for this kind of wall.
- ☒ Care should be taken when drilling into wall to avoid any hidden pipes or wires.
- ☒ When drilling through ceramic tiles use a specialist drill bit.
- ☒ Where possible drill between tiles in the grout.
- ☒ CAUTION: DO NOT overtighten the fixings otherwise it may damage the product.
- ☒ CAUTION: Fragile - handle the product with care. This product may cause personal injury, property damage or break easily if not handled, positioned and installed with care.
- ☒ CAUTION: Always ensure the product is securely installed before use.
- ☒ Do not strike the basin with hard or pointed items.
- ☒ When the installation is complete, turn the water supply on and check for leaks around all connection points.
- ☒ Failure to follow these instructions may result in personal injury, damage to the product and property damage.

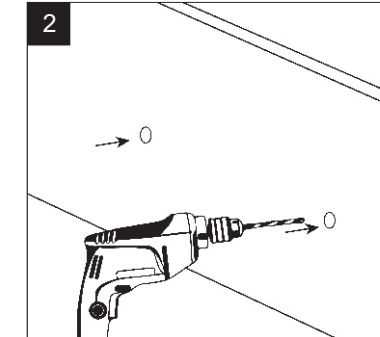
Care instruction

- ① Use warm soapy water and a soft damp cloth to clean the surface of the product. Wipe dry with a clean cloth.
- ② Never use any solvents, scourers, abrasives, bleach, acids, strong detergents, aggressive chemical cleaners or solvent-type cleaning solutions on the product.
- ③ Do not drop any hard objects on the basin. Damage may result with cracks or breakage.
- ④ Do not strike the basin with hard or pointed items.
- ⑤ It is recommended to check the Basin installation for security and tightness at regular intervals

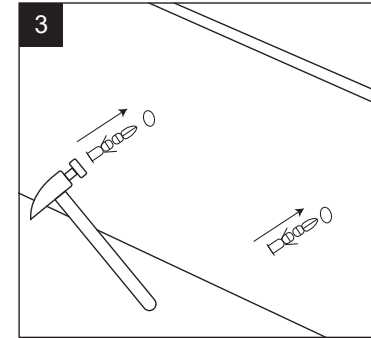
*Installation Type: Wall Mounted



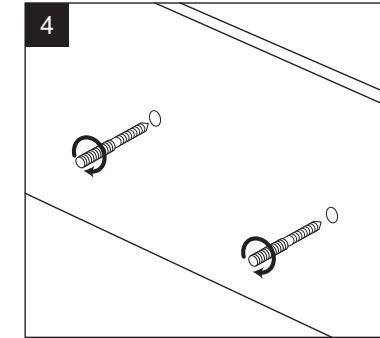
Place the sink in the location of the installation, pen mark the location of the installation



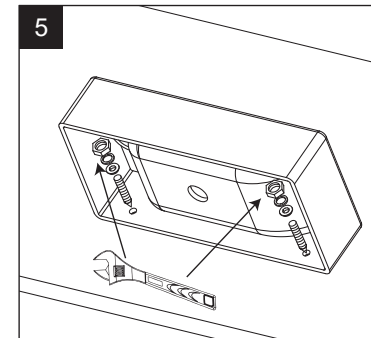
drill two holes about 75mm with 14 mm drill in the mark position.



Put plastic anchor into two holes

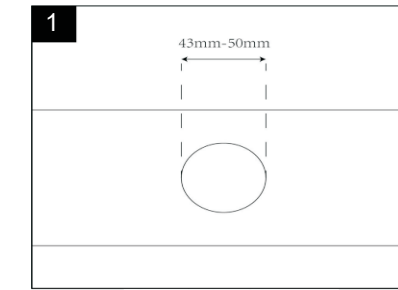


Screw the metal screws into each anchor with 8mm wrench until the sink is fixed

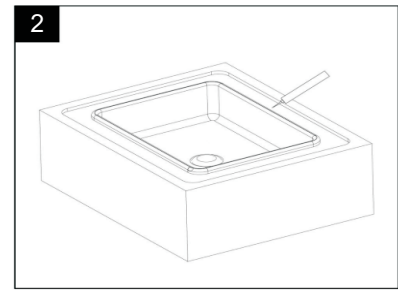


place the sink in the required position against the wall. Locate the fixing bolts through the holes in the rear of the sink. Push a plastic washer which followed by a metal washer into each fixing bolt. Lastly, Screw the metal nut onto each fixing bolt to fix the sink

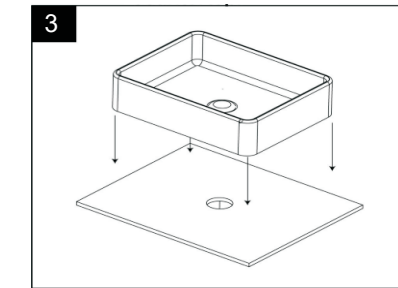
*Installation Type: Above The Counter



Cut a hole with a diameter of 43mm-50mm on the countertop.

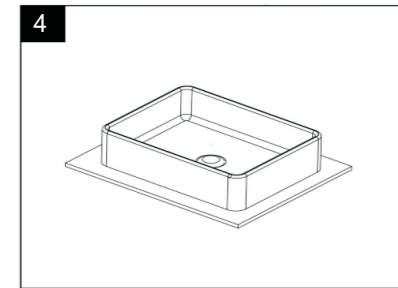
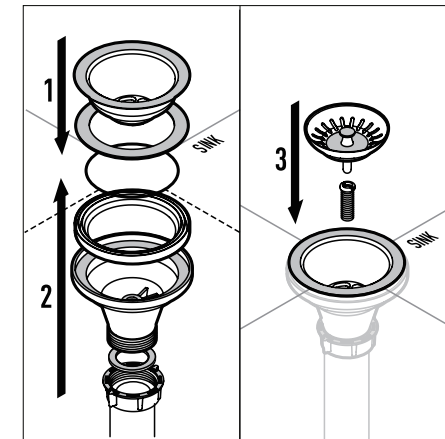


Turn the sink upside down with silicone.



* MOUNT FITTINGS

1. Insert top strainer bowl and gasket into sink drain.
2. Keep bottom seal inside ring of waste bowl and align under drain hole of the sink.
3. Using screw, connect both the top bowl to the bottom waste bowl.



Connect drain assembly (not included) hand tighten to check alignment. It may be necessary to cut off part of the tailpiece (area "A") or part of the horizontal leg of the trap (area "B"). Secure joint for water tight assembly

