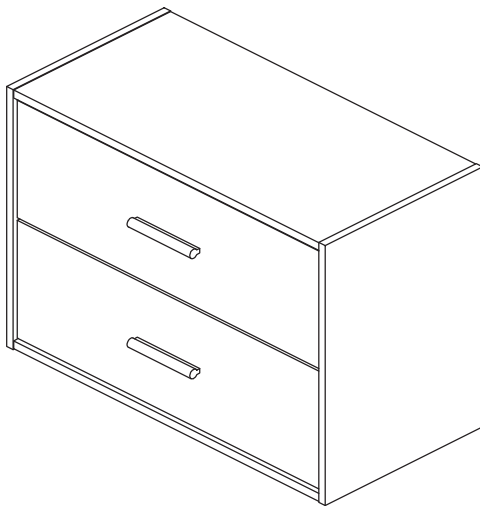


# ASSEMBLY INSTRUCTIONS

---



## TOOLS REQUIRED



### Philips Screwdriver

(Not Included)



### Power Tool

(Not Included)

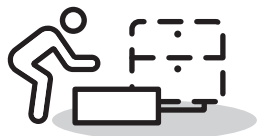


**2 - People  
Recommended**

## DRAWER CABINET

---

# PRE ASSEMBLY INTRODUCTION



Assemble near the area of the intended location.



Make sure you have enough space to move around.



Use cardboard or blankets to prevent scratches.



Ensure the furniture rests on a flat and level surface.

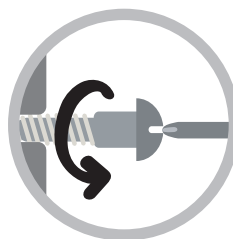
## ASSEMBLY AND CARE ADVICE



**FAILURE TO FOLLOW THE GUIDELINES BELOW  
MAY RESULT IN INJURY AND/OR PROPERTY DAMAGE.**



Position each part correctly and insert screws or bolts into their respective holes.

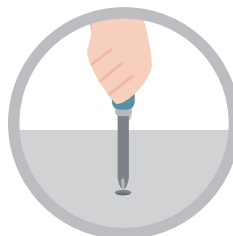


Turn clockwise to tighten and only tighten when step is completed or when instructed to do so.



Use the appropriate hand tools or power tools for assembly.

Select steps, such as tightening screws and/or bolts, may require hand tools to avoid causing damage during assembly.



After two weeks, check and tighten any loose hardware and repeat again every six months thereafter.

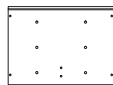
# ASSEMBLY INSTRUCTIONS

## PARTS

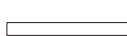
**A** 2PCS



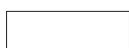
**B** 2PCS



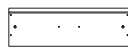
**C** 1PC



**D** 2PCS



**E** 2PCS



**F** 2PCS



**G** 2PCS



**H** 2PCS



**I** 2PCS



## HARDWARE

**1** 20PCS



**2** 4PCS



**3** 12PCS



**4** 2PCS



**5** 4PCS



**6** 4PCS



**7** 8PCS



**8** 1PC



**9** 12PCS



**10** 16PCS



**11** 1PC



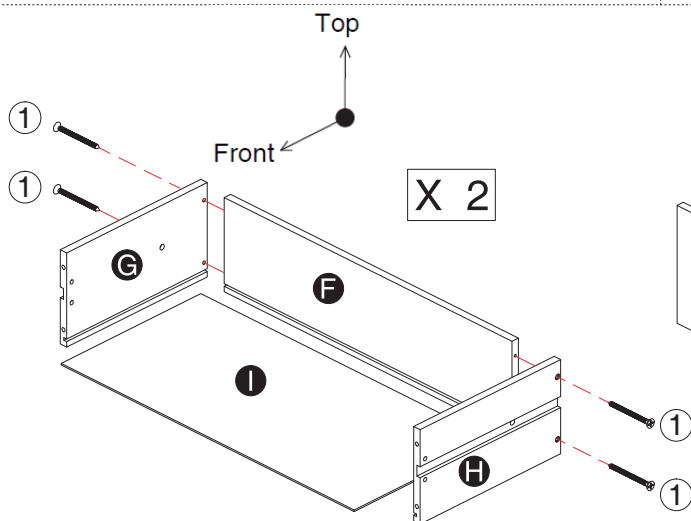
**12** 6SETS



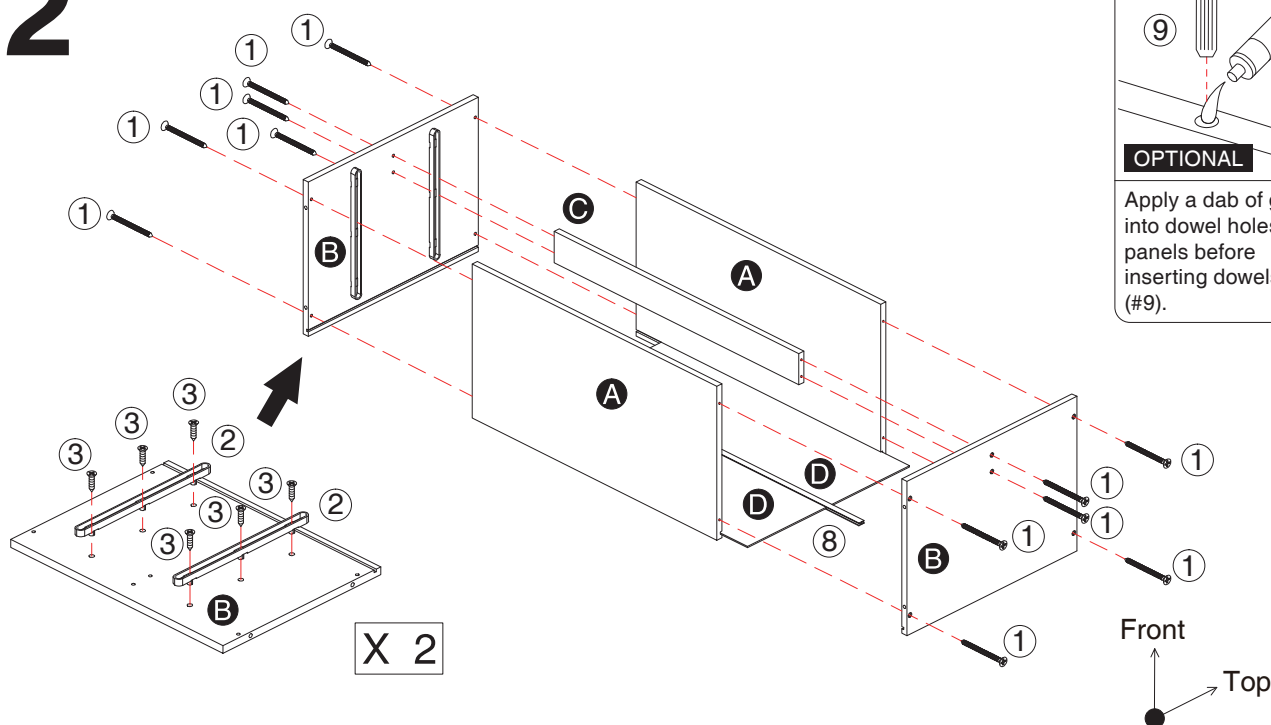
**13** 1SET



**1**



**2**

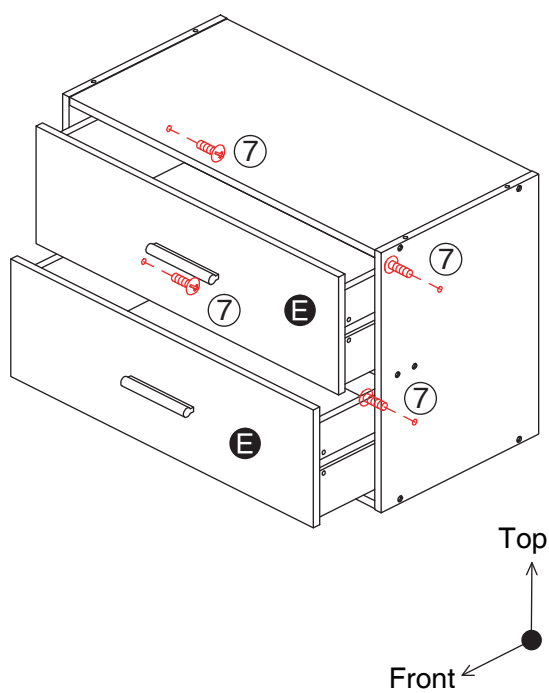


**OPTIONAL**

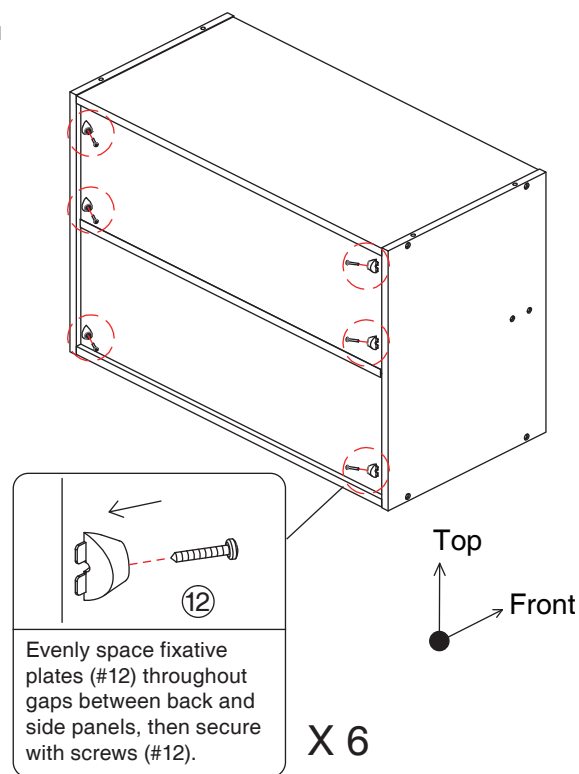
Apply a dab of glue into dowel holes of panels before inserting dowels (#9).

# ASSEMBLY INSTRUCTIONS

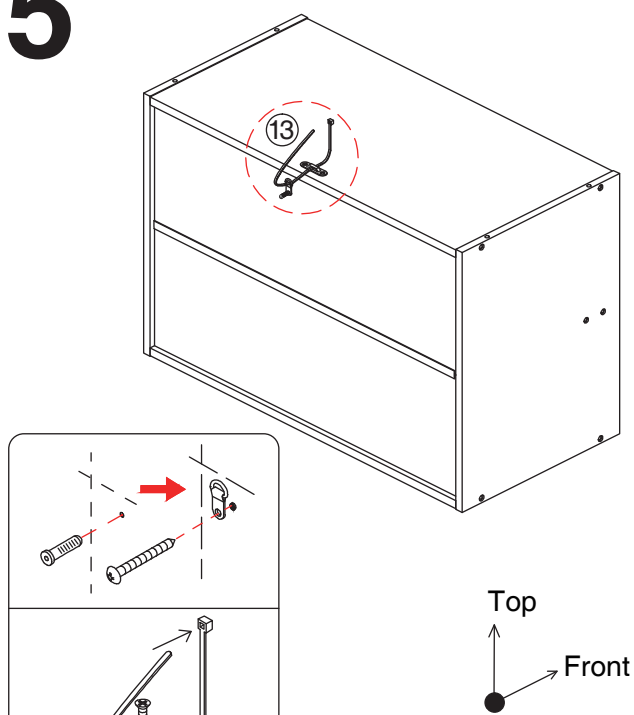
3



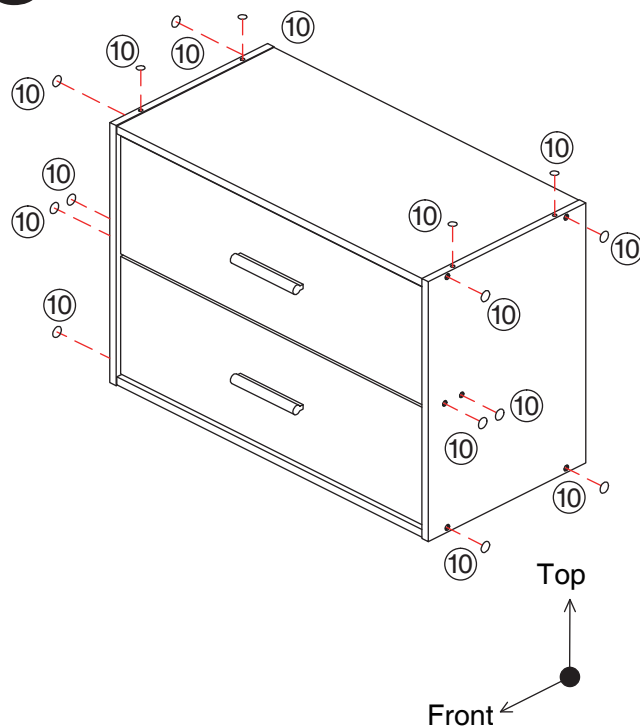
4



5



6



ASSEMBLY  
COMPLETED



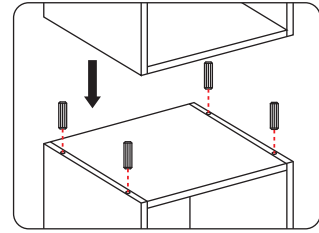


## Safety Measures for Stacking

A maximum of **2** units  
can be stacked.

The total stacked  
height cannot exceed **70.6"**

The use of wooden dowels and anti-tip hardware is required when stacking height exceeds **35.0"**

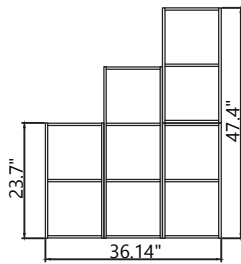


**Refrain from drilling  
holes on your own.**

Please make sure to use the pre-drilled  
holes and dowels (#9) for stacking.

## Stacking Options

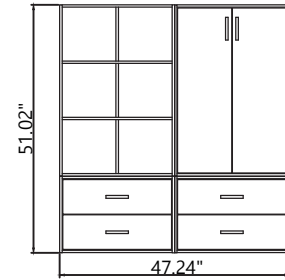
Common stacking combinations are displayed below.



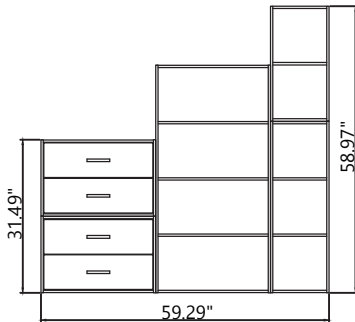
2S  
2S · 3S · 2S



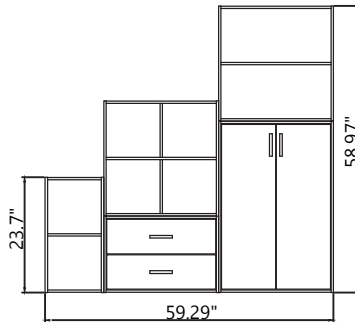
4S · 2L  
2D · 2D



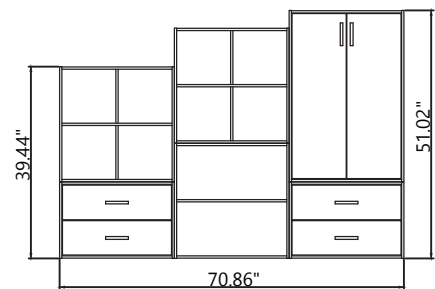
6S · DC  
2D · 2D



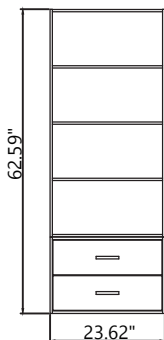
2D · 2S  
2D · 4L · 3S



4S · 2L  
2S · 2D · DC



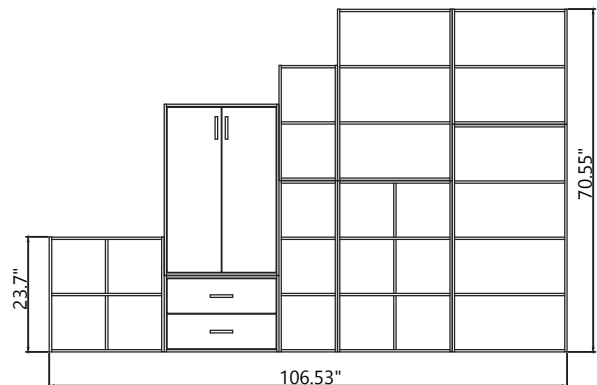
4S · 4S · DC  
2D · 2L · 2D



4L  
2D



2L · 3L · 4L  
2D · 2D · 2D



DC · 2S · 3L · 2L  
4S · 2D · 3S · 6S · 4L