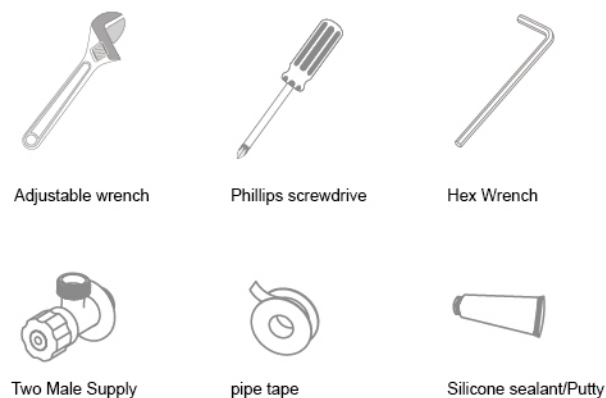


Applicable faucets (including but not limited)

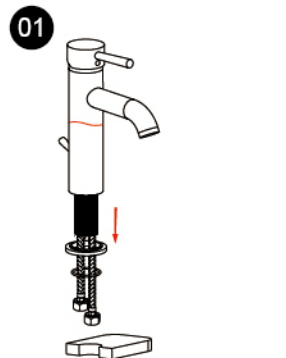


TOOLS YOU WILL NEED

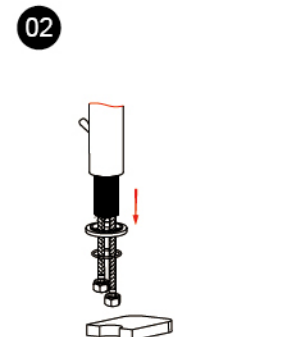


INSTALLATION

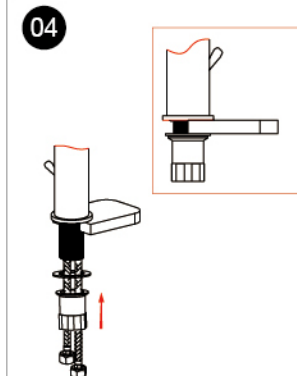
Prior to installation: Shut off water supply. Remove old faucet.
Clean sink/countertop surface in preparation for new faucet



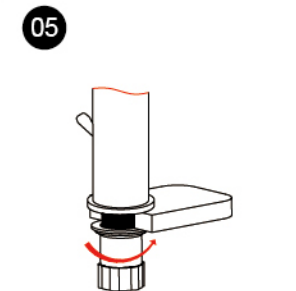
Slide the O-Ring to base. Insert the faucet through the sink.



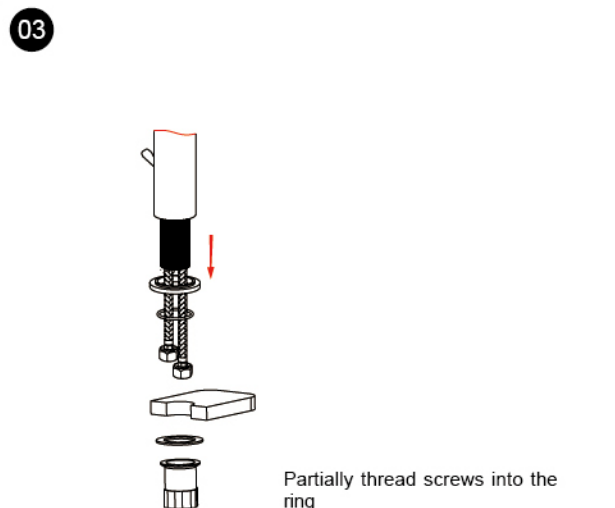
Ready to install underneath sink. Put the washer on mounting screw nut.



Screw the nut onto shank, leaving approximately 0.12" (3mm) between the ring and the sink.



Hold the faucet mounting screw underneath, meanwhile, rotate the faucet mainbody to your desired direction from upside. Then tighten the mounting nut securely



Partially thread screws into the ring

