



Color Pine Wood Barn Door - Frame

**Installation Manual**

96in



# SAFETY PRECAUTIONS

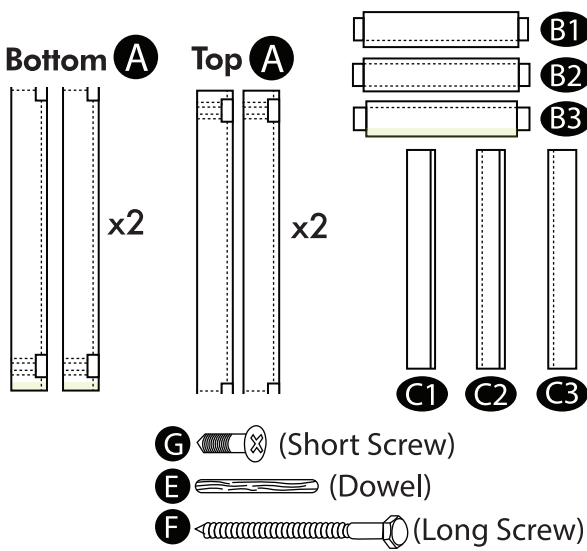
## !CAUTION!

- Power tools can cause serious damage if not professionally used. Safety gear must be worn before installation to prevent unexpected injuries.
- Pick an area free of hazardous condition before you start on the project. Please use tools and power tools responsibly any loss of control and accident deaths may occur due to abuse of tools.
- Big objects required in this project are needed to be carefully and responsibly moved. Be sure to wear safety gloves and shoes to prevent any serious injury.
- Be extremely careful to not put any parts of your body against a moving part of the hardware. This may cause bruising, punctures, and other results of injuries when for example when fingers are caught in the closing area of the doors.
- Precautions should be taken when opening or closing the door(s). Handles should be used when attempting to slide the door(s). Always keep you and children aware and safe from any unexpected situations.
- Any extreme uncontrolled pressure opening or closing the door(s) can damage the hardware gradually. Use handle(s) to open and close the door(s) with care at all times.

# HARDWARE INCLUDED

Please check that you have the correct quantity of hardware before installation.  
Different door sizes comes with different quantity of hardware.

### Main Components



Bottom A x2

Top A x2

B1, B2, B3


C1, C2, C3

G (Short Screw)

E (Dowel)

F (Long Screw)

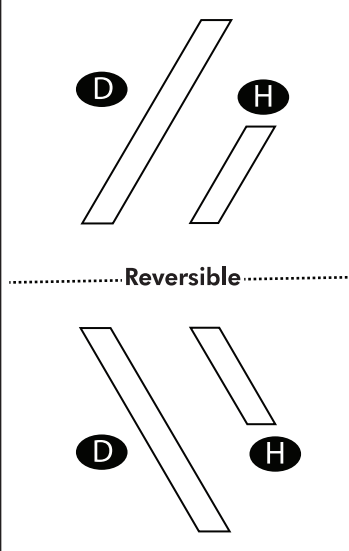
### Tools Needed



Rubber Mallet

Drill or Phillip Screw Driver

### Decorative Panels



D, H

Reversible

D, H

Checklist for items you should have for each door width.

Width	Top A	Bottom A	B1	B2	B3	C1	C2	C3	D	H	E	F	G
20in	2	2	1	1	1	2	2	2	4	8	12	12	64
22in	2	2	1	1	1	2	2	2	4	8	12	12	64
24in	2	2	1	1	1	2	4	2	4	8	12	12	64
26in	2	2	1	1	1	2	4	2	4	8	12	12	64
28in	2	2	1	1	1	2	6	2	4	8	12	12	64
30in	2	2	1	1	1	2	6	2	4	8	12	12	64
32in	2	2	1	1	1	2	6	2	4	8	12	12	64
34in	2	2	1	1	1	2	8	2	4	8	12	12	64
36in	2	2	1	1	1	2	8	2	4	8	12	12	64
38in	2	2	1	1	1	2	10	2	4	8	12	12	64
40in	2	2	1	1	1	2	10	2	4	8	12	12	64
42in	2	2	1	1	1	2	12	2	4	8	12	12	64
44in	2	2	1	1	1	2	12	2	4	8	12	12	64
46in	2	2	1	1	1	2	14	2	4	8	12	12	64
48in	2	2	1	1	1	2	14	2	4	8	12	12	64
54in	2	2	1	1	1	2	16	2	4	8	12	12	64
60in	2	2	1	1	1	2	20	2	4	8	12	12	64

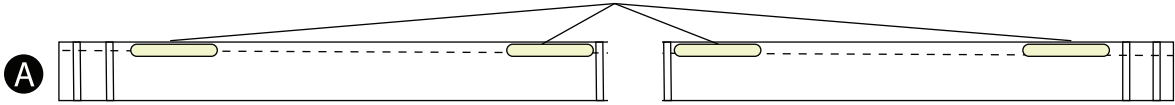
Decorative panels are included in the box, please see check list below for the panels you need to build your desired door design.

Door Design	D	H
Classic	0	0
Single X	2	4
Double X	4	8
Left Arrow	4	0
Right Arrow	4	0

# INSTRUCTIONS

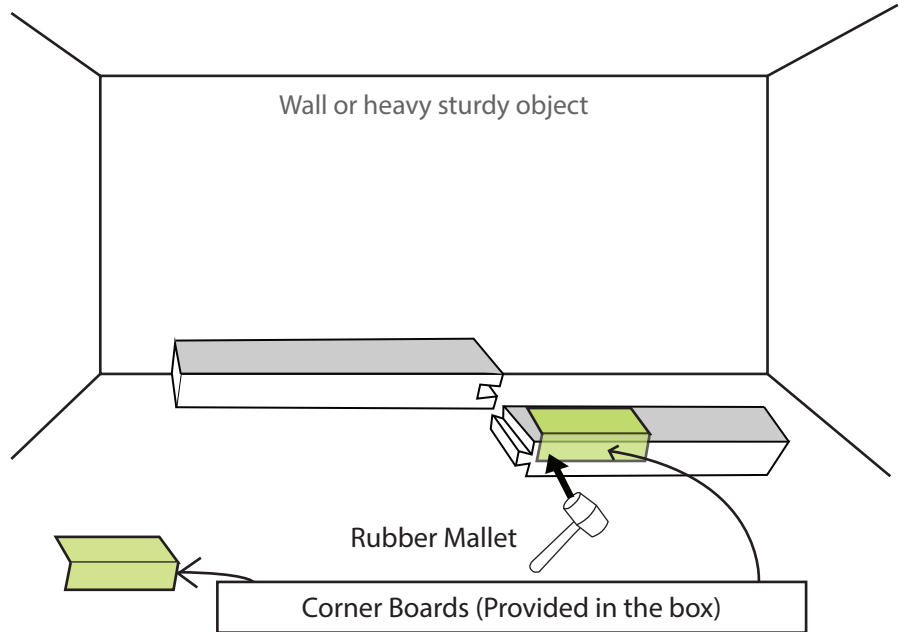
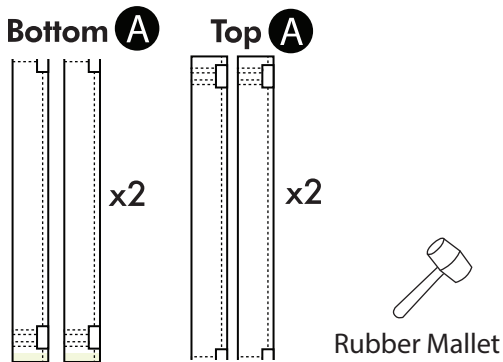
Before assembly confirm two of your A Panels has white foam dowels installed in the grooves like the diagram below. There should be 4 foam dowels in each panel. If you happen to know they are missing please contact us and let us know. These foam dowels are important for the assembly because it helps to minimize the appearance of gaps in between the C panels.

## WHITE FOAM DOWELS



## STEP 1

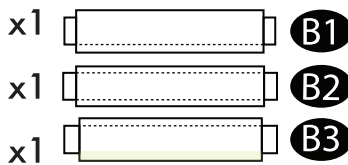
### Components Needed



When you are starting with Step 1. Please find a sturdy backing to support the installation of the Top and Bottom A panel. Placing the panels flat on the ground with the non-groove side facing you. With both panels lined up correctly without having it slanted using the corner boards provided in the box to protect the wood from dents, you can start slowly hammering the top panel into the bottom panel until they fit snug and parallel with each other.

## STEP 2

### Components Needed

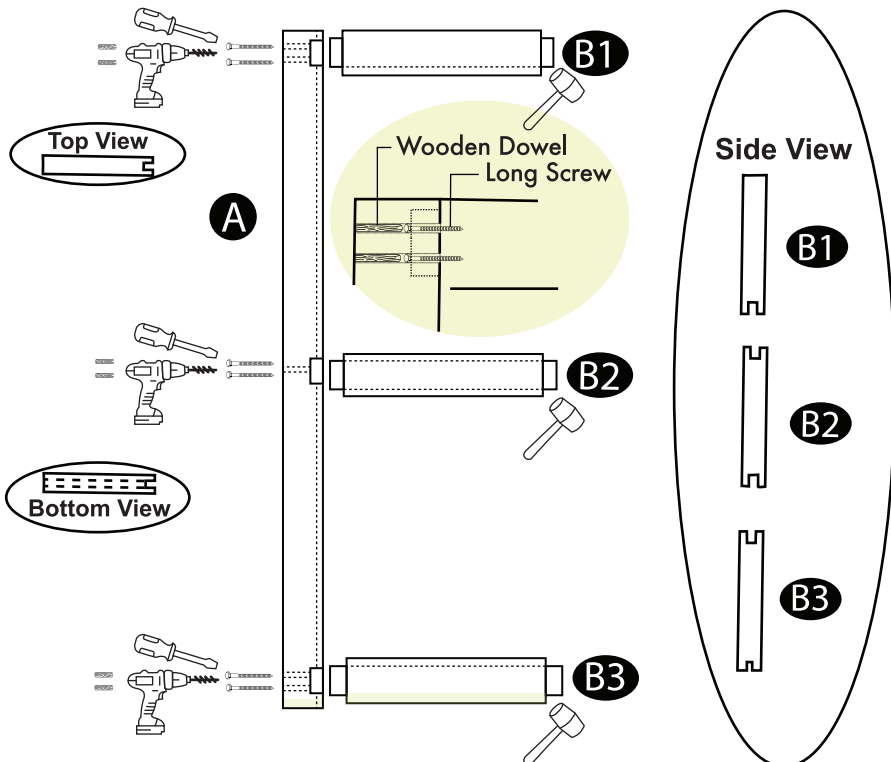


Wooden Dowel  
E x6

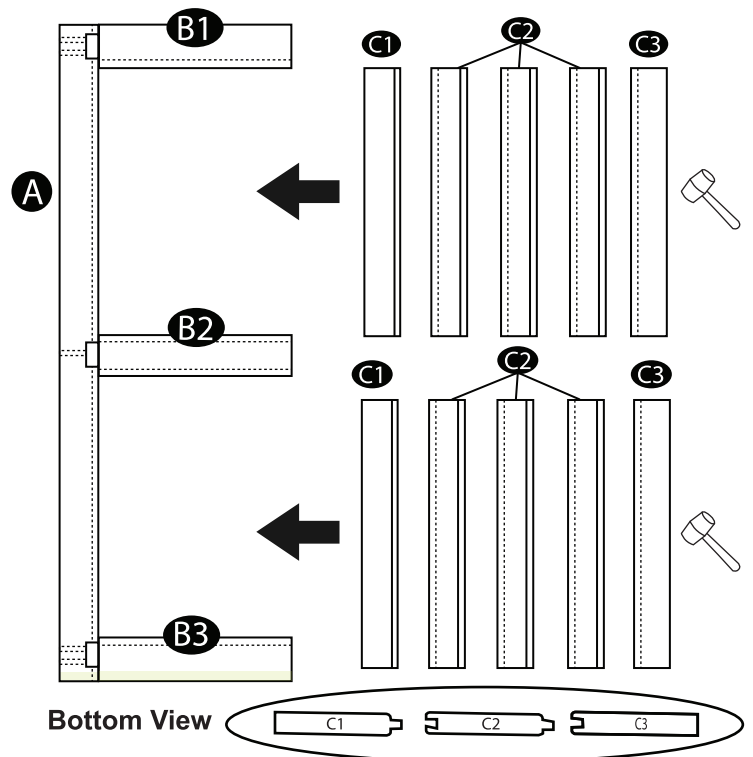
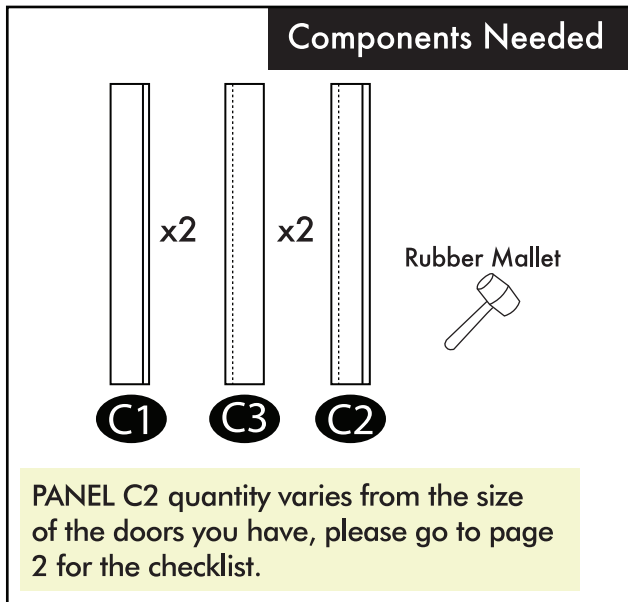
Long Screw  
F x6

Drill or Phillip  
Screw Driver

Rubber Mallet



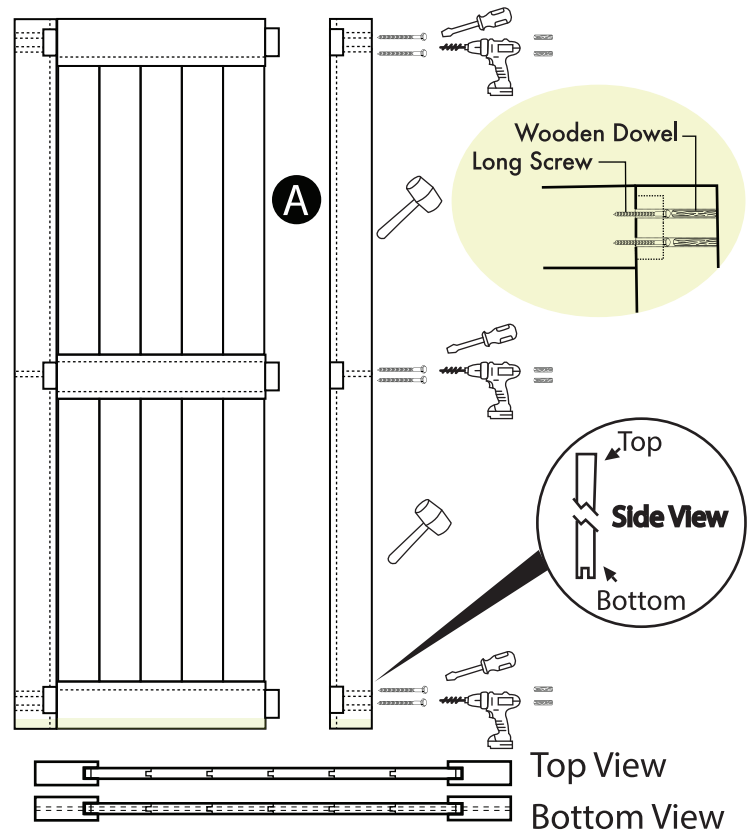
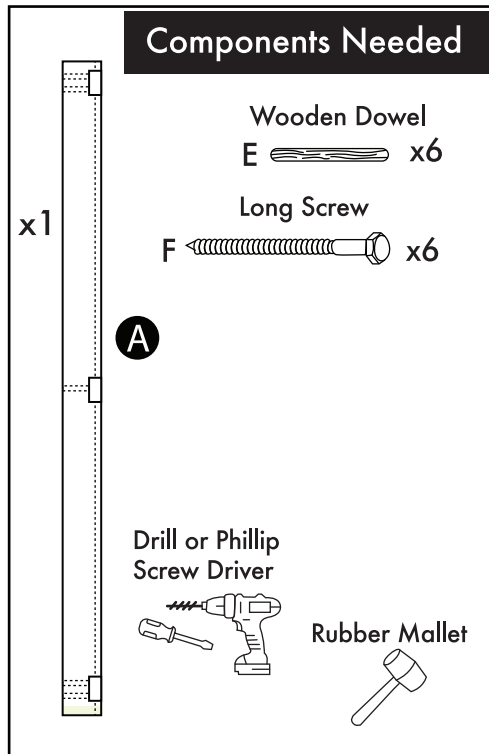
## STEP 3



### NOTICE

If the gap between **A** and **B** panels occurs, remove the foam dowels from one of the **A** panels as the expanding foam prevents a tight closure.

## STEP 4



### ON YOUR OWN PREFERENCE

Cut down the dowels that is sticking out of the door after installing. Then sand off to smoothen the sides and the whole door to prepare for the finishes needed for your door.

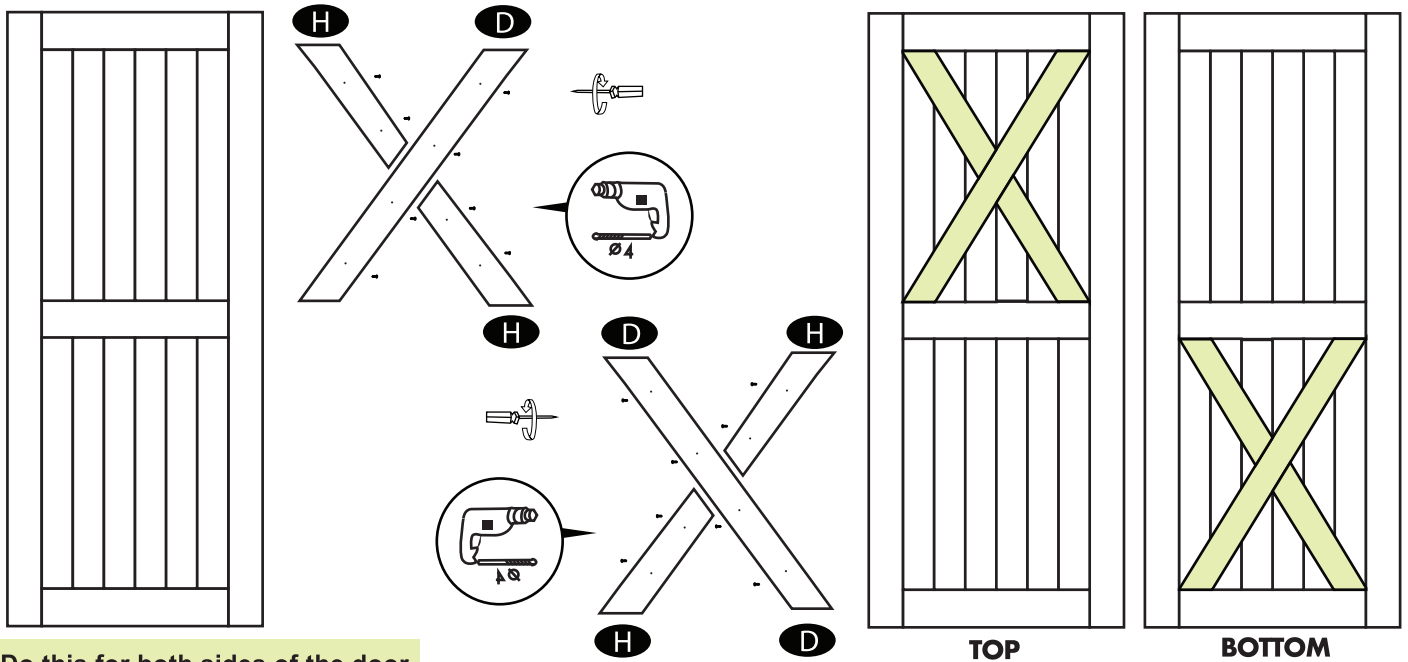
If you order the H design, your installation is complete!

But if you order other designs besides H, please continue to page 5.

Before installing the decorative panels make sure to differentiate the top and the bottom of the door(s). That way you can place the panels, and position it in the desired design.

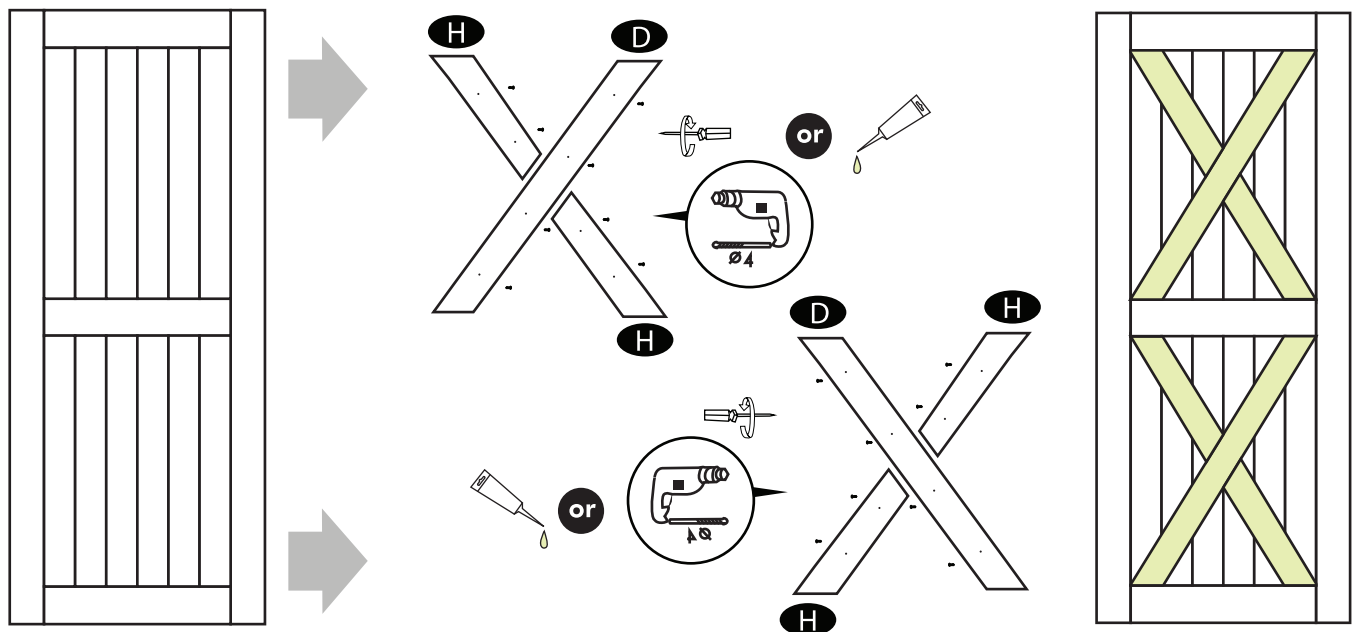
### Single X Door Design

You may follow the diagram below by using the screws included or use your wood glue to get a flawless finish.



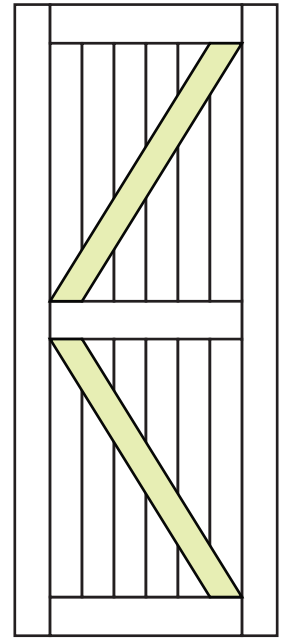
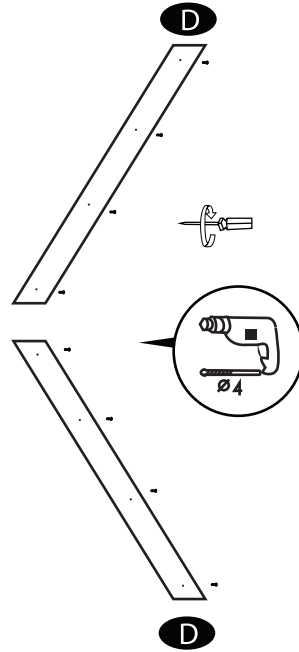
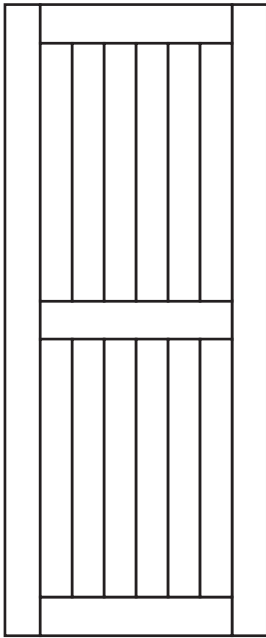
### Double X Door Design

You may follow the diagram below by using the screws included or use your wood glue to get a flawless finish.



## Left Arrow Door Design

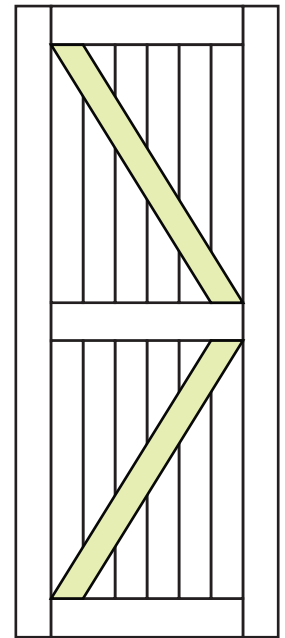
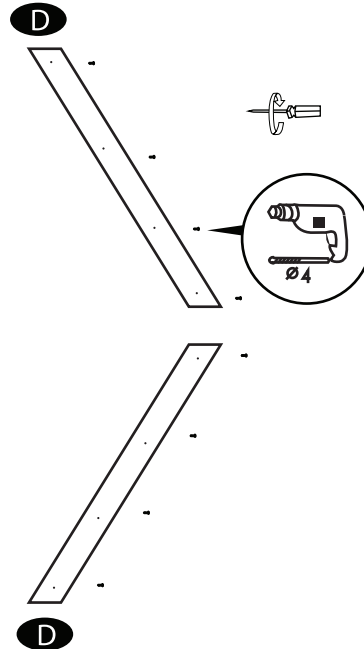
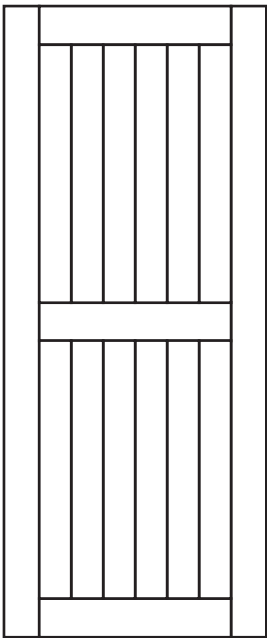
You may follow the diagram below by using the screws included or use your wood glue to get a flawless finish.



Do this for both sides of the door.

## Right Arrow Door Design

You may follow the diagram below by using the screws included or use your wood glue to get a flawless finish.



Do this for both sides of the door.

**YOUR INSTALLATION IS COMPLETE!**



## SLIDING HARDWARE / BARN DOORS

High Quality • Exquisite Design • Outstanding Services

### ABOUT US

At Homacer, our goal is to provide the finest sliding barn door hardware products and services for our valued customers. We keep polishing our products to make their quality better, prices lower and installation easier. We make it possible for you to get everything you need from us when you think about installing sliding barn doors.

### CONTACT US

#### ***Bulk Membership Program***

To learn more about bulk / dropship order program you may contact us at

**Office #: 1(770)-559-5849**

**Website: [www.homacer.com/pages/membership-program](http://www.homacer.com/pages/membership-program)**

**Email us: [sales@homacer.com](mailto:sales@homacer.com)**

#### ***CUSTOMER SERVICE TECH SUPPORT***

**Office #: 1(770) 864-5437**

**Website: [www.homacer.com](http://www.homacer.com)**

**Email us: [info@homacer.com](mailto:info@homacer.com)**

### LOCATION

1885 Beaver Ridge Cir, Ste A  
Norcross, GA 30071

For additional hardware and accessories such as floor guide, soft close, and door handles, they can all be found on our website at [www.homacer.com](http://www.homacer.com) if you have any other inquiries you can always contact us through the phone or emails.