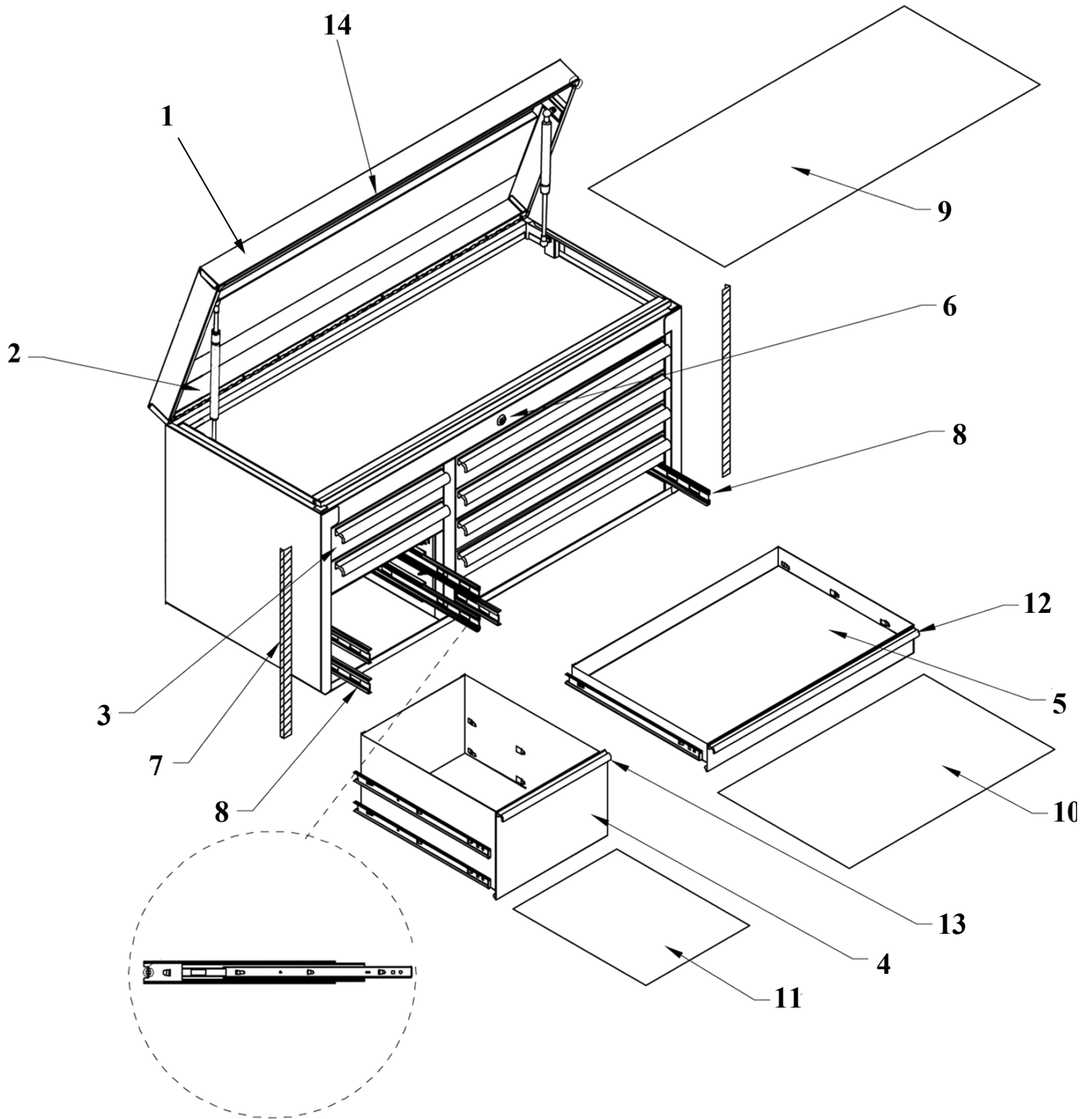


**41 in. W x 25 in. D x Powder
Coated Steel
8-Drawer Top Chest**

**Model:
RX412508CH
RX4108CH**

Extreme Tools, Inc.
740 Frontenac Rd.
Naperville, Illinois 60563
630.369.9303
www. ExtremeTools.com

TOP CHEST PARTS LIST RX412508CH



Replacement keys may be ordered using the code that appears on the face of the lock.

To order replacement parts, have the part number, tool box color and quantity ready. If under warranty, the serial number is **REQUIRED** to get replacement parts.

Not all parts are available under warranty and may be purchased separately.

RX Series 41 in. TOP CHEST PARTS LIST
RX412508CH, RX4108CH

Item #	Part number	Descriptions	Qty.
1	ZLD412508-BK	Lid for RX412508CH, Black assy. (Include handle, hinge installed & pop rivets for installing to chest	
1	ZLD412508-BL	Lid for RX412508CH, Blue assy. (Include handle, hinge installed & pop rivets for installing to chest	
2	ZST350110M6	Strut for lid support on the RX412508CH, DX412504CH (11KG).	2
3	ZDRR324E1QWKC	RX4125RC/CH Drawer 324 mm Wide, 100 Lb. Slides, Single Deep, Black with Chrome Drawer Pulls.	2
3	ZDRR324E1QWUC	RX4125RC/CH Drawer 324 mm Wide, 100 Lb. Slides, Single Deep, Blue with Chrome Drawer Pulls.	2
4	ZDRR324E3QWKC	RX4125RC/CH Drawer 324 mm Wide, 100 Lb. Slides, Triple Deep, Black with Chrome Drawer Pulls.	1
4	ZDRR324E3QWUC	RX4125RC/CH Drawer 324 mm Wide, 100 Lb. Slides, Triple Deep, Blue with Chrome Drawer Pulls.	1
5	ZDRR594E1QWKC	RX4125RC/CH Drawer 594 mm Wide, 100 Lb. Slides, Single Deep, Black with Chrome Drawer Pulls.	5
5	ZDRR594E1QWUC	RX4125RC/CH Drawer 594 mm Wide, 100 Lb. Slides, Single Deep, Blue with Chrome Drawer Pulls.	5
6	Z-LK EX01-04	EX01-EX04 Mix lock sets	1
7	ZTRRX564-CR	RX41 Chest Vertical Side Trim, 564 mm CHROME finish.	2
8	ZSLW530F520	100 lb. Drawer Slide set	9 sets
9	ZDL924X559 PVC	Drawer liner, large, 924x559, PVC, Black	1
10	ZDL567X559 PVC	Drawer liner, med, 567x559, PVC, Black	5
11	ZDL297X559 PVC	Drawer liner, small, 297x559, PVC, Black	3
12	ZDPRQ597C	RX drawer pull assy, 594 mm, CR, DDT for RX41	5
13	ZDPRQ324C	RX drawer pull assy, 324 mm, CR, DDT for RX41	3
14	ZDPRX960-CR	RX41 Chest lid pull, 960 mm, CR for RX41 chest lid	1
NS*	ZECRX	RX Plastic End Caps for Vertical Trim. Black.	2
NS*	ZM6BTHX-16	M6X16 Hex Bolts for securing chest to cabinet	4
NS*	Z-DTEX56	Detents for slides (come with slides)	18
NS*	Z-LGS	Extreme Tools name plate	1
NS*	ZM4MSPH-6	M4 X 6 MM Pan Head Mach. Screw for lid pull	7
Reorder	Z-DL412508CH-Kit	Liner kit, 1 large, 5 midium & 3 small (For re-order purpose)	1 set
		*Not Shown	

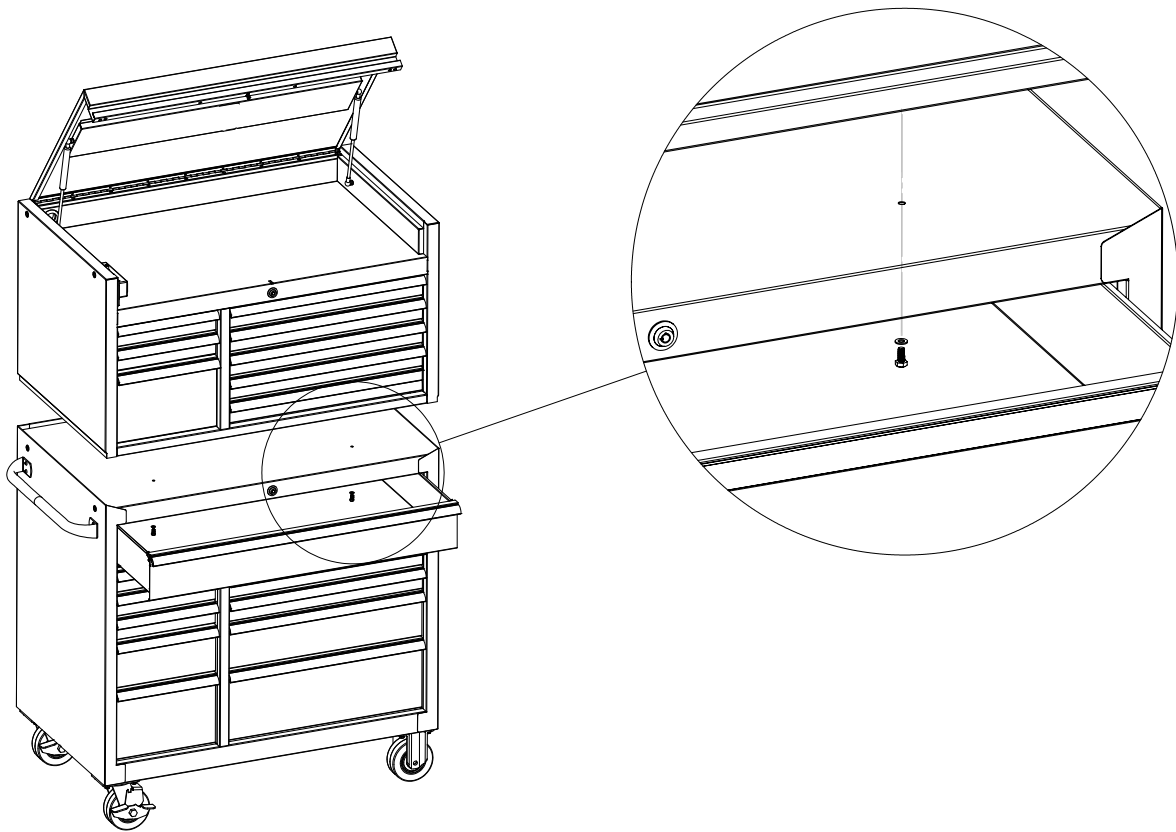
ASSEMBLY

Securing Top Chest and Roller Cabinet

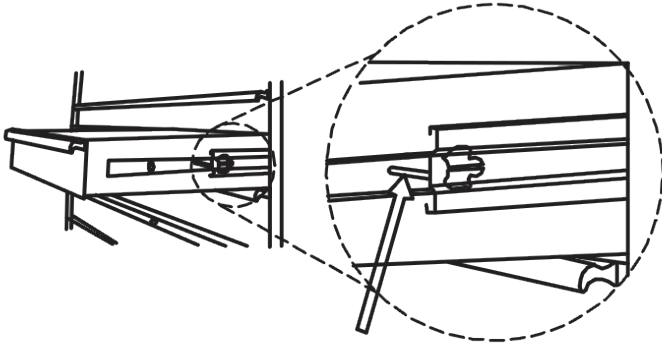
Place the chest on the cabinet. Open the top drawer and locate the two holes under the top surface of the roller cabinet.

Place one flat washer on each of (2) M8 x 16mm hex bolts. (Included with Top Chest)

Insert hex bolt with washer up through the hole of the roller cabinet and into the hole on the bottom side of the top chest. Tighten securely.



OPERATING PROCEDURE

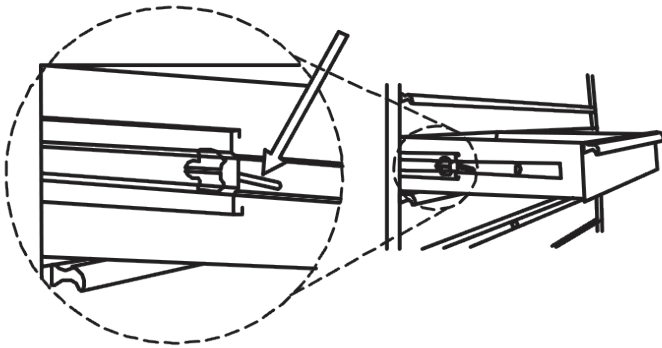


Drawer Removal

Pull drawer out so that it is almost fully extended.

Push up on the black lever on one drawer slide and at the same time push down on the lever on the other side.

With the levers in these positions, pull the drawer out until it releases from the drawer slides.



Drawer Replacement

Extend the drawer slides.

Careful align the brackets on the sides of the drawers with the slots of the cabinet slides. Insert the brackets on the side of each drawer into the slots of the cabinet slides.

Once properly inserted, completely close the drawer to set the slides into their properly functioning positions.

MAINTENANCE

Lubricate the casters once a year with high quality ball bearing grease.

Lubricate the slides twice a year with high quality, petroleum-based lubricant. This may be required more often if operating the tool box in colder climates.

Use mild detergent and water to clean drawer fronts, drawer trim and other surfaces.

Grease and oil can be removed with standard, non-abrasive, non-flammable cleaning products.

Auto wax will help preserve the unit's high gloss finish. Follow directions as provided.

SAFETY

WARNING



Do not attempt to lift the cabinet by its side handle using chains, ropes or lifting device. Side handle may fail resulting in personal injury or damage to the product!
Use a forklift or similar lifting device with forks placed under the bottom of the tool box to move if tool box cannot be moved by two people.

Close the drawers and lock the tool box before moving this product! If drawers are not locked they could open and make the product unstable and tip which may cause personal injury or damage to the product.

Do NOT stand on this product or lean on the drawer or work top.

Wear safety glasses when removing or repositioning the slides. The tool box could slip resulting in personal injury.

Do NOT mount this product on a truck bed or other moving object. This may cause personal injury or product damage. Mounting this product on any surface will void the warranty.

Do NOT tow with power equipment. The product could tip which may cause personal injury or product damage.

Do NOT alter this product in any manner or attach electrical equipment. This may cause personal injury or product damage and will void the warranty.

If using the combination top chest and roller cabinet, the top chest MUST be secured to the roller cabinet by following the directions provided. Not securing the top chest to the roller cabinet may cause the product to become unstable which may cause personal injury or damage to the product.

CAUTION - IMPORTANT PRODUCT INFORMATION



DRAWERS MUST BE CLOSED AND TOOL BOX LOCKED USING KEYS BEFORE MOVING!

The maximum weight for each drawer should not exceed 100 lbs. (45 kg) for single slides and 200 lbs. (90 kg) for drawers with double slides.

Use caution when closing the chest lid. Remove hands from the area before closing to prevent personal injury.

Do NOT pull this product. Push the product to prevent personal injury.

ENGAGE THE BRAKES when not moving this product. Locked casters prevent the product from rolling which may result in personal injury or damage to the product.

This product may become unstable and tip if more than one drawer is open at a time. To prevent personal injury or damage to product, OPEN ONLY ONE DRAWER AT A TIME.

Lock product and properly secure before moving with a forklift or other device.

Keep the product on a level surface. The product could become unstable and tip if stored or moved on an uneven surface which may result in personal injury or product damage.

Remove the work surface from the roller cabinet before installing top chest.