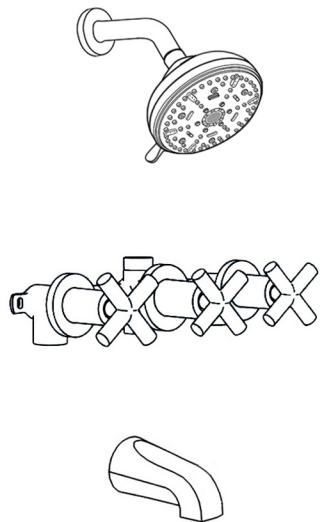


INSTALLATION INSTRUCTIONS

If you have any questions, please feel free to contact us.
Email: lowesteam@aminalife.com



3 Handles Shower Faucet Set

Style may vary by model, but the installation ways are the same

1、New installations

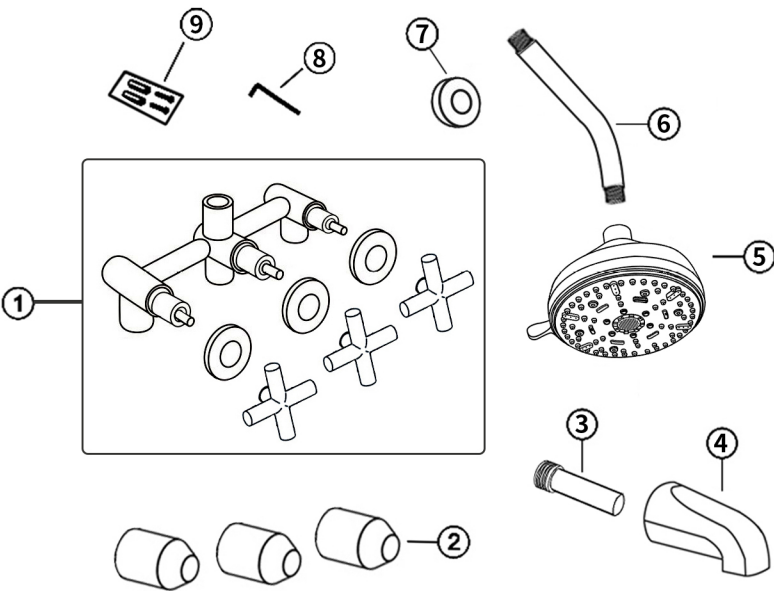
- NOTE!!
- 1. Supply lines should be purged to clean impurities before connecting the unit.
 - 2. The hot water supply should be connected to the left and the cold water supply to the right, when viewed from the operating position. If this is not taken into account can cause permanent damage to the cartridge.
 - 3. Screw connections and test for leaks.
 - 4. Using a spirit level on the cams, the mixer align horizontally, vertically and parallel to the wall.
 - 5. Warm reminder:
In the cold areas or the indoor temperature is less than 39°F in Winter, if no using the faucets for a long time, please turn off the inlet water valve and drain the remaining water inside the supply pipe, which can avoid the faucet damage caused by the expansion of the frozen water.

2、Installation Preparation

- 1. Read the instructions carefully before installing.
- 2. The installation must be performed by a qualified person.
- 3. Installation tools:



3、Accessory list



No	Description	Qty
1	Shower valve and handles	1
2	Protective cover	3
3	Brass adapter	1
4	Tub spout	1
5	Shower head	1
6	Shower arm	1
7	Decorative cover	1
8	Allen-Key	1
9	Screws bag	1

The diagram illustrates the installation of a shower system. On the left, a wall is shown with a cross-shaped cutout for the valve body. To the right, the components are shown: a rain shower head at the top, a tub spout on the left, and hot and cold water inlets at the bottom. The hot water inlet is labeled 'Hot' and the cold water inlet is labeled 'Cold'. The rain shower is labeled 'Rain shower' and the tub spout is labeled 'Tub spout'. The central valve body has four outlets: one for the rain shower, one for the tub spout, and two for the hot and cold water inlets. The hot water inlet is marked with a red 'H' and the cold water inlet is marked with a blue 'C'. The rain shower and tub spout are connected to the valve body using pipe tape and nuts. The hot and cold water inlets are connected to the valve body using pipe tape and nuts. The hot water inlet is connected to the valve body using a red pipe and the cold water inlet is connected to the valve body using a blue pipe.

① A. Wrap the pipe tape to the prepared male water pipe and then connecting to the embedded shower valve. Pay attention to the connection of the water inlet and outlet signs.

B. Measure the installation position of the shower system on the wall according to the needs of the parts and the size of the embedded valve body. Confirming it and mark it with a pen.

