

Installation Guide

TOILET TANK CARRIER



Tools and Materials



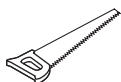
Safety Glasses



Tape Measure



Adjustable Wrench



Hacksaw



Screwdriver



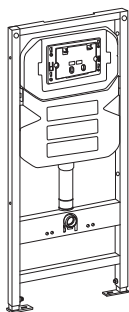
Drill



Pencil

Plus: (1) File (2) Spirit Level (3) Allen Wrench (4) Utility Knife (5) Teflon tape

Parts List



Carrier and Tank*

* Illustrations are for reference only.
Actual product may vary.



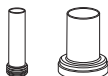
Pipe Clamp



Silicone Grease



Carrier Fixings Kit



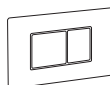
Flush & Drain Pipes



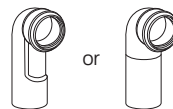
Protection Plugs



Rough-In Box



Flush Plate Installation Kit



(ERI-WT404) (ERI-WT400)
Discharge Elbow

Plus: Eridanus Wall-Hung Toilet Bowl (sold separately)

Prior to Installation



Read the following instructions carefully before you begin this installation

- Inspect the tank carrier to ensure no damages have occurred during transit.

- Check the dimensions of the tank carrier and make sure it is compatible with the wall hung toilet bowl.
- Observe all plumbing and building codes in accordance with your state and local requirements.
- Confirm that the item received will fit in the intended location and that plumbing fixtures are located where legally required before installation begins.
- The step-by-step guide in the installation instructions is for general reference only. Should there be any discrepancies, Eridanus cannot be held liable. Due to the complexity of installing a concealed in-wall toilet tank, which involves structural and plumbing work, it's highly recommended that the product be installed by a licensed professional.
- Read the installation and maintenance instructions carefully before starting installation. Always use proper tools and wear appropriate personal protective equipment.
- The below instructions are for installation in a masonry or concrete wall. The in-wall toilet tank can also be installed within a standard 2x4 (for Model: **ERI-WT404**) or 2x6 (for Model: **ERI-WT400**) stud wall. For either method, professional installation is recommended.

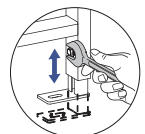
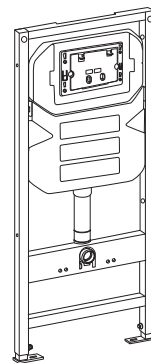
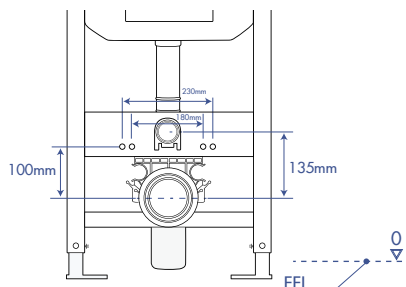
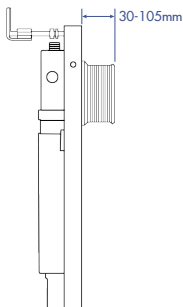
Installation Steps

Step I. Install Tank Carrier

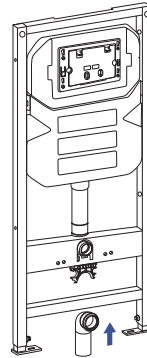
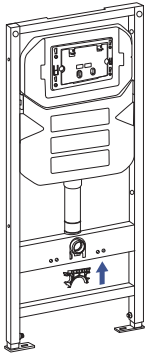
- Put the in-wall tank carrier assembly in place. Make sure its front surface sits 30–105 mm (1-3/16"-4-1/8") behind the desired finished wall.



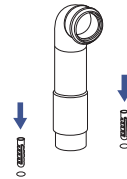
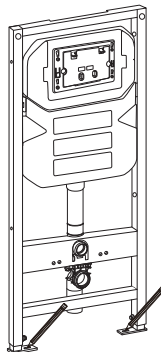
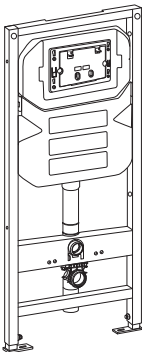
Do not install the tank closer than 30 mm (1-3/16") to the finished wall. Installing the tank too shallow may cause the flush plate to protrude from the wall surface.



- Determine the height of your wall hung toilet bowl. A comfort height is usually between 17" and 19" from the ground.
- As per the desired height of the toilet bowl, adjust the carrier to the correct elevation by loosening the bolts for the legs at the bottom of the carrier.
- Attach the upper bracket for discharge elbow to the carrier.
- Attach the discharge elbow to the upper bracket and ensure the length of it fits properly with the drain pipe. If necessary, cut it to an appropriate length and re-attach it to the upper bracket.



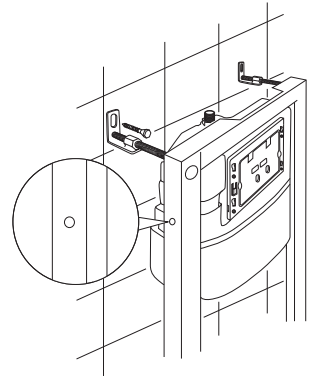
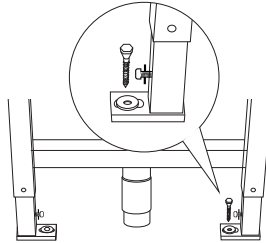
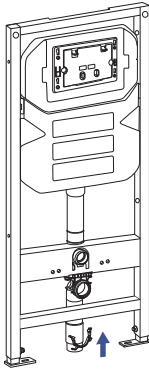
- Apply grease to the joint surface of the drain pipe and the discharge elbow; Install the carrier (with the discharge elbow attached) to the drain pipe.
- Mark the two anchor points on the floor and remove the carrier only (leave the discharge elbow on the drain pipe).
- Using the marks, drill two holes on the floor and place a plastic expansion bolt into each hole.



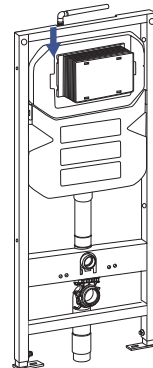
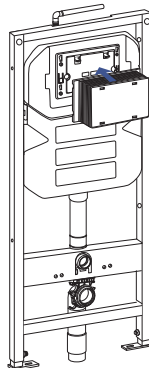
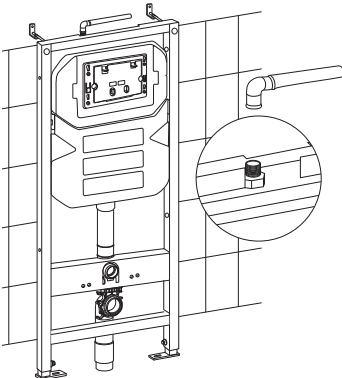
- Attach the carrier to the discharge elbow and use the lower bracket to lock it.
- Secure the two feet of the carrier by inserting a lag screw with a metal washer into each of the pre-drilled holes.
- Secure the carrier to the wall using the provided metal brackets.



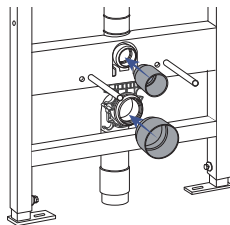
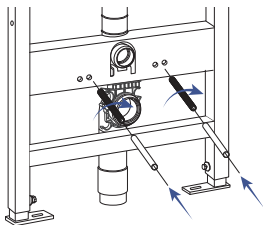
NOTE For stud wall installations, the upper metal brackets on the tank carrier may be omitted. Instead, secure the tank carrier to the wall studs using screws through the pre-drilled holes on both sides of the metal frame.



- Connect the water supply pipe.
- Install the rough-in box to keep debris from entering the flushing system.

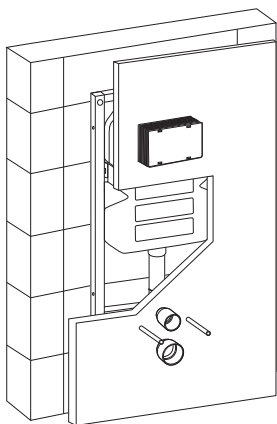


- Screw the mounting studs into proper positions and place a mud protection sleeve over each mounting stud.
- Place the protection plugs into the flush and discharge pipe openings.

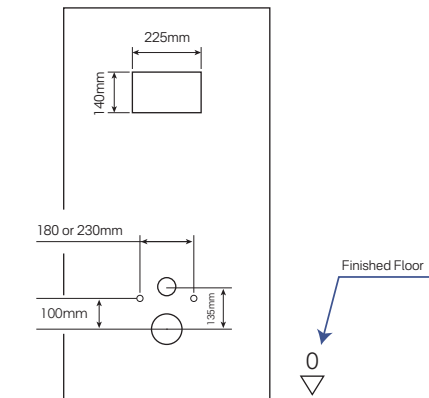


Step II. Install Finished Wall

Finished wall thickness: 1-3/16" to 4-1/8" (30-105mm)
Clearance between tiles and rough-in box ≤ 1/8" (5mm)



Hole Position Dimension Diagram for Finished Wall



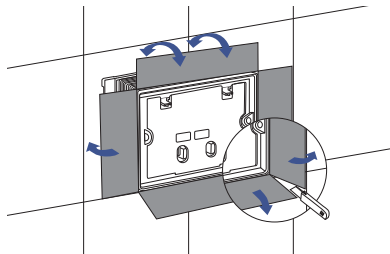
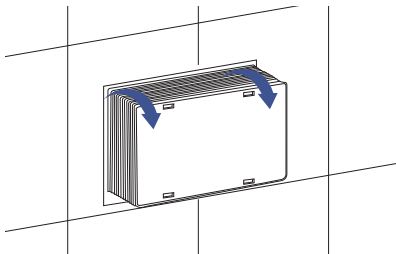
All relevant heights need to be measured manually.
Verify the key positions to avoid construction errors.

Step III. Install Toilet Bowl

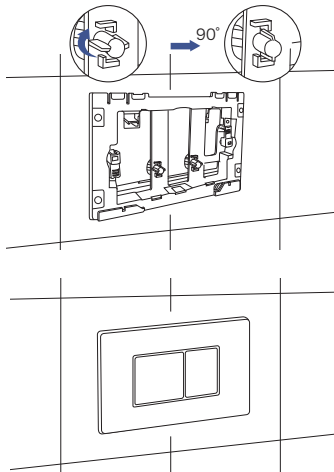
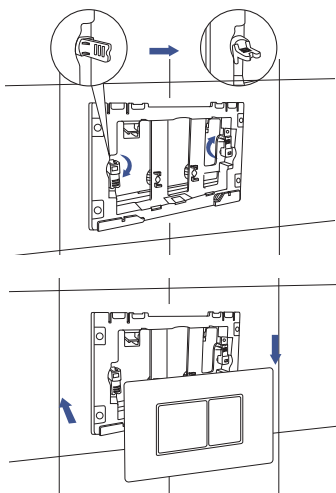
- Install the toilet bowl as per manufacturer's instructions.

Step IV. Install Flush Actuator

- Remove the cover of the rough-in box and cut it along the four corners. Once finished, bend and break away the four panels. Make sure the panels do not extend beyond the finished wall.



- Place the mounting frame into the actuator opening and insert the actuator bolts with the head pointing toward the center and turn 90 degrees.
- Insert each pressing rod into the actuator and turn 90 degrees clockwise until it snaps into place.
- Install the flush plate and test to make sure the toilet flushes properly.



Contact Information

✉ Email

support@eridanus.net

For any product-related questions or concerns, feel free to reach out to us via the email above. Our support team will respond within 24 business hours.

Installation Guide