

说明书

版式设计要求：

1. 字体：Myriad Pro；  
2. 上下页边距为9mm，左右边距为8mm；；  
3. 标注说明书长宽尺寸，单位mm.

Waterdrop

Model: WD-F19C

The WD-F19C is a compatible replacement for the following water filters:

GE® filters  
RPWF, RPWFE



Tested and Certified by NSF International against **NSF/ANSI Standard 42** in model EFF-6019S for the reduction of the claims specified on the Performance Data Sheet, and to **NSF/ANSI 372 (≤0.25% lead)**.

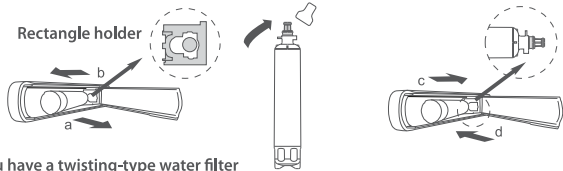
Installation instructions

**Note:** Please make sure to shut off the water supply before installing the filter.

1. If you have a pressing-type water filter

Replace the filter cartridge:

- a.** Open the filter door and remove the old cartridge by pulling the cartridge forward until it cannot go any further.  
**b.** Gently pull out the cartridge to unseat it from the cartridge holder (DO NOT twist it). A small amount of water may drip out.  
**c.** Remove the protective cap from the new filter cartridge. Push the cartridge inward until it is fully seated. Note: Please be aware of the position of the cartridge by referring to the figure.  
**d.** Gently swing the filter inward until it is in the right position. If the cartridge cannot swing easily, check to ensure the filter is properly aligned and fully seated within the cartridge holder.

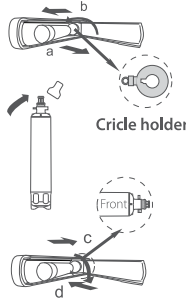


2. If you have a twisting-type water filter

Replace the filter cartridge:

- a.** Open the filter door and remove the old cartridge by pulling the cartridge forward until it cannot go any further.

- b.** Twist the cartridge 1/4 turn counterclockwise. After twisting, remove the cartridge by pulling it away from the cartridge holder. A small amount of water may drip out.  
**c.** Remove the protective cap from the new filter cartridge and align the cartridge with the cartridge holder which ensures the "FRONT" towards the top of the unit. Insert the filter until it fully seated. Twist the cartridge 1/4 turn clockwise to ensure "FRONT" towards outside.  
**d.** Gently swing the filter inward until it is in the right position. If the cartridge cannot swing easily, check to ensure the filter is properly aligned and fully seated within the cartridge holder.



Resetting your filter indicator:

**Note:** These are the most common filter reset instructions. If the instructions don't work for your refrigerator brand, see the documentation that came with your refrigerator.

Refrigerator brand	Instructions
GE® systems	Hold the reset water filter button on the dispenser for 3 seconds.

Storage and maintenance:

- Replace your filter every 6 months or 300 gallons to prevent bacteria and fungus growth in your filter, supply lines, and storage tank.
- Keep your unused filters in a cool, dark, and dry place until you need them.
- If you do not use your water dispenser for more than four days, run two gallons of water before using it to prevent bad tasting water.

Frequently asked questions:

- Q:** Why is it difficult to twist the new filter into the filter housing?  
**A:** The connector may expand because of water pressure. Therefore, it is recommended you push the new filter in with a little bit of force, but not too hard. Then turn it clockwise.
- Q:** Do I need to flush the filter after installation?  
**A:** After installation, it is highly recommended to let water run for a few minutes before use. Water filters are made from advanced coconut carbon block, so there are some carbon fines in the filter. Flushing removes the carbon fines to produce clean water.

**Q:** Must the filter be changed every 6 months?

**A:** Yes, you must replace the filter every six months or sooner if water flow is reduced or if there is heavy sediment / rust present. Over-used filters will degrade the filtration performance.

⚠ Warning

To reduce the risk of property damage due to water leakage, this filter MUST be installed in accordance with the manufacturer's specifications and instructions. This filter unit must be replaced every 300 gallons or 6 months. Failure to follow instructions and operating specifications will void your warranty. Further, manufacturer assumes no responsibility or liability for damages arising out of misuse of the product. GE® is a registered trademark of General Electric Company. GE® is used for reference purposes only.

\*The service life mentioned above is subject to chlorine reduction.  
Actual result varies according to the local water quality.

Performance data sheet

System Model No.: **EFF-6019S**

Replacement Filter Cartridge Model No.: **WD-F19C**

Operating specifications:

Operating Temperature: 33 -100°F/0.6 - 38°C  
Working Pressure: 20 -100 psi/140 - 689 kPa  
Rated Capacity: 300 gallons/1,137 litres  
Flow Rate: 0.5 gpm/1.9 lpm

Substance reduction:

The system has been tested and certified by the NSF International according to NSF/ANSI Standard 42 for the reduction of the substances listed below. The concentration of the indicated substances in water entering the system was reduced to a concentration less than or equal to the permissible limit for the water leaving the system, as specified by NSF/ANSI Standard 42. While testing was performed under standard laboratory conditions, actual performance may vary.

Substance	Inf. Average	NSF Specified Challenge Concentration	Ave. % Reduction(%)	Average Product Water Concentration	Max Permissible Product Water Concentration	NSF Reduction Requirements	NSF Test Report
Chlorine Taste and Odor	2.1 mg/L	2.0mg/L±10%	97.0%	0.063mg/L	N/A	≥50%	J-00295502

⚠ Do not use with water that is microbiologically unsafe or of unknown water quality without adequate disinfection before or after the system. Systems certified for cyst reduction may be used with disinfected water that may contain filterable cysts.

Manufacturer Technical Support

Tel: 1-888-352-3558 (U.S.)  
E-mail: FRG@waterdropfilter.com

Made in China V050  
Qingdao Ecopure Filter Co., Ltd.



印刷品技术要求

- 1. 工艺要求** □覆光膜□覆亚膜□UV油□吸塑油□过油□丝印□镭射  
**2. 材质要求** 80g双胶纸，双面印刷  
**3. 颜色要求** 单黑印刷  
**4. 版面要求** 印刷品文字线条印迹清晰、无重影;印刷品套印准确无偏色、溢墨、指痕等;印刷品上光层均匀、光亮、牢固无粘连;覆膜表面平整、无褶皱、光泽度好;纸张材质正确，切边整齐、压线深浅适中、洁净、无斑点和条痕。

⚠ 图像颜色请依据数码稿印刷  
请不要擅自变更来稿件，如须修改，请联系伊可普做有关决定



青岛伊可普电器有限公司包装设计图纸

品牌	Waterdrop	工厂型号	EFF-6019C
物料编码	03070206019C00	版本号	V050
包材文件名称	03070206019C00 WD-F19C-42-说明书-V050		
尺寸规格	210*140mm	页数	
设计负责人	张鑫龙	审核日期	

DCR变更

(变更日期+变更描述)

2023.05.12 V001-V002  
安装滤芯前先关闭水源提示  
  
2023.05.10 V002-V050  
更换邮箱和LOGO