



Tommy Docks

8608 Progress Way, Weston, WI 54476

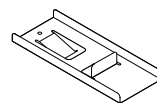
Phone : 715-842-3804

Toll Free : 866-675-1880

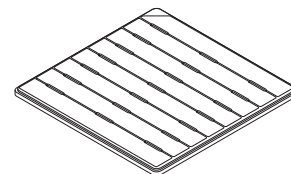
Fax : 715-842-3420

## TD Drop-In Panel

Includes:

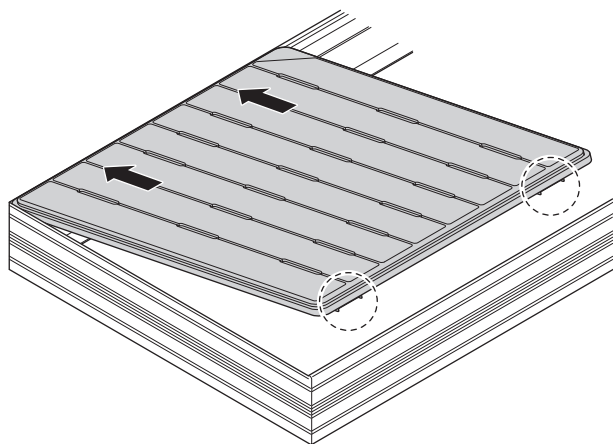


Sliding Lock  
Qty 4



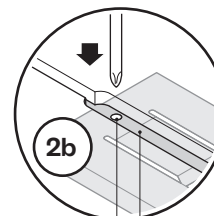
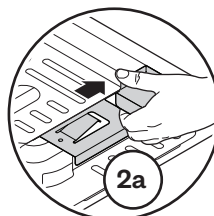
Drop-In Panel  
Qty 2

- 1** Place Drop-In Panel into Aluminum Frame at an angle as shown. Make sure Sliding Locks are facing toward the opposite side of Aluminum Frame.



## **2** Lock Drop-In Panel Into Place

Option #1: Position Sliding Lock into place using your hand (from underside of Drop-In Panel) (2a).  
Option #2: Insert screwdriver through Drop-In Panel Slot and into hole located on Sliding Lock (4b). Push Sliding Lock into place (2c).



Hole located on  
Sliding Lock  
Drop-In  
Panel Slot

