

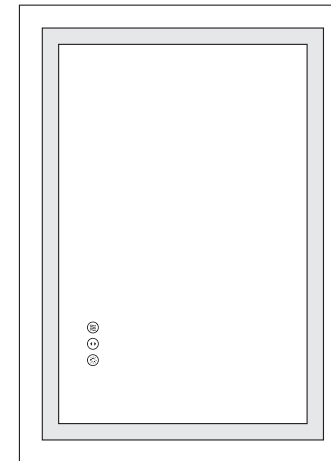
Meaning of Button Lights

Button light	Meaning
White Light ON	Function is Working
Blue Light ON	Function Standby
Light OFF	Power OFF

Troubleshooting

Smart doesn't turn on / Defogging doesn't work	Open the cover of the power supply on the back of the mirror to test the power cables, tighten the cables if they are loose. (Please cut off the power firstly before testing the power supply and cables)
Part of light strip is fault	Firstly, please pull the outer silicone strip away and press the inner light strip inward. If it still doesn't work, need replace the strip light.
After using for a few month, the light doesn't work.	Please contact us to replace the power supply.

User Manual



Manufacturer: Guang Dong Kosmo Smart Home Devices Co., Ltd.
Address: No. 65, Linhai North Road, Shatian Town, Dongguan City,
Guangdong Province, China



Before Installation

Please Note Before Installation:

1. Please read all instructions carefully before assembling the item.
2. After opening the package, first check if there is transit damage or missing parts.
3. Please power the mirror with plug to test the mirror and each functions before installation.
4. Assembly by two or more adults is highly recommended.
5. Disconnect power before installing, adding or changing any components.
6. Ensure that the fixing location is able to take the weight of the complete fitting.
7. Keep the voltages between 110V and 120V. If the voltage exceeds 120V, please use transformer.
8. To connect the wires to electrical junction box, a qualified technician or electrician is highly recommended.
9. Before cleaning the mirror, make sure that the power supply is disconnected.
10. To ensure a better luminous effect of the mirror, it is recommended to remove the protective film from the edge of the mirror before use.
11. To ensure the agility of the touch screen function, it is recommended to tear the protective film in front of the mirror.

Specifications and Parameters

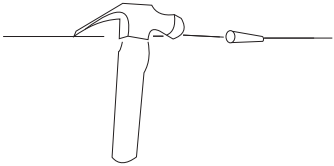
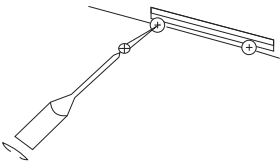
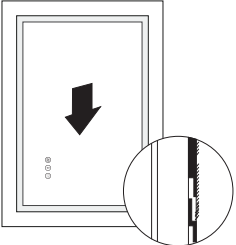
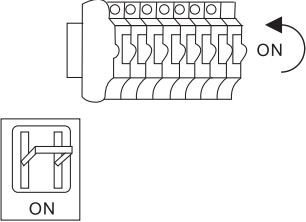
Product No.	Size	Thickness	Touch Button	Color Temperature	Lumen	CRI	Power(w)	Input Voltage(V)	Weight (KG)
KM005-S1R5070UL	20"x28"	1.5"	3	3000/4000/6000	3602	90	48	100-120V	5.45
KM005-S1R6080UL	24"x32"	1.5"	3	3000/4000/6000	4370	90	48	100-120V	7.01
KM005-S1R6090UL	24"x36"	1.5"	3	3000/4000/6000	4754	90	60	100-120V	7.78
KM005-S1R7090UL	28"x36"	1.5"	3	3000/4000/6000	5138	90	60	100-120V	8.70
KM005-S1R7691UL	30"x36"	1.5"	3	3000/4000/6000	5407	90	60	100-120V	9.50
KM005-S1R8181UL	32"x32"	1.5"	3	3000/4000/6000	5215	90	60	100-120V	9.50
KM005-S1R9090UL	36"x36"	1.5"	3	3000/4000/6000	5906	90	80	100-120V	10.80
KM005-S1R9696UL	38"x38"	1.5"	3	3000/4000/6000	6367	90	80	100-120V	12.55
KM005-S1R10060UL	40"x24"	1.5"	3	3000/4000/6000	5138	90	60	100-120V	8.40
KM005-S1R10070UL	40"x28"	1.5"	3	3000/4000/6000	5522	90	60	100-120V	10.00
KM005-S1R10076UL	40"x30"	1.5"	3	3000/4000/6000	5752	90	80	100-120V	10.60
KM005-S1R10080UL	40"x32"	1.5"	3	3000/4000/6000	5906	90	80	100-120V	10.75
KM005-S1R10091UL	40"x36"	1.5"	3	3000/4000/6000	6328	90	80	100-120V	12.40
KM005-S1R100100UL	40"x40"	1.5"	3	3000/4000/6000	6674	90	80	100-120V	15.10
KM005-S1R12080UL	48"x32"	1.5"	3	3000/4000/6000	6674	90	80	100-120V	15.10
KM005-S1R12160UL	48"x24"	1.5"	3	3000/4000/6000	5971	90	80	100-120V	13.50
KM005-S1R12176UL	48"x30"	1.5"	3	3000/4000/6000	6586	90	80	100-120V	14.80
KM005-S1R12191UL	48"x36"	1.5"	3	3000/4000/6000	7169	90	80	100-120V	17.05
KM005-S1R121100UL	48"x40"	1.5"	3	3000/4000/6000	7507	90	80	100-120V	18.90
KM005-S1R13975UL	55"x30"	1.5"	3	3000/4000/6000	7212	90	80	100-120V	16.25
KM005-S1R13991UL	55"x36"	1.5"	3	3000/4000/6000	7826	90	80	100-120V	19.75
KM005-S1R15060UL	60"x24"	1.5"	3	3000/4000/6000	7058	90	80	100-120V	15.70
KM005-S1R15070UL	60"x28"	1.5"	3	3000/4000/6000	7442	90	80	100-120V	16.50
KM005-S1R15076UL	60"x30"	1.5"	3	3000/4000/6000	7672	90	80	100-120V	18.16

KM005-S1R15090UL	60"x36"	1.5"	3	3000/4000/6000	8210	90	100	100-120V	20.40
KM005-S1R150100UL	60"x40"	1.5"	3	3000/4000/6000	8594	90	100	100-120V	21.10
KM005-S1R18181UL	72"x32"	1.5"	3	3000/4000/6000	9082	90	100	100-120V	22.19
KM005-S1R18191UL	72"x36"	1.5"	3	3000/4000/6000	9473	90	100	100-120V	24.65
KM005-S1R181100UL	72"x40"	1.5"	3	3000/4000/6000	9811	90	100	100-120V	27.20
KM005-S1R19591UL	77"x36"	1.5"	3	3000/4000/6000	9976	90	150	100-120V	31.85
KM005-S1R21380UL	84"x32"	1.5"	3	3000/4000/6000	10245	90	150	100-120V	25.45
KM005-S1R213100UL	84"x40"	1.5"	3	3000/4000/6000	11013	90	150	100-120V	31.75
KM005-S1R22396UL	88"x38"	1.5"	3	3000/4000/6000	11244	90	150	100-120V	25.85
KM005-S1R24091UL	96"x36"	1.5"	3	3000/4000/6000	11712	90	150	100-120V	32.01

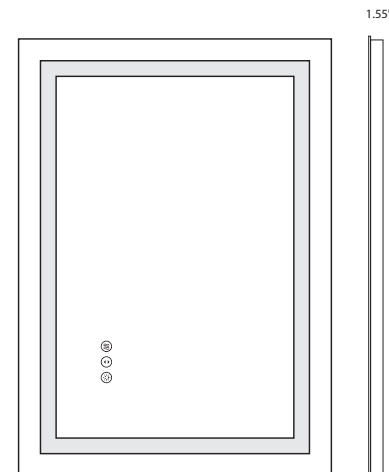
Please Notes:

Due to the workmanship production process of the items, the size error does not exceed 1-2 inches.

Installation Instruction

<p>Step 3</p>  <p>Knock the nail in.</p>	<p>Step 4</p>  <p>1. Tighten the screw to ensure the wall bracket stay sturdy on the wall. 2. Hang the mirror on the wall basket.</p>
<p>Step 5</p>  <p>When installing, pay attention to follow the direction of the switch (easier to operate) to install.</p>	<p>Step 6</p>  <p>Turn on the power switch.</p>

Check Functions



Before installation, please check to make sure these functions work properly:



Anti-fog Switch: When the button is pressed, a blue light indicates the off state, and a white light indicates the on state. Repeated touch will toggle between the on and off states. The anti-fog function takes effect within 10 minutes after being turned on. Therefore, you can turn it on 10 minutes before taking a shower to avoid energy waste. The anti-fog function will automatically turn off if there is no manual touch within 60 minutes after being turned on.



Dim switch: The smart light supports 10% to 100% brightness adjustment, just long press the button. This button has memory function, the next time you open the mirror it will be in the same brightness it was in before it was last closed, which means that you don't have to touch the button each time.



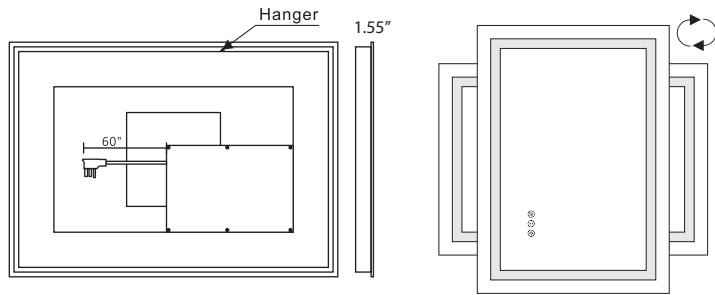
Color temperature switch: The front and back lights all have three color temperatures that can be switch (3000K / 4000K/ 6000K), just need to short press this button. And this button has a memory function as well.



Long press the anti fog button, and the indicator lights of the three switches will not light up. Short press the anti fog button, and the three switch lights will turn blue again (entering standby mode). In standby mode, press the corresponding buttons on the mirror to start working.

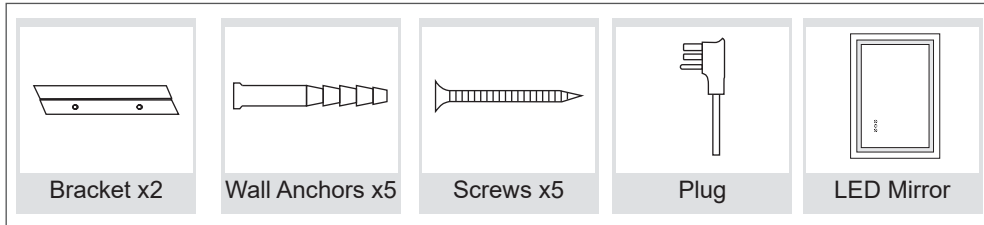
PS:To ensure the agility of the touch screen function, it is recommended to tear the protective film.

User Manual

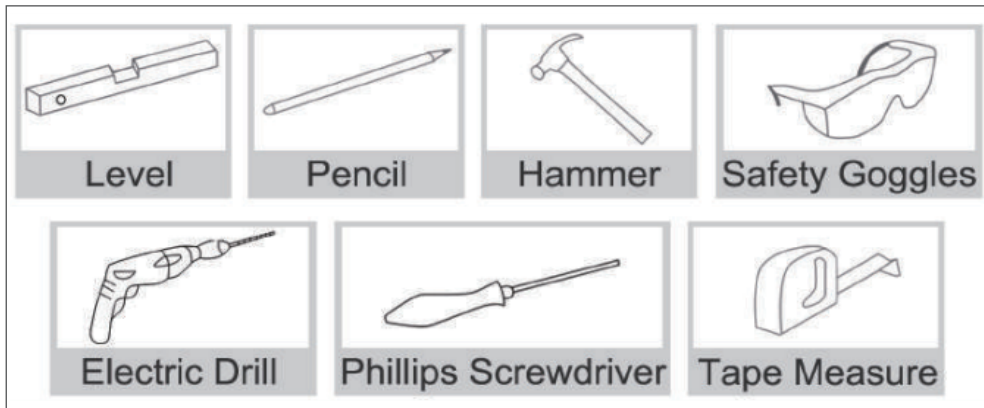


Horizontal/ Vertical Installation

PACKAGE CONTENTS



YOU MAY NEED THESE TOOLS



Installation Instruction

Method 1: Plug in	Method 2: Hardwire
<p>Insert the plug into the socket, keep the voltages between 110V and 120V. If the voltage exceeds 120V, please use transformer.</p>	<p>Cut the plug, connect the same color wire and tighten them (Disconnect power before hardwire).</p>
Step 1	Step 2
<p>Draw a straight line with a ruler to keep the mirror horizontal.</p>	<p>Drill 2 holes or 4 holes according to screws you received. (After installing, please tear the protective film of the mirror then to use.)</p>