

USER'S MANUAL

Pre-lit Christmas Tree

THIS INSTRUCTION BOOKLET CONTAINS **IMPORTANT** SAFETY INFORMATION. PLEASE READ AND KEEP FOR FUTURE REFERENCE.

IMPORTANT

PLEASE READ THIS MANUAL CAREFULLY BEFORE USING THE SQUAT MACHINE!

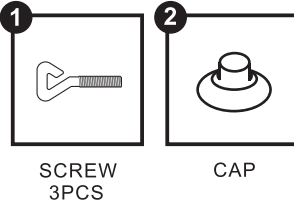
Important Safety Information

Thank you for choosing our product. To guarantee your safety and health, please use this equipment correctly. Please read the information below carefully before using this equipment.

- 1.It is important to read this entire manual before assembling and using the equipment. Safe and efficient use can only be achieved if the equipment is assembled, maintained and used properly. It is your responsibility to ensure that all users of the equipment are informed of all warnings and precautions.
- 2.Before starting any exercise program you should consult your doctor to determine if you have any physical or health conditions that could create a risk to your health and safety, or prevent you from using the equipment properly. Your doctor's advice is essential if you are taking medication that affects your heart rate, blood pressure or cholesterol level.
- 3.Be aware of your body's signals. Incorrect or excessive exercise can damage your health. Stop exercising if you experience any of the following symptoms: Pain, tightness in your chest, irregular heartbeat, extreme shortness of breath, feeling light headed, dizzy or nauseous. If you do experience any of these conditions you should consult your doctor before continuing with your exercise program.
- 4.Keep children and pets away from the equipment. The equipment is designed for adult use only.
- 5.Use the equipment on a solid, flat level surface with a protective cover for your floor or carpet. For safety, the equipment should have at least 0.5 meter of free space all around it.

PRE-LIT CHRISTMAS TREE INSTRUCTION MANUAL

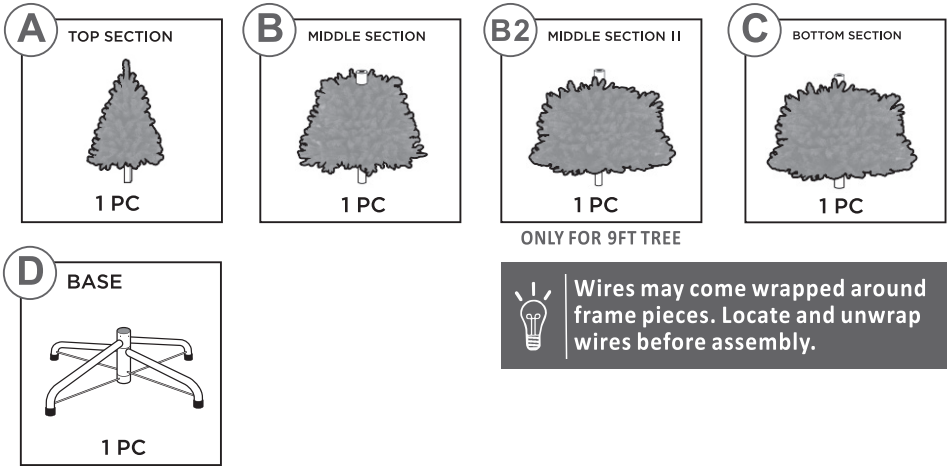
HARDWARE



WARNING: There are plastic caps on the end of each pole that are useless, please make sure to remove them before assembling.

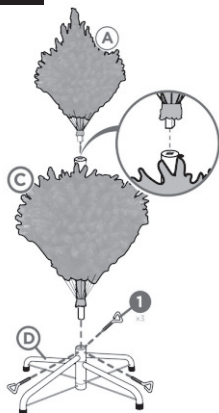
If the caps were broken or missing, please don't worry.

PARTS

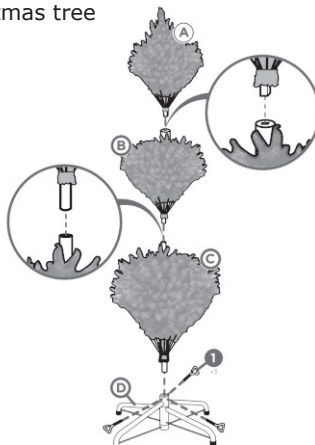


PRODUCT ASSEMBLY

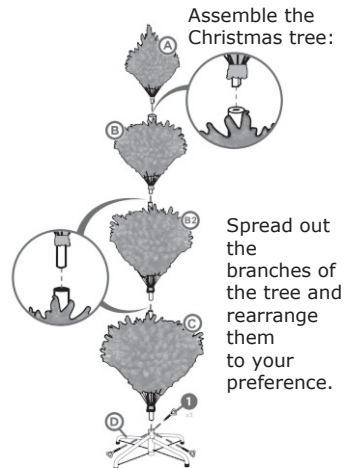
1 Assemble the Christmas tree



5FT TREE
1.5M TREE



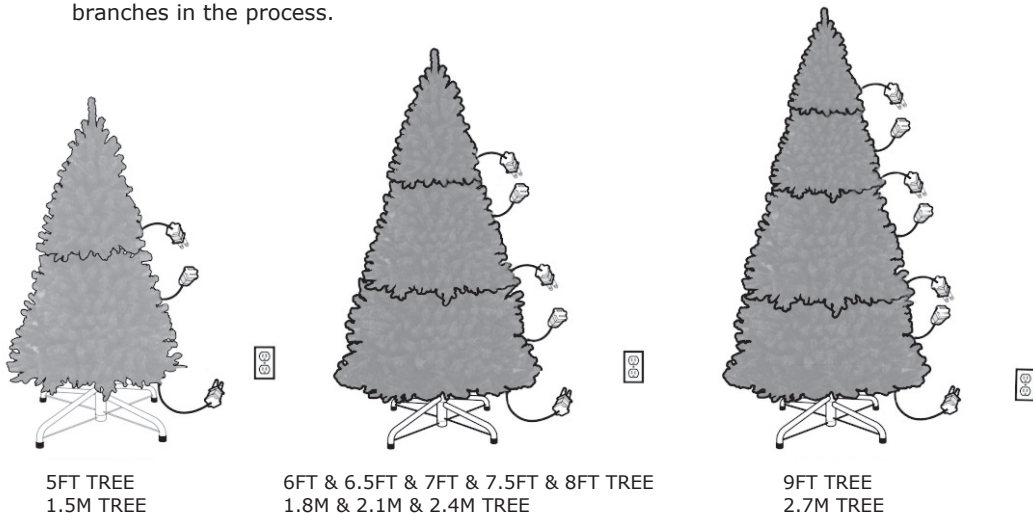
6FT & 6.5FT & 7FT & 7.5FT & 8FT TREE
1.8M & 2.1M & 2.4M TREE



9FT TREE
2.7M TREE

PRODUCT ASSEMBLY

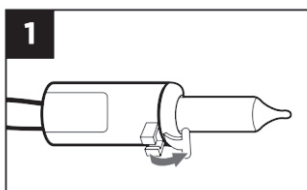
- 2** Connect all the corresponding plugs.
Spread out the branches and arrange them to your preference.
Locate the power cord in the part C bottom, attach the part E adapter, and insert into a wall outlet to turn the lights on.
- Clean the tree with a slightly damp cloth and let it dry naturally.
Raise all branches to original upright position; make sure not to damage any branches in the process.



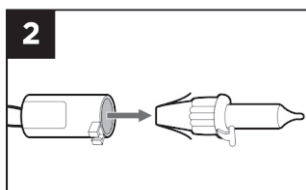
CLEANING & STORAGE

- Store this tree in a cool and dry place away from heat and moisture.
 - Before putting this tree in storage, do the following:
 - Completely remove all decorations.
 - Clean the tree with a slightly damp cloth and let it dry naturally.
- Raise all branches to original upright position; make sure not to damage any branches in the process.

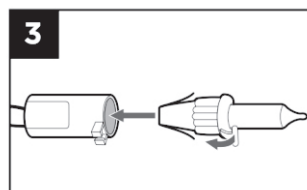
CHANGING BURNED LIGHTS



Release the latch located on the side of the bulb.



Carefully pull the bulb out of the socket.



Insert a new bulb and lock the latch.