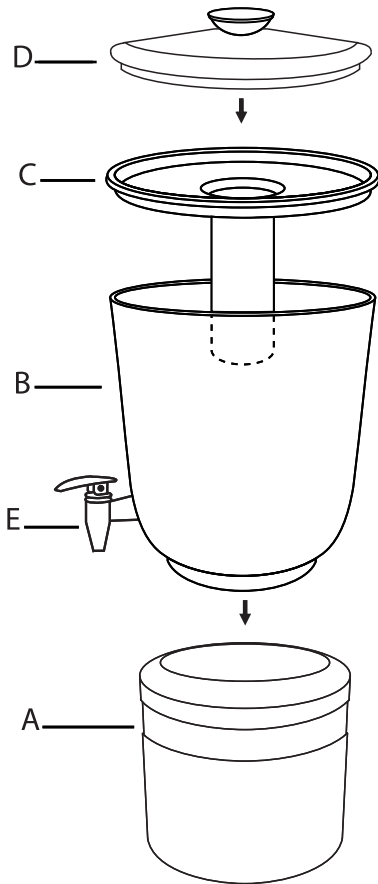


ASSEMBLY INSTRUCTIONS FOR DOUBLE WALL BEVERAGE DISPENSER 3 GALLON DS-38944G

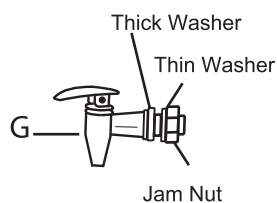
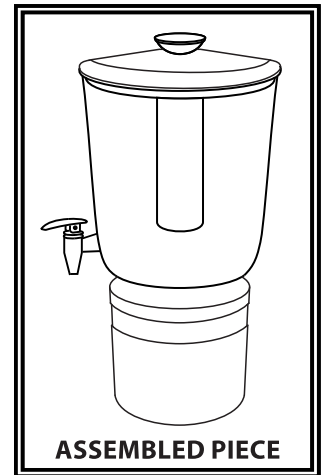


Note :

To avoid leakage, make sure the jam nut is properly tightened against the inside of the thin washer. Test before use, tighten as needed from the inside of the reservoir. (refer to the image of the spigot).

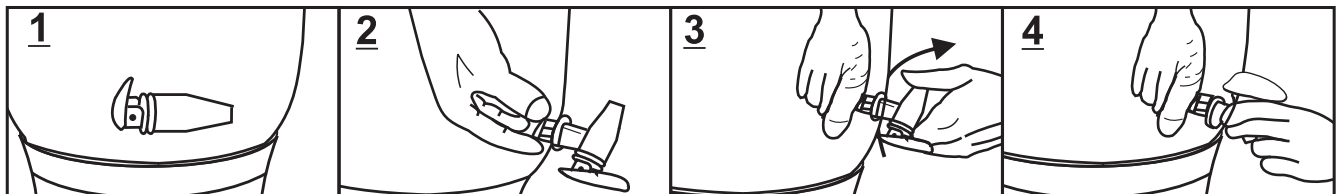
Assembling and Use :

1. Remove reservoir (B) from stainless steel base (A).
2. Fill Stainless steel base (A) with ice leaving room to insert reservoir (B).
3. Remove stainless steel ice core (C) from reservoir (B) and remove lid (D).
4. Before use check to ensure that the spigot (E) is in down position as shown in image. Fill reservoir (B) to the fill line printed on back with your choice of beverage.
5. Fill stainless steel ice core (C) with ice and put lid (D) onto ice core.
6. Insert ice core (C) and lid (D) into reservoir (B).
7. Lift handle up on spigot (E) to dispense beverage. Release handle downward to its original position to stop dispensing.



CARE AND CLEANING

1. Hand wash reservoir, ice liner and lid in hot water with soft sponge or cloth using a mild, non-abrasive cleanser.
2. Rinse with hot water. Ensure that the spigot is open to flush and rinse water through for cleaning.
3. Hand wipe with non-abrasive, soft cloth.
4. Close spigot after cleaning is complete.



TIPS TO PREVENT LEAKAGE

1. Thread faucet into reservoir up to its last turn and stop at 9 O'clock.
2. Hold the faucet in place while tightening the jam nut from the inside of the reservoir as tight as possible.
3. Once the jam nut is tightened hold it in place then turn the faucet head to 12 O'clock. By holding the jam nut while turning the faucet will give you better leverage.
4. Faucet should be tightly fastened in place.

For questions or concerns about this product, contact the Customer Service Team 8.00 a.m. to 8.00 p.m. EST at 1-866-397-9312 or E-mail: customerservice@dewansons.com