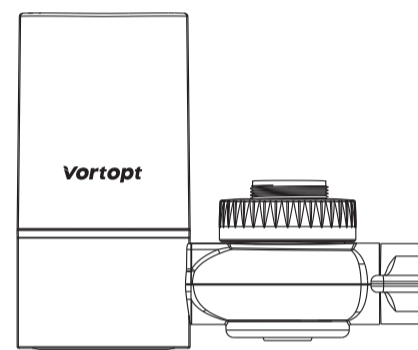


Vortopt

Tap Water Purifier

Activated Carbon Fiber Faucet Filtration System



If you need any assistance during installation or use, we have a professional customer service team and will solve your problem in a timely manner.

Functions

- Faucet filtration system is easy to use and install.
- Two water outlet model ways that meets your daily needs.
- Tested and certified by NSF. BPA-Free material.
- The filtration accuracy is up to 0.2μm.
- ACB filter has been proved to have better performance than ordinary carbon material.
- Effectively removes chlorine, heavy metals, and odors while retaining beneficial minerals and alkaline in the water.

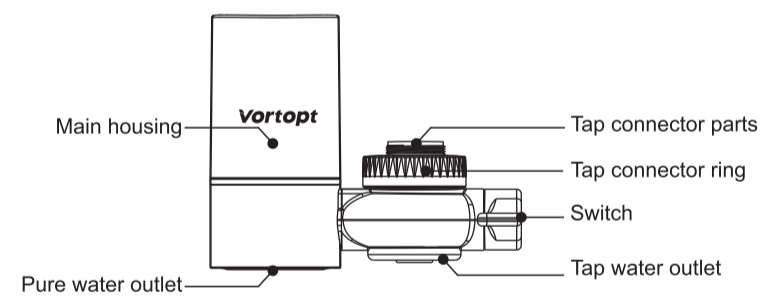
Parameter

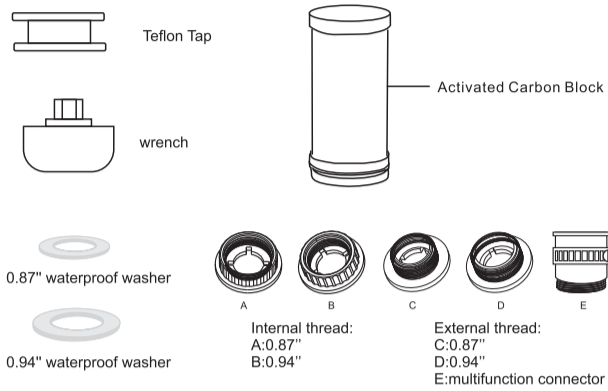
Product	T1 Faucet Filtration System
Filter material	Activated Carbon Block
Flow rate	2L/min ;0.5 GPM
Working Pressure	15-100 psi
Applied temperature	41-122°F

Noted

If the cartridge is dirty which is normally working , vendor will not handle any responsibility .
Man-made damage , Vendor will not be responsibility .

Assembly List





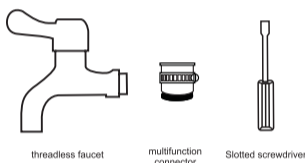
If your faucet is not suitable, please contact us for additional adapters.
Email: vortopt_service@163.com

Installation instructions

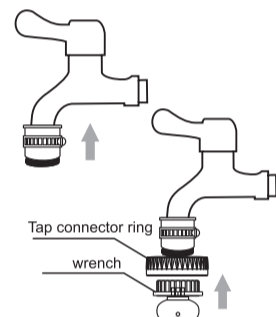
1. Remove the original faucet adapter if there is an adapter in your faucet. Choose the right adapter to match your faucet threading.

How to choose the right adapter
Choose internal threaded faucets from A,B
Choose external threaded faucets from C,D

Installation method of three different faucet
1. Installation method of threadless faucet
Warm Tips: Please prepare the necessary tools

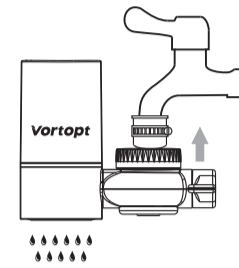


Step one:
Loose the multifunction connector by screwdriver, put it on the outlet of threadless faucet. Then use the screwdriver to tighten the connector. Make sure it is tightly fixed to avoid water leakage

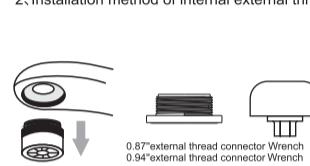


Step two:

Please check the connecting rings and make sure the washer is inside. Or it will cause water leakage. If the washer is inside, tighten the rings and multifunction connector, then turn on the faucet filtration system. Switch between two water outlet modes to check for leaks.
If there is no water leakage, turn on the faucet to rinse the purifier for while until it flow out clean and pure water.



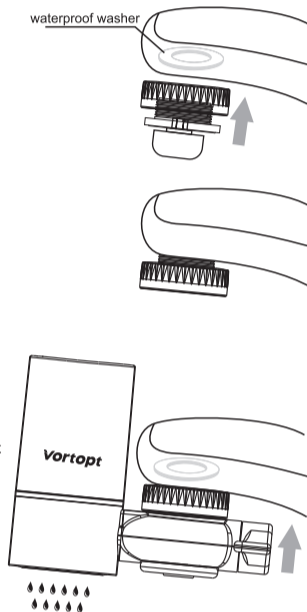
2. Installation method of internal external thread faucet



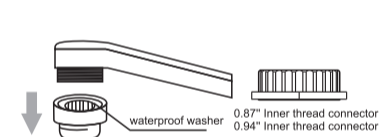
Step One.
Prepare required accessories (as shown above)
Remove the bubbler from the faucet (as shown above)

Step Two,
Choose the suitable waterproof washer and external thread connector.
Install them into the faucet spout and use the wrench to tighten it. (Note: Remember to install the waterproof washer to avoid water leakage.)

Step Three,
Check the waterproof washer. Tighten the faucet filtration system into the inner thread connector. Turn on the faucet filtration system. Switch between two water outlet modes to check for leaks.
If there is no water leakage, turn on the faucet to rinse the purifier for while until it flow out clean and pure water.



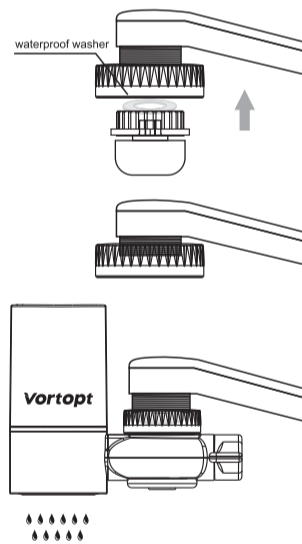
3. Installation method of external thread faucet



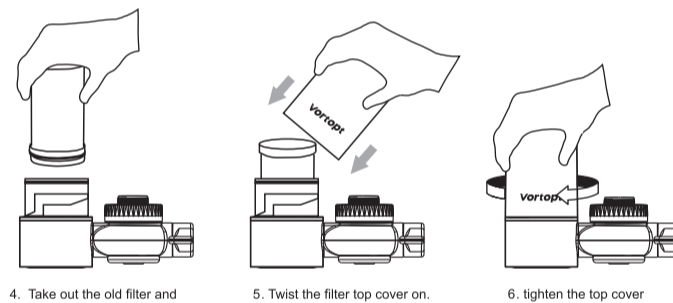
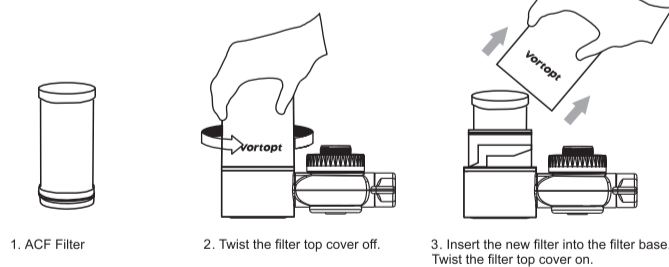
Step One.
Prepare required accessories (as shown above)
Remove the bubbler from the faucet (as shown above)

Step Two,
Choose the suitable waterproof washer and inner thread connector. Install them into the faucet spout and use the wrench to tighten it. (Note: Remember to install the waterproof washer to avoid water leakage.)

Step Three,
Check the waterproof washer. Tighten the faucet filtration system into the inner thread connector. Turn on the faucet filtration system. Switch between two water outlet modes to check for leaks.
If there is no water leakage, turn on the faucet to rinse the purifier for while until it flow out clean and pure water.



Installation and replacement

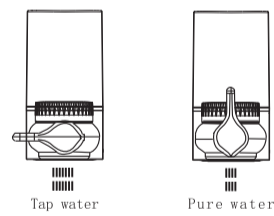


Suggestion of filter lifespan:

The service life of the filter will be affected by water pressure, water quality, water consumption and other factors. The performance and service life of the filter will change in different application. Therefore, we suggest to maintain and replace the filter in every 3-6 months. It is only for reference, and the replacement cycle shall be subject to the actual situation of daily water use.

How to Use

After installation, turn on the faucet.
Switch the lever to "tap" position (the left picture), and unfiltered water will run through. Switch the lever to its "pure" position (the right picture), and filtered water will run through.



Note

Please do not run hot water above 50°C / 122°F, as it will damage the faucet.

Warnings

1. Applicable water pressure for the purifier is 0.1-0.4Mpa. When using in high pressure areas, please reduce the water consumption before use. If the water flow is too much, it will affect the filtering performance and cause leakage even damage.
2. Applicable temperature is 41-122° F. Please do not use in hot water. If you accidentally passhot water through the purifier, the filtered water will temporarily smell bad.
3. Please do not block the water outlet of the purifier or connect it with other equipment to avoid damage.
4. Children must use under adult supervision to avoid accidental injury.
5. If you need to store pure water, you have to use a clean container and store it in a refrigerator for refrigeration, but not for more than 24 hours.
6. Before each use, run water through the filter for 5 to 10 seconds to activate the filter. Flush the system for 1 minute before use after a long time of non-use.
7. If you encounter any problems with use or installation, please feel free to contact our customer service.