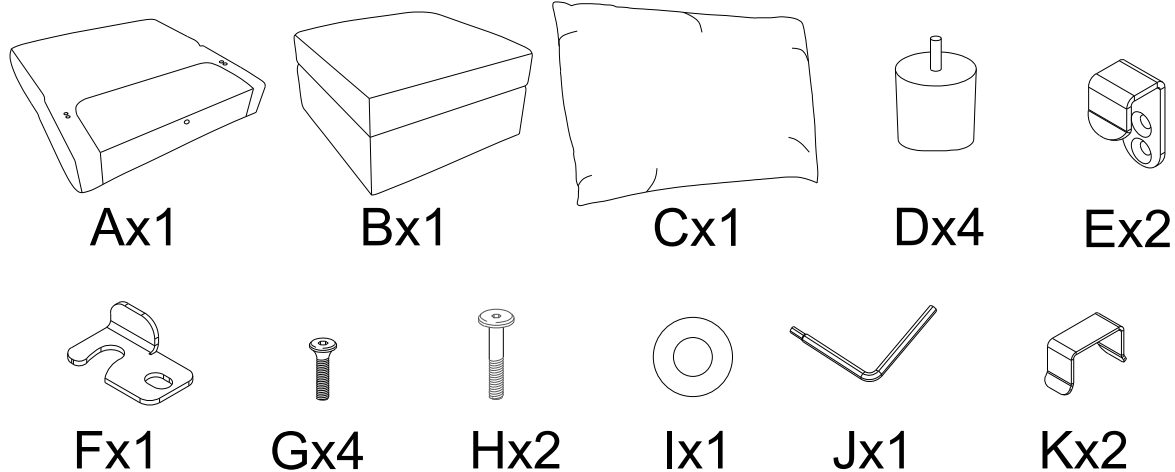


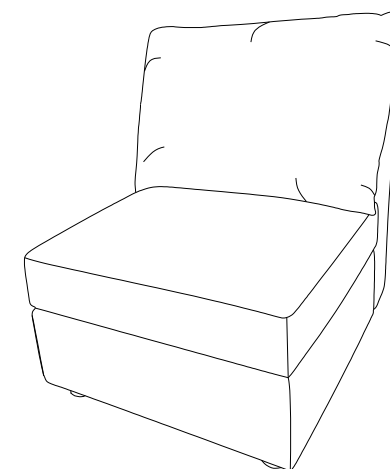
Part List

- ①Check the parts carefully
- ②Make sure everything's included before assembly
- ③Please reach out to us if you're missing any parts

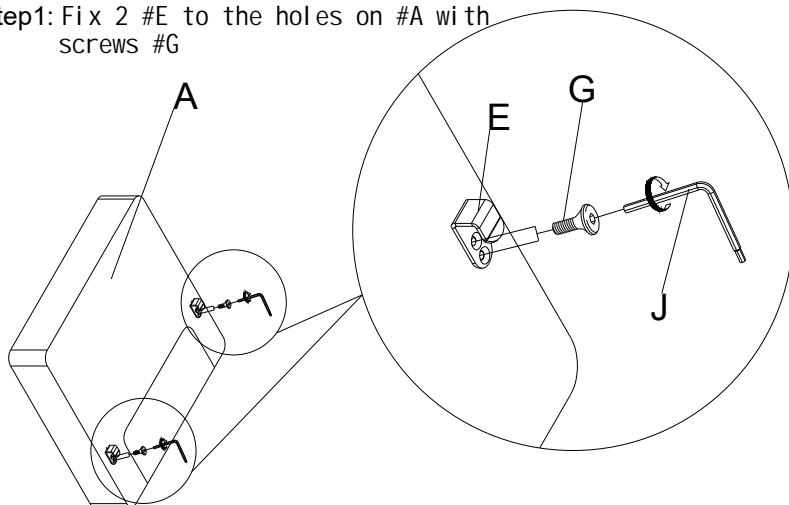


Assembly Guide

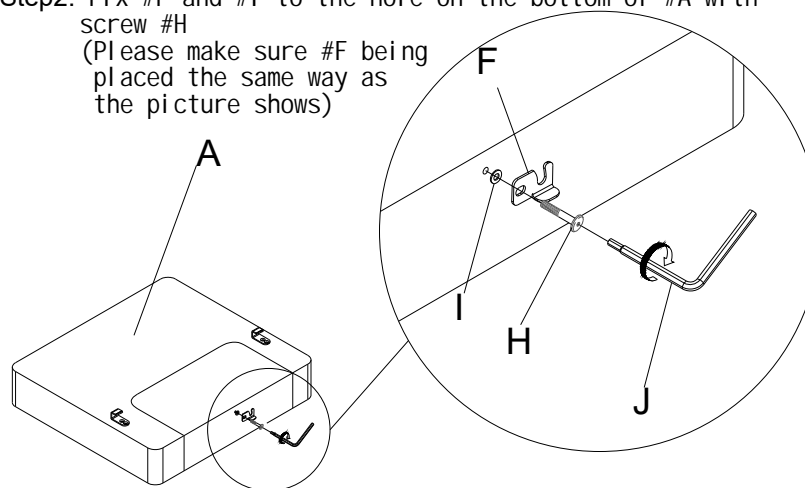
Armless sofa



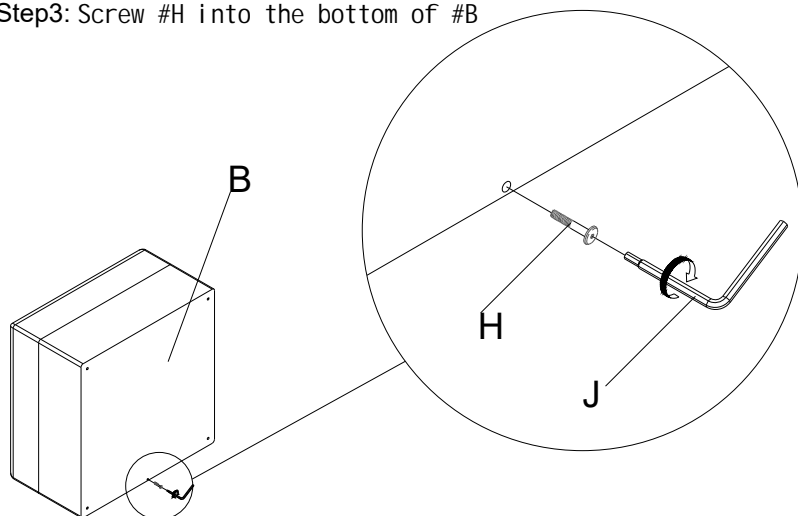
Step1: Fix 2 #E to the holes on #A with screws #G



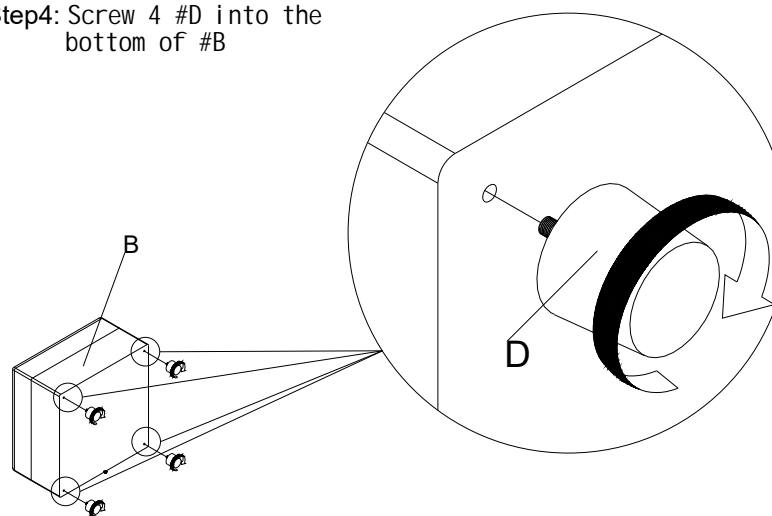
Step2: Fix #F and #I to the hole on the bottom of #A with screw #H
(Please make sure #F being placed the same way as the picture shows)



Step3: Screw #H into the bottom of #B

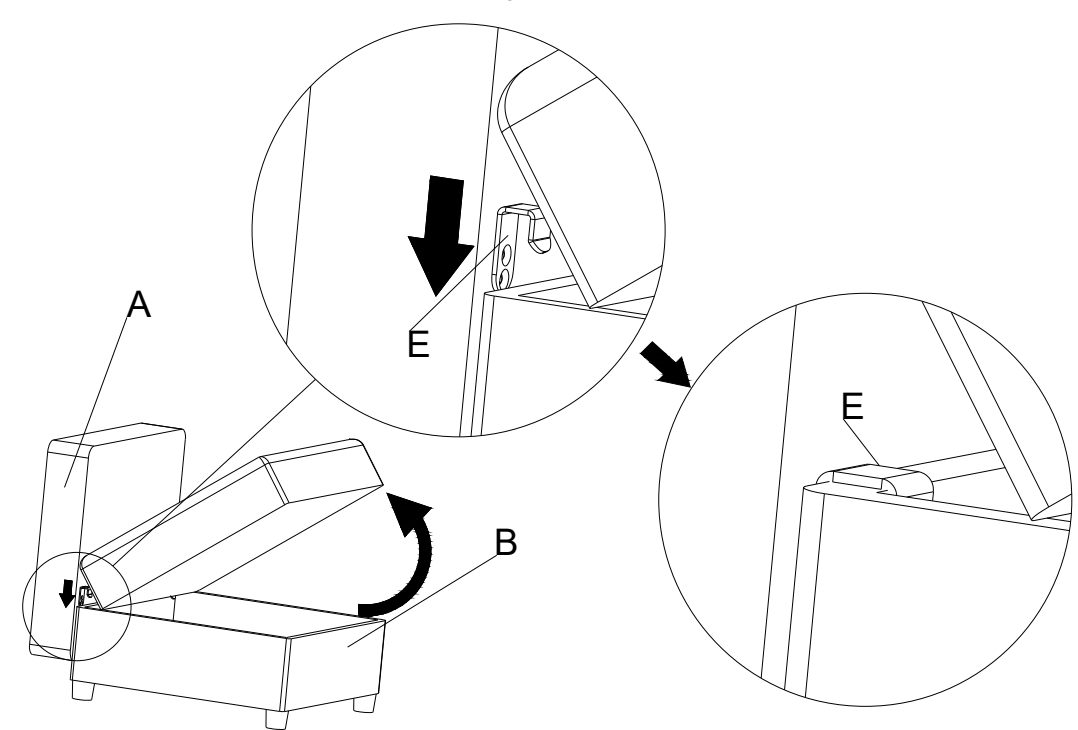


Step4: Screw 4 #D into the bottom of #B

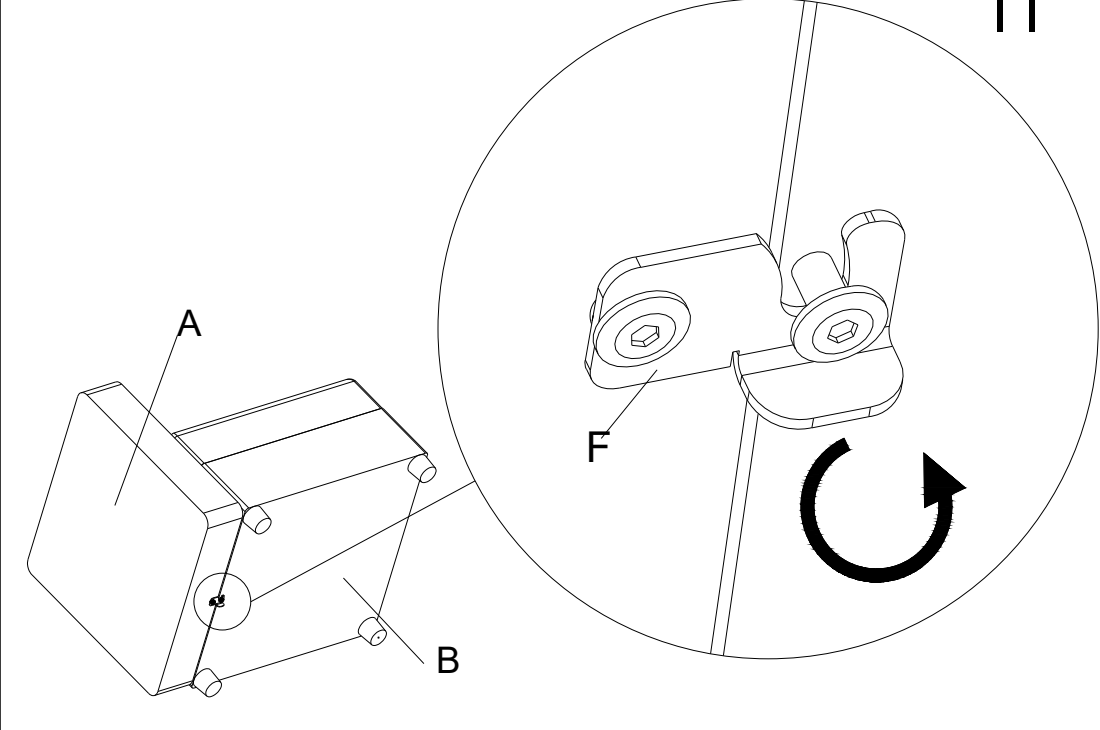


- ①Read this manual before assembly and please follow the instructions step by step
- ②Keep the manual safely for using next time

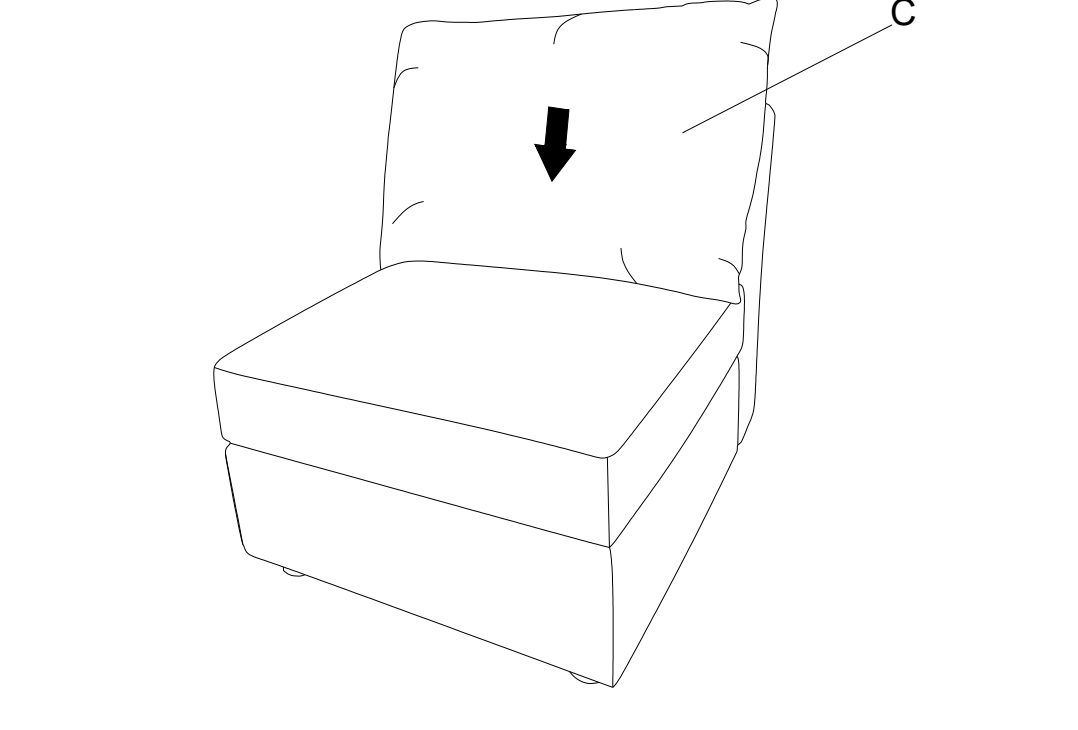
Step5: Lift the seat up before snapping #A into #B with #E



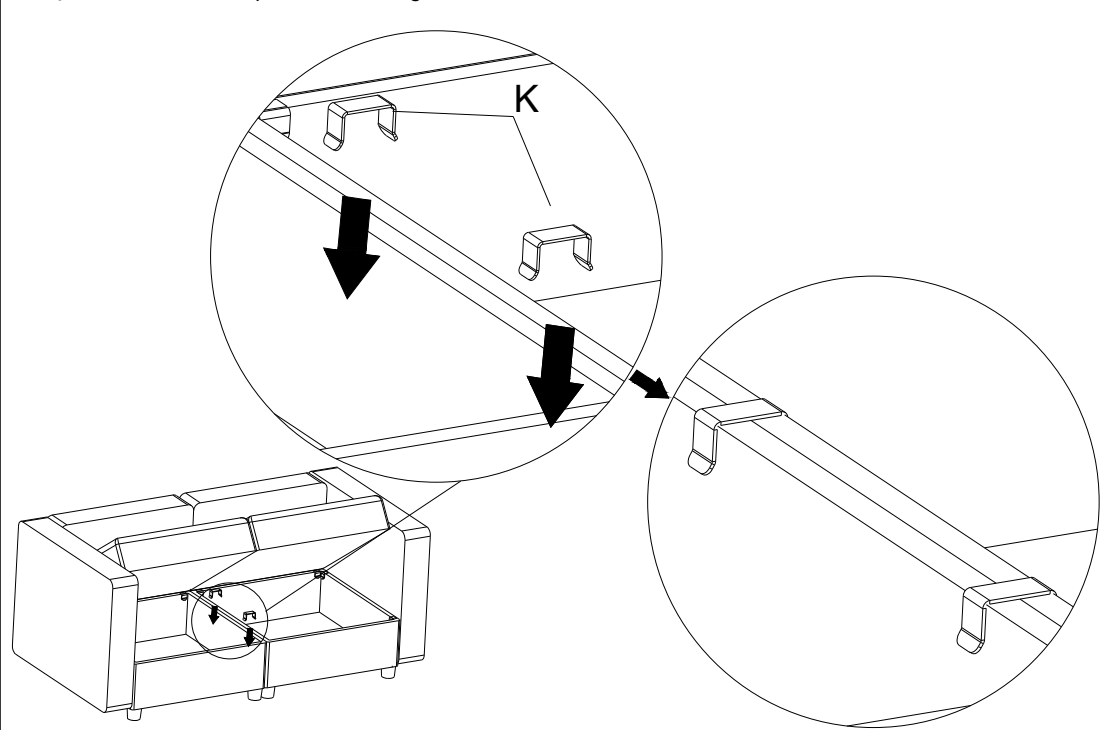
Step6: Turn the #F to lock in place



Step7: Place the cushion #C on

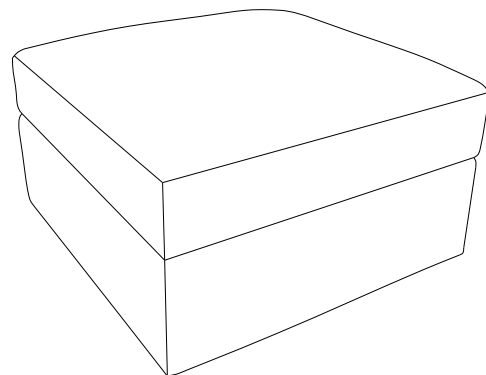


Step8: Attach multiple seats together with #K

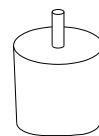


Part List

- ①Check the parts carefully
- ②Make sure everything's included before assembly
- ③Please reach out to us if you're missing any parts



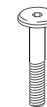
Bx1



Dx4



Jx1



Hx1

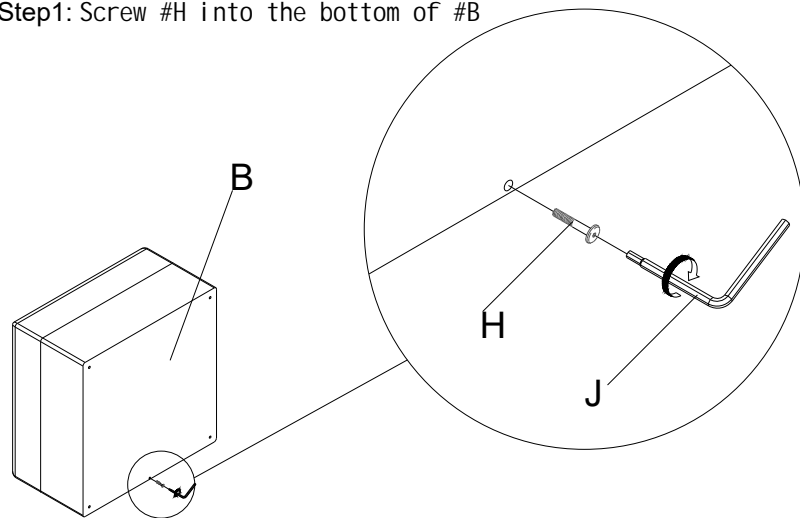


Kx2

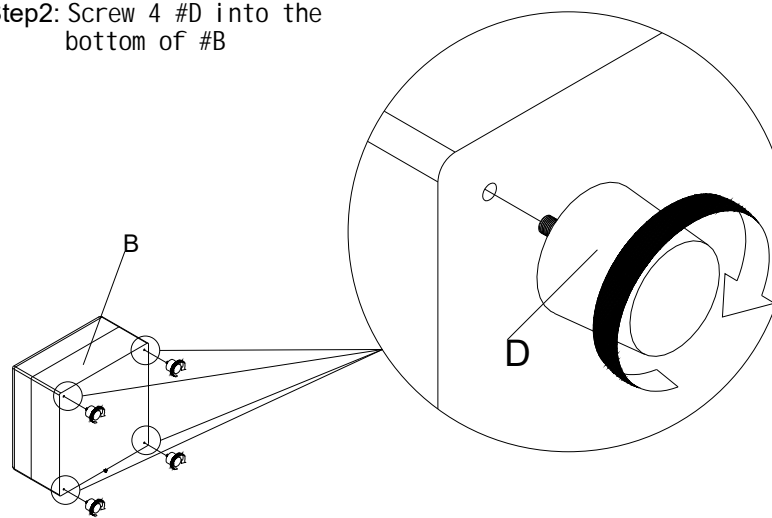
Assembly Guide

Ottoman

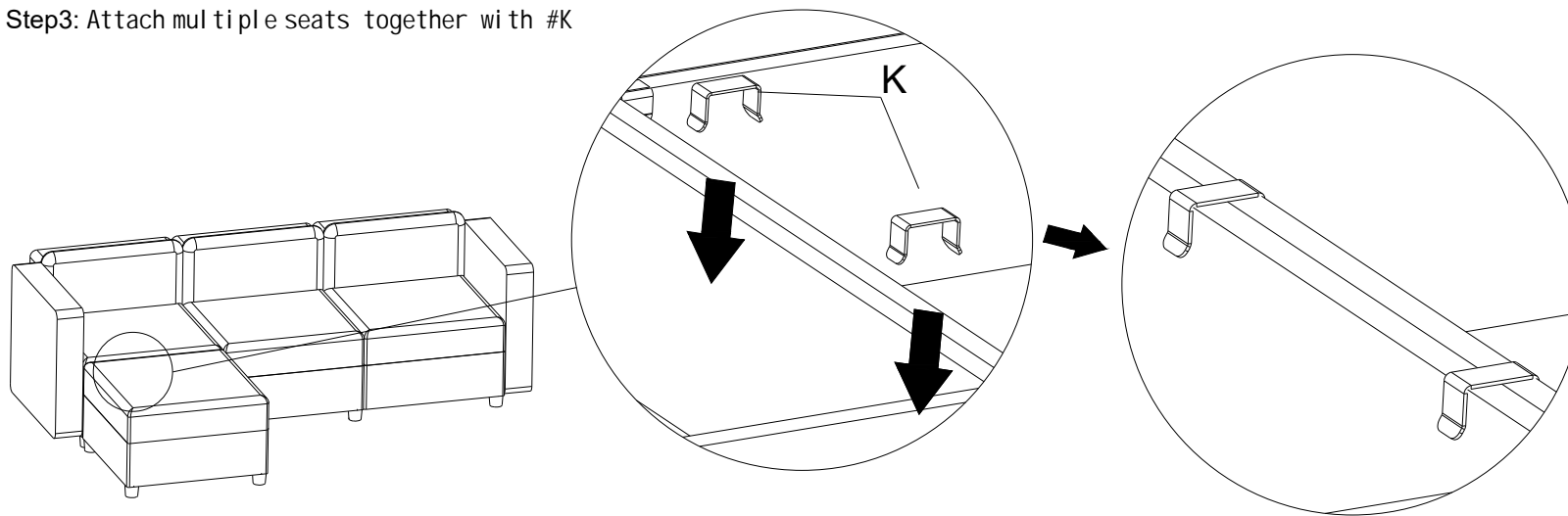
Step1: Screw #H into the bottom of #B



Step2: Screw 4 #D into the bottom of #B



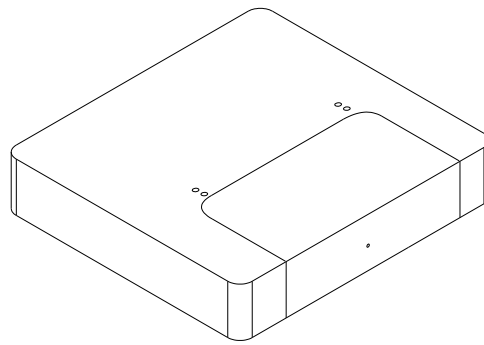
Step3: Attach multiple seats together with #K



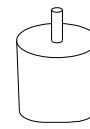
- ①Read this manual before assembly and please follow the instructions step by step
- ②Keep the manual safely for using next time

Part List

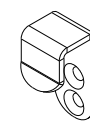
- ①Check the parts carefully
- ②Make sure everything's included before assembly
- ③Please reach out to us if you're missing any parts



Lx2



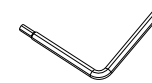
Dx2



Ex4



Gx8



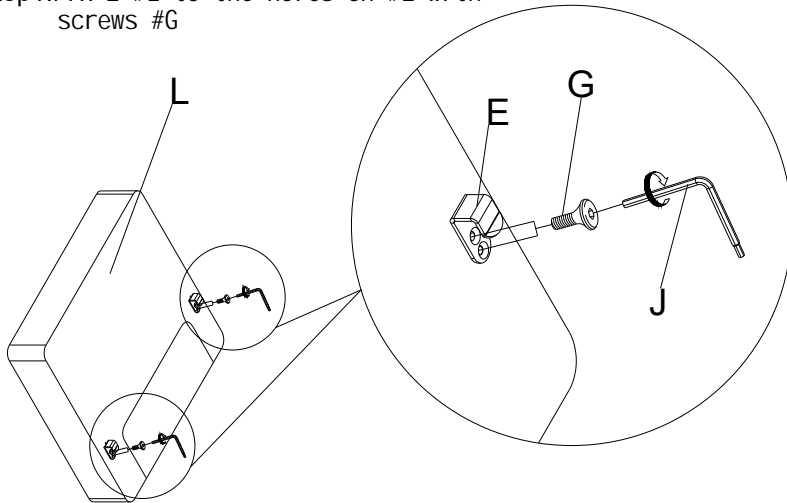
Jx1

IV

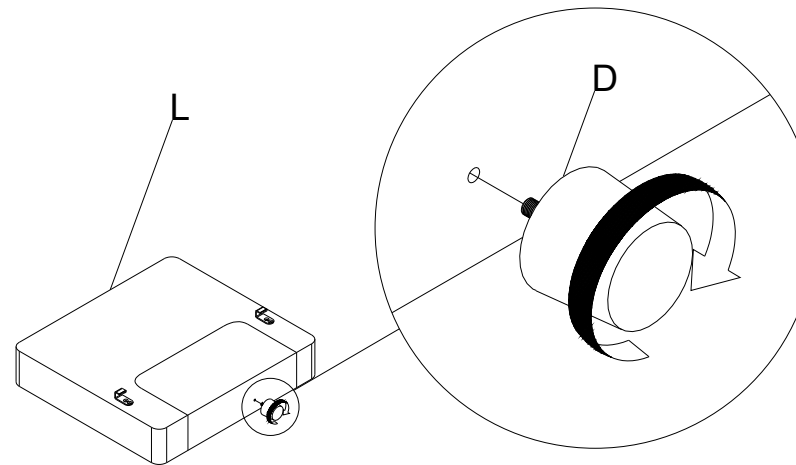
Assembly Guide

Arms

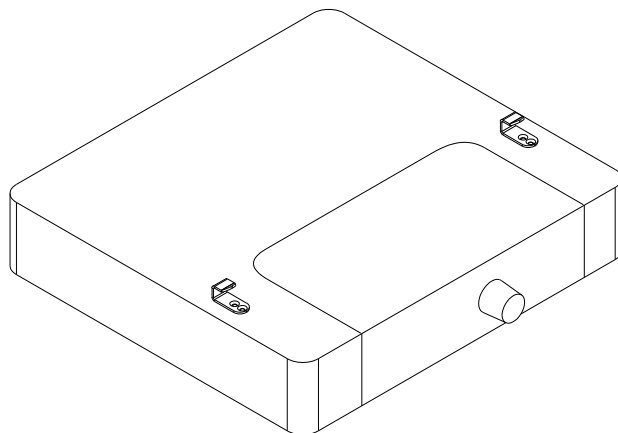
Step1: Fix 2 #E to the holes on #L with screws #G



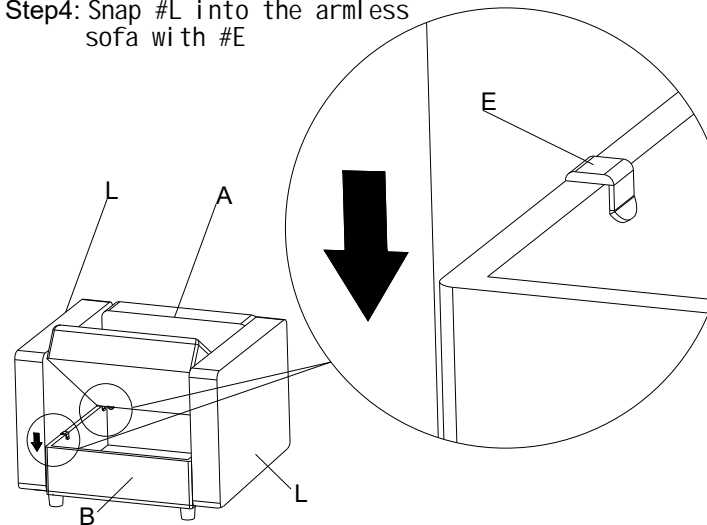
Step2: Screw #D into the hole on the bottom of #L



Step3: Assemble the other arm by the 2 steps above



Step4: Snap #L into the armless sofa with #E



- ①Read this manual before assembly and please follow the instructions step by step
- ②Keep the manual safely for using next time