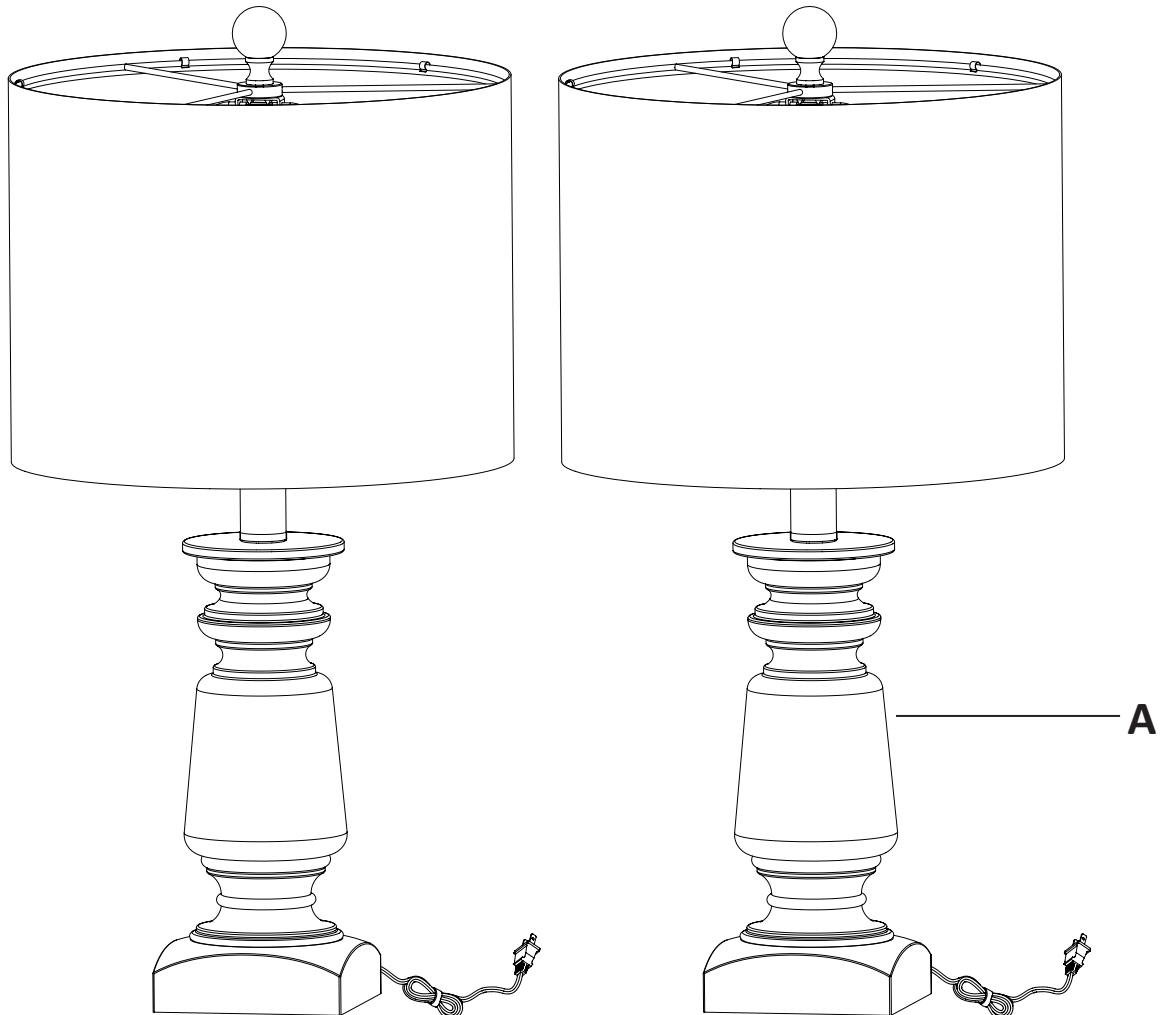


USE AND CARE MANUAL

TABLE LAMP SET OF 2
Model number: 21350



Hardware (Parts are not to scale)

H1 Finial (Pre-assembled to harp (H2)) 2 pcs		H2 Harp 2 pcs		H3 Shade panel 2 pcs	
H4 Top ring 2 pcs		H5 Bottom ring 2 pcs		H6 Socket assembly (connecting to fixture body (A)) 2 pcs	

**THIS MANUAL CONTAINS IMPORTANT SAFETY INFORMATION. PLEASE READ AND
KEEP FOR FUTURE REFERENCE.**

IMPORTANT SAFETY INFORMATION

- This lamp is for indoor use only. The lamp should not be used near water. Never immerse the lamp in water or other liquids.
 - Never cover the lamp with any object including cloth or paper as this is a fire hazard.
 - Do not handle the bulb immediately after the light is turned off as it will be hot.
 - This portable lamp has a polarized plug (one blade is wider than the other) as a safety feature to reduce the risk of electric shock. This plug will fit into a polarized outlet only one way. If the plug does not fit fully into the outlet, reverse the plug. If it still does not fit, contact a qualified electrician. Never use with an extension cord unless plug can be fully inserted. Do not alter the plug.
-

PREPARATION

- Before beginning assembly, installation or operation of product, make sure all parts are present. Compare parts with package contents list and diagram on the previous page. If any part is shown as missing or damaged, do not attempt to assemble, install or operate the product. Contact customer service for replacement parts.
-

ASSEMBLY

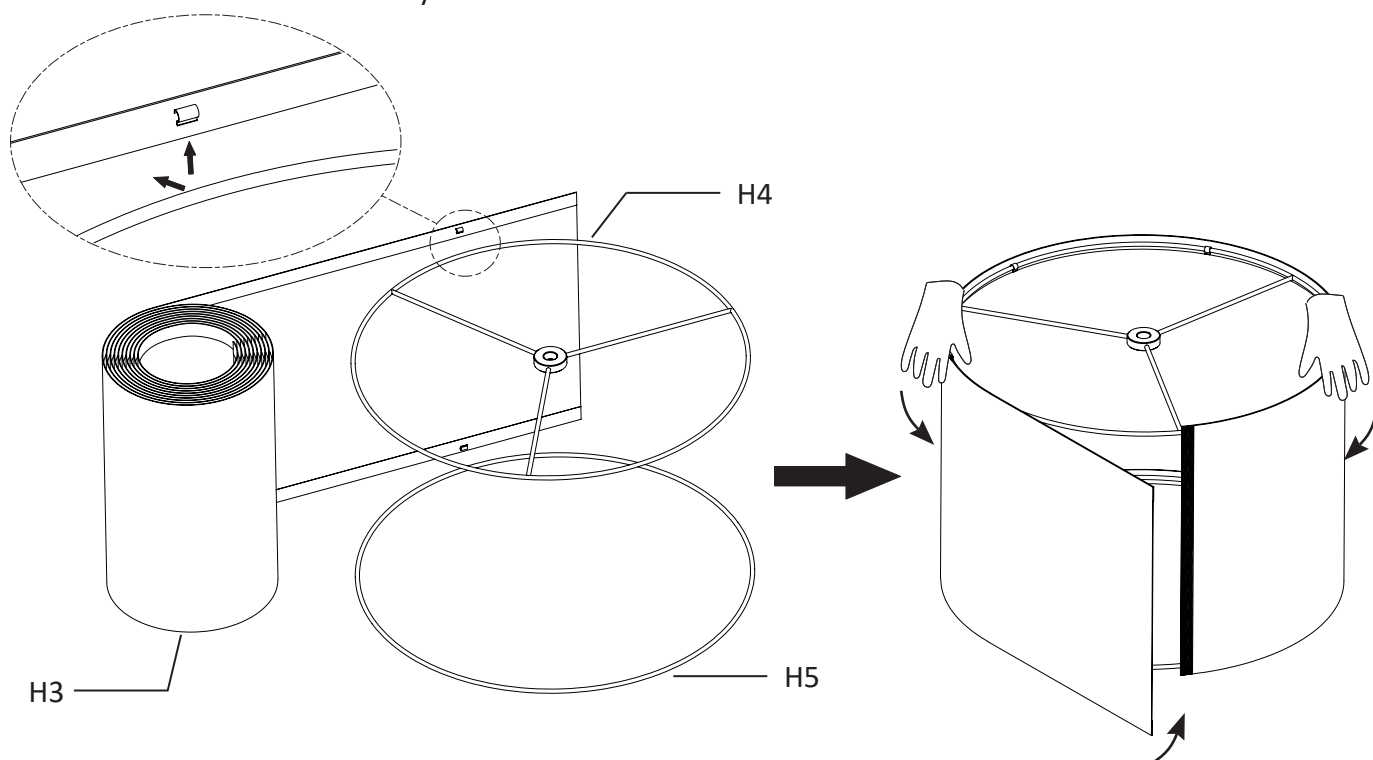
SHADE ASSEMBLY

1 Assembling the shade

- Place the shade panel (H3) and top ring (H4) and bottom ring (H5) from the box.
- Attach the top ring (H4) and the bottom ring (H5) to clips on the shade panel (H3) securely into the clips.
- Attach the shade panel (H3) together by velcro.
- Repeat this step for the second shade.

NOTE: Push and pull the shade panel (H3) to be tight before attaching it together by velcro.

The clips will not fit where the ring and the stretchers meet. The big ring of the top ring is towards the outside of the shade assembly.



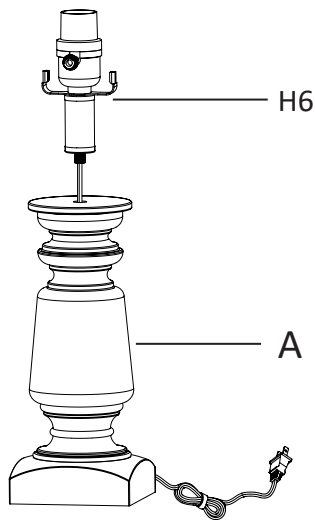
ASSEMBLY (continued)

LAMP ASSEMBLY

1 Assembling the socket assembly

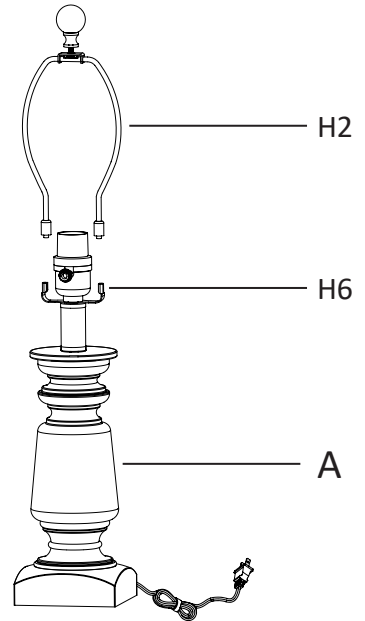
- Pull the excess power cord through the base of the fixture body (A).
- Tighten the socket assembly (H6) onto the fixture body (A) securely.

NOTE: Do not twist the power cord.



2 Installing the harp

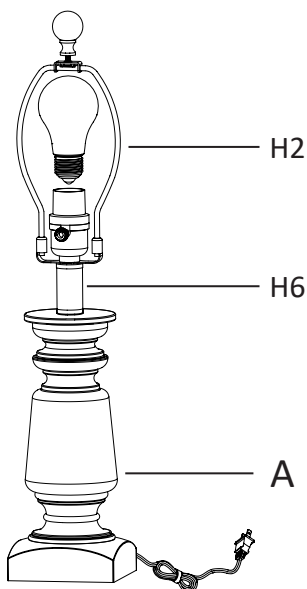
- Insert the harp (H2) prongs into the saddle of the socket assembly (H6) and slide the retaining covers over joints to secure the harp.



3 Installing the light bulb

- Install the light bulb (not provide) into the socket. Use one **MAX 60W medium base (E26) type "A"** bulb.

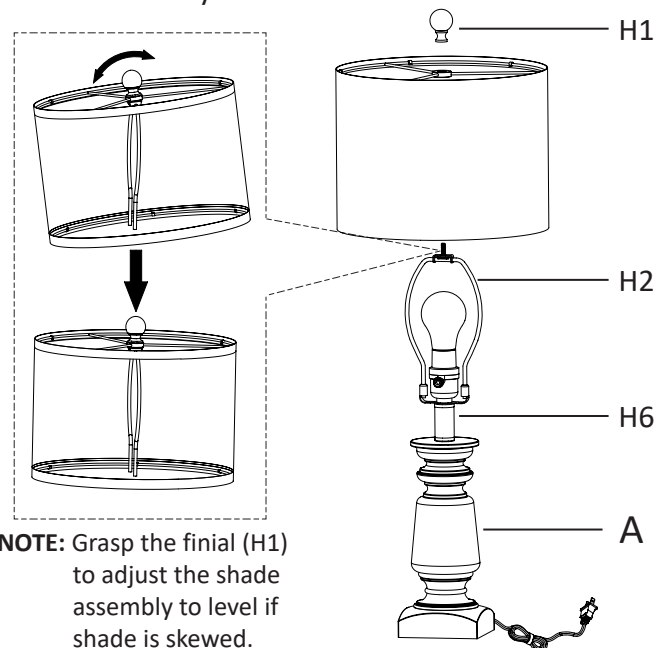
NOTE: You can also use one **MAX 10W medium base (E26) self-ballasted LED** bulb. Do not exceed the recommended wattage.



4 Installing the shade

- Unscrew the finial (H1) from the harp (H2).
- Place the shade assembly onto the harp (H2) and secure with the finial (H1).

NOTE: Grasp the finial (H1) to adjust the shade assembly to level if shade is skewed.



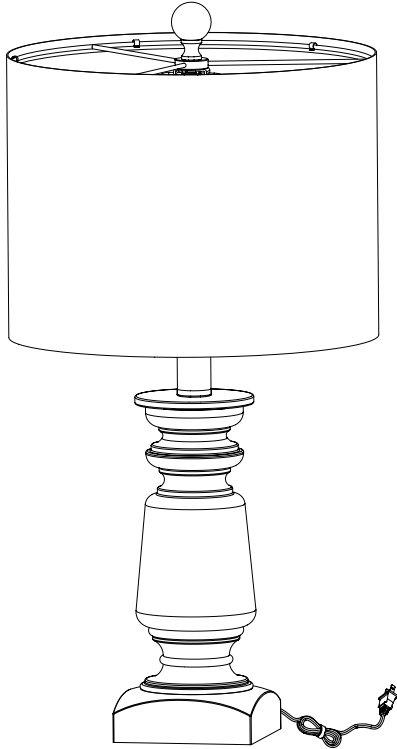
NOTE: Grasp the finial (H1) to adjust the shade assembly to level if shade is skewed.

ASSEMBLY (continued)

LAMP ASSEMBLY

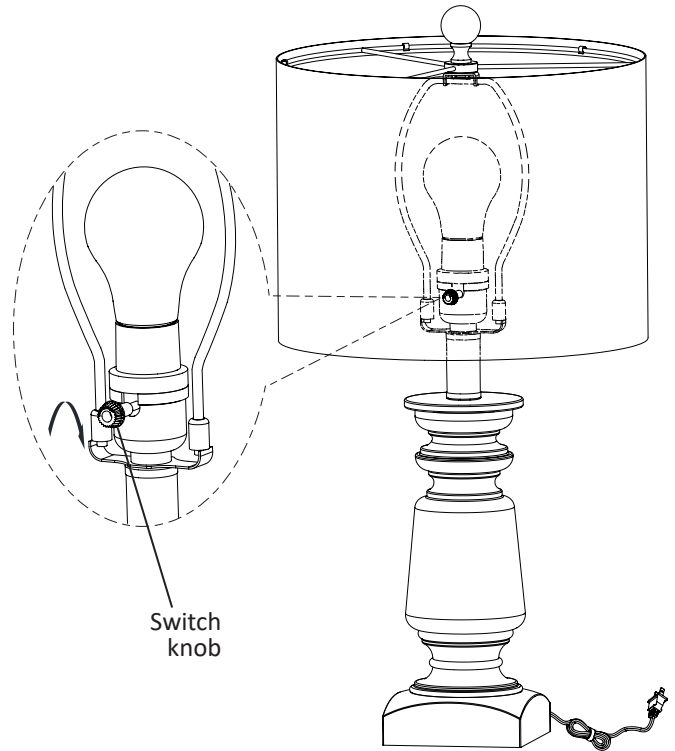
5 Assembling the second lamp

- Repeat steps 1 - 4 for the second lamp.



6 Using the table lamp

- Plug into the wall outlet, turn the switch clockwise and enjoy.



CLEANING

- Do not use any cleaners with chemicals, solvents, or harsh abrasives. Use only a dry, soft cloth to dust or wipe carefully.
- To clean the fixture, pull the plug from the wall outlet. Use a dry or slightly dampened, clean cloth to wipe the exterior surface of the fixture.

TROUBLESHOOTING

- The light does not come on at all:
 - a) Check whether the bulb was burned out.
 - b) Ensure the power supply is turned on.
 - c) Ensure the cord is plugged into an outlet.
 - d) Ensure the circuit breaker is set in the "ON" position.
- Fuse blows or circuit trips when light is turned on.
 - a) Check for crossed wires, ensure wiring is correct.