

ITEM #0663225

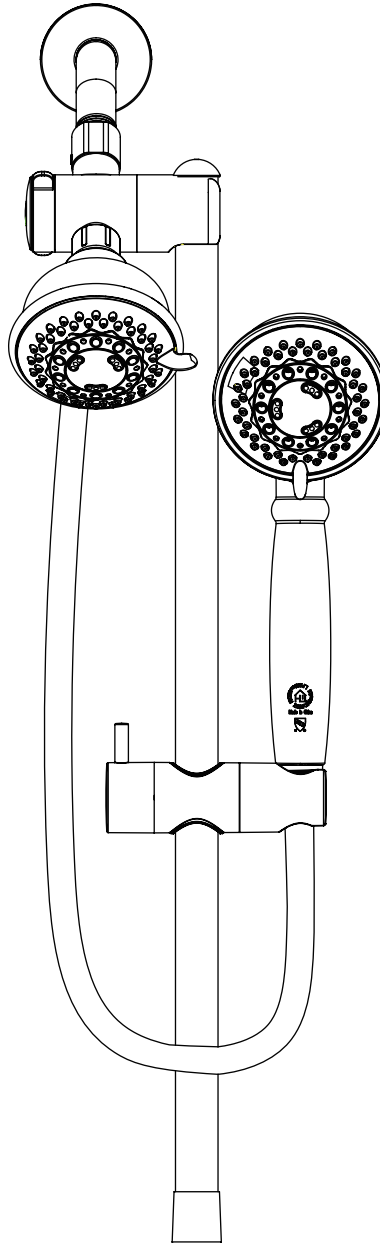
# AquaSource®

AquaSource® is a registered trademark of LF, LLC. All Rights Reserved.

## COMBINATION SHOWERHEAD WITH SLIDE BAR

MODEL #3074-152D

Français / Español p. 8



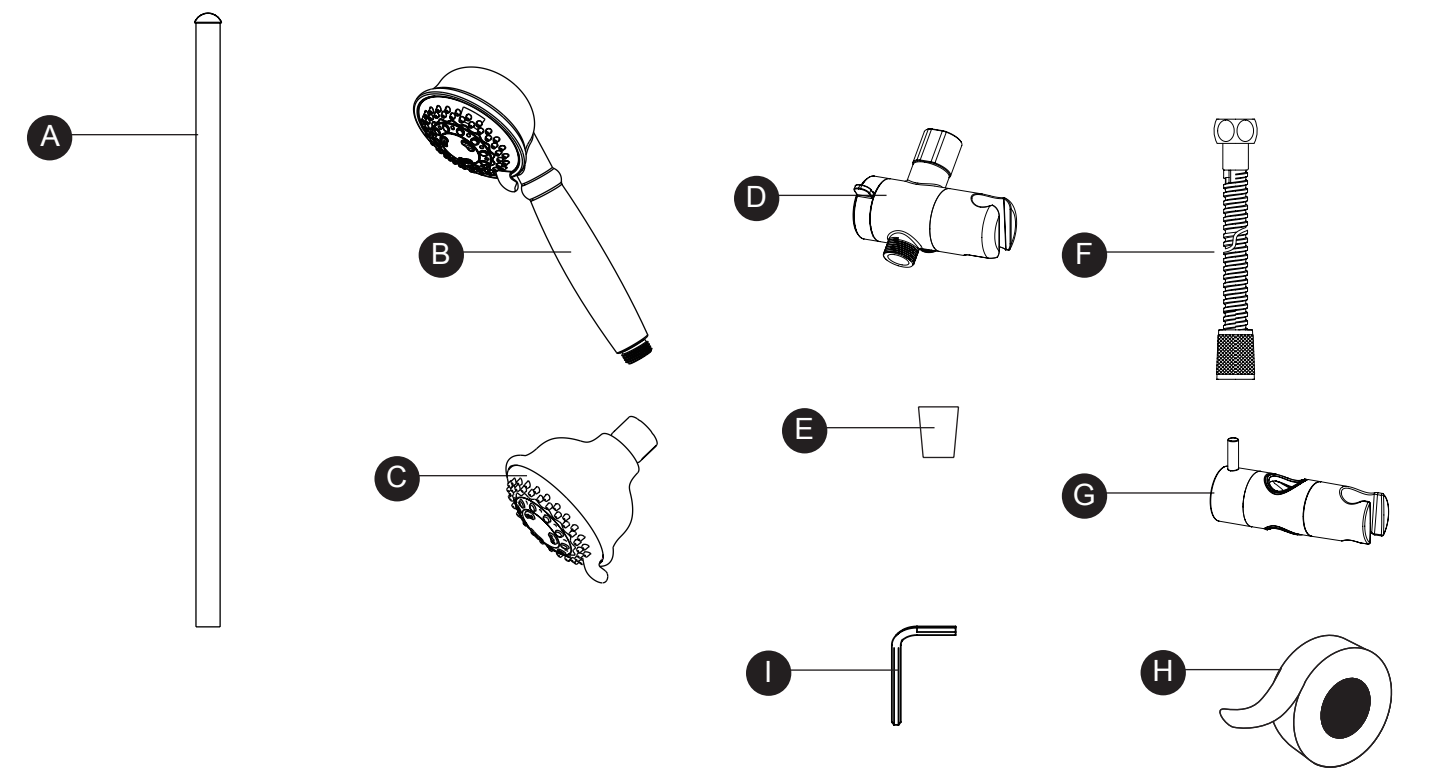
**ATTACH YOUR RECEIPT HERE**

**Serial Number** \_\_\_\_\_ **Purchase Date** \_\_\_\_\_



**Questions, problems, missing parts?** Before returning to your retailer, call our customer service department at 1-866-417-7564, 8 a.m. - 8 p.m., EST, Monday - Friday.

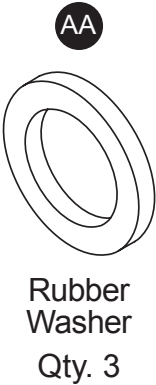
PACKAGE CONTENTS



PART	DESCRIPTION	QUANTITY
A	Slide bar	1
B	Handheld shower	1
C	Wall mount showerhead	1
D	Water diverter	1
E	Endcap	1

PART	DESCRIPTION	QUANTITY
F	Hose	1
G	Slide bracket/handheld support	1
H	Plumber's tape	1
I	Hex wrench	1

HARDWARE CONTENTS (not actual size)





## **SAFETY INFORMATION**

---

Please read and understand this entire manual before attempting to assemble, operate or install the product.

### **CAUTION**

- If you solder the joints during installation of the faucet, the seats, cartridges and washers must be removed before using a flame or the warranty will be voided on these parts.
- Cover the sink drain to avoid losing parts.

### **WARNING**

- Protect your eyes with safety glasses when cutting or soldering water supply lines.

## **PREPARATION**

---

Before beginning assembly of product, make sure all parts are present. Compare parts with package contents list and hardware contents list. If any part is missing or damaged, do not attempt to assemble the product.

### **Estimated Assembly Time: 30 minutes**

Tools Required for Assembly (not included): Adjustable Wrench, Pipe Thread Compound

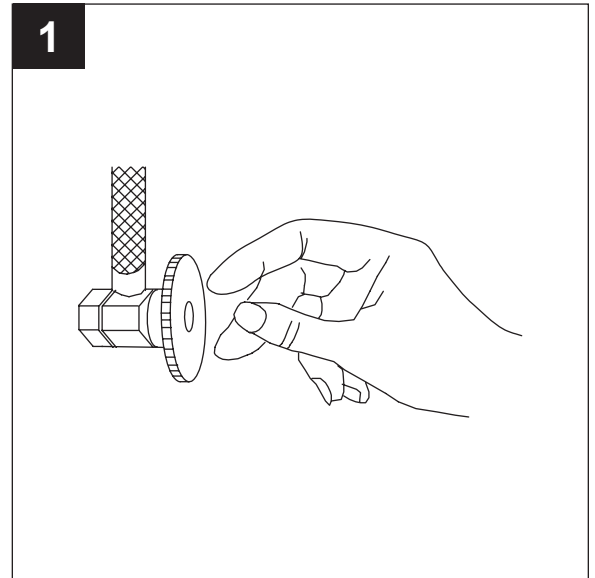
Installations may vary depending on how the previous showerhead was installed. Supplies necessary for the installation of the showerhead are not all included; however, they are available wherever plumbing supplies are sold.

Prior to beginning installation, turn off the hot or cold water lines, then turn on the old faucet or showerhead to release built-up pressure. When installing the new faucet, turn the connector nuts finger tight, then use one wrench to hold the fitting and a second wrench to tighten the nut. Connections that are too tight will reduce the integrity of the system.

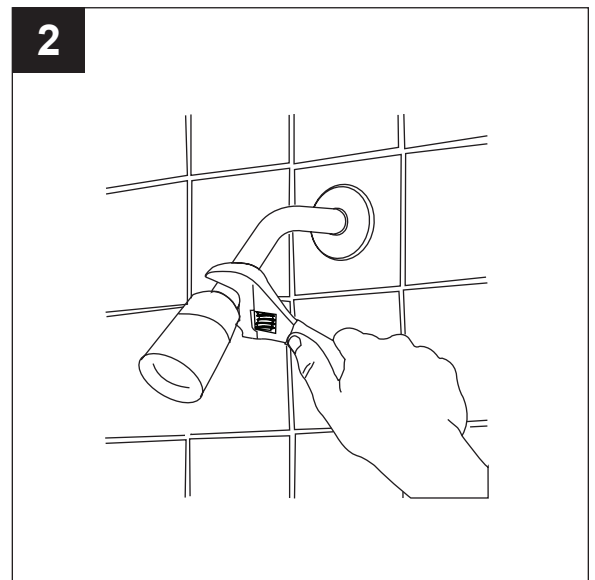
Wrap all threaded connections with PTFE pipe tape. Always wrap in a clockwise direction.

## ASSEMBLY INSTRUCTIONS

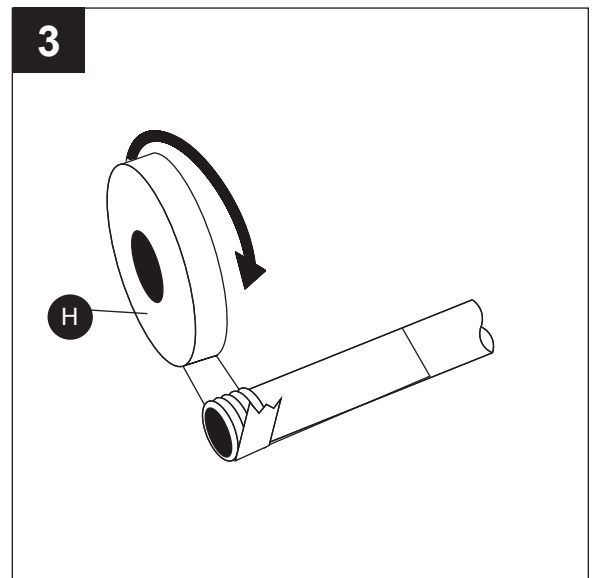
1. Turn off water at the supply valve under the sink or at the main water supply.



2. Remove existing showerhead with wrench (not included). Clean threads of shower arm.

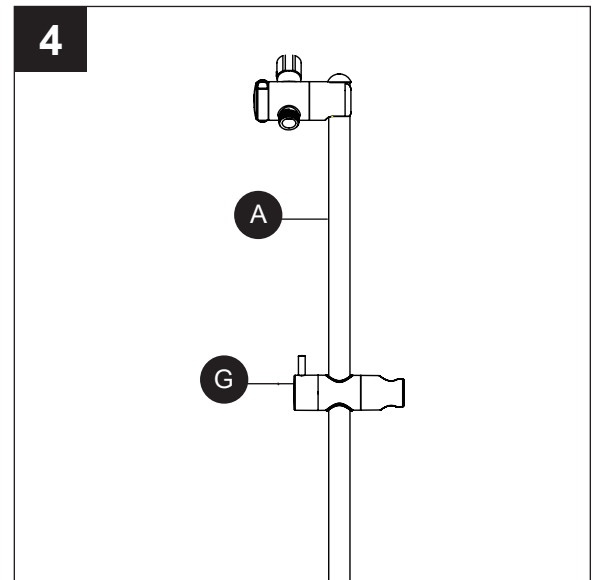


3. Cover all male threads with plumber's tape (H) wrapped clockwise or with pipe joint compound (not included).

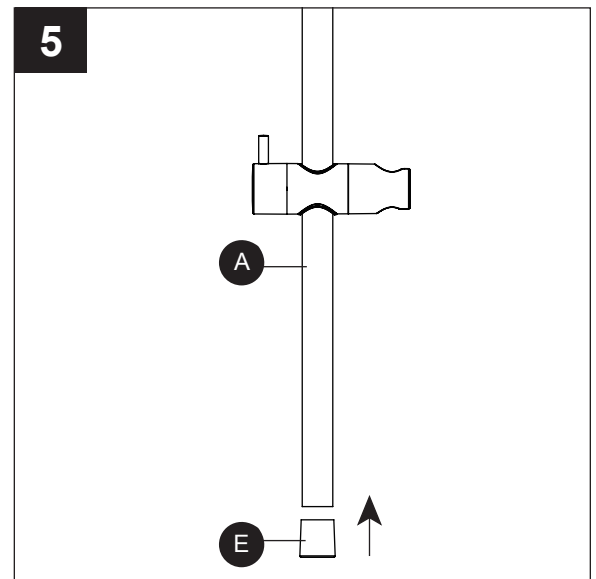


## ASSEMBLY INSTRUCTIONS

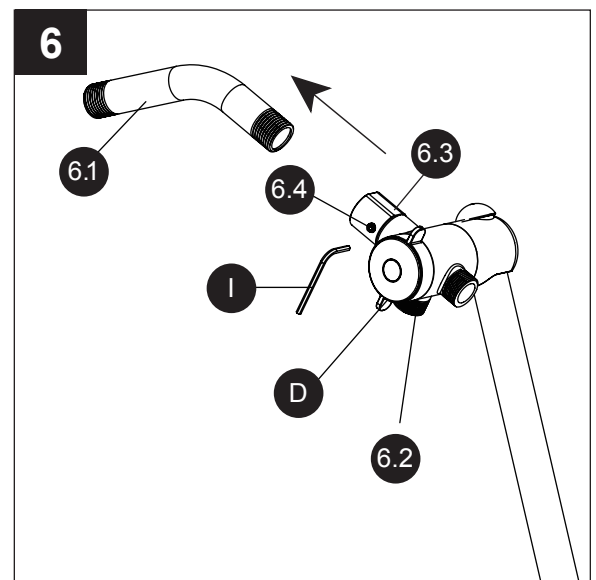
4. Unscrew knob on slide bracket/handheld support (G) and slide it up from bottom into desired position on slide bar (A). Twist knob to lock slide bracket/handheld support (G).



5. Place endcap (E) on bottom of the slide bar (A).

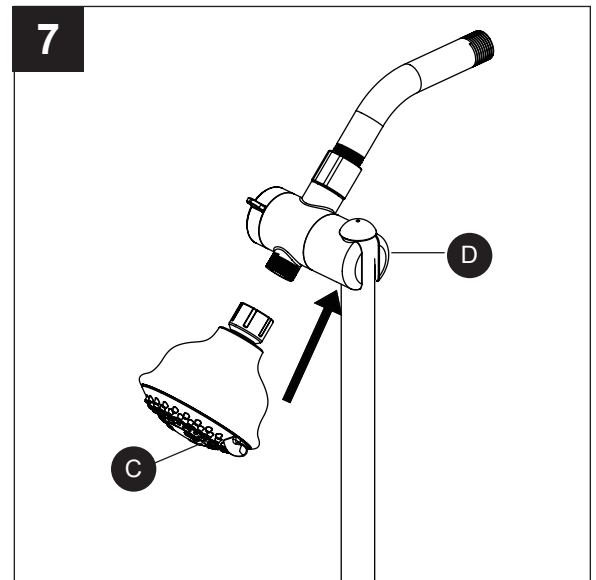


6. Screw slip nut (6.3) onto shower arm (6.1) hand tighten plus 1/4 turn, holding the water diverter with the hose outlet (6.2) facing down.  
Secure diverter locking nut to shower arm with set screw (6.4) using hex wrench (I) provided.

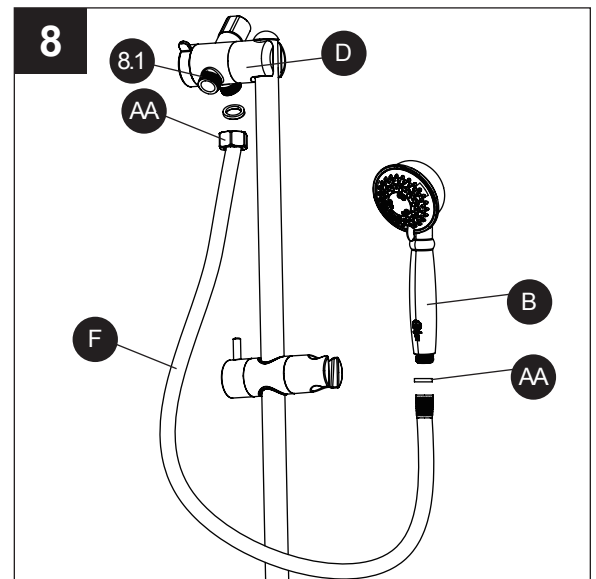


## ASSEMBLY INSTRUCTIONS

7. Screw wall mount showerhead (C) onto water diverter (D). Confirm rubber washer is inside the wall mount shower head (C) prior to installation.



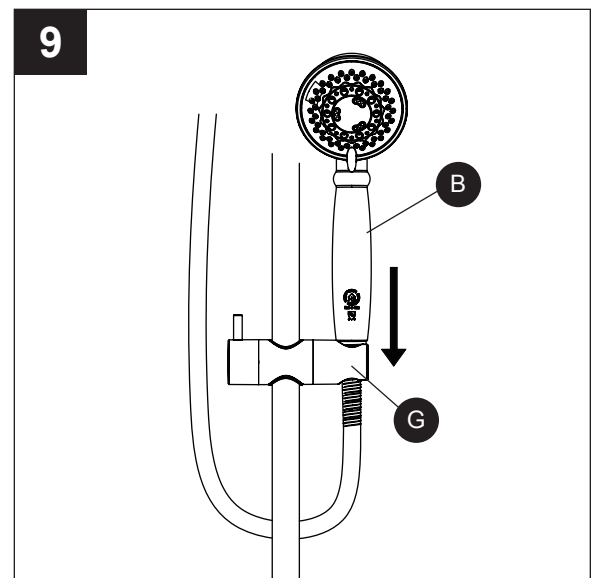
8. Screw hose (F) with hex nut end and rubber washer (AA) in place onto hose outlet (8.1) of water diverter (D). Screw hose with conical end and rubber washer (AA) in place onto handheld shower handle (B).



### Hardware Used

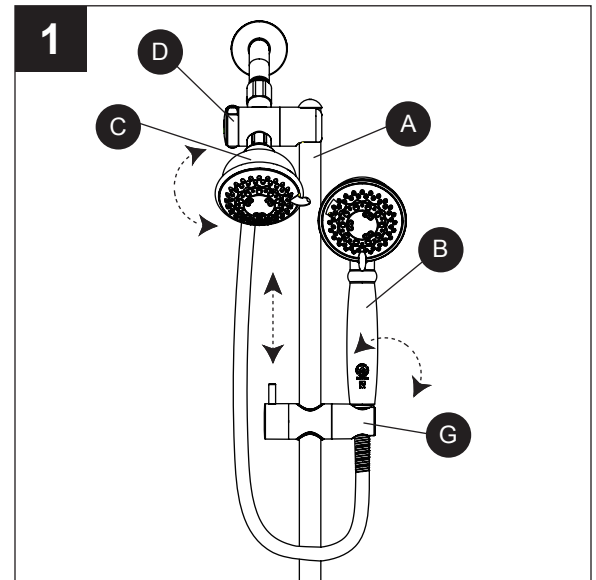
AA	Rubber Washer	x 2
----	---------------	-----

9. Place handheld shower (B) into slide bracket/handheld support (G).



## OPERATING INSTRUCTIONS

1. Turn dial lever on the wall mount showerhead (C) or handheld shower (B) to select water for each shower. Twist knob on water diverter (D) for desired flow from the wall mount showerhead (C) to handheld shower (B).  
Unscrew knob on slide bracket/handheld support (G) and hold to raise, lower or rotate handheld shower (B) on slide bar (A). Twist knob to lock slide bracket/handheld support (G) in position. Rotate slide bracket/handheld support (G) to set desired handheld shower (B) angle.



## CARE AND MAINTENANCE

Clean periodically with a soft cloth. Avoid abrasive cleaners, steel wool, and harsh chemicals as these will dull the finish and void your warranty.

## LIMITED 5-YEAR WARRANTY

The distributor warrants to the original purchaser of this product to be free from defects in material and workmanship under normal use in residential applications. At its option, the distributor will provide repair parts or replace defective product when the product is used in accordance with the manufacturer's specifications.

The distributor provides a limited 5-year warranty on the finish of this product to the original purchaser. At its option, the distributor will provide repair parts or replace defective product when the product is used in accordance with the manufacturer's specifications. Use of mild abrasive, abrasive or chemical cleaners may damage the finish of the product. We recommend cleaning your showerhead with a soft cloth, moistened with water. Damage resulting from the use of abrasive or chemical cleaners **SHALL VOID THIS WARRANTY**.

This warranty is not applicable to any products or parts of products where damage is caused by use of non-genuine parts; is due to installation error, product misuse, negligence or faulty maintenance; or where the product is not installed according to local building codes.

This warranty excludes labor charges or damage incurred during installation, repair or replacement, and any indirect, incidental or consequential damages, losses, injury or costs of any nature. This warranty is in lieu of and excludes all other warranties, conditions and guarantees, whether expressed or implied, including without restriction those of merchantability or fitness of use.

Liability under this warranty will not exceed the purchase price for the product claimed to be defective by the original consumer purchaser. Some states or provinces do not allow the exclusion or limitation of consequential damages so the above limitations or exclusions may not apply. This warranty gives you specific legal rights and you may also have other rights which vary from state to state, or province to province.

Inquiries regarding warranty claims can be directed to 1-866-417-7564, 8 a.m. - 8 p.m., EST, Monday - Friday.