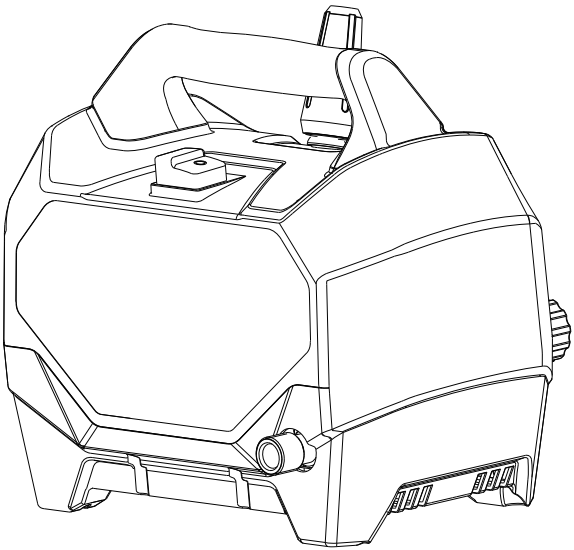
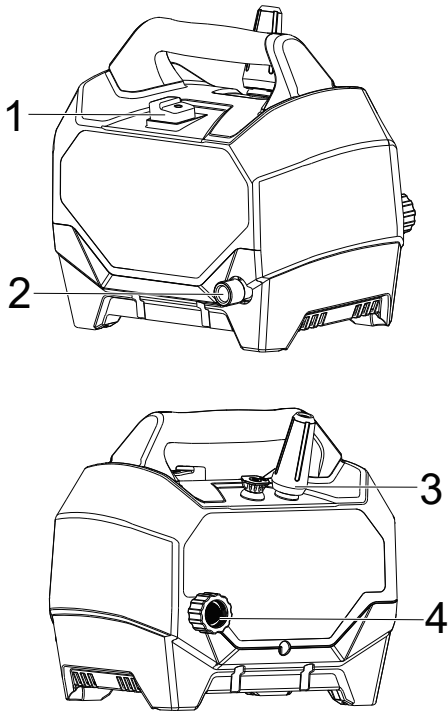


PRESSURE WASHER



Depending on the model purchased, packaging will contain different accessories and parts.
Refer to the package for more details.

KNOW YOUR MACHINE

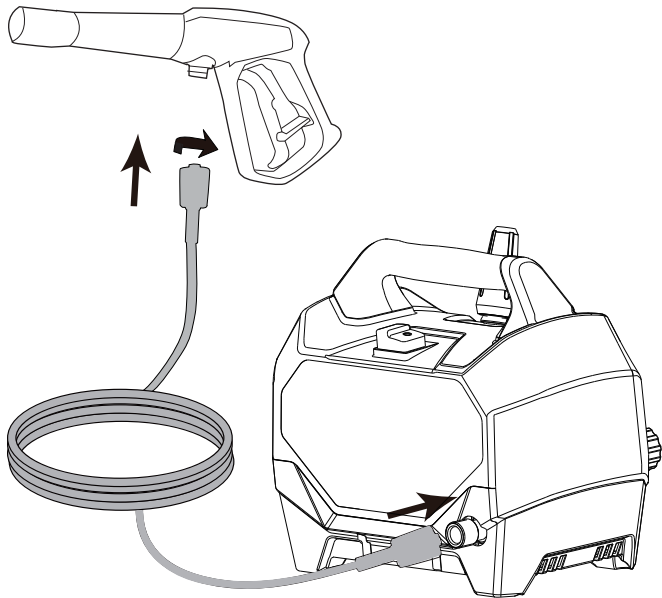


- 1 ON/OFF switch
- 2 Water outlet
- 3 Spray tip
- 4 Water inlet

1

INSTALLATION

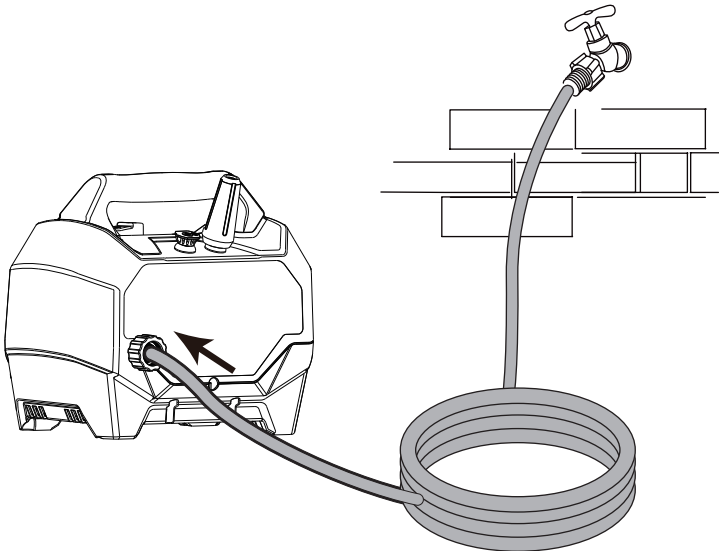
Install the high pressure hose



2

Connect the water supply to machine

NOTE: Let the water flow through the garden hose for 30 seconds.



3



Europe
www.greenworkstools.eu



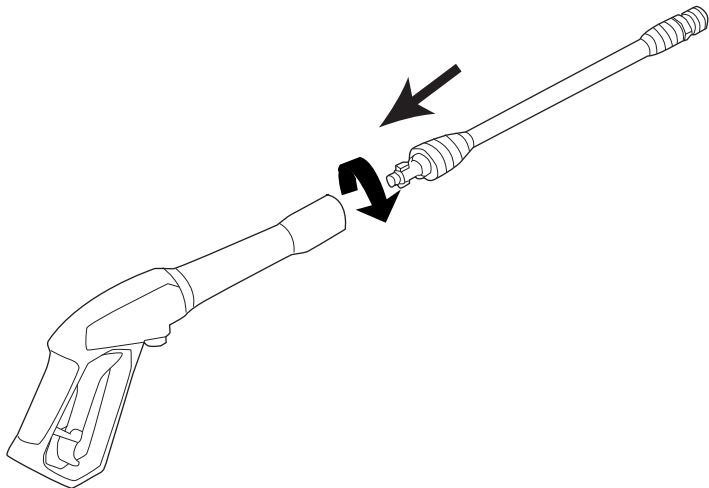
USA
www.greenworkstools.com



Canada
www.greenworkstools.ca


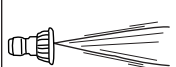




Install the spray wand

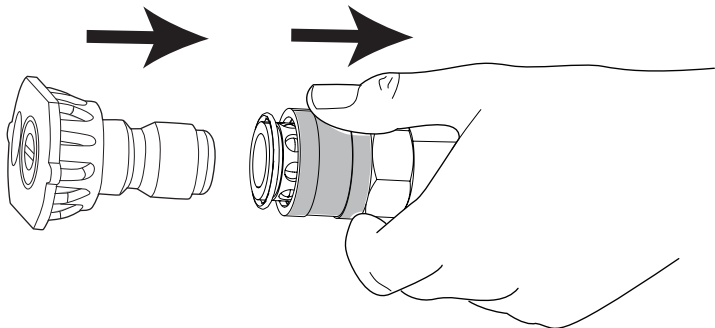


4

Spray tip or nozzle selection guide

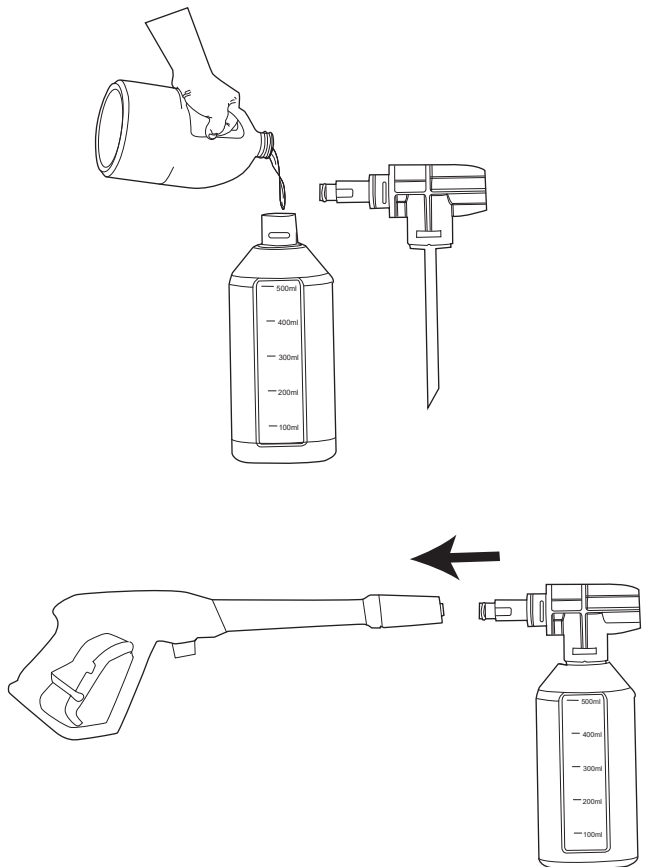
Spray tip type	Spray pattern	Uses	Surfaces*
		versatile washing, removing dirt without damage	fences, decks, wood, siding
		Powerful pinpoint for very intense cleaning.	metal, concrete, asphalt, brick, strip paint

Install the spray tip



5

Install the soap applicator

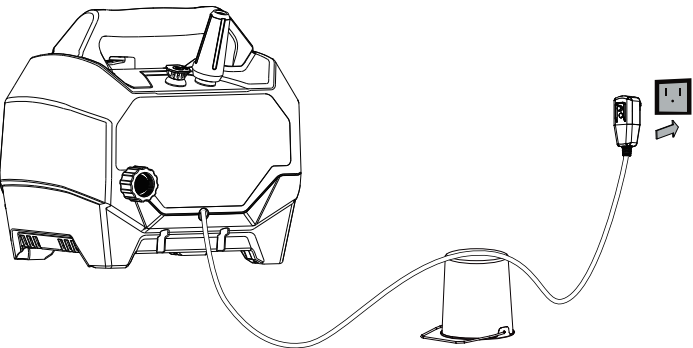


6

OPERATION

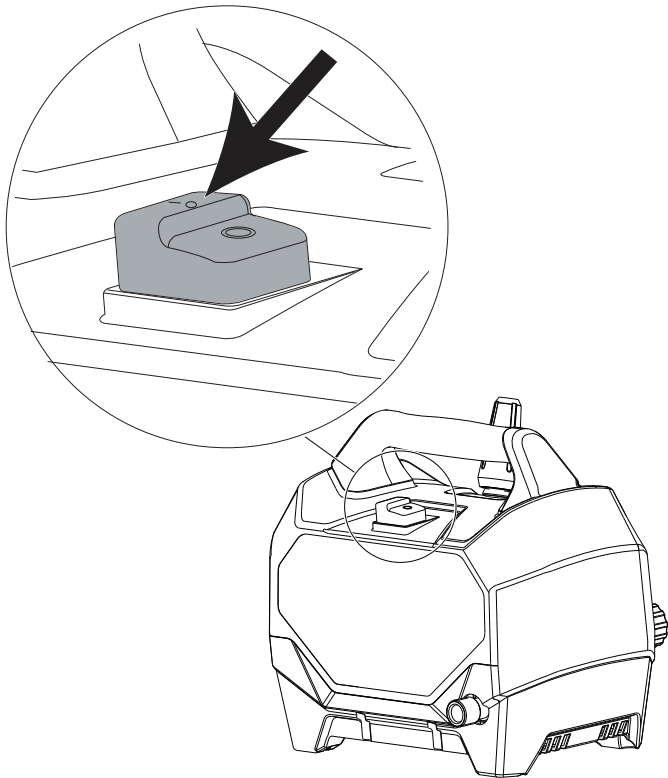
Connect the machine to power supply

7



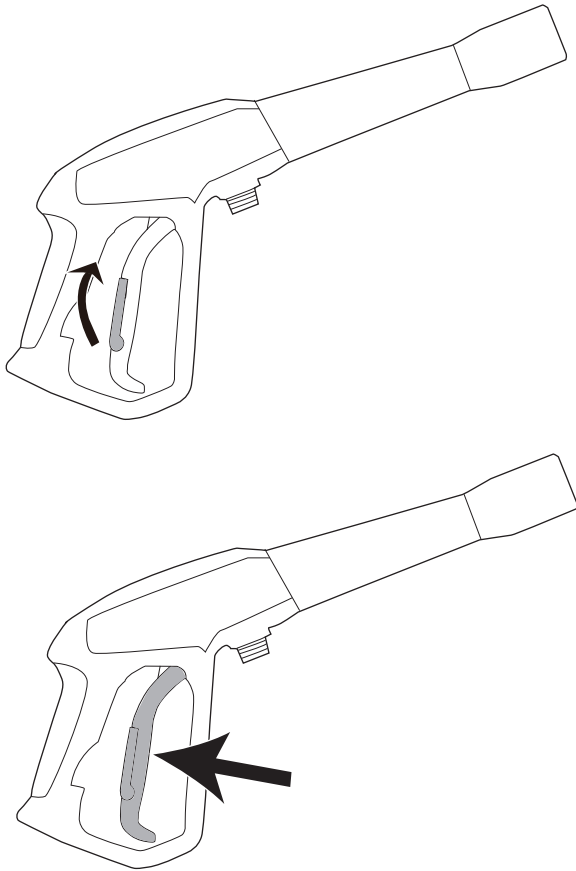
Start the machine

8



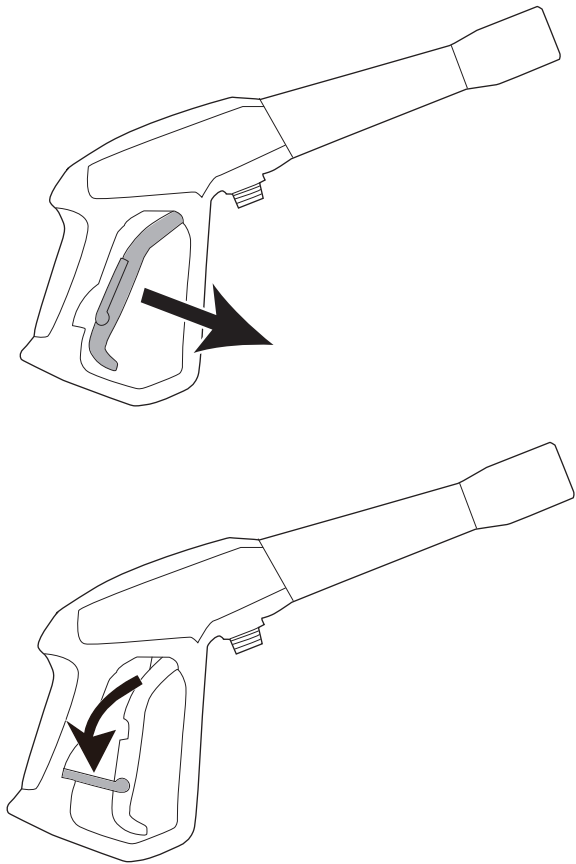
Start the spray gun

9



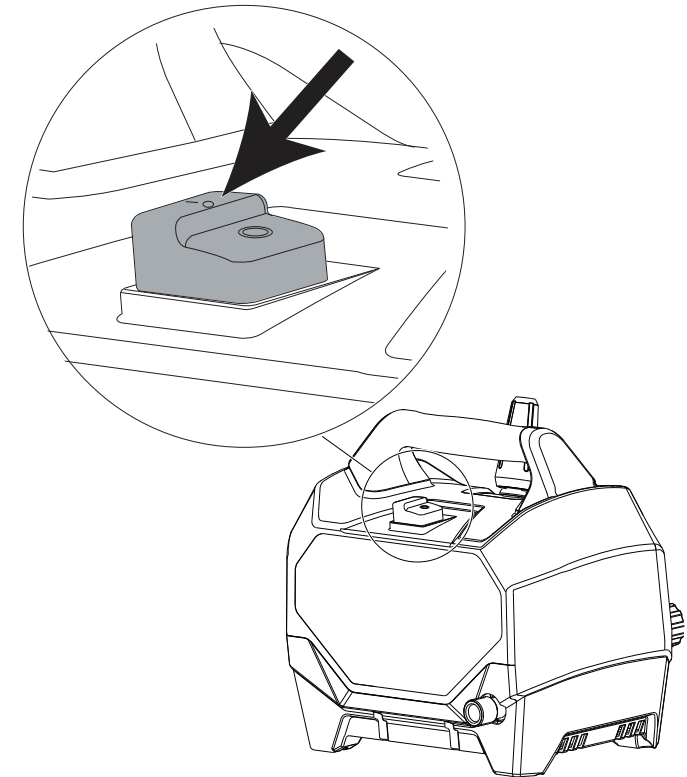
Stop the spray gun

10



Stop the machine

11

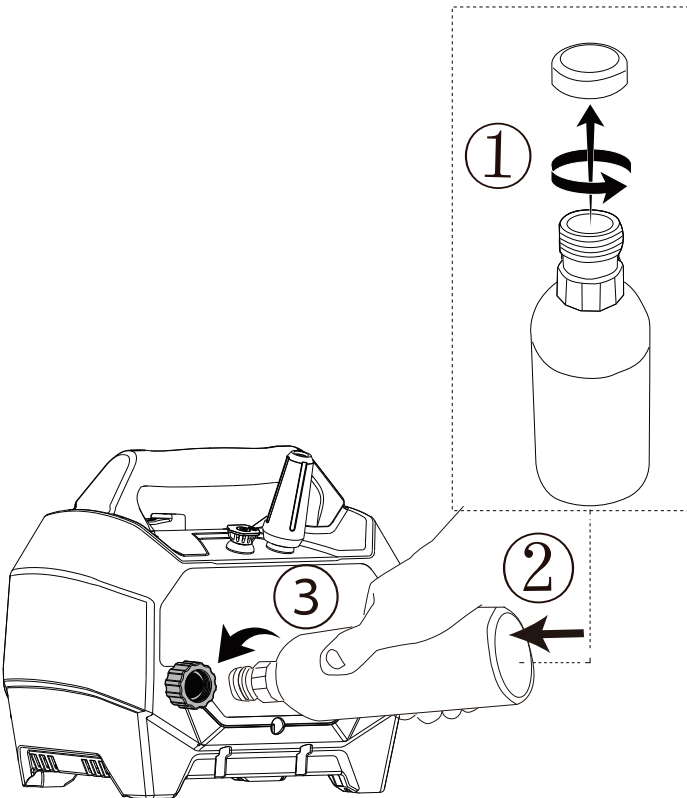


MAINTENANCE

Protect the pump

NOTE: Pump Saver protects pressure washer pumps against freezing to save cold weather storage.

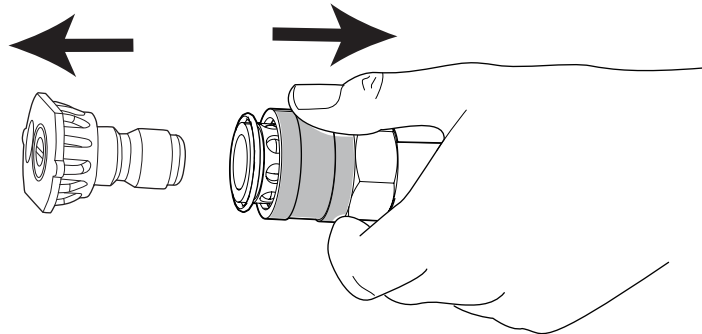
12



Remove the spray tip

NOTE: Always stop the machine before removing the spray tip.

13



Clean the spray tip

14

