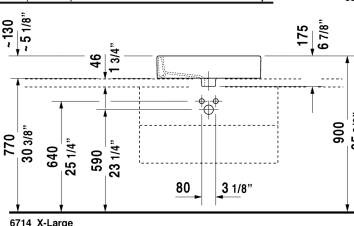
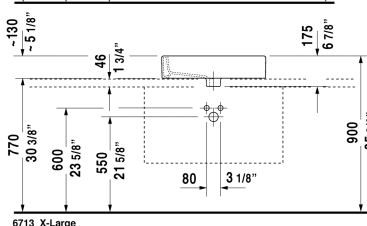
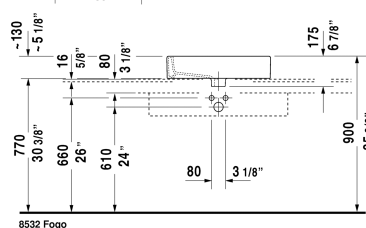
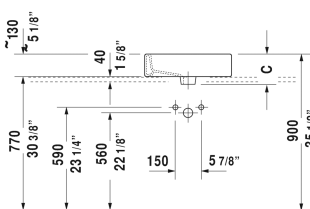
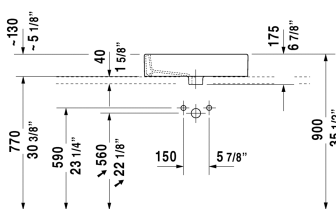
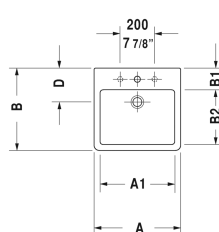
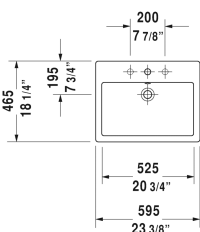


Vero Above-counter basin # 0452600000 / 0452600030

| < 23 3/8" Inch > |



Above-counter basin	Dimension	Weight	Order number
ground, with faucet deck, back side glazed, hardware included, cUPC® listed*, 23 3/8" Inch			
Colors			
00 White			
Variant			
● with overflow	23 3/8" x 18 1/4" Inch	39.5 lb	0452600000
●●● with overflow	23 3/8" x 18 1/4" Inch	39.5 lb	0452600030
Infobox			
* Complies with following standards: ASME A112.19.2/CSA B45.1, * When using this siphon please observe outlet height from upper surface of finished floor to center of outlet in accordance with the technical specification sheet, Installation with a distance to the wall is required			
Sanitary ceramics with the special WonderGliss surface finish will remain clean and attractive-looking for a long time to come. When ordering WonderGliss please add a "1" as eleventh digit to the model number.			
Design Siphon		3.3 lb	005036

Vero Above-counter basin # 0452600000 / 0452600030

|< 23 3/8" Inch >|

All drawings contain the necessary measurements which are subject to standard tolerances. They are stated in inch & mm and are non-binding. Exact measurements, in particular for customized installation scenarios, can only be taken from the finished ceramic piece.