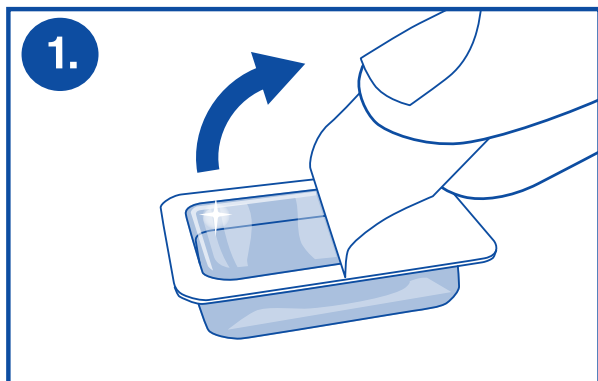
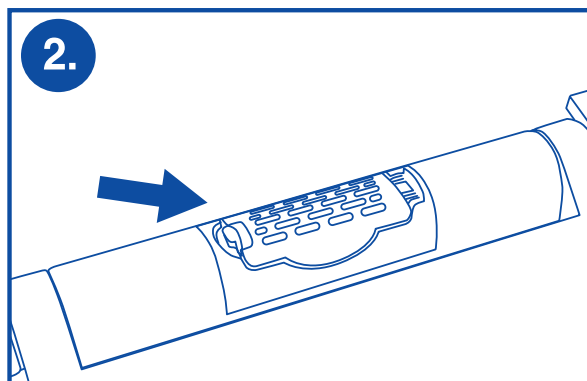


Clorox Stay Fresh™ Pods Refills

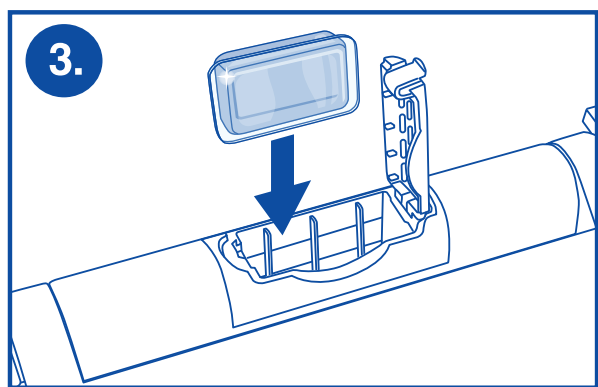
*Replace after 30 days or
when liquid has dissolved.*



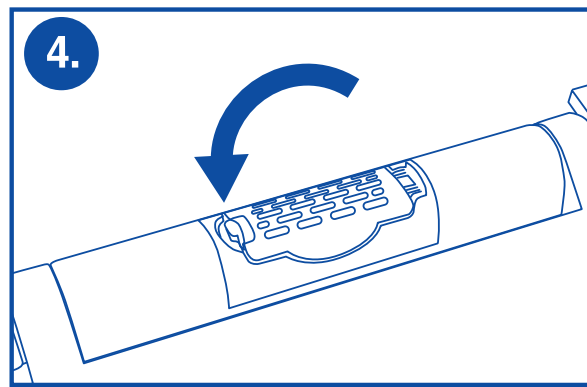
Remove foil backing from Stay Fresh™ Pod. DO NOT remove or puncture clear covering.



Locate scent housing in hinge of Stay Fresh™ Toilet Seat. Push end tab inward to open door.



Insert new Stay Fresh™ Pod with clear covering facing toilet seat.



Close housing door until end tab snaps into place.

CAUTION: EYE IRRITANT. Avoid contact with eyes. Wash hands after handling product. **KEEP OUT OF REACH OF CHILDREN AND PETS.** **FIRST AID TREATMENT:** Contains fragrance oils. If eye contact occurs, rinse with plenty of water for 20 minutes. If eye irritation persists, consult a physician. **IF SWALLOWED,** do not induce vomiting, call a physician or poison control center immediately.

This item is manufactured, marketed and distributed by Ginsey Home Solutions. The CLOROX trademarks are owned by The Clorox Company, and are used by Ginsey Home Solutions under license. Customer Service: 8:30am – 5:00pm (EST) Monday – Friday • 1-800-257-7844 • service@ginsey.com