

# Test Report

**Report No.** : 1811C60028412801

---

**Applicant** : Anker Innovations Limited

---

**Address** : Unit 56, 8th Floor, Tower 2, Admiralty Centre,  
18 Harcourt Road, Hong Kong

---

**Product Name** : Anker SOLIX E10 Power Module

---

**Report Date** : 2026-02-05

---

**Shenzhen Anbotek Compliance Laboratory Limited**




# Test Report

Report No.: 1811C60028412801

Page 2 of 23

**Applicant** : Anker Innovations Limited  
**Address** : Unit 56, 8th Floor, Tower 2, Admiralty Centre, 18 Harcourt Road, Hong Kong

**The submitted sample and sample information was/were submitted and identified by/on the behalf of the client**

**Sample Name** : Anker SOLIX E10 Power Module  
**Model No.** : A17E1  
**Trade Mark** :   
**Sample Received Date** : 2025-06-04; 2025-06-30; 2025-07-17; 2025-07-30; 2025-10-23  
**Testing Period** : 2025-06-04~2025-08-01; 2025-10-23~2025-11-07

**Executive Summary:**

Test Request	Conclusion
<b>California Proposition 65 Settlements:</b>	
- Total Lead content	PASS
- Total Cadmium content	PASS
- Phthalates content	PASS

**Test Result(s):** Please refer to the following page(s).

Edited by Lindy.chan      Reviewed by Rosy Zhao      Authorized Signatory Joe Zheng

# Test Report

Report No.: 1811C60028412801

Page 3 of 23

**Sample/Part Description:**

- 1# Black plastic socket + black plastic handle + black translucent plastic sheet mixed
- 2# Silvery metal screw + silvery metal washer + silvery metal washer mixed
- 3# Black plastic button + black plastic shell + black plastic button mixed
- 4# Black plastic knob + black plastic plug + black plastic socket mixed
- 5# Silvery metal screw + silvery metal washer + silvery metal screw mixed
- 6# Black plastic contact pin + black plastic socket mixed
- 7# Black rubber stopper + black rubber foot pad + black rubber sheet mixed
- 8# Black plastic sheet + black plastic sheet mixed
- 9# Grey coating + grey coating mixed
- 10 Silvery metal screw
- 11# Grey plastic block + black plastic tie + black plastic sheet mixed
- 12# Black plastic scarfskin + black plastic lock ring + black plastic plug mixed
- 13# Black plastic wire sleeve + black plastic scarfskin + black plastic lock ring mixed
- 14 White translucent rubber ring
- 15# White plastic block + white plastic plug mixed
- 16# Silvery metal contact plate + silvery metal electrical contact + silvery metal plug mixed
- 17# Silvery metal screw + silvery metal ring + silvery metal washer mixed
- 18# Black rubber block + black rubber foot pad mixed
- 19# Silvery metal screw + silvery metal nut + silvery metal block mixed
- 20 Transparent plastic block
- 21# Silvery metal substrate + silvery metal substrate mixed
- 22 Grey coating
- 23# Silvery metal screw + silvery metal screw mixed
- 24# Black plastic shell + black plastic socket mixed
- 25 Silvery metal contact pin
- 26# Black plastic socket + black plastic socket + grey plastic socket mixed
- 27 Silvery metal stud

# Test Report

Report No.: 1811C60028412801

Page 4 of 23

**Test Result(s):**

◆ **Total Lead content**

With reference to California proposition 65 settlements, method(s) US EPA 3052:1996, US EPA 3050B:1996 were used and total Lead content was determined by ICP-OES.

**Lead content in paints and surface-coating materials:**

Tested Item	Result Unit (mg/kg)		MDL Unit (mg/kg)	Reference Limit Unit (mg/kg)
	9#	22		
Total Lead (Pb)	20	N.D.	2	90

**Lead content in other materials:**

Tested Item	Result Unit (mg/kg)			MDL Unit (mg/kg)	Reference Limit Unit (mg/kg)
	1#	2#	3#		
Total Lead (Pb)	N.D.	N.D.	N.D.	2	100

Tested Item	Result Unit (mg/kg)			MDL Unit (mg/kg)	Reference Limit Unit (mg/kg)
	4#	5#	6#		
Total Lead (Pb)	N.D.	N.D.	N.D.	2	100

Tested Item	Result Unit (mg/kg)			MDL Unit (mg/kg)	Reference Limit Unit (mg/kg)
	7#	8#	10		
Total Lead (Pb)	N.D.	N.D.	N.D.	2	100

Tested Item	Result Unit (mg/kg)			MDL Unit (mg/kg)	Reference Limit Unit (mg/kg)
	11#	12#	13#		
Total Lead (Pb)	N.D.	N.D.	N.D.	2	100

# Test Report

Report No.: 1811C60028412801

Page 5 of 23

Tested Item	Result Unit (mg/kg)			MDL Unit (mg/kg)	Reference Limit Unit (mg/kg)
	14	15#	16#		
Total Lead (Pb)	N.D.	N.D.	77	2	100

Tested Item	Result Unit (mg/kg)			MDL Unit (mg/kg)	Reference Limit Unit (mg/kg)
	17#	18#	19#		
Total Lead (Pb)	N.D.	10	66	2	100

Tested Item	Result Unit (mg/kg)			MDL Unit (mg/kg)	Reference Limit Unit (mg/kg)
	20	21#	23#		
Total Lead (Pb)	N.D.	61	N.D.	2	100

Tested Item	Result Unit (mg/kg)			MDL Unit (mg/kg)	Reference Limit Unit (mg/kg)
	24#	25	26#		
Total Lead (Pb)	N.D.	18	N.D.	2	100

Tested Item	Result Unit (mg/kg)	MDL Unit (mg/kg)	Reference Limit Unit (mg/kg)
	27		
Total Lead (Pb)	51	2	100

# Test Report

Report No.: 1811C60028412801

Page 6 of 23

◆ **Total Cadmium content**

With reference to California proposition 65 settlements, methods US EPA 3052:1996, US EPA 3050B:1996 were used and Total Cadmium(Cd) content was determined by ICP-OES.

Tested Item	Result Unit (mg/kg)			MDL Unit (mg/kg)	Reference Limit Unit (mg/kg)
	1#	2#	3#		
Total Cadmium(Cd)	N.D.	N.D.	N.D.	2	300

Tested Item	Result Unit (mg/kg)			MDL Unit (mg/kg)	Reference Limit Unit (mg/kg)
	4#	5#	6#		
Total Cadmium(Cd)	N.D.	N.D.	N.D.	2	300

Tested Item	Result Unit (mg/kg)			MDL Unit (mg/kg)	Reference Limit Unit (mg/kg)
	7#	8#	9#		
Total Cadmium(Cd)	N.D.	N.D.	N.D.	2	300

Tested Item	Result Unit (mg/kg)			MDL Unit (mg/kg)	Reference Limit Unit (mg/kg)
	10	11#	12#		
Total Cadmium(Cd)	N.D.	N.D.	N.D.	2	300

Tested Item	Result Unit (mg/kg)			MDL Unit (mg/kg)	Reference Limit Unit (mg/kg)
	13#	14	15#		
Total Cadmium(Cd)	N.D.	N.D.	N.D.	2	300

# Test Report

Report No.: 1811C60028412801

Page 7 of 23

Tested Item	Result Unit (mg/kg)			MDL Unit (mg/kg)	Reference Limit Unit (mg/kg)
	16#	17#	18#		
Total Cadmium(Cd)	N.D.	N.D.	N.D.	2	300

Tested Item	Result Unit (mg/kg)			MDL Unit (mg/kg)	Reference Limit Unit (mg/kg)
	19#	20	21#		
Total Cadmium(Cd)	N.D.	N.D.	3	2	300

Tested Item	Result Unit (mg/kg)			MDL Unit (mg/kg)	Reference Limit Unit (mg/kg)
	22	23#	24#		
Total Cadmium(Cd)	N.D.	N.D.	N.D.	2	300

Tested Item	Result Unit (mg/kg)			MDL Unit (mg/kg)	Reference Limit Unit (mg/kg)
	25	26#	27		
Total Cadmium(Cd)	N.D.	N.D.	N.D.	2	300

# Test Report

Report No.: 1811C60028412801

Page 8 of 23

◆ **Phthalates content**

With reference to California Proposition 65 settlements, method CPSC-CH-C1001-09.4 was used and phthalates were determined by gas chromatograph with mass spectrometer (GC-MS).

Tested Item(s)	Result %			MDL %	Reference limit %
	1#	3#	4#		
<b>Phthalates</b>					
Di-2-ethylhexyl Phthalate (DEHP)	N.D.	N.D.	N.D.	0.0050	0.1
Dibutyl Phthalate (DBP)	N.D.	N.D.	N.D.	0.0050	0.1
Benzylbutyl Phthalate (BBP)	N.D.	N.D.	N.D.	0.0050	0.1
Diisononyl Phthalate (DINP)	N.D.	N.D.	N.D.	0.0050	0.1
Diisodecyl Phthalate (DIDP)	N.D.	N.D.	N.D.	0.0050	0.1
Di-n-hexyl Phthalate (DnHP)	N.D.	N.D.	N.D.	0.0050	0.1

Tested Item(s)	Result %			MDL %	Reference limit %
	6#	7#	8#		
<b>Phthalates</b>					
Di-2-ethylhexyl Phthalate (DEHP)	N.D.	N.D.	N.D.	0.0050	0.1
Dibutyl Phthalate (DBP)	N.D.	N.D.	N.D.	0.0050	0.1
Benzylbutyl Phthalate (BBP)	N.D.	N.D.	N.D.	0.0050	0.1
Diisononyl Phthalate (DINP)	N.D.	N.D.	N.D.	0.0050	0.1
Diisodecyl Phthalate (DIDP)	N.D.	N.D.	N.D.	0.0050	0.1
Di-n-hexyl Phthalate (DnHP)	N.D.	N.D.	N.D.	0.0050	0.1

Tested Item(s)	Result %			MDL %	Reference limit %
	9#	11#	12#		
<b>Phthalates</b>					
Di-2-ethylhexyl Phthalate (DEHP)	N.D.	N.D.	N.D.	0.0050	0.1
Dibutyl Phthalate (DBP)	N.D.	N.D.	N.D.	0.0050	0.1
Benzylbutyl Phthalate (BBP)	N.D.	N.D.	N.D.	0.0050	0.1
Diisononyl Phthalate (DINP)	N.D.	N.D.	N.D.	0.0050	0.1

# Test Report

Report No.: 1811C60028412801

Page 9 of 23

Tested Item(s)	Result %			MDL %	Reference limit %
	9#	11#	12#		
<b>Phthalates</b>					
Diisodecyl Phthalate (DIDP)	N.D.	N.D.	N.D.	0.0050	0.1
Di-n-hexyl Phthalate (DnHP)	N.D.	N.D.	N.D.	0.0050	0.1

Tested Item(s)	Result %			MDL %	Reference limit %
	13#	14#	15#		
<b>Phthalates</b>					
Di-2-ethylhexyl Phthalate (DEHP)	N.D.	N.D.	N.D.	0.0050	0.1
Dibutyl Phthalate (DBP)	N.D.	N.D.	N.D.	0.0050	0.1
Benzylbutyl Phthalate (BBP)	N.D.	N.D.	N.D.	0.0050	0.1
Diisononyl Phthalate (DINP)	N.D.	N.D.	N.D.	0.0050	0.1
Diisodecyl Phthalate (DIDP)	N.D.	N.D.	N.D.	0.0050	0.1
Di-n-hexyl Phthalate (DnHP)	N.D.	N.D.	N.D.	0.0050	0.1

Tested Item(s)	Result %			MDL %	Reference limit %
	18#	20	22		
<b>Phthalates</b>					
Di-2-ethylhexyl Phthalate (DEHP)	0.0118	N.D.	N.D.	0.0050	0.1
Dibutyl Phthalate (DBP)	N.D.	N.D.	N.D.	0.0050	0.1
Benzylbutyl Phthalate (BBP)	N.D.	N.D.	N.D.	0.0050	0.1
Diisononyl Phthalate (DINP)	N.D.	N.D.	N.D.	0.0050	0.1
Diisodecyl Phthalate (DIDP)	N.D.	N.D.	N.D.	0.0050	0.1
Di-n-hexyl Phthalate (DnHP)	N.D.	N.D.	N.D.	0.0050	0.1

Tested Item(s)	Result %		MDL %	Reference limit %
	24#	26#		
<b>Phthalates</b>				
Di-2-ethylhexyl Phthalate (DEHP)	N.D.	N.D.	0.0050	0.1
Dibutyl Phthalate (DBP)	N.D.	N.D.	0.0050	0.1

# Test Report

Report No.: 1811C60028412801

Page 10 of 23

Tested Item(s)	Result %		MDL %	Reference limit %
	24#	26#		
<b>Phthalates</b>				
Benzylbutyl Phthalate (BBP)	N.D.	N.D.	0.0050	0.1
Diisononyl Phthalate (DINP)	N.D.	N.D.	0.0050	0.1
Diisodecyl Phthalate (DIDP)	N.D.	N.D.	0.0050	0.1
Di-n-hexyl Phthalate (DnHP)	N.D.	N.D.	0.0050	0.1

**Note:**

-MDL = Method Detection Limit

-N.D. = Not Detected (<MDL)

-mg/kg = ppm = parts per million

-%= Percentage by weight

-#-As specified by client, the test was conducted by mixing several samples together. The result(s) shown on this report may be different from the content of any homogeneous material.

- As specified by the client, all the results in this report were quoted from report 1811C50161512801-M1.

Test Sample Name: Anker SOLIX Solarbank Prime E10 Power Module; Test Model No.: A17E1

# Test Report

Report No.: 1811C60028412801

Page 11 of 23

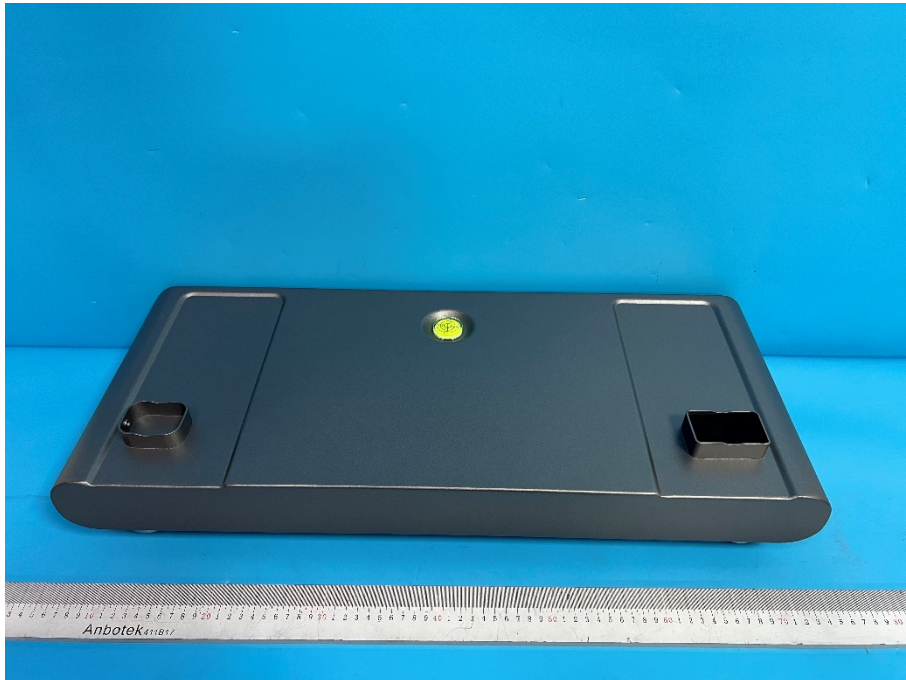
Photograph of Sample



# Test Report

Report No.: 1811C60028412801

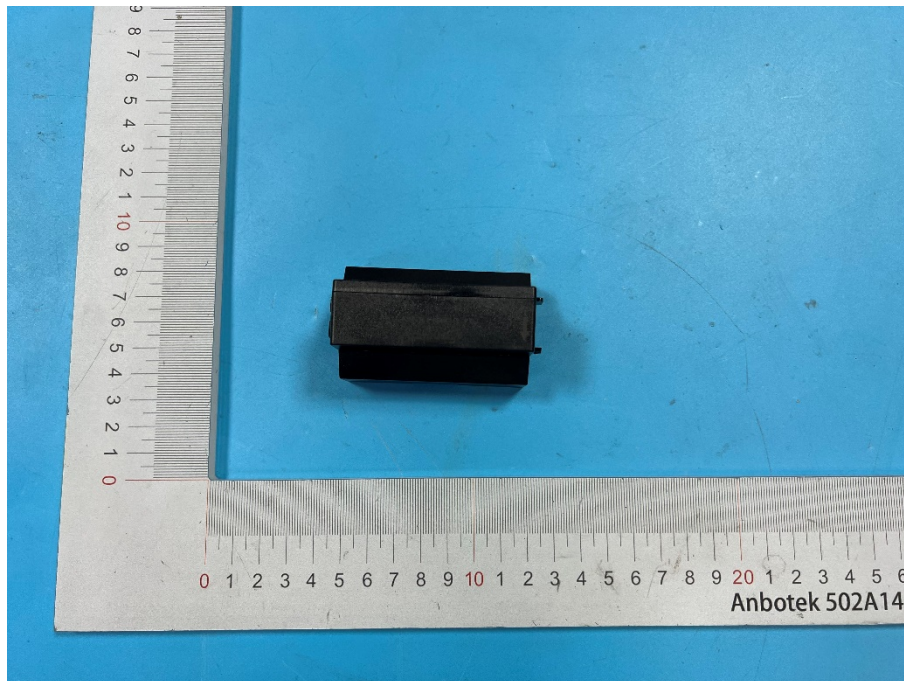
Page 12 of 23



# Test Report

Report No.: 1811C60028412801

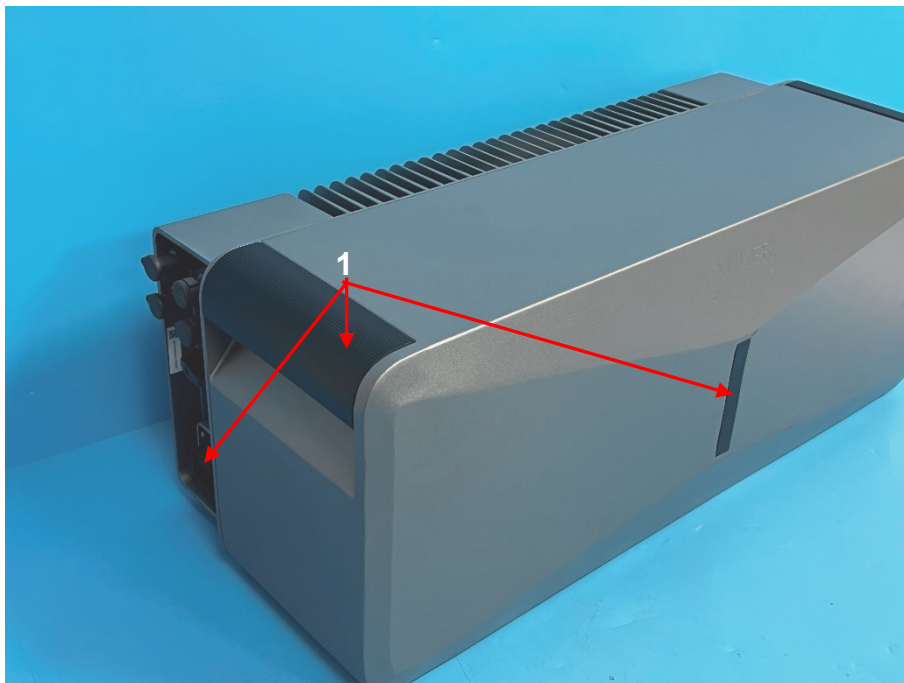
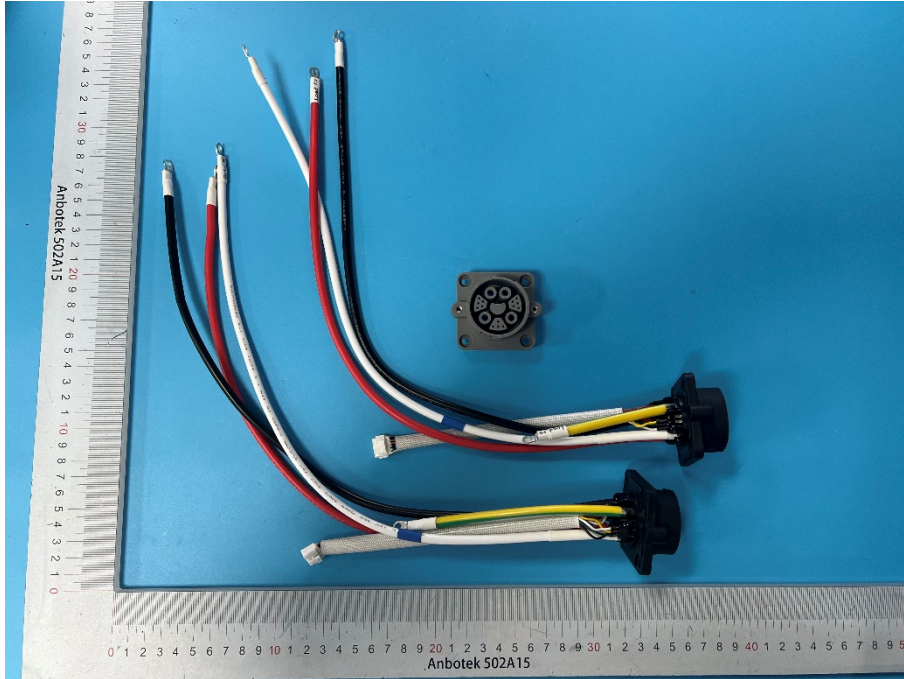
Page 13 of 23



# Test Report

Report No.: 1811C60028412801

Page 14 of 23



# Test Report

Report No.: 1811C60028412801

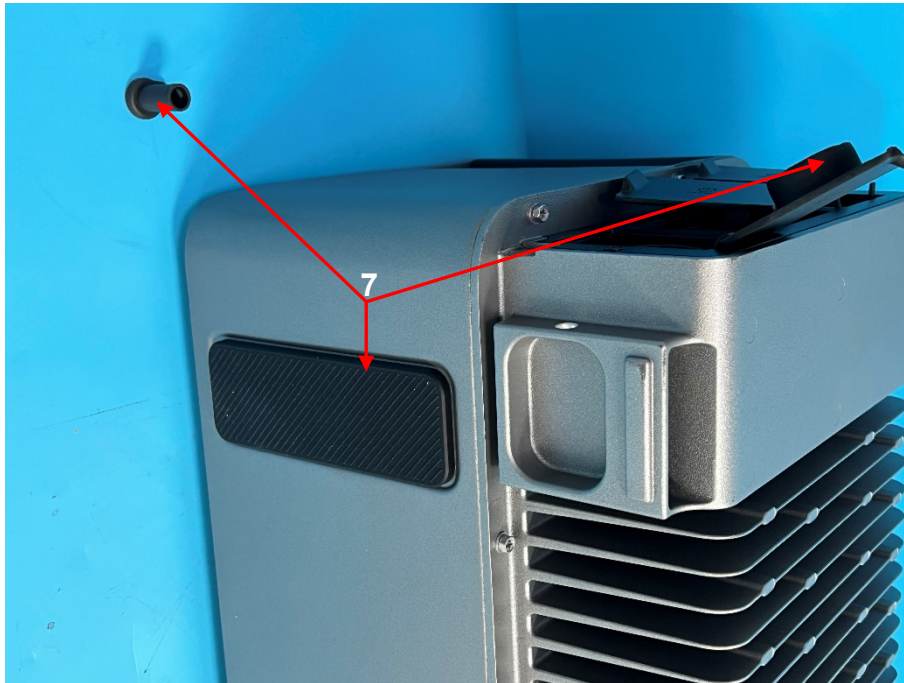
Page 15 of 23



# Test Report

Report No.: 1811C60028412801

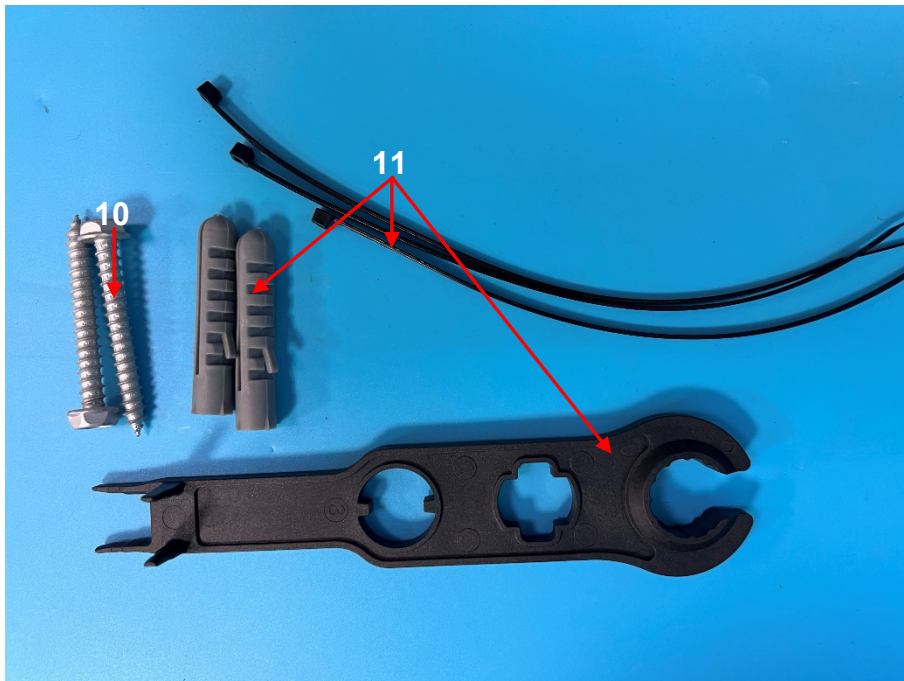
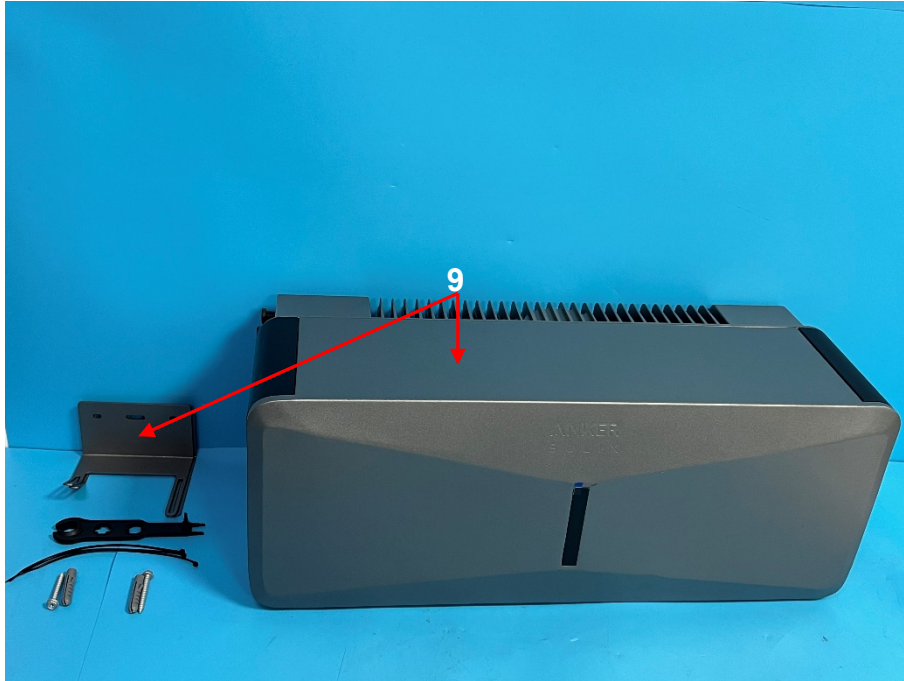
Page 16 of 23



# Test Report

Report No.: 1811C60028412801

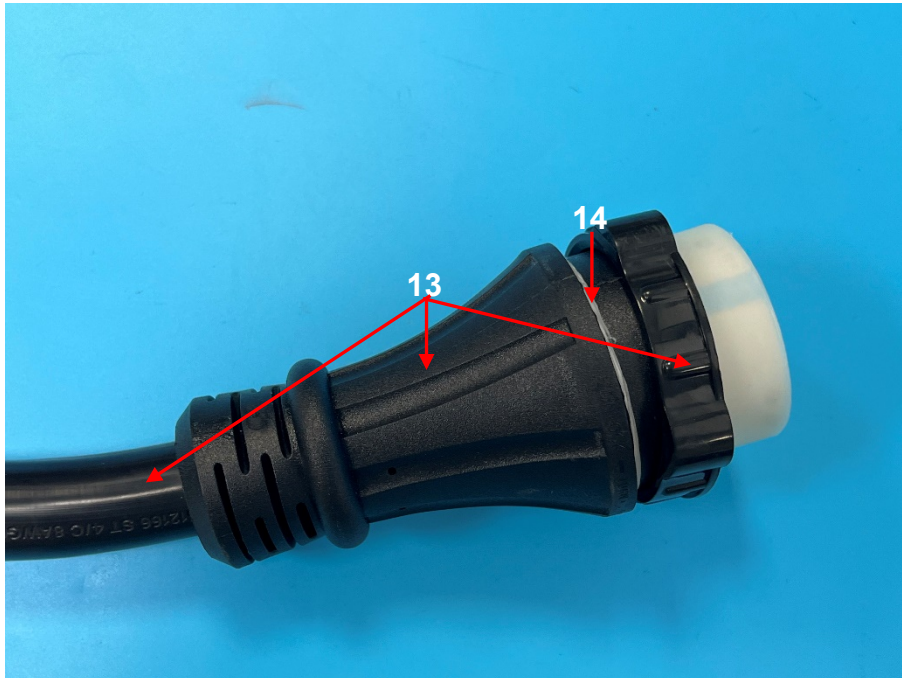
Page 17 of 23



# Test Report

Report No.: 1811C60028412801

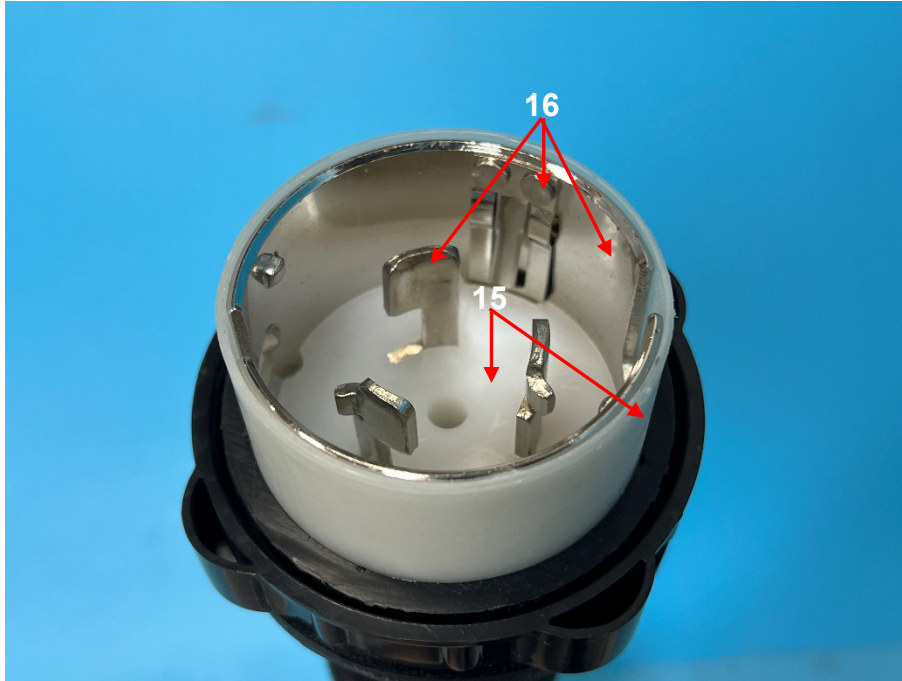
Page 18 of 23



# Test Report

Report No.: 1811C60028412801

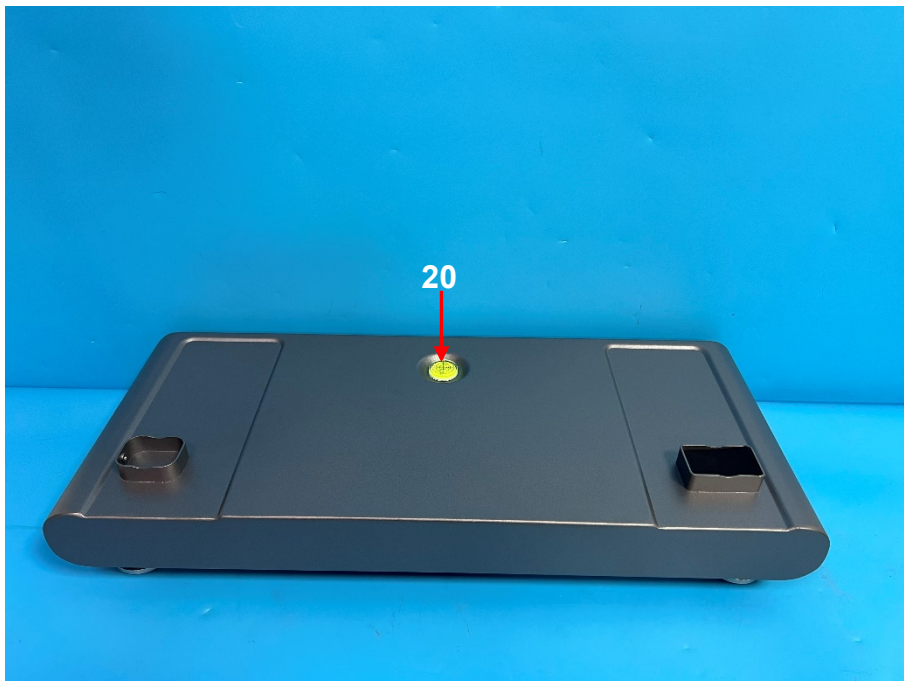
Page 19 of 23



# Test Report

Report No.: 1811C60028412801

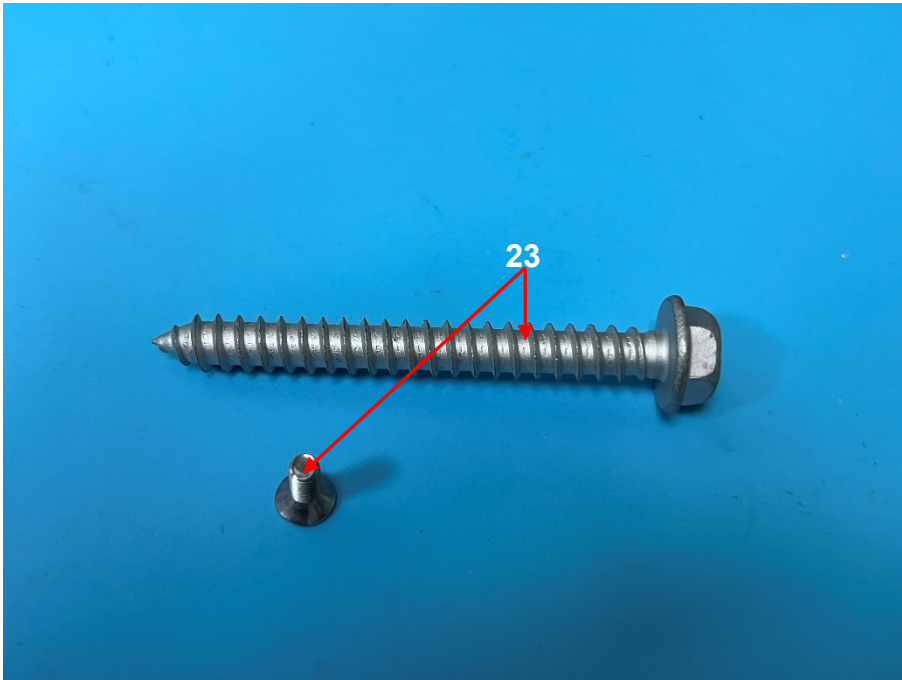
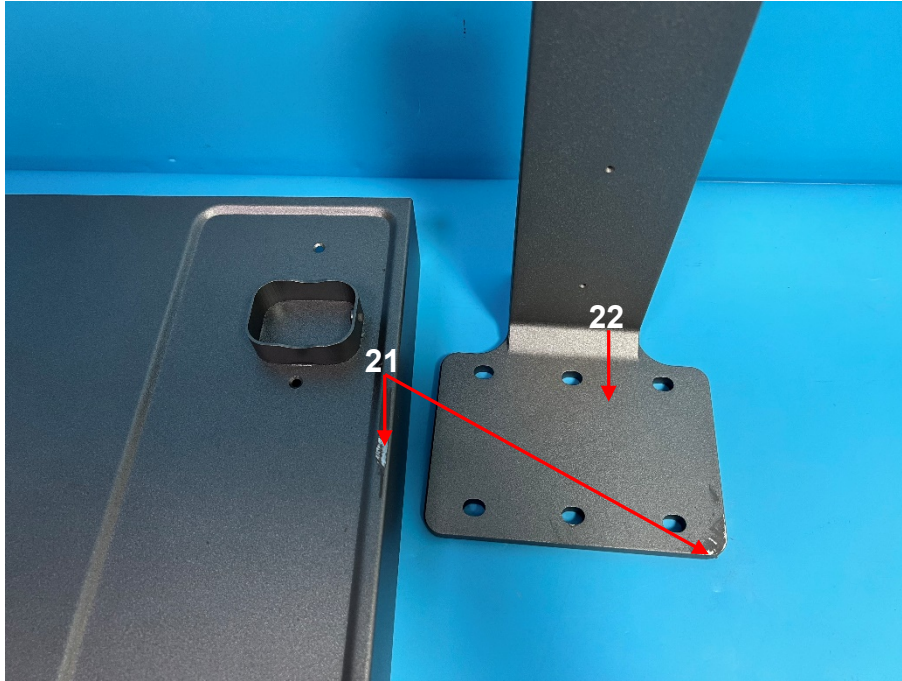
Page 20 of 23



# Test Report

Report No.: 1811C60028412801

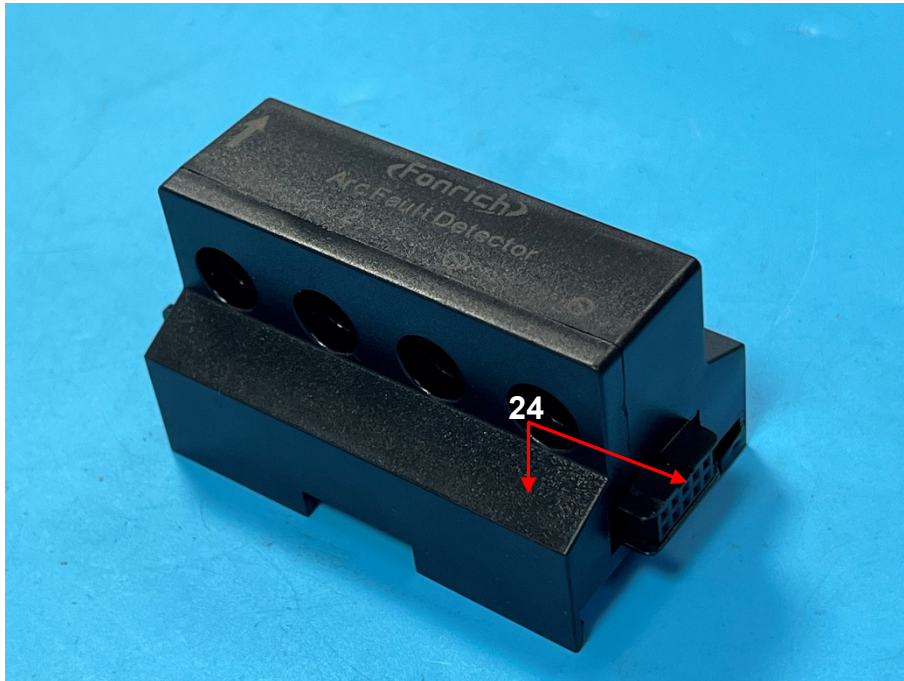
Page 21 of 23



# Test Report

Report No.: 1811C60028412801

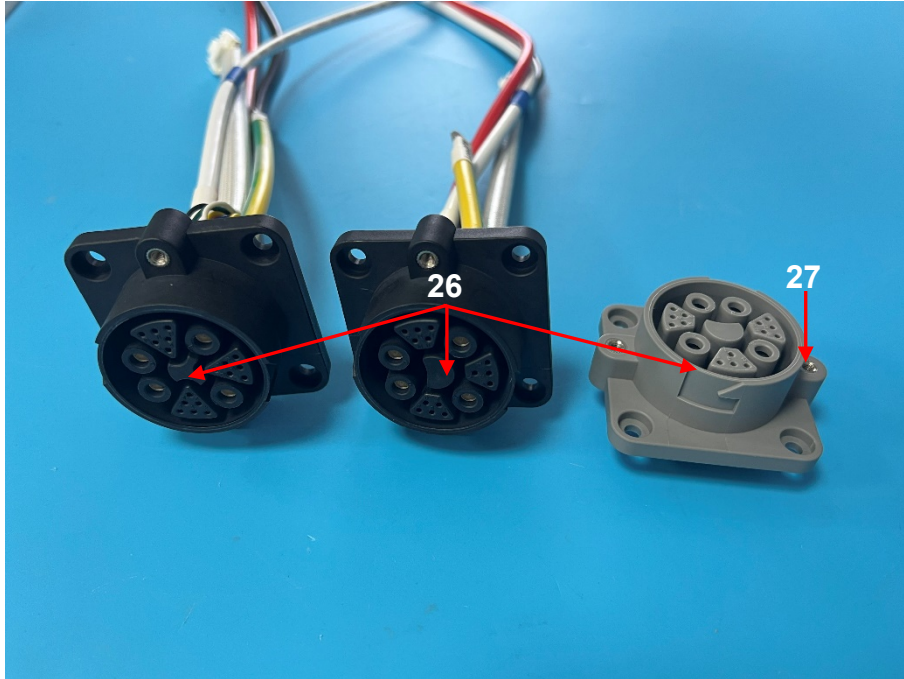
Page 22 of 23



# Test Report

Report No.: 1811C60028412801

Page 23 of 23



\*\*\*\*\* End of Report \*\*\*\*\*

The test report is effective only with both signature and specialized stamp. The result(s) shown in this report refer only to the sample(s) tested. Without written approval of Anbotek, this report can't be reproduced except in full. The data in this report will be synchronized with the corresponding national market supervision and management departments and cross-border e-commerce platforms as required by regulatory agencies.

Shenzhen Anbotek Compliance Laboratory Limited

Testing Laboratory Address: 401, 402, Building A, Hourui No.3 Industrial Zone, No. 2 Kaicheng Road, Hourui Community, Hangcheng Street, Baoan District, Shenzhen, Guangdong, China. / Sogood Industrial Zone Laboratory & 1/F. of Building D, 4/F. of Building A, Sogood Science and Technology Park, Sanwei Community, Hangcheng Subdistrict, Bao'an District, Shenzhen, Guangdong, China.

Laboratory Address: Sogood Industrial Zone Laboratory & 1/F. of Building D, 4/F. of Building A, Sogood Science and Technology Park, Sanwei Community, Hangcheng Subdistrict, Bao'an District, Shenzhen, Guangdong, China.