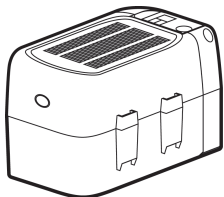




QUICK GUIDE

Battery Backup

Model: BA-100

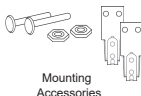


www.skylinkhome.com

What's in the Box?



Battery Backup Unit
(12V Sealed Lead Acid battery included)



Mounting
Accessories



2-Wire Harness (Fused)
(The cord included is with
connectors at each end)



Cushion



User's Instructions

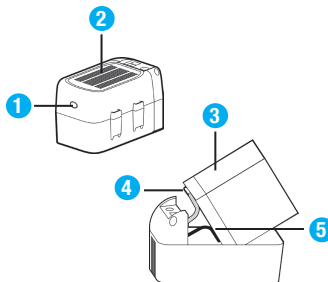
WARNING!

To reduce the risk of severe injury or death:

- Disconnect electrical power to the garage door opener before servicing or repairing.
- Dispose of used battery properly.

Installation

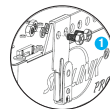
1. Press the latch inwards to release the cover.
2. Remove the cover.
3. Take out the battery and connect the wires to the battery terminal tabs, being careful to match the polarity.
4. Red wire connects to red terminal tab.
5. Black wire connects to black terminal tab.
6. Place the battery back into battery compartment.
7. Close the cover.



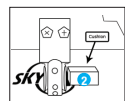
Install the Metal Hanger - EQ/IQ Series

UNPLUG THE GARAGE DOOR OPENER FROM
POWER BEFORE PROCEEDING!

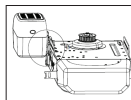
- 1 Use the screws and nuts to mount the metal hanger to the operator mounting plate.



- 2 Affix a cushion at the side of the hanger.



- 3 Install the backup battery unit to the metal hanger.

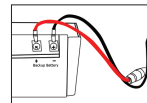


Connecting the Battery Backup - EQ/IQ Series

Important Note: These next two steps must be performed in this exact order very carefully to prevent a short in the battery by accident.

Connecting the battery backup unit to the garage door opener unit:

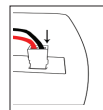
1. Connect the 2-wire harness to the garage door opener unit, being careful to match the polarity.



Red wire connects to the "+" terminal.

Black wire connects to the "-" terminal.

2. Insert the 2-wire harness to the battery backup unit.

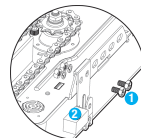


Note: The garage door opener EQ/IQ series requires an AC adapter (sold separately) to charge up the battery. Please contact Skylink for information regarding the AC adapter (Item # 900046).

Install the Metal Hanger - ATOMS Series

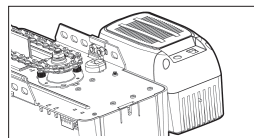
UNPLUG THE GARAGE DOOR OPENER FROM
POWER BEFORE PROCEEDING!

- 1 Use the screws and nuts to mount the metal hanger to the operator mounting plate.



- 2 Affix a cushion at the side of the hanger.

- 3 Install the backup battery unit to the metal hanger.



Connecting the Battery Backup - ATOMS Series

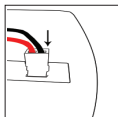
Important Note: These next two steps must be performed in this exact order very carefully to prevent a short in the battery by accident.

Connecting the battery backup unit to the garage door opener unit:

1. Connect the 2-wire harness to the garage door opener unit, being careful to match the polarity.



2. Insert the 2-wire harness to the battery backup unit.

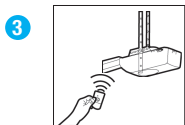
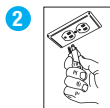
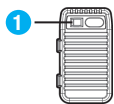


3. The ATOMS will automatically charge the battery when the opener is plugged in.

Testing the Battery

Note: The battery backup must be fully charged for 24 hours before testing or operation.

1. Turn on the battery backup switch.
2. Unplug the garage door opener from the AC power.
3. Activate the garage door opener. (The lamp in the garage opener will not light up).
4. Plug the garage door opener back in.



Battery Status

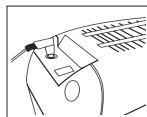
Turn on the backup battery switch, and connect the backup battery with the GDO correctly.

Light Status	Status	Action
Red LED flashing slowly	Fully charged (AC adapter is unplugged)	Ready to provide power to garage door opener
Red LED staying on	Backup battery is weak (AC adapter is unplugged)	Needs to re-charge
Blue LED flashing slowly	Backup battery is being charged (AC adapter is plugged in)	Charging
Blue LED staying on	Fully charged (AC adapter is plugged in)	Ready to use
Blue LED flashing quickly and white LED flashing slowly	Backup battery is not installed (AC adapter is plugged in) or switch is not turned on	Re-install the backup battery. Turn the switch on. Check connection between battery and 2-wire harness.
White LED flashing 3 times quickly	Garage Door Opener is being affected by power outage	Garage Door Opener will operate in 'battery backup' mode

Charging the Battery

The battery unit will take 24 hours to fully charge. A fully charged battery provides 24VDC to the garage door opener for 1 to 2 days of normal operation during AC power outages. When the battery level drops too low, the battery unit will no longer operate.

If the opener does not provide the charging feature, plug in an AC adapter (sold separately) to charge the battery. Please contact Skylink to purchase the AC adapter.



Refer to the lights indication section above to check the battery status.

The battery life is about 3 to 5 years for normal usage. To obtain maximum battery life and prevent any damage, turn off the Battery Backup Unit when the garage door opener is supposed to be unplugged for a long period of time.

Note: Door operation may be limited if the battery is not fully charged, or the garage door opener light may not turn on during battery operation.

Troubleshooting

1. Why can't I operate my opener with a BA-100?
Make sure the BA-100 is fully charged.
2. Can I use BA-100 to operate other brands of an opener?
BA-100 is designed to work with Skylink openers only.
3. Can I charge the BA-100 with my opener?
You can use the AC adapter (sold separately) to charge the BA-100.
4. Why does the light stay off when I use the BA-100 to operate the opener?
The opener light will not turn on during the battery operation.

Warranty

If within one year from date of purchase, this product should become defective (except battery), due to faulty workmanship or materials, it will be repaired or replaced, without charge. Proof of purchase and a Return Authorization Number are required.



Need help?

Visit our website or call our Customer Service
9:00am - 5:00pm EST, Monday-Friday

1-800-304-1187
WWW.SKYLINKHOME.COM