



Shenzhen LCS Compliance Testing Laboratory Ltd.

Add: Unit F-G, Floor 23, Kechuang Building, Quanzhi Innovation Science and Technology Park,  
Shajing Town, Bao'an District, Shenzhen, Guangdong, China

Tel: (86)755-23353209

Internet: Http://www.LCS-cert.com

Report No.: LCS180418047AR

## TEST REPORT

Client company : Bobsweep USA  
Client address : 3773 HOW HUGHES PKWY STE 500S, LAS VEGAS NV 89169  
Manufacturer : Bobsweep Inc.  
Address : 709-1121 BAY STREET, TORONTO, ON, M5S3L9 CANADA

Report on the submitted samples said to be:

Sample Name : bObsweep PetHair Plus Robotic Vacuum Cleaner and Mop  
Trade Mark : bObsweep  
Style/ Item No. : WPP56001  
Sample Receiving Date : April 19, 2018  
Testing Period : April 19, 2018 ~ April 26, 2018  
Results : Please refer to next page(s).

\*\*\*\*\*

### Summary of Test Results:

#### TEST REQUEST

#### CONCLUSION

A US California Proposition 65. on Lead and Cadmium content

Pass

B US California Proposition 65. on Phthalates content

Pass

\*\*\*\*\*

Signed for and on behalf of LCS

Written By:

Linda Ning

Checked by:

Suez Su

Approved by:

Lily Dan



Shenzhen LCS Compliance Testing Laboratory Ltd.

Add: Unit F-G, Floor 23, Kechuang Building, Quanzhi Innovation Science and Technology Park,  
Shajing Town, Bao'an District, Shenzhen, Guangdong, China

Tel: (86)755-23353209

Internet: [Http://www.LCS-cert.com](http://www.LCS-cert.com)

Report No.: LCS180418047AR

## Results:

### Tested part(s):

- (1) Blue paint;
- (2) Black plastic shell;
- (3) Black plastic key;
- (4) Black plastic (switch);
- (5) Black soft plastic strip;
- (6) Black plastic (roller);
- (7) Black plastic (power head);
- (8) Silver metal (plug);
- (9) Black plastic wire (power supply);
- (10) Blue brush;
- (11) Black brush;
- (12) Black plastic rod (Mao Shuagan);
- (13) Black plastic (edge brush);
- (14) Silver brush (edge brush);
- (15) Black plastic (small brush);
- (16) white rag;
- (17) Silver metal sheet;
- (18) Silver metal thread;
- (19) Black plastic line skin;
- (20) Red plastic line skin;
- (21) White plastic line skin;
- (22) Yellow plastic line skin;
- (23) Blue plastic line skin;
- (24) Green plastic line skin;
- (25) Orange plastic line skin;
- (26) Pink plastic line skin;
- (27) Blue soft plastic key (remote control);
- (28) Black adhesive strip.

### A. US California Proposition 65. on Lead and Cadmium content

Test method: With reference to US EPA 3052:1996/ EPA 3050B:1996 & EPA 6010C:2007, by acid digestion and analysis was performed by inductively coupled plasma atomic emission spectrometer (ICP-OES)

Item	Unit	MDL	Results						Limit
			(1)	(2)	(3)	(4)	(5)	(6)	
Lead Content (Pb)	ppm	2	N.D.	N.D.	N.D.	N.D.	25	N.D.	100ppm
Cadmium (Cd)	ppm	2	N.D.	N.D.	N.D.	N.D.	N.D.	N.D.	300ppm
Conclusion	/	/	Pass	Pass	Pass	Pass	Pass	Pass	/

\*\*\*\*\*



Shenzhen LCS Compliance Testing Laboratory Ltd.

Add: Unit F-G, Floor 23, Kechuang Building, Quanzhi Innovation Science and Technology Park,  
Shajing Town, Bao'an District, Shenzhen, Guangdong, China

Tel: (86)755-23353209

Internet: [Http://www.LCS-cert.com](http://www.LCS-cert.com)

Report No.: LCS180418047AR

Item	Unit	MDL	Results						Limit
			(7)	(8)	(9)	(10)	(11)	(12)	
Lead Content (Pb)	ppm	2	N.D.	82	N.D.	N.D.	N.D.	N.D.	100ppm
Cadmium (Cd)	ppm	2	N.D.	N.D.	N.D.	N.D.	N.D.	N.D.	300ppm
Conclusion	/	/	Pass	Pass	Pass	Pass	Pass	Pass	/

Item	Unit	MDL	Results						Limit
			(13)	(14)	(15)	(16)	(17)	(18)	
Lead Content (Pb)	ppm	2	N.D.	16	N.D.	N.D.	54	64	100ppm
Cadmium (Cd)	ppm	2	N.D.	N.D.	N.D.	N.D.	N.D.	N.D.	300ppm
Conclusion	/	/	Pass	Pass	Pass	Pass	Pass	Pass	/

Item	Unit	MDL	Results						Limit
			(19)	(20)	(21)	(22)	(23)	(24)	
Lead Content (Pb)	ppm	2	N.D.	N.D.	N.D.	N.D.	N.D.	N.D.	100ppm
Cadmium (Cd)	ppm	2	N.D.	N.D.	N.D.	N.D.	N.D.	N.D.	300ppm
Conclusion	/	/	Pass	Pass	Pass	Pass	Pass	Pass	/

Item	Unit	MDL	Results				Limit
			(25)	(26)	(27)	(28)	
Lead Content (Pb)	ppm	2	N.D.	N.D.	N.D.	N.D.	100ppm
Cadmium (Cd)	ppm	2	N.D.	N.D.	N.D.	N.D.	300ppm
Conclusion	/	/	Pass	Pass	Pass	Pass	/

Note:

- N.D. = Not Detected or less than MDL
- MDL = Method Detection Limit
- Flow chart appendix is included.
- Photo appendix is included.

\*\*\*\*\*



Shenzhen LCS Compliance Testing Laboratory Ltd.

Add: Unit F-G, Floor 23, Kechuang Building, Quanzhi Innovation Science and Technology Park,  
Shajing Town, Bao'an District, Shenzhen, Guangdong, China

Tel: (86)755-23353209

Internet: [Http://www.LCS-cert.com](http://www.LCS-cert.com)

Report No.: LCS180418047AR

## B、US California Proposition 65. on Phthalates content

Test method: With reference to US EPA 3540C:1996/ EPA 3550C:2007/ EPA 8270D:2014,  
by solvent extraction and analysis was performed by gas chromatographic-mass spectrometer (GC-MS)

Item	Unit	MDL	Results					Limit
			(1)	(2)	(3)	(4)	(5)	
Dibutyl Phthalate (DBP)	mk/kg	50	N.D.	N.D.	N.D.	N.D.	N.D.	1000
Benzylbutyl Phthalate (BBP)	mk/kg	50	N.D.	N.D.	N.D.	N.D.	N.D.	1000
Bis-(2-ethylhexyl) Phthalate (DEHP)	mk/kg	50	N.D.	N.D.	N.D.	N.D.	N.D.	1000
Diisodecyl Phthalate (DIDP)	mk/kg	50	N.D.	N.D.	N.D.	N.D.	N.D.	1000
Di-n-hexyl Phthalate (DnHP)	mk/kg	50	N.D.	N.D.	N.D.	N.D.	N.D.	1000
Diisononyl Phthalate(DINP)	mk/kg	50	N.D.	N.D.	N.D.	N.D.	N.D.	1000
Conclusion	/	/	Pass	Pass	Pass	Pass	Pass	

Item	Unit	MDL	Results					Limit
			(6)	(7)	(9)	(10)	(11)	
Dibutyl Phthalate (DBP)	mk/kg	50	N.D.	N.D.	N.D.	N.D.	N.D.	1000
Benzylbutyl Phthalate (BBP)	mk/kg	50	N.D.	N.D.	N.D.	N.D.	N.D.	1000
Bis-(2-ethylhexyl) Phthalate (DEHP)	mk/kg	50	N.D.	N.D.	N.D.	N.D.	N.D.	1000
Diisodecyl Phthalate (DIDP)	mk/kg	50	N.D.	N.D.	N.D.	N.D.	N.D.	1000
Di-n-hexyl Phthalate (DnHP)	mk/kg	50	N.D.	N.D.	N.D.	N.D.	N.D.	1000
Diisononyl Phthalate(DINP)	mk/kg	50	N.D.	N.D.	N.D.	N.D.	N.D.	1000
Conclusion	/	/	Pass	Pass	Pass	Pass	Pass	

\*\*\*\*\*



Shenzhen LCS Compliance Testing Laboratory Ltd.

Add: Unit F-G, Floor 23, Kechuang Building, Quanzhi Innovation Science and Technology Park,  
Shajing Town, Bao'an District, Shenzhen, Guangdong, China

Tel: (86)755-23353209

Internet: [Http://www.LCS-cert.com](http://www.LCS-cert.com)

Report No.: LCS180418047AR

Item	Unit	MDL	Results					Limit
			(12)	(13)	(14)	(15)	(16)	
Dibutyl Phthalate (DBP)	mk/kg	50	N.D.	N.D.	N.D.	N.D.	N.D.	1000
Benzylbutyl Phthalate (BBP)	mk/kg	50	N.D.	N.D.	N.D.	N.D.	N.D.	1000
Bis-(2-ethylhexyl) Phthalate (DEHP)	mk/kg	50	N.D.	N.D.	N.D.	N.D.	N.D.	1000
Diisodecyl Phthalate (DIDP)	mk/kg	50	N.D.	N.D.	N.D.	N.D.	N.D.	1000
Di-n-hexyl Phthalate (DnHP)	mk/kg	50	N.D.	N.D.	N.D.	N.D.	N.D.	1000
Diisononyl Phthalate(DINP)	mk/kg	50	N.D.	N.D.	N.D.	N.D.	N.D.	1000
Conclusion	/	/	Pass	Pass	Pass	Pass	Pass	

Item	Unit	MDL	Results					Limit
			(19)	(20)	(21)	(22)	(23)	
Dibutyl Phthalate (DBP)	mk/kg	50	N.D.	N.D.	N.D.	N.D.	N.D.	1000
Benzylbutyl Phthalate (BBP)	mk/kg	50	N.D.	N.D.	N.D.	N.D.	N.D.	1000
Bis-(2-ethylhexyl) Phthalate (DEHP)	mk/kg	50	N.D.	N.D.	N.D.	N.D.	N.D.	1000
Diisodecyl Phthalate (DIDP)	mk/kg	50	N.D.	N.D.	N.D.	N.D.	N.D.	1000
Di-n-hexyl Phthalate (DnHP)	mk/kg	50	N.D.	N.D.	N.D.	N.D.	N.D.	1000
Diisononyl Phthalate(DINP)	mk/kg	50	N.D.	N.D.	N.D.	N.D.	N.D.	1000
Conclusion	/	/	Pass	Pass	Pass	Pass	Pass	

Item	Unit	MDL	Results					Limit
			(24)	(25)	(26)	(27)	(28)	
Dibutyl Phthalate (DBP)	mk/kg	50	N.D.	N.D.	N.D.	N.D.	N.D.	1000
Benzylbutyl Phthalate (BBP)	mk/kg	50	N.D.	N.D.	N.D.	N.D.	N.D.	1000
Bis-(2-ethylhexyl) Phthalate (DEHP)	mk/kg	50	N.D.	N.D.	N.D.	N.D.	N.D.	1000
Diisodecyl Phthalate (DIDP)	mk/kg	50	N.D.	N.D.	N.D.	N.D.	N.D.	1000
Di-n-hexyl Phthalate (DnHP)	mk/kg	50	N.D.	N.D.	N.D.	N.D.	N.D.	1000
Diisononyl Phthalate(DINP)	mk/kg	50	N.D.	N.D.	N.D.	N.D.	N.D.	1000
Conclusion	/	/	Pass	Pass	Pass	Pass	Pass	

\*\*\*\*\*

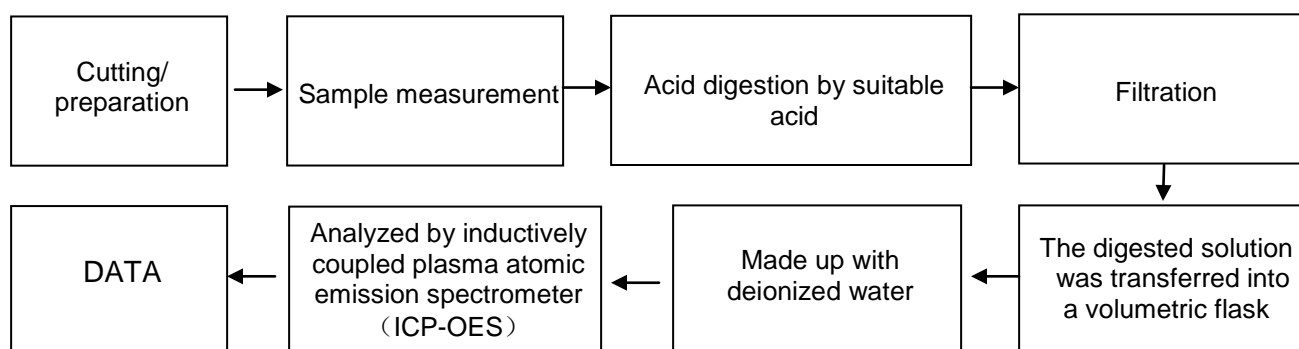


Note:

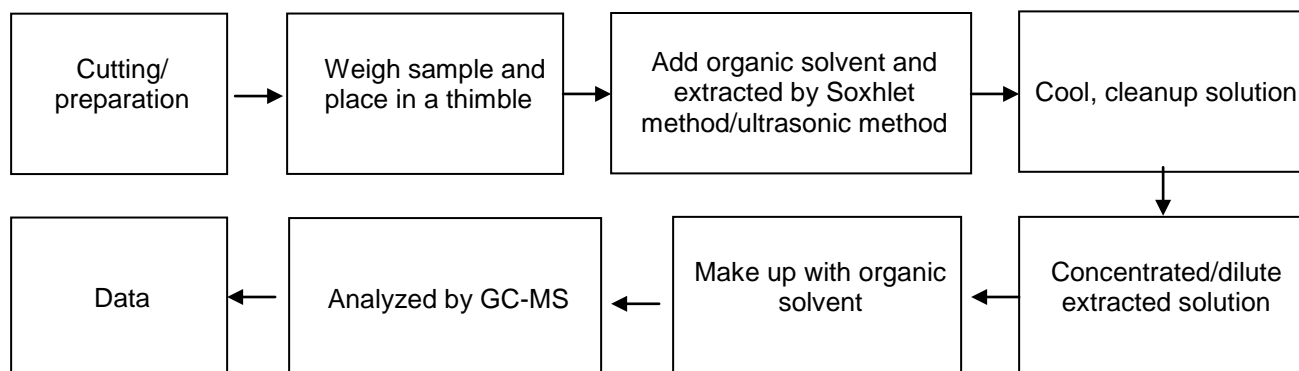
- N.D. = Not Detected or less than MDL
- MDL = Method Detection Limit
- Flow chart appendix is included.
- Photo appendix is included.

## AppendixI

### Test flow chart for Total Lead content and Cadmium content :



### Test flow chart for Phthalates content:



\*\*\*\*\*



Shenzhen LCS Compliance Testing Laboratory Ltd.

Add: Unit F-G, Floor 23, Kechuang Building, Quanzhi Innovation Science and Technology Park,  
Shajing Town, Bao'an District, Shenzhen, Guangdong, China

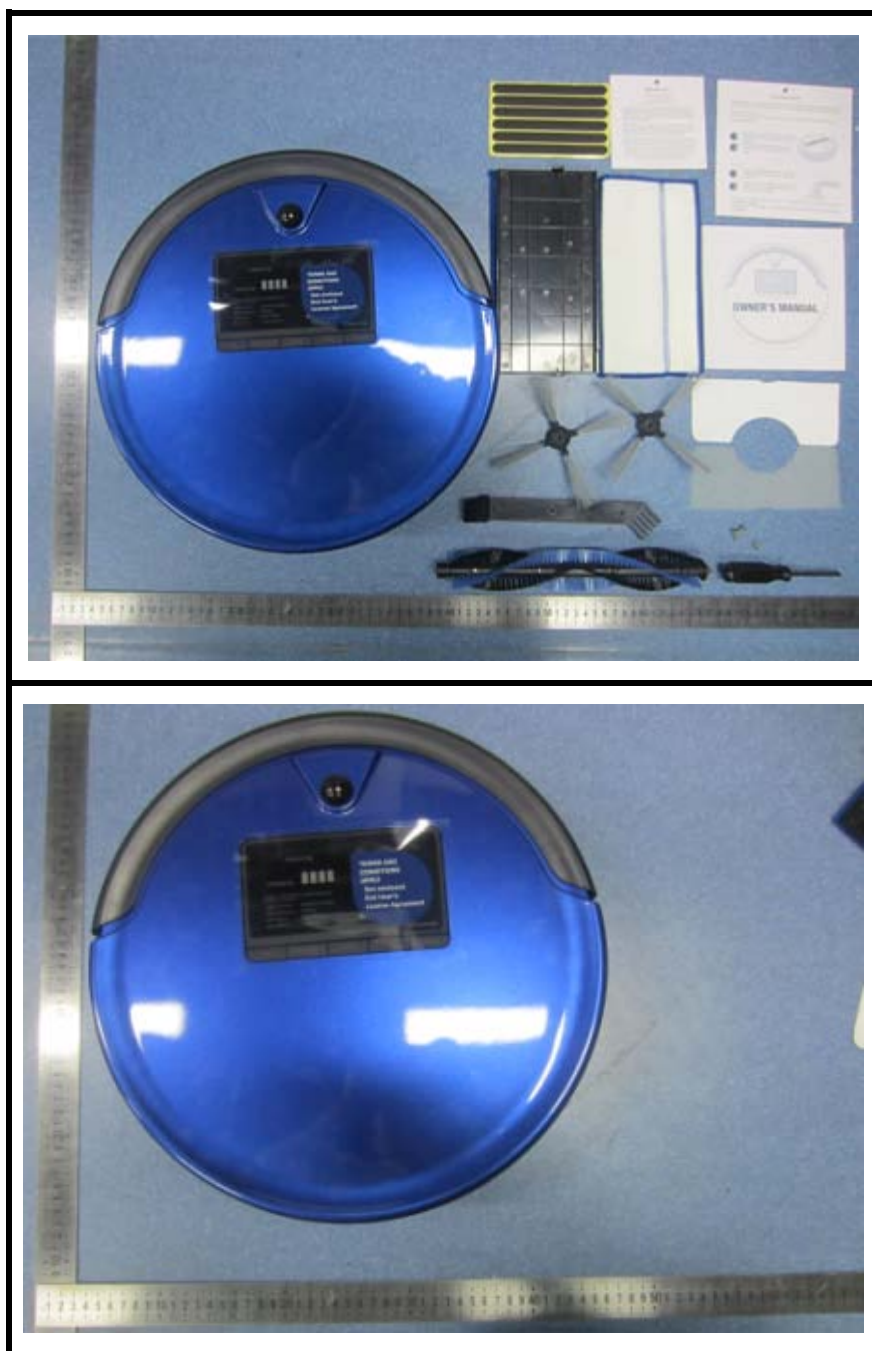
Tel: (86)755-23353209

Internet: [Http://www.LCS-cert.com](http://www.LCS-cert.com)

Report No.: LCS180418047AR

## AppendixII

Photograph of Sample







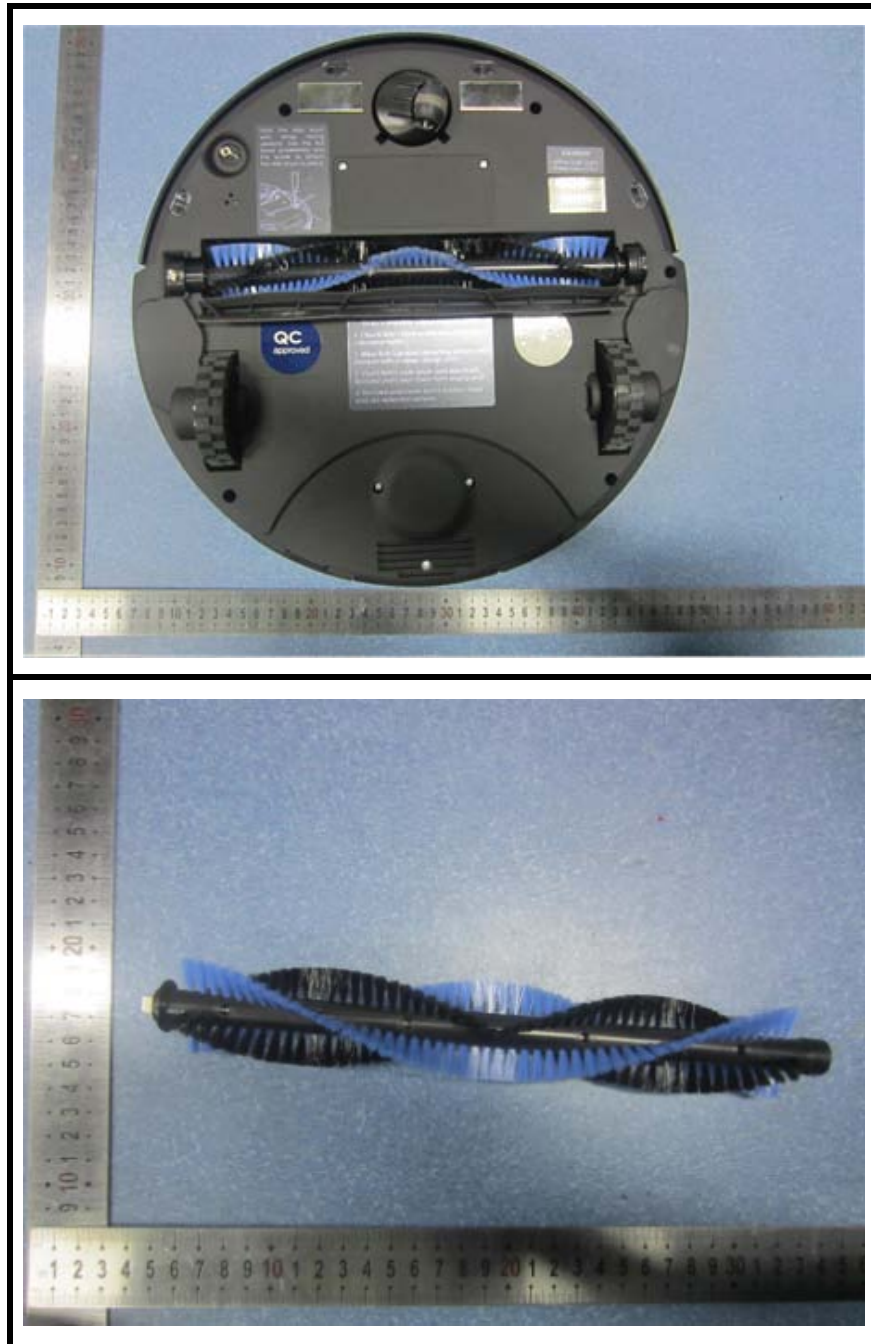
Shenzhen LCS Compliance Testing Laboratory Ltd.

Add: Unit F-G, Floor 23, Kechuang Building, Quanzhi Innovation Science and Technology Park,  
Shajing Town, Bao'an District, Shenzhen, Guangdong, China

Tel: (86)755-23353209

Internet: [Http://www.LCS-cert.com](http://www.LCS-cert.com)

Report No.: LCS180418047AR







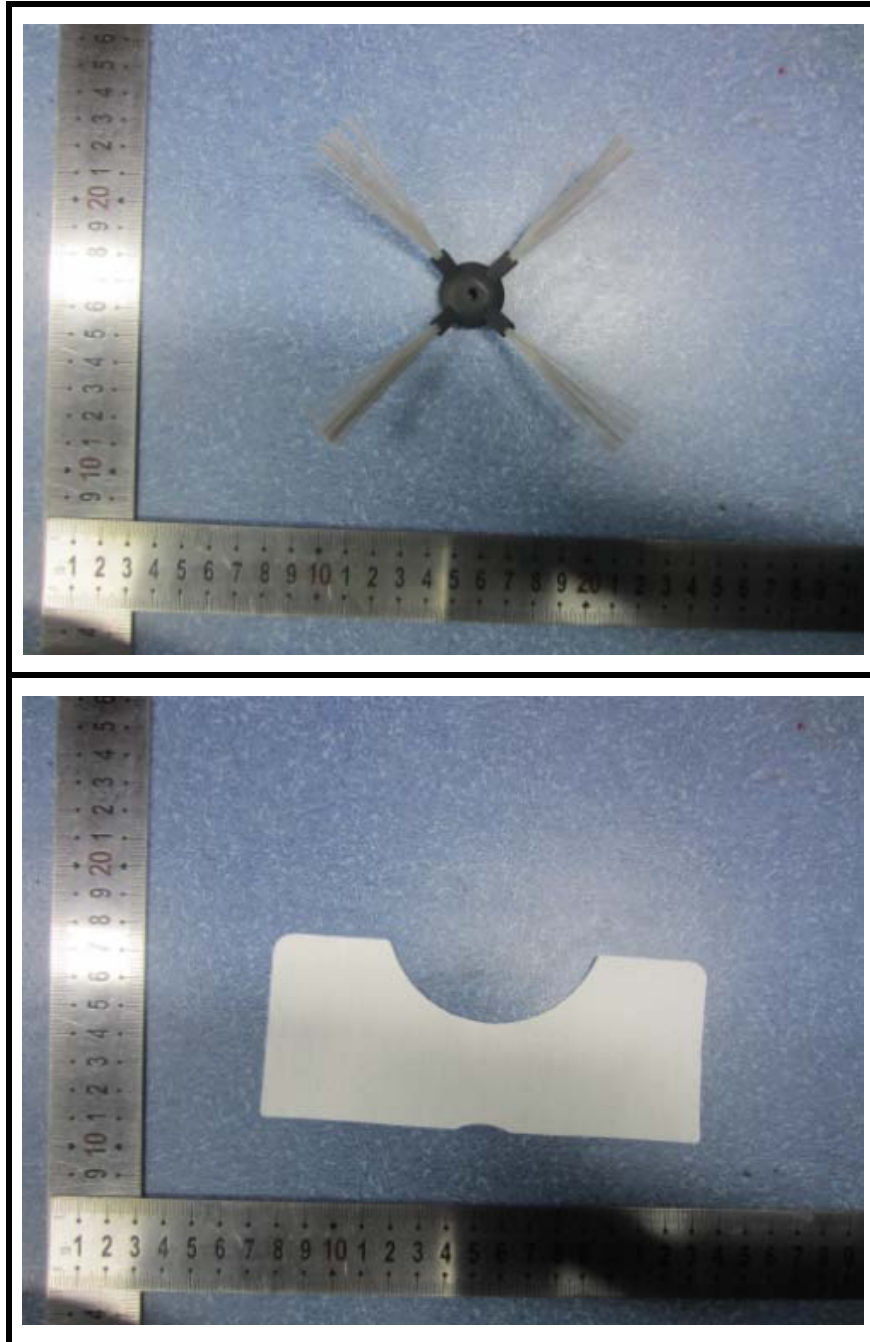
Shenzhen LCS Compliance Testing Laboratory Ltd.

Add: Unit F-G, Floor 23, Kechuang Building, Quanzhi Innovation Science and Technology Park,  
Shajing Town, Bao'an District, Shenzhen, Guangdong, China

Tel: (86)755-23353209

Internet: [Http://www.LCS-cert.com](http://www.LCS-cert.com)

Report No.: LCS180418047AR





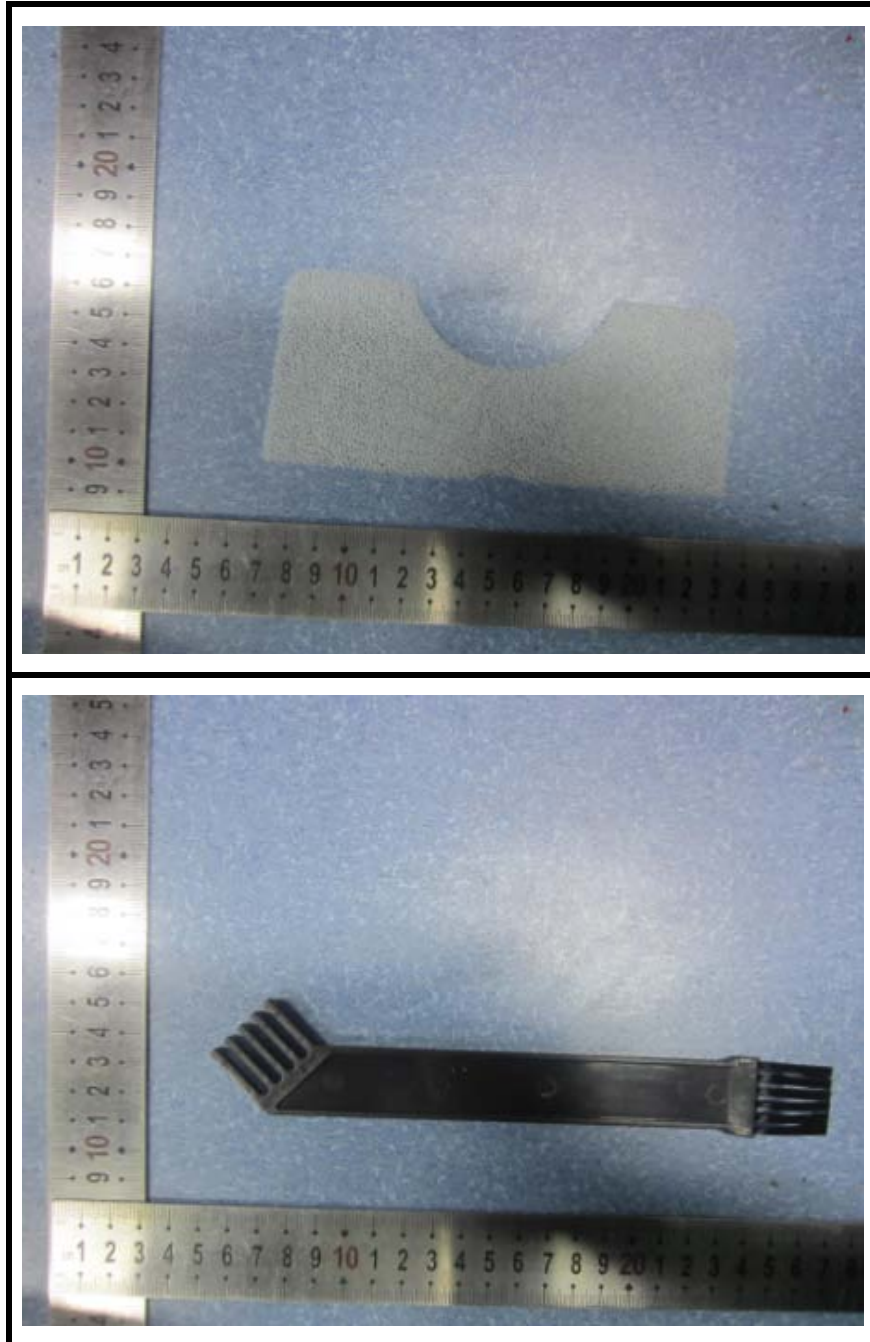
Shenzhen LCS Compliance Testing Laboratory Ltd.

Add: Unit F-G, Floor 23, Kechuang Building, Quanzhi Innovation Science and Technology Park,  
Shajing Town, Bao'an District, Shenzhen, Guangdong, China

Tel: (86)755-23353209

Internet: [Http://www.LCS-cert.com](http://www.LCS-cert.com)

Report No.: LCS180418047AR





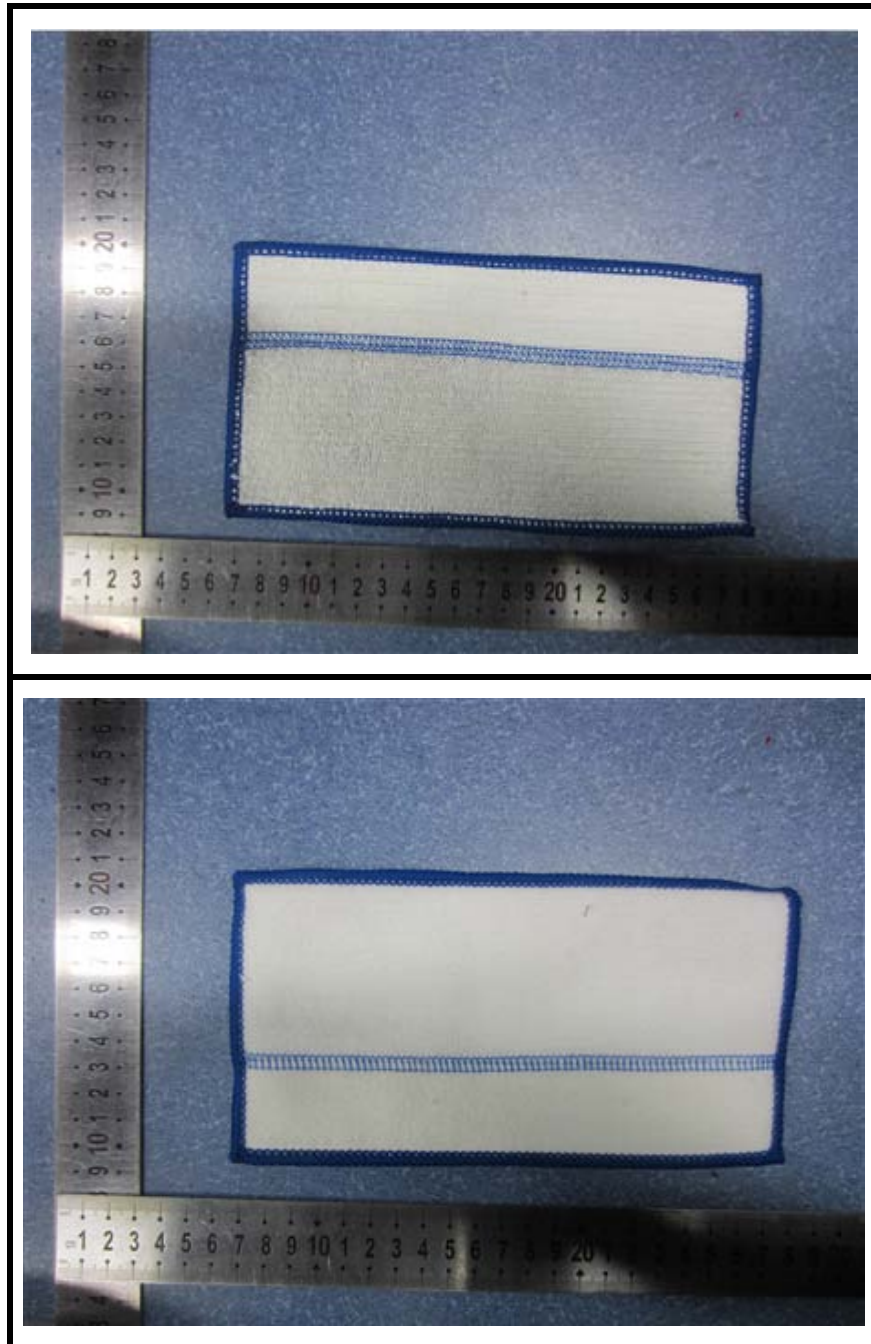
Shenzhen LCS Compliance Testing Laboratory Ltd.

Add: Unit F-G, Floor 23, Kechuang Building, Quanzhi Innovation Science and Technology Park,  
Shajing Town, Bao'an District, Shenzhen, Guangdong, China

Tel: (86)755-23353209

Internet: [Http://www.LCS-cert.com](http://www.LCS-cert.com)

Report No.: LCS180418047AR





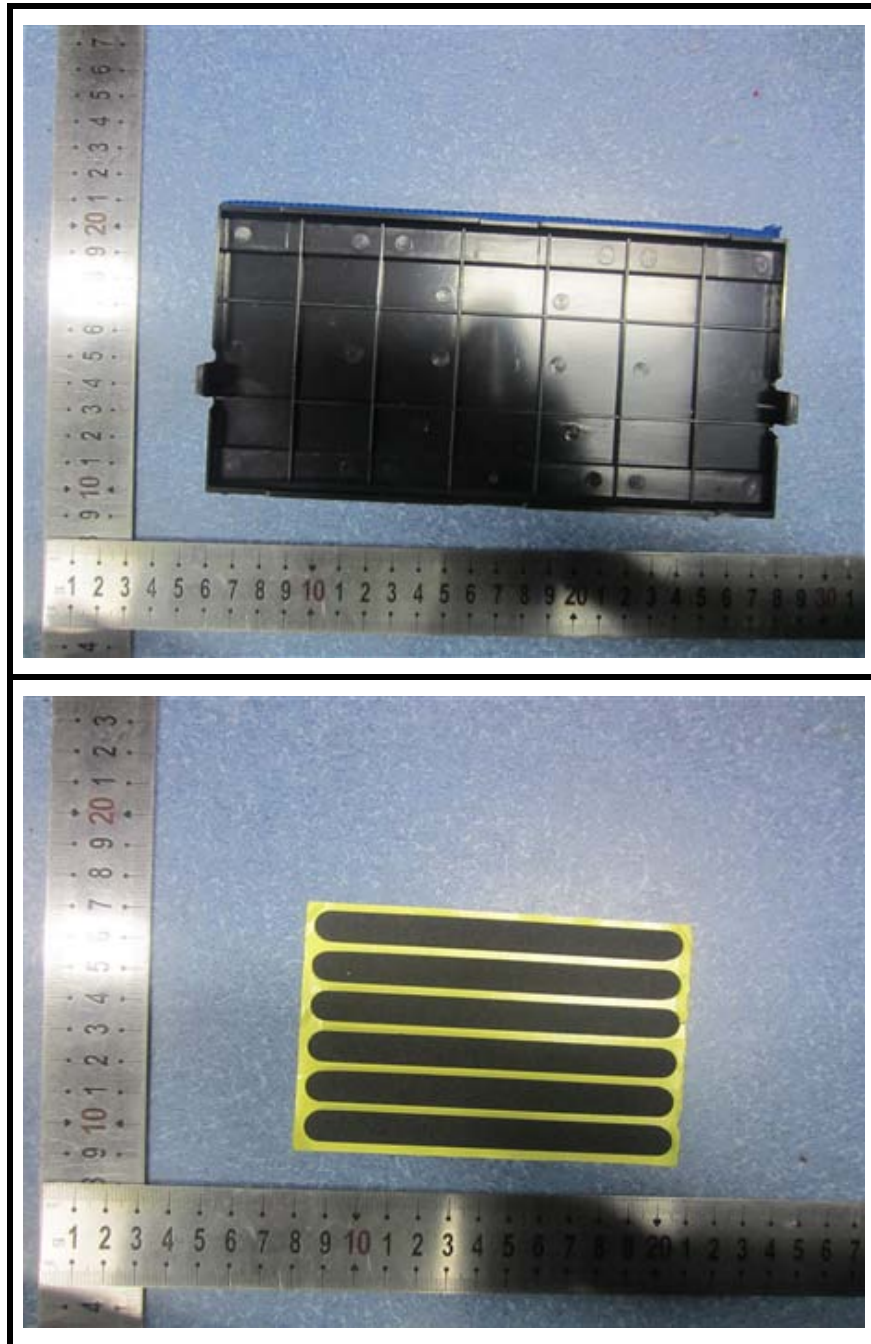
Shenzhen LCS Compliance Testing Laboratory Ltd.

Add: Unit F-G, Floor 23, Kechuang Building, Quanzhi Innovation Science and Technology Park,  
Shajing Town, Bao'an District, Shenzhen, Guangdong, China

Tel: (86)755-23353209

Internet: [Http://www.LCS-cert.com](http://www.LCS-cert.com)

Report No.: LCS180418047AR







Shenzhen LCS Compliance Testing Laboratory Ltd.

Add: Unit F-G, Floor 23, Kechuang Building, Quanzhi Innovation Science and Technology Park,  
Shajing Town, Bao'an District, Shenzhen, Guangdong, China

Tel: (86)755-23353209

Internet: [Http://www.LCS-cert.com](http://www.LCS-cert.com)

Report No.: LCS180418047AR





Shenzhen LCS Compliance Testing Laboratory Ltd.

Add: Unit F-G, Floor 23, Kechuang Building, Quanzhi Innovation Science and Technology Park,  
Shajing Town, Bao'an District, Shenzhen, Guangdong, China

Tel: (86)755-23353209

Internet: [Http://www.LCS-cert.com](http://www.LCS-cert.com)

Report No.: LCS180418047AR







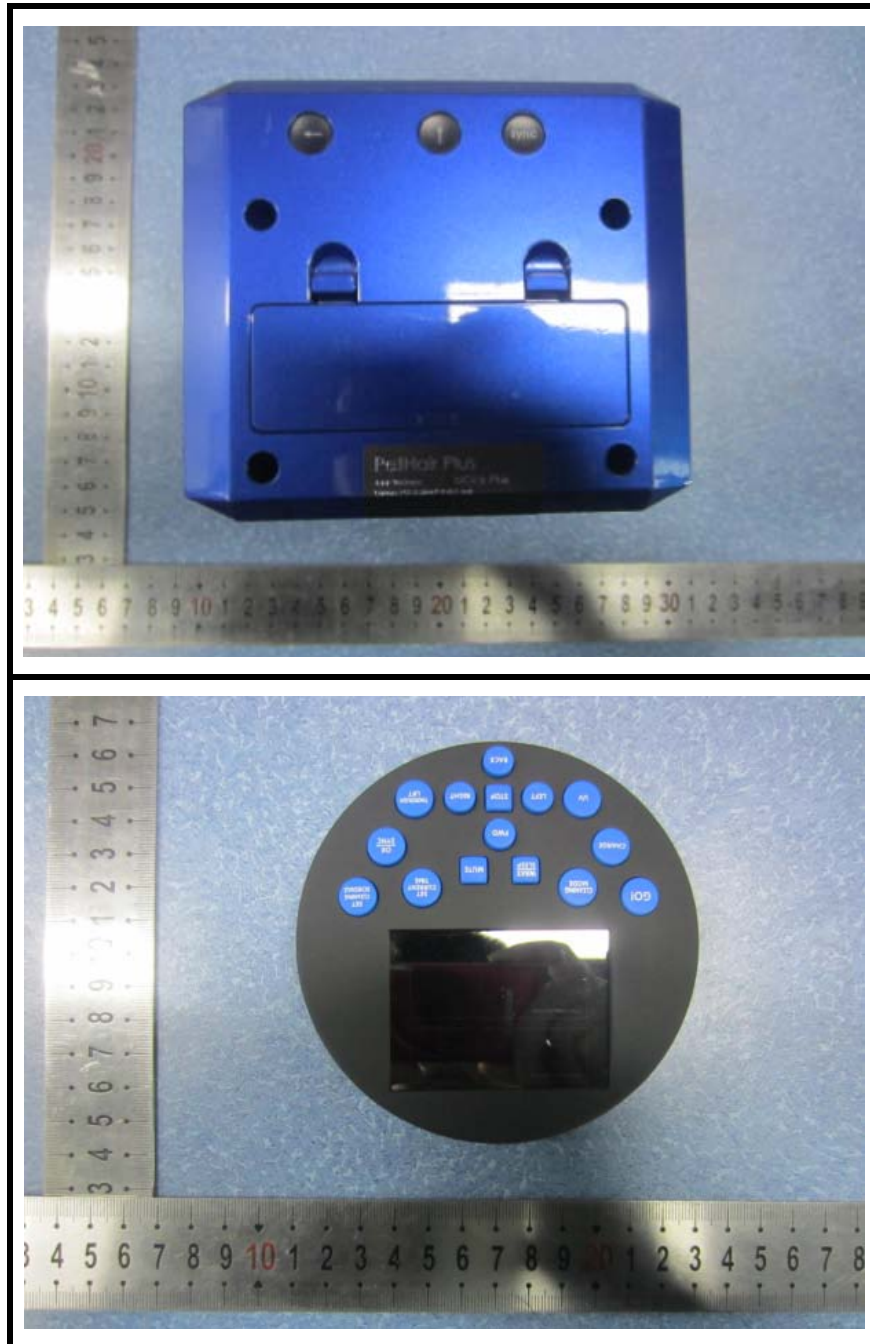
Shenzhen LCS Compliance Testing Laboratory Ltd.

Add: Unit F-G, Floor 23, Kechuang Building, Quanzhi Innovation Science and Technology Park,  
Shajing Town, Bao'an District, Shenzhen, Guangdong, China

Tel: (86)755-23353209

Internet: [Http://www.LCS-cert.com](http://www.LCS-cert.com)

Report No.: LCS180418047AR





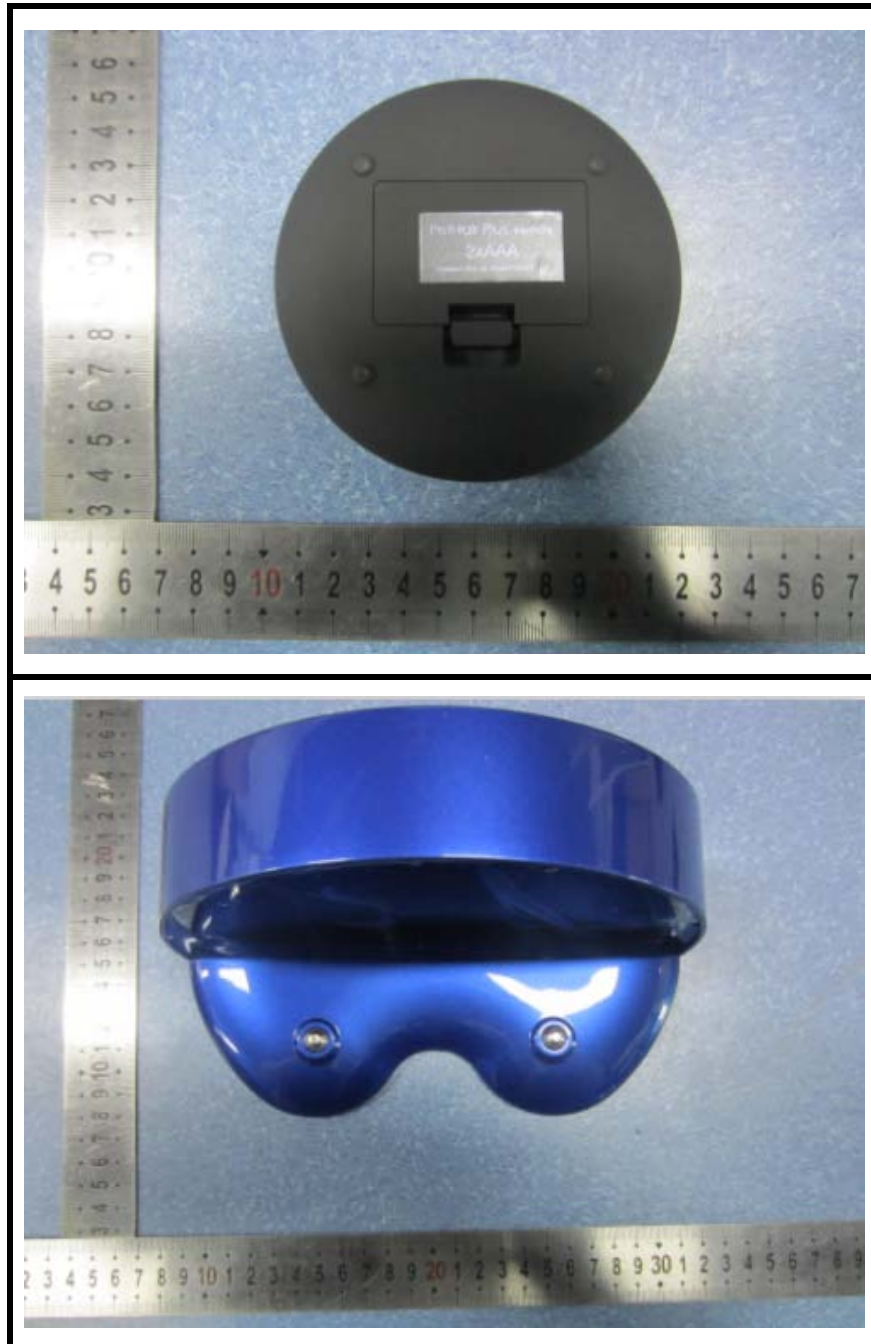
Shenzhen LCS Compliance Testing Laboratory Ltd.

Add: Unit F-G, Floor 23, Kechuang Building, Quanzhi Innovation Science and Technology Park,  
Shajing Town, Bao'an District, Shenzhen, Guangdong, China

Tel: (86)755-23353209

Internet: [Http://www.LCS-cert.com](http://www.LCS-cert.com)

Report No.: LCS180418047AR





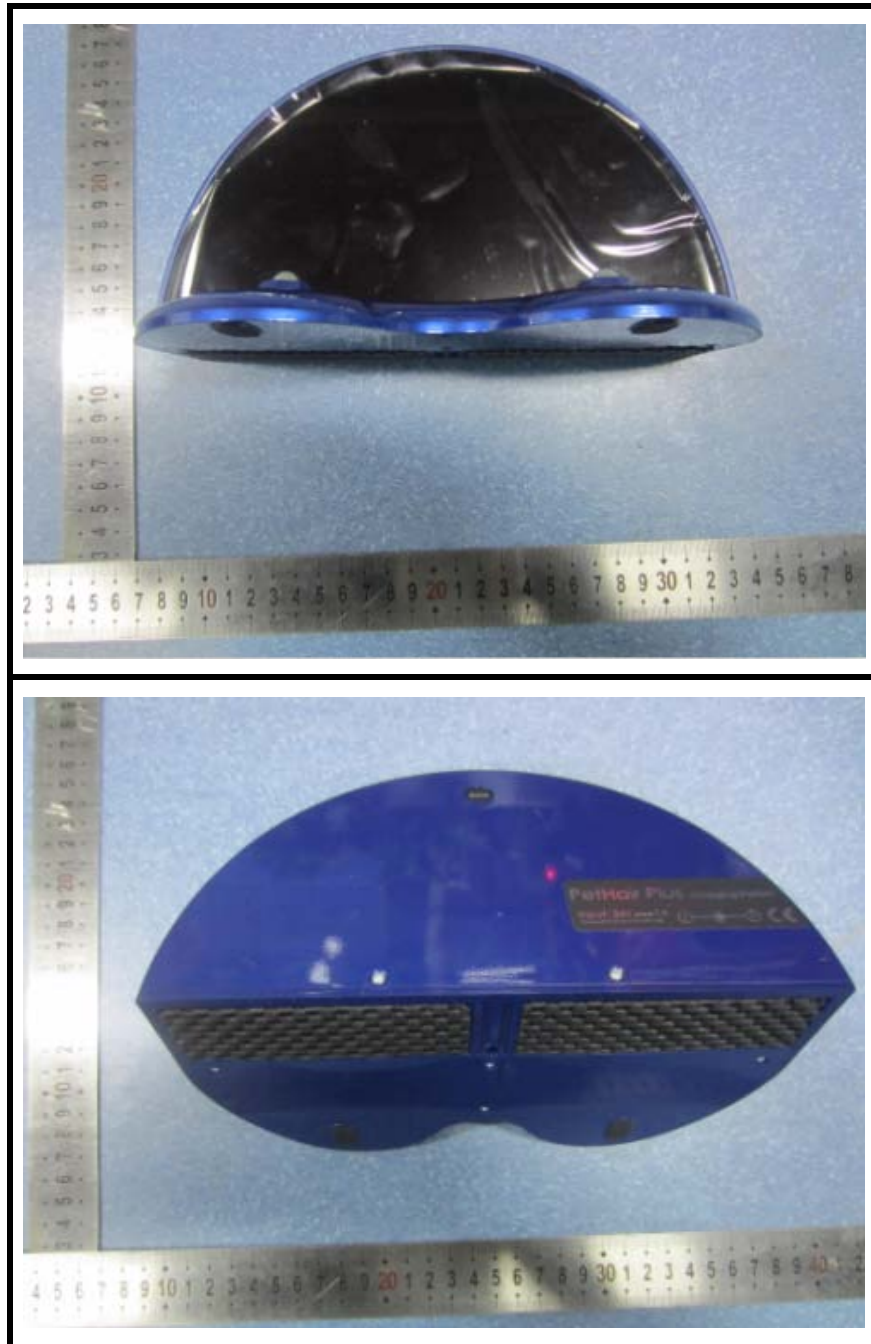
Shenzhen LCS Compliance Testing Laboratory Ltd.

Add: Unit F-G, Floor 23, Kechuang Building, Quanzhi Innovation Science and Technology Park,  
Shajing Town, Bao'an District, Shenzhen, Guangdong, China

Tel: (86)755-23353209

Internet: [Http://www.LCS-cert.com](http://www.LCS-cert.com)

Report No.: LCS180418047AR





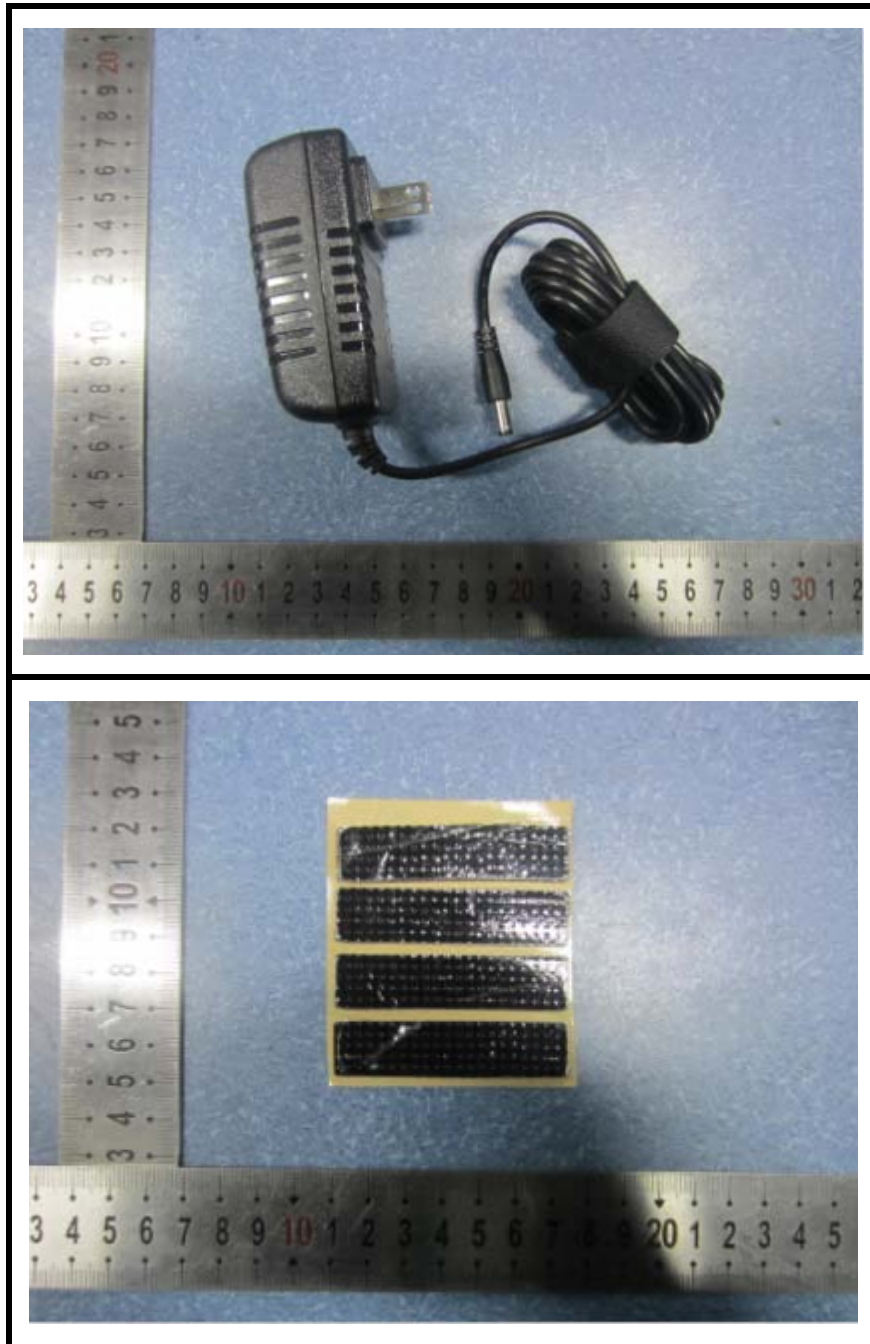
Shenzhen LCS Compliance Testing Laboratory Ltd.

Add: Unit F-G, Floor 23, Kechuang Building, Quanzhi Innovation Science and Technology Park,  
Shajing Town, Bao'an District, Shenzhen, Guangdong, China

Tel: (86)755-23353209

Internet: [Http://www.LCS-cert.com](http://www.LCS-cert.com)

Report No.: LCS180418047AR



LCS authenticate the photo on original report only  
\*\*\* End of Report \*\*\*

The test report is effective only with both signature and specialized stamp. The result(s) shown in this report refer only to the sample(s) tested. Without written approval of LCS, this report can't be reproduced except in full.