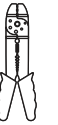
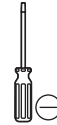
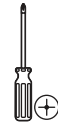




by Hukoro

TOOLS REQUIRED



If you need further assistance, please contact us by Email: customersupport@superiordecorinc.com

*** PARTS SHOWN MAY DIFFER SLIGHTLY PER LIGHT FIXTURE**

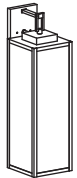
ASSEMBLY INSTRUCTIONS



CAUTION

- Inspect the wire insulation for any cuts, abrasions or exposed copper that may have resulted during shipping. If there is a defect in the wire, do not attempt installation.
- Before starting installation of this fixture or removal of a previous fixture, disconnect the power by turning off the circuit breaker or by removing the fuse at the fuse box.

HARDWARE INCLUDED



Fixture



Mounting Unit



Ball Nuts



Rubber Rings

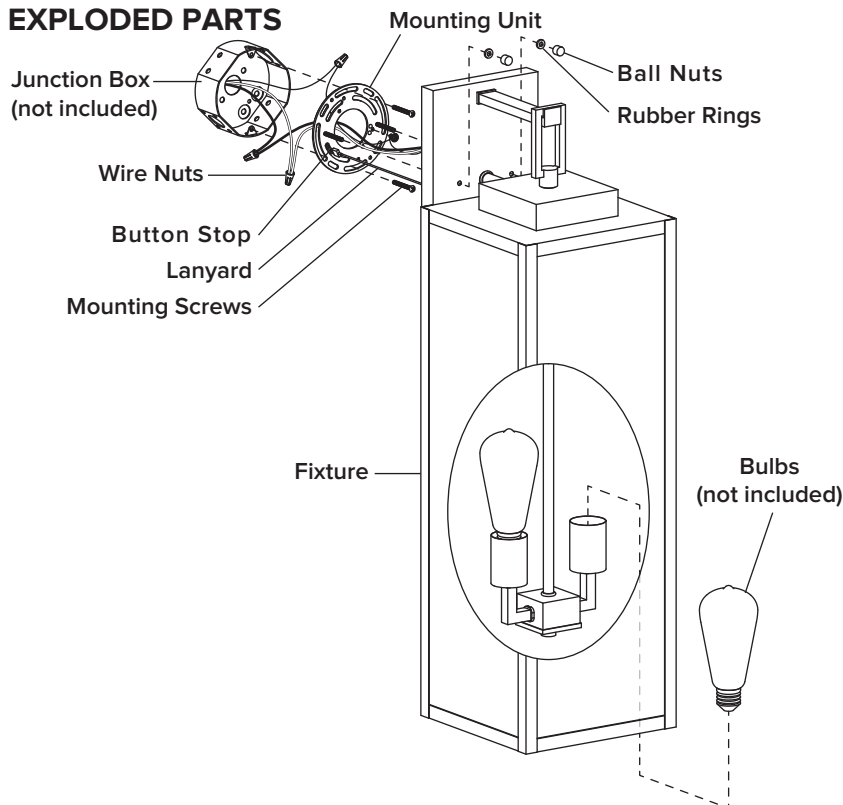


Mounting Screws



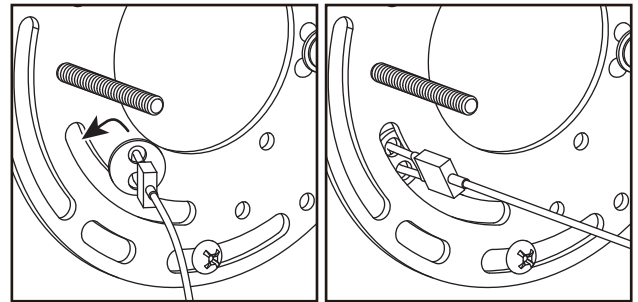
Wire Nuts

EXPLODED PARTS



STEP 2

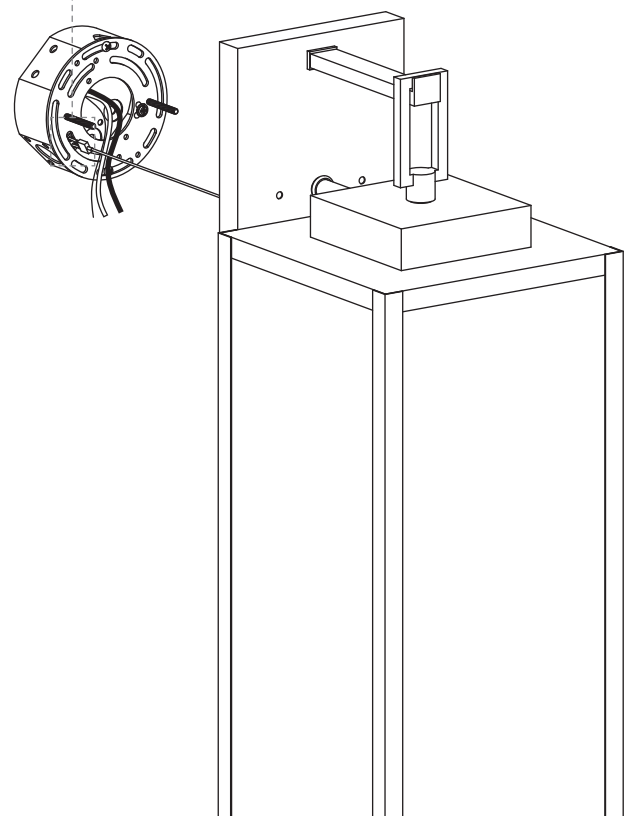
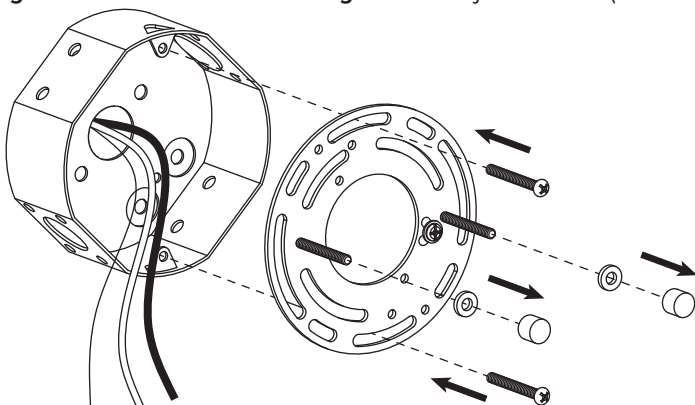
Turn the **button stop** from the **lanyard** and insert it completely inside the slot of **mounting unit**. This enables the **fixture** to hang from the **mounting unit** and your hands are free to make the wire connections.



INSTALLATION

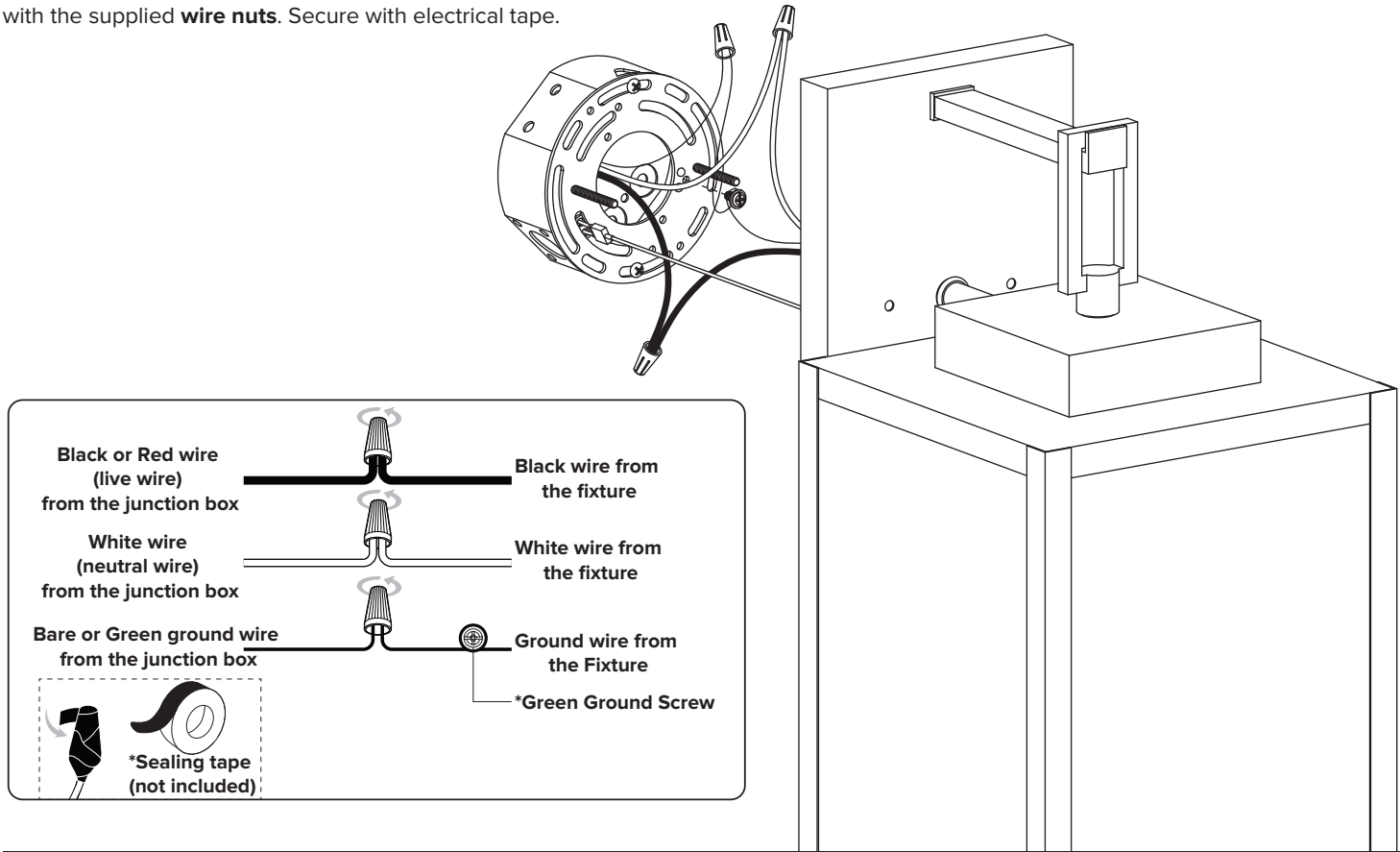
STEP 1

Unscrew the **rubber rings** and **ball nuts** from the **mounting unit**. Use the **mounting screws** to attach the **mounting unit** to the junction box (not included).



STEP 3

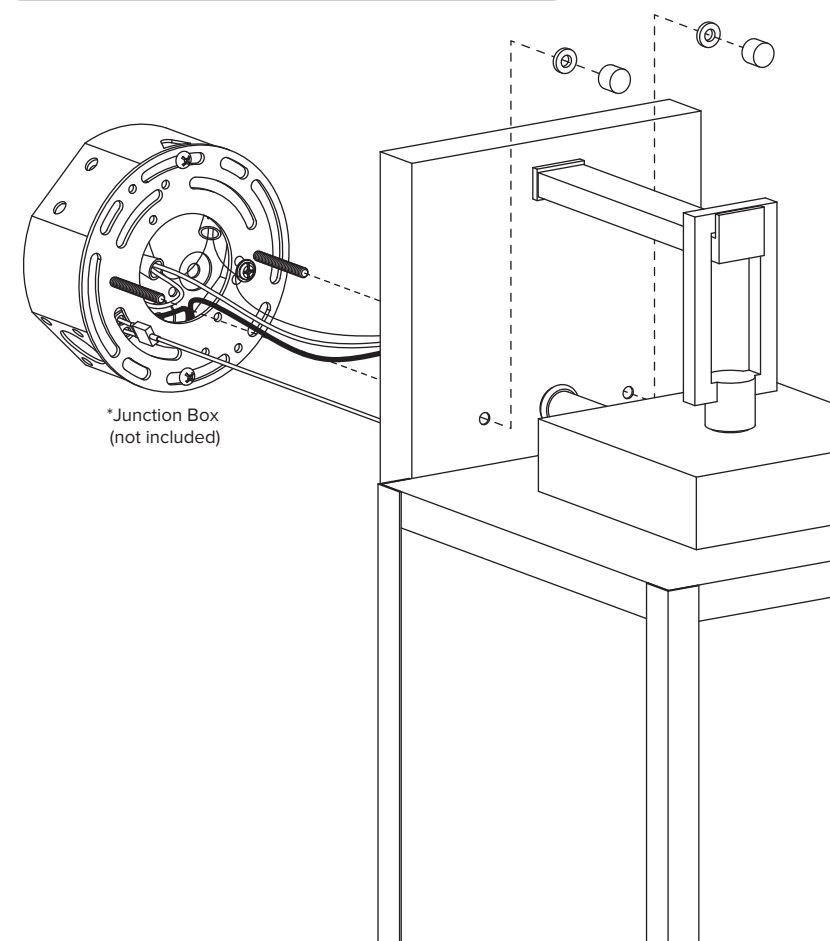
Make the electrical connection from the junction box (not included) to the **fixture**. Connect the ground wire to the **mounting unit** using the preinstalled green ground screw. Next, connect the live wire, neutral wire and ground wires with the supplied **wire nuts**. Secure with electrical tape.



STEP 4

Attach the **fixture** to the **mounting unit** through **screw holes** as shown, and secure it with **rubber rings** and **ball nuts**.

NOTICE: Please use caulk in the back plate and wall mounting surface to prevent water from entering.



STEP 5

Install bulbs (not included).

