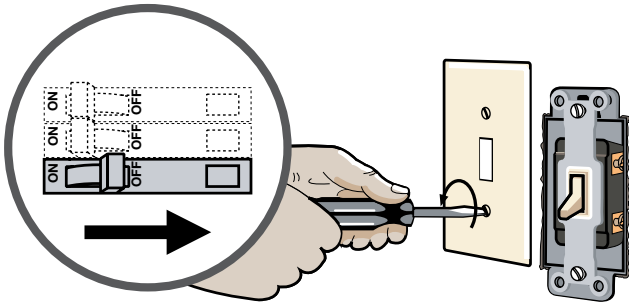
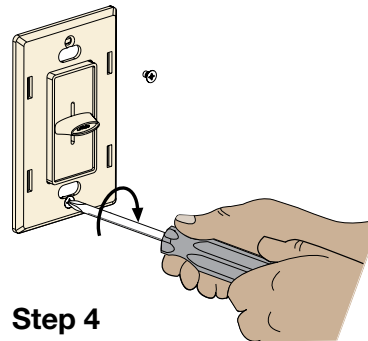


how to install (single-pole dimmer shown)



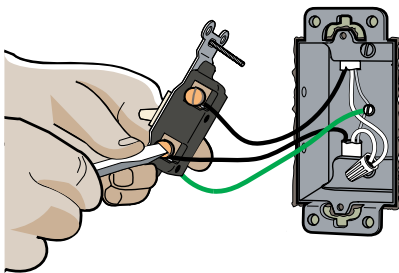
**Step 1**

Turn power OFF at breaker. Remove wallplate.



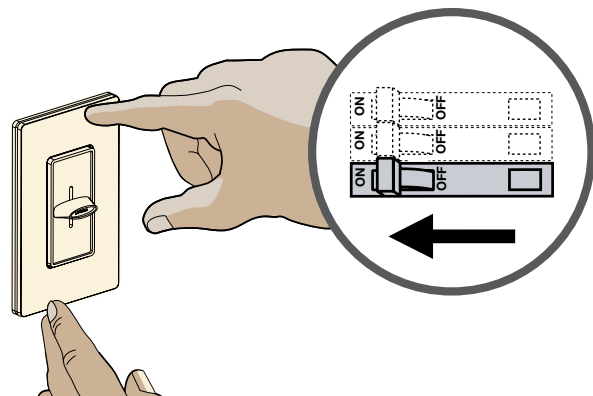
**Step 4**

Install dimmer and screw on backplate.



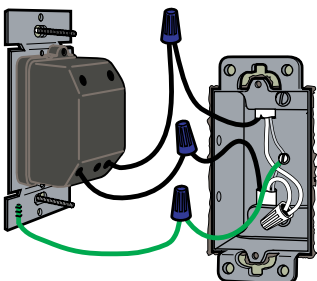
**Step 2**

Disconnect existing switch.



**Step 5**

Snap on wallplate. Restore power.



**Step 3**

Connect wires from box to dimmer.

Every dimmer is the first step in an energy-saving sustainable design.