



ITEM #0231039

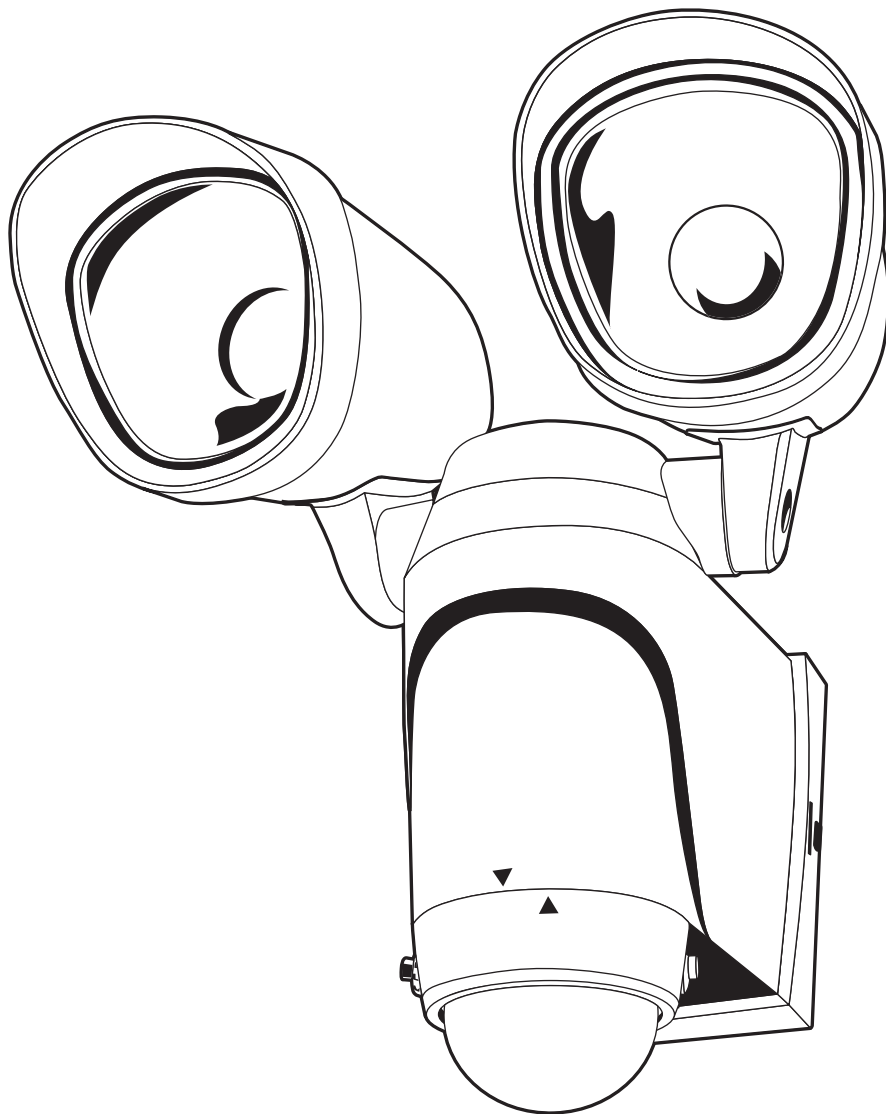
BATTERY OPERATED LED MOTION SENSOR LIGHT

MODEL #GU8002-LED-DC

Utilitech & UT Design® and Grounded in Quality® are registered trademarks of LF, LLC. All Rights Reserved.

Français p. 7

Español p. 13



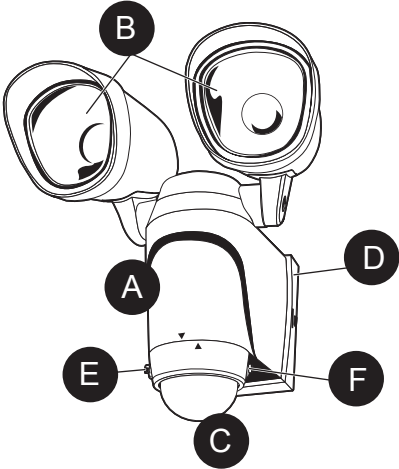
ATTACH YOUR RECEIPT HERE

Serial Number: _____ Purchase Date: _____



Questions, problems, missing parts? Contact the customer service department at 1-866-994-4148, 8 a.m. - 6 p.m., EST, Monday - Thursday, 8 a.m. - 5 p.m., EST, Friday.

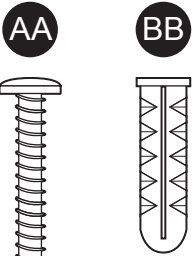
PACKAGE CONTENTS



PART	DESCRIPTION	QUANTITY
A	Fixture	1
B	Reflector Head	2
C	Motion Sensor	1

PART	DESCRIPTION	QUANTITY
D	Rear Housing Cover	1
E	Motion Sensor Control Knob	1
F	Dusk-to-Dawn Control Knob	1

HARDWARE CONTENTS (shown actual size)



Anchor
Qty. 2

Wood
Screw
Qty. 2

PREPARATION

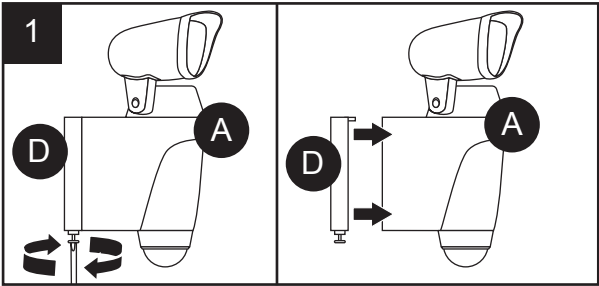
Before beginning assembly of product, make sure all parts are present. Compare parts with package contents list and diagram above. If any part is missing or damaged, do not attempt to assemble the product. Contact customer service for replacement parts.

Estimated Assembly Time: 20 minutes

Tools Required for Assembly (not included): Safety Glasses, Tape Measure, Level, Philips Screwdriver, Drill Bit, Drill, Step Ladder, Soft Cloth.

ASSEMBLY INSTRUCTIONS

1. Unscrew the rear housing cover screw at the bottom of the fixture (A), until the rear housing cover (D) comes loose. Note: the rear housing cover screw is designed as a locking screw and does not come completely out. Remove the rear housing cover (D).

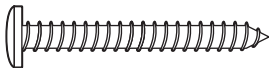
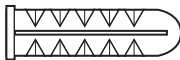


ASSEMBLY INSTRUCTIONS

2. For best results, select a site to mount the fixture 6 to 7 feet above the ground. Do not mount light near other sources of heat that lie in the detection area (i.e. dryer exhaust vents, lights, etc.) or reflective surfaces (i.e. pool water or white walls). Overhanging branches may cause false activation under extreme conditions. DO NOT mount behind a window for outdoor detection. Sensor will not detect heat or motion through glass, clear acrylic or plastic.

In order to mount the rear housing cover (D), mounting holes must be drilled out. Place rear housing cover (D) over the mounting location and mark the center of the holes to be drilled into the mounting surface. Drill a 1/16 inch pilot hole into the surface. For mounting to concrete or masonry, install the anchors (BB), by drilling two 3/16-in. pilot holes into the surface. Insert the anchors (BB) into the holes and tap them into place so they are flush with the surface. Fasten rear housing cover (D) to mounting surface with wood screws (AA).

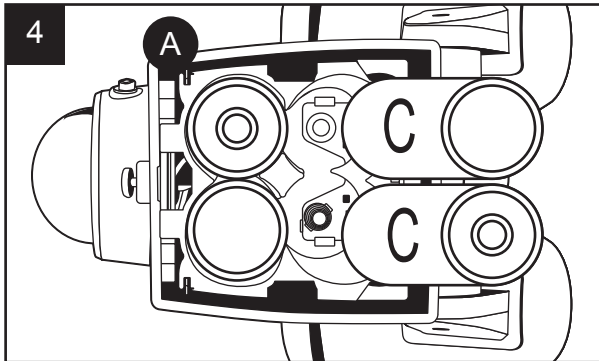
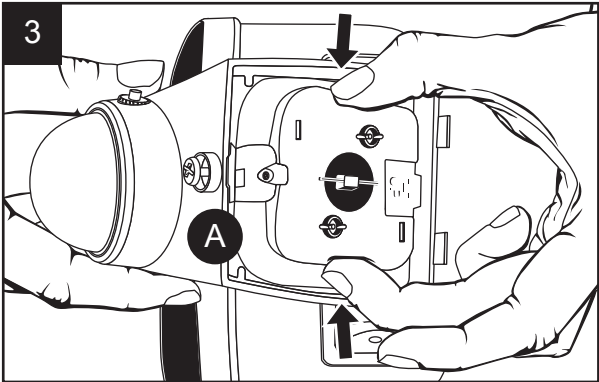
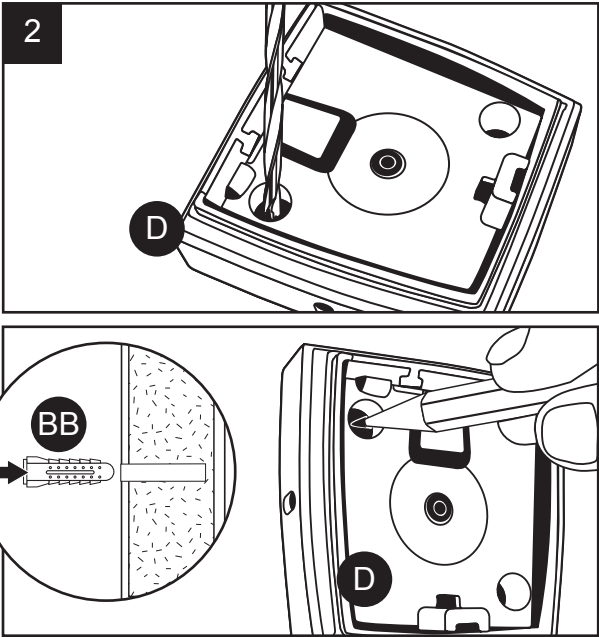
Hardware Used

AA	Wood Screw		x 2
BB	Anchor		x 2

3. Remove the battery compartment door on the fixture (A) by grasping the catches located on the right and left sides of the door, and squeeze together until the catches release the door from the fixture (A).

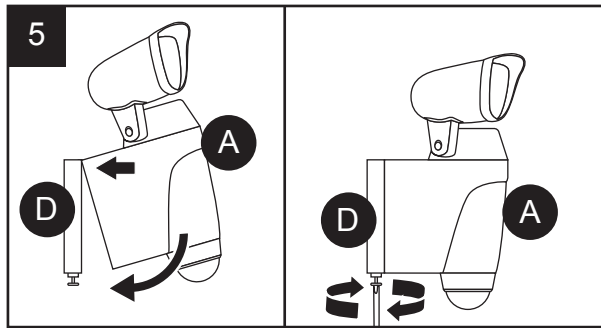
4. Insert 4 new alkaline C cell batteries (not included) into the battery compartment according to the "+" and "-" markings at the bottom of the battery compartment. Cold weather can have a negative impact on battery life. Do not mix old and new batteries.

Re-attach the battery compartment cover by pressing the cover down over the battery compartment until the cover "clicks" into place. Note: Batteries will not make proper contact if the battery compartment cover is not attached correctly.



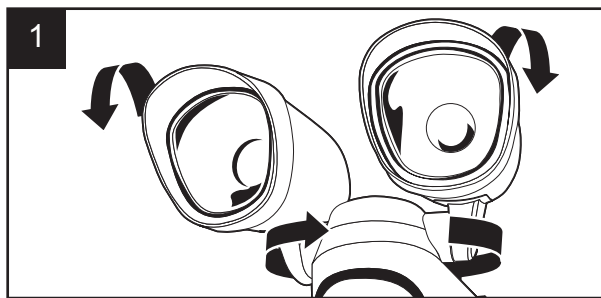
ASSEMBLY INSTRUCTIONS

5. Re-attach the LED security light body to the mounted rear housing cover (D) by angling the bottom away from the mounted rear housing cover (D) and engaging the two (2) tabs at the top rear edge of the fixture (A) into the corresponding openings in the rear housing cover (D). Once engaged, angle the bottom of the fixture (A) back toward the rear housing cover (D) and press it against the rear housing cover (D). While holding it in place, re-tighten the bottom screw on the fixture (A) until it engages with the rear housing cover (D), and holds the fixture (A) in place.

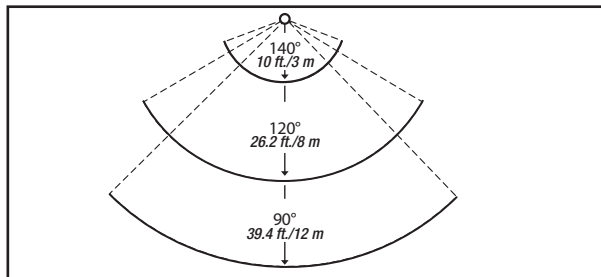
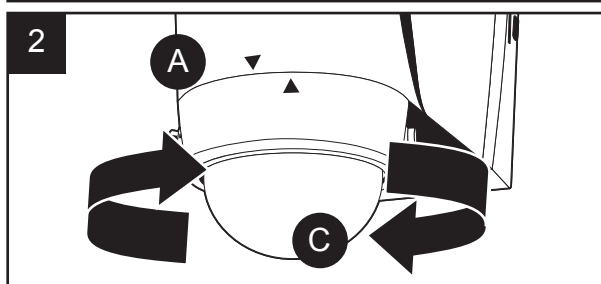


OPERATING INSTRUCTIONS

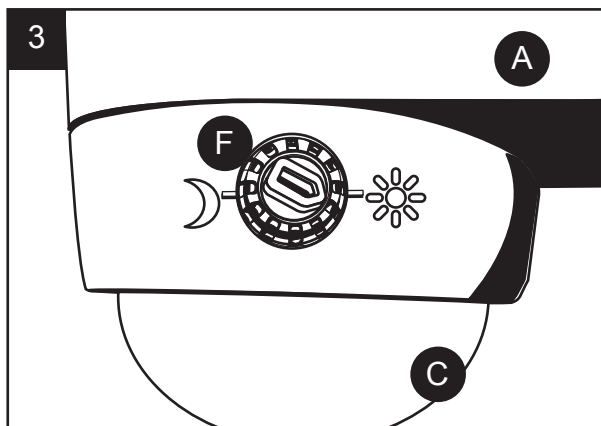
1. The individual reflector heads (B) can be adjusted side to side and up/down independently to aim the light(s) in the direction desired. If over time, the up/down adjustment tension weakens, the hinging action can be tightened by tightening the screw located below each head.



2. The motion sensor (C) can be rotated to position detection field in the direction of an area to be covered. If the 2 arrow indicators are aligned, the motion sensor (C) is focused straight ahead. The motion sensor (C) can be rotated approximately 45 degrees right or left of center to more precisely focus on a coverage area. The sensor uses passive infrared technology to detect heat radiation of moving bodies. The motion sensor has a maximum detection field of 140° at a distance of 10 feet, 120° at a distance of 26 feet and 90° at a distance of 39 feet.



3. A built in dusk-to-dawn sensor prevents the fixture (A) from turning on during the day. The sensitivity of this sensor can be adjusted by rotating the control knob on the right side of the sensor lens. Rotating the knob clockwise toward the sun symbol will decrease the sensitivity to light, and allow the security light to come on during while it is still light out. Rotating the knob counter-clockwise toward the crescent moon symbol increases the sensitivity to light, and allows the security light to come on only at night. Setting the knob somewhere in between adjusts the photo sensor's sensitivity to outside light, and is used to trigger the sensor at different light levels.



OPERATING INSTRUCTIONS

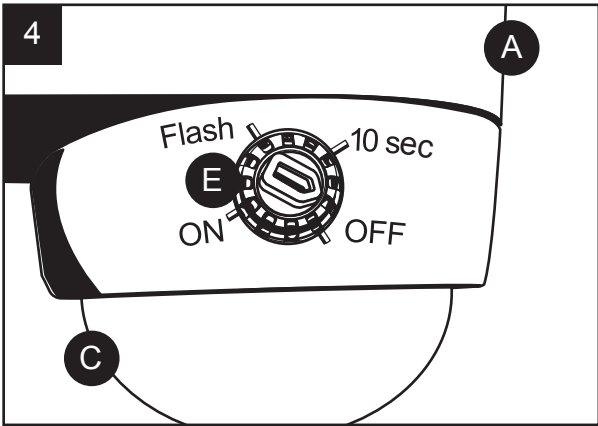
4. The motion sensor feature can be adjusted using the knob on the left side of the light. There are four (4) settings:

ON- Allows the lights to stay on indefinitely. This setting should also be used to check the status of the batteries. If the lights do not come on when set to the ON position, the batteries need to be replaced. Operating in this mode will deplete batteries quickly.

FLASH- Allows the lights to flash (ON and OFF) when motion is sensed, and continue to flash until the security light no longer senses motion. Note: A flashing light is more likely to be noticed by neighbors and attract attention. The lights will turn off approximately 10 seconds after motion is no longer detected.

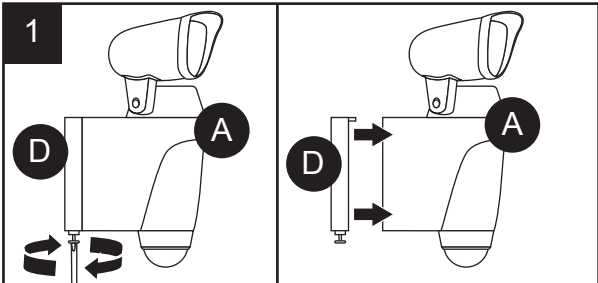
10sec- Allows the lights to come on for 10 seconds when motion is sensed.

OFF- Disables the lights.

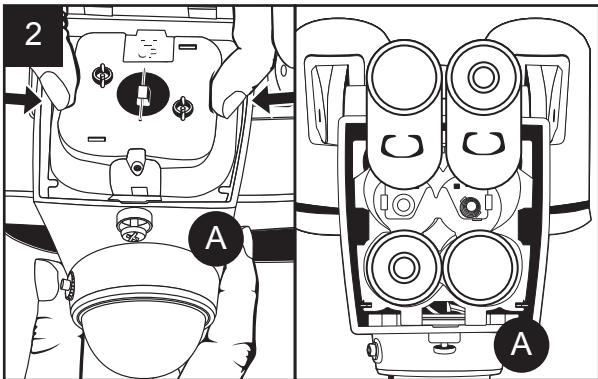


BATTERY REPLACEMENT INSTRUCTIONS

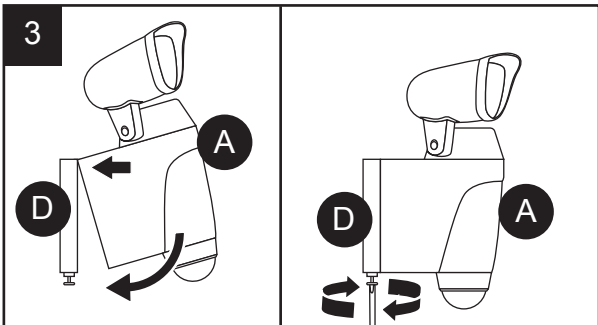
1. Unscrew the rear housing cover screw at the bottom of the fixture (A) until the fixture (A) comes loose. Tilt the bottom edge of the fixture (A) upward until it disengages along the top edge. Remove the fixture (A) from the rear housing cover. Note: the screw does not fully come out of the opening.



2. Remove the battery compartment door on the fixture (A) by grasping the catches located on the right and left sides of the door, and squeeze together until the catches release the door from the fixture (A). Insert 4 new alkaline C cell batteries into the battery compartment according to the "+" and "-" markings at the bottom of the battery compartment. Do not mix old and new batteries. Re-attach the battery compartment door by snapping it back into place using both thumbs to press it down onto its catches. The door will "click" into place. Make sure it is secure, as the batteries will not make proper contact if this battery door is not on properly.



3. Re-attach the fixture (A) to the mounted rear housing cover by angling the bottom away from the mounted rear housing cover (D), and engaging the two (2) tabs at the top rear edge of the fixture (A) into the corresponding openings in the rear housing cover (D). Once engaged, angle the bottom of the fixture (A) back toward the rear housing cover (D), and press it against the rear housing cover (D). While holding it in place, re-tighten the bottom screw on the fixture (A) until it engages with the rear housing cover (D), and holds the fixture (A) in place.



CARE AND MAINTENANCE

You may want to periodically clean the fixture using a mild, non-abrasive glass cleaner and soft cloth. Do NOT use solvents or cleaners containing abrasive agents. When cleaning the fixture, make sure you have the power turned off and do not spray liquid cleaner directly onto the bulb, socket, ballast, or wiring.

TROUBLESHOOTING

Minor problems often can be fixed without the help of an electrician. Before doing any work on the fixture, shut off power supply at the circuit breaker panel to avoid electrical shock.

PROBLEM	POSSIBLE CAUSE	CORRECTIVE ACTION
Fixture doesn't light.	1. Batteries are defective. 2. Battery compartment cover is loose. 3. Batteries installed wrong.	1. Replace batteries. 2. Check battery compartment cover. 3. Install batteries correctly.
Light flickers on and off.	1. Photo sensor is picking up extraneous light.	1. Reset photo sensor settings.
Fixture on all night.	1. Heat source in detection area. 2. Reflective body in detection area.	1. Remove heat source or move fixture. 2. Remove reflective body or move fixture.
Motion sensor activates at random or for no reason.	1. Minor sensor problem. 2. Momentary heat source or reflective body.	1. Remove batteries to reset sensor. 2. Turn sensor detection field away from source.
Motion sensor does not activate at all.	1. Depleted batteries. 2. Setting has been set to "OFF."	1. Check or replace batteries. 2. Check setting.
Motion sensor activates during daylight.	1. Dusk-to-Dawn setting is set incorrectly.	1. Adjust Dusk-to-Dawn setting.
Detection range varies from day to day.	1. Changes in meteorological conditions.	1. Adjust sensor's position.

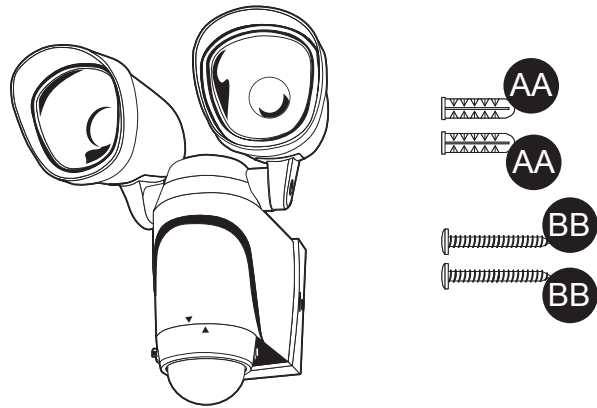
WARRANTY

The manufacturer warrants this lighting fixture to be free from defects in materials and workmanship for a period of (3) years from the date of original purchase by the consumer. We will repair or replace (at our option) the unit in the original color and style if available, or in a similar color and style if the original item has been discontinued, without charge. The manufacturer warrants the lamp for 3 years, providing the lamp is not used in a commercial application where it is on 24 hours per day, but is used in a residential environment for 3 - 5 hours per day. Defective units must be properly packed and returned to the manufacturer with a letter of explanation and your original purchase receipt showing date of purchase. **Call 1-866-994-4148** to obtain a Return Authorization number and an address where to ship your defective product. Note: No C.O.D. shipments will be accepted. The liability of the manufacturer is in any case limited to replacement of the defective light fixture product. The manufacturer will not be liable for any other loss, damage, or injury which is caused by the product. This limitation upon the liability of the manufacturer includes any loss, damage, or injury which is (I) to person or property or otherwise; (II) incidental or consequential in nature; (III) based upon theories of warranty, contract, negligence, strict liability, tort, or otherwise; or (IV) directly, or indirectly related to the sale, use, or repair of the product. This warranty gives you specific rights, and you may also have other rights which vary from state to state.

REPLACEMENT PARTS LIST

For replacement parts, call our customer service department at 1-866-994-4148, 8 a.m. - 6 p.m., EST, Monday - Thursday, 8 a.m. - 5 p.m., EST, Friday.

PART	DESCRIPTION	PART #
AA	Wood Screw	HDW8002
BB	Anchor	HDW8002



Printed in China

Utilitech & UT Design® and Grounded in Quality® are registered trademarks of LF, LLC. All Rights Reserved.