

## INSTALLATION HIGHLIGHTS • 440 SOUND BARRIER WALLS AND CEILING



*Sensible. Sound.  
Solutions.*



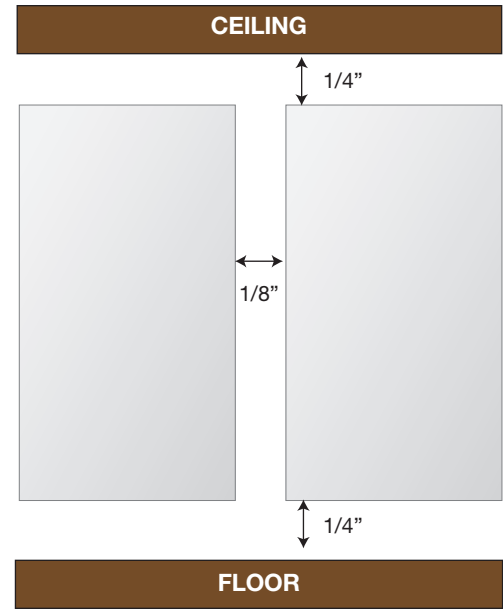
The mark of  
responsible forestry



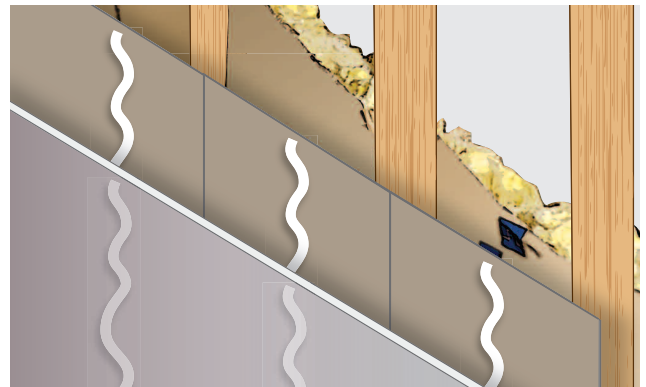
**1 Acclimate materials** – Make sure you place the material in the location in which they will be installed for at least 24 hours prior to installation.



**3 Attach 440 SB,** with either nails or screws, that penetrate the studs 3/4" of an inch. The fasteners should be 3/8" of an inch off of the board edge spaced 12" apart around the edges and 24" apart in the field of the board.



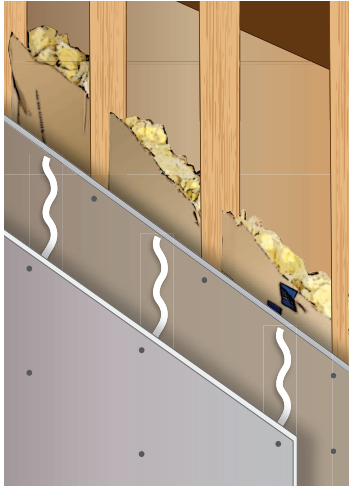
**2** Position the 440 SB on the studs allowing for a **1/8" gap between sheets** and a **1/4" gap at the floor and ceiling**.



**4 Apply 3/8" bead of adhesive** to gypsum wallboard that meets the specification APA AFG-01 (such as Liquid Nails or PL400) in single verticle beads that are in between the studs.

[www.homasote.com](http://www.homasote.com)

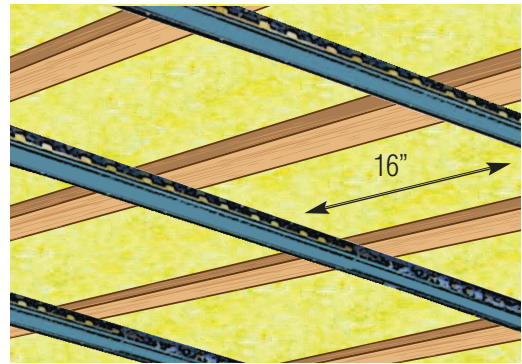
## INSTALLATION HIGHLIGHTS • 440 SOUND BARRIER WALLS AND CEILING



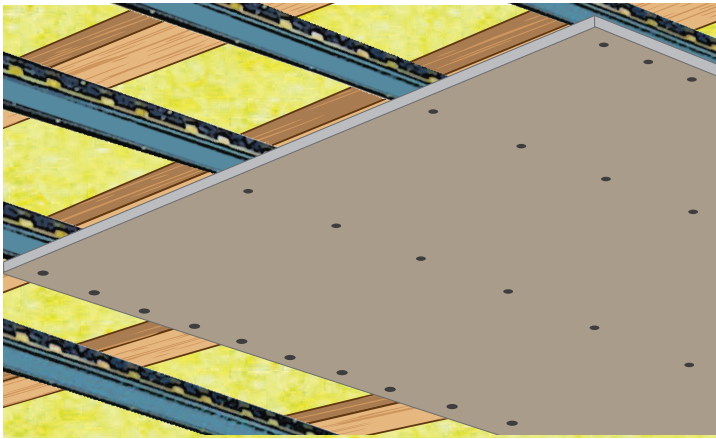
**5** Apply gypsum wallboard staggering the joints so the edges do not fall onto studs and fasten to the 440 SB panel only (not through the studs) using #10 1-1/2" laminating screws (rock to rock screws).

• End of wall installation

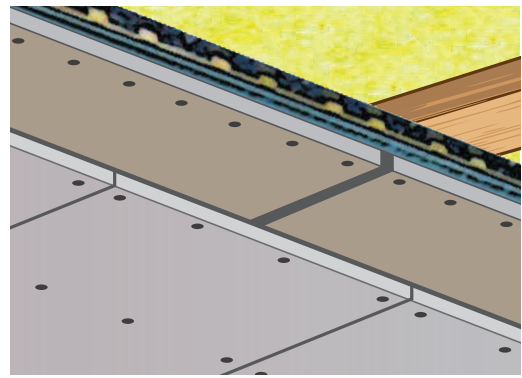
### CEILING



**1** Install resilient channels (or equal), spaced a maximum 16" o.c., to ceiling joists. Use sufficient length screws to penetrate into the ceiling joists a minimum of 3/4".



**2** Screw Homasote panels using standard drywall screws directly into resilient channels 4" - 6" o.c. along panel edges and 10" - 12" o.c. at intermediate supports. Allow for 3/16" expansion joint at all panel edges.



**3** Gypsum wallboard is to be installed, **staggering all seams**, over the Homasote panels and **screwed into the resilient channels** as per gypsum wallboard manufacturer's installation instructions.

Please see our complete installation instructions for further details.

**440** SoundBarrier®

**HOMASOTE®**

Sensible. Sound.  
Solutions.



800-257-9491 • Technical Support call Ext. 1332 or e-mail [techhelp@homasote.com](mailto:techhelp@homasote.com)

[www.homasote.com](http://www.homasote.com)