



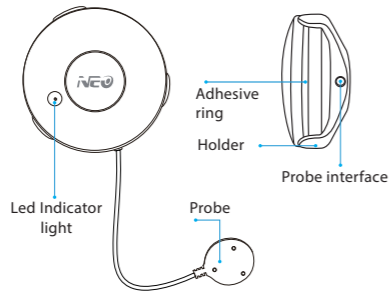
# WI-FI SMART HOME INSTRUCTION

## WATER SENSOR



SHENZHEN NEO ELECTRONICS CO.,LTD

### Product configuration



### Main Function:

Detect water leakage

### Specifications

- Battery: CR2 x 1
- Standby current: 10uA
- Standby time: 5 years
- Use time: 4 years (2 times/month)
- Wireless Type:2.4GHz
- Protocol:IEEE 802.11b/g/n
- Wireless Range: 45m
- Operating Temperature:0 C ~ 40 C (32°F~104°F)
- Operating Humidity: 20% ~ 85%
- Storage Temperature:0 C ~ 60 C (32°F ~ 140°F)
- Storage Humidity:0% ~ 90%
- Protection grade: IP67
- Size:67mm x 67mm x 24mm



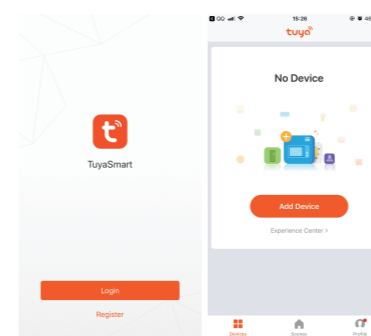
### Download App

- 1.Android phone: download "TuyaSmart" from GooglePlay.
- 2.Iphone :download "TuyaSmart" from App Store.



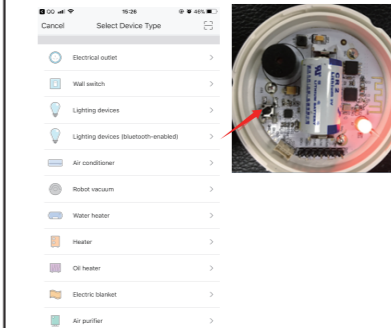
### Add Device

- 1.Run "TuyaSmart"from you smartphone desktop.
- 2.Register and login



### Water Sensor :

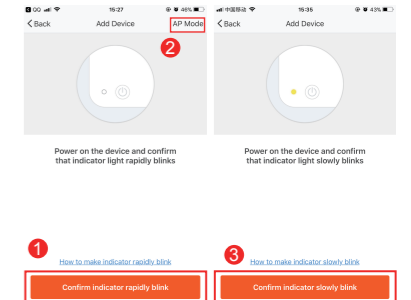
Select Device Type,select"Other products"or any type in the list to add the device.



### Network Configuration

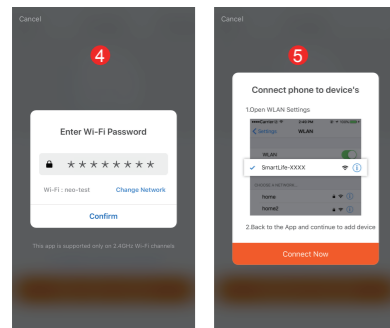
#### 1.Smart WiFi: (step1 ,4)

Press and hold the reset button for 6s, the indicator will blink rapidly. The device is in smart Wi-Fi mode.



#### 2.Ap Mode: (step2-5)

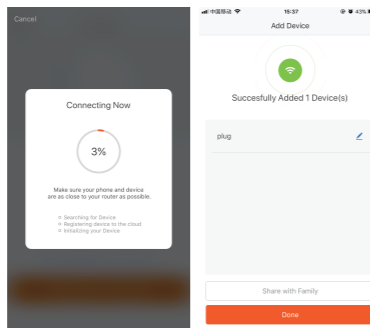
Press the device reset button again, then the indicator will blink slowly. The device is in AP mode. After you enter WiFi password ,it will be "Connect phone to device's",then click "Connect Now")



Enter WiFi password

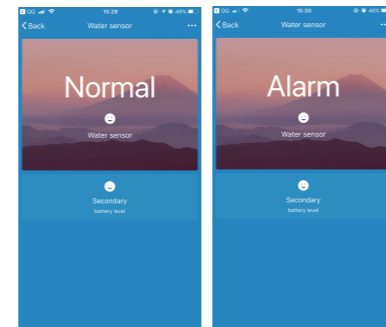
Connect phone to device's

Connecting :



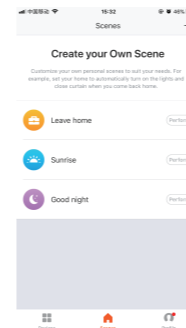
Finished.

### Alam Status:



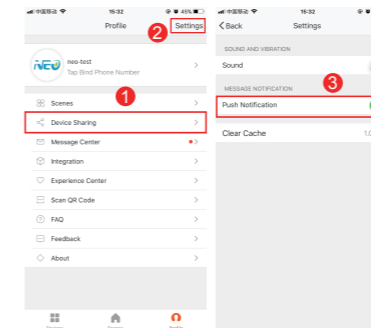
### Customize Scenes

associate two devices to work to create your own scene



### Share & Push Notification

Share: Share your devices to others directly . (step 1)



Push Notification: Settings---Push Notification. (step2,3)

### LED State

Device Status	LED State
Smart Wi-Fi	Red LED will rapidly blink
AP mode	Red LED will slowly blink
Alarm	Led will rapidly blink for 3 times (alarm will ring 3 times), then rapid blinking cyclically after slowly blink for 1 time(Alarm rings accordingly )
Reset	LED will be on for 4s then OFF, and it will ready for configuration after 3s Led will rapidly blink(the first time reset) or slowly blink(the second time reset)



Make Your Home Smarter



For more products please visit [www.szneo.com](http://www.szneo.com)