



**Ivation® Propane Torch**  
SKU: IVAPROTORCH2

**User Guide**



Thank you for purchasing the Ivation® Propane Torch. This User Guide is intended to provide you with guidelines to ensure that operation of this product is safe and does not pose risk to the user. Any use that does not conform to the guidelines described in this User Guide may void the limited warranty.

**Please read all directions before using the product and retain this guide for reference.** This product is intended for domestic, outdoor use only.

This product is covered by a limited one-year warranty. Coverage is subject to limits and exclusions. See warranty for details.

PLEASE THOROUGHLY READ ALL SAFETY PRECAUTIONS BEFORE USING TORCH: Operation instructions can be found on page 8.

**DANGER: EXTREMELY FLAMMABLE. CONTENTS UNDER PRESSURE.**

- Don't use this torch until you thoroughly read and understand all of the operation instructions and warnings. Deviating from these instructions could result in fire, explosions, property damage, and/or operator injury. Don't try to operate this device without reading the instructions.
- **Don't ever operate this torch if:**
  - You are subject to seizures, loss of consciousness, or fainting
  - You have been drinking alcohol, using drugs, or taking prescription medication that could affect your judgment or balance
  - You have not read or do not understand the user guide
  - You are not capable of safely operating this type of equipment
- Make sure to familiarize yourself with the appliance itself before using it.
- Don't use any fuel other than propane with this torch, or else it could result in fires, explosions, property damage, and/or operator injury.
- Always close the torch valve and wait for the torch to cool down before tightening or removing the torch head, and before installing or removing accessories. Failure to do so could result in severe burns.
- Before using this appliance, check all the parts to make sure they function properly, and make sure no components have been damaged.
- Keep the torch out of the reach of children. Do not allow children to operate this equipment.
- Always keep away from heat or flame, and avoid prolonged exposure to sunlight.
- Disconnect the propane cylinder when this torch is not in use. Never store the torch while it's attached to a propane tank.
- Do not store the torch and/or propane tank near heat or in a room used for habitation.
- Don't use this torch to heat, mold, or bend plastic sheets, molding, or tubing.
- Don't use this torch to remove paint.
- Never point the torch toward your face, other people (or their faces), animals, or any other flammable objects/persons. Please never attempt to use this torch as a cigarette lighter.
- Do not attach or detach the torch from the gas cylinder in an area

where accidentally released gas might be ignited by open flames.

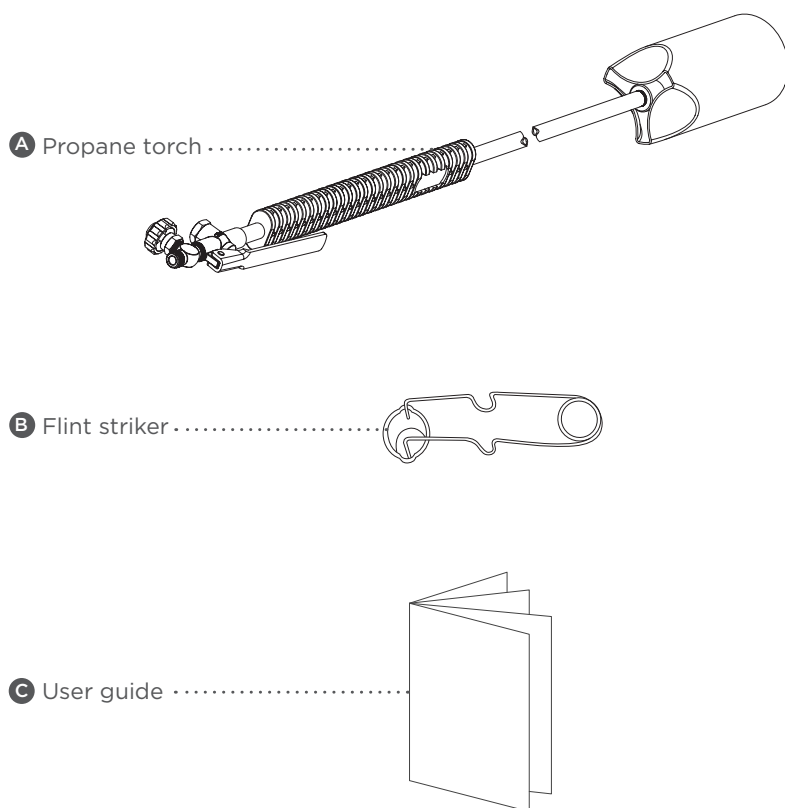
- Never attempt to modify the torch construction and never use unapproved fuel, or else it could result in fires, explosions, property damage, and/or operator injury.
- Don't use a leaking, damaged, or malfunctioning torch.
- Treat this torch as you would any fine tool or instrument. If it's ever damaged, don't use it until you have ensured the problem is fixed.
- Torches improperly operated, maintained, or repaired are dangerous! Improper use, service repair, or modification of the torch could result in damage to the product, property damage, or personal injury to the operator.
- When the gas cylinder is empty, dispose of it properly in a safe and approved location. Do not throw the cylinder into a fire, puncture, or incinerate it.
- It is illegal and dangerous to refill the propane gas tank on your own. Obtain a new propane cylinder from an authorized retailer.
- Do not inhale gas, fumes, vapor, or spray from the propane cylinder or torch, and avoid contact with skin and eyes. If inhaled, immediately move the affected person to fresh air. For skin contact, flush with lots of water. In case of eye contact, rinse immediately with plenty of water and then seek medical advice.
- Ordinary brick and concrete can explode when subjected to high temperatures. Do not work on wood or metal surfaces with this product. Always shield your work.
- Always wear protective glasses and gloves. Use proper tools to handle hot work. Always have an ABC-type fire extinguisher and a bucket of water near your torch and work area.
- Only use this torch in well-ventilated areas. Propane is heavier than air, which can cause it to accumulate in low areas.
- Hidden areas such as those behind walls, ceilings, floors, soffit boards, and other panels may contain flammable materials that could be ignited by the heat gun when working in these locations. The ignition of these materials may not be readily apparent and could result in property damage and injury to persons.
- When working in locations that could have hidden areas/flammable materials behind them, keep the torch moving in a back-and-forth motion. Lingering or pausing in one spot could ignite the panel or the material behind it.

# TABLE OF CONTENTS

INTRODUCTION .....	2
SAFETY PRECAUTIONS .....	3
TABLE OF CONTENTS .....	5
PACKAGE CONTENTS/ PRODUCT OVERVIEW.....	6
SAFETY CHECKLIST .....	7
CHECKLIST & CONNECTION .....	8
LIGHTING THE TORCH .....	9
REGARDING COLD WEATHER OPERATION .....	10
SHUTOFF INSTRUCTIONS .....	11
REMOVING THE PROPANE CYLINDER .....	12
CARE AND MAINTENANCE .....	12
CONTACT US .....	13

## PACKAGE CONTENTS

- A** Propane torch
- B** Flint striker
- C** User guide



- Use gloves at all times when operating this appliance. We recommend wearing long sleeves, long pants, and boots.
- Use only vapor torches with cylinders equipped with vapor withdrawal valves.
- Secure propane cylinders in a level, upright position. Do not turn them upside-down or lay them on their sides.
- Never use a flame to check for leaks on cylinders or to increase gas pressure.
- Keep torches, open flames, and any other heat sources that might cause ignition away from gas cylinders, regulators, and/or the hose.
- Don't operate torches or any equipment if the odor of propane gas is evident. Immediately shut off all valves and use soapy water to check for leaks.
- Gas cylinder valves must be protected at all costs. Do not lift a gas cylinder by the valve.
- Don't leave the torch unattended while in operation.
- Don't stand or prop the torch up on the burner end while it is in operation.
- Only use this product outdoors in a well-ventilated area.
- Make sure to have an ABC-type fire extinguisher nearby and accessible to the person operating the torch at all times.

NOTE: This torch is designed only to combust vapor-fuel output from an approved propane gas cylinder. Do not attempt or allow usage of liquid fuel to feed the burner head.

#### IF YOU SMELL GAS:

1. IMMEDIATELY shut off gas to the device.
2. Extinguish any open flames.
3. Check the device and cylinder connections for leaks using soapy water.
4. DO NOT attempt to relight the device or create any additional sparks/flames until all leaks are repaired and you no longer smell gas. If you are unsure, ask someone else to smell and confirm they don't smell gas either.

DO NOT use this device in areas where gasoline or any other liquids with flammable vapors are used or stored.

# DAILY EQUIPMENT CHECKLIST

- Visually inspect all parts of the torch equipment for any signs of damage and/or wear. If you see any excessive abrasion or wear on the hose, or the hose has been cut/torn anywhere, you will need to replace it before you use the torch. The hose should be replaced with a test laboratory listed propane hose with a working pressure of 350 PSI.
- Use a soapy water solution to check all connections and fittings for leaks. DO NOT USE A MATCH OR OPEN FLAME TO TEST FOR LEAKS.
- Check your propane cylinders for dents, damage to the collar, damage to the valve, or a corroded foot ring. Never use a damaged cylinder. Make sure you know that your propane is a vapor withdrawal fuel and not liquid withdrawal. ONLY VAPOR-WITHDRAWAL CYLINDERS MAY BE USED WITH THIS TORCH.
- Light the torch, and check the operation of valves and other adjustable parts.

NOTE: When extinguishing the torch, make sure to shut off the propane cylinder valve first, and allow gas to burn out of the lines.

## CONNECTING THE TORCH TO THE PROPANE CYLINDER

- 1 This torch should only be used with a propane cylinder tank with no less than a 20 lb. capacity, which must be designed, fabricated, tested, and marked in accordance with regulations of the US Department of Transportation, Canadian Transport Commission, or the Interstate Commerce Commission.
- 2 Thoroughly examine the nut/nipple of the P.O.L. connection on the propane gas hose. Check for any dents or physical damage to the nut/nipple, and make sure the O-ring is present on the nipple fitting. If you see any damage to the nut/nipple, call a service provider for replacement parts.
- 3 Before installing the torch on the gas cylinder, make sure the



valve is OFF by turning the gas adjustment knob in a clockwise direction until it's securely hand-tightened. **DO NOT FORCE IT.** Remove the protective plastic plug from the cylinder valve outlet connection.

- 4 Connect the P.O.L. nut/nipple fitting on the hose to the propane cylinder, and turn the cylinder counter-clockwise into the torch valve body until securely hand-tightened and attached to the torch connection. Use a wrench to make sure the connection is snug. Do not force it. Check the connection to ensure there are no leaks.
- 5 Slowly open the valve. Check all propane gas connections for leaks using soapy water or a similarly suitable leak-detection solution. Do not use matches or an open flame to check for gas leaks. Do not attempt to operate the torch if there is any evidence of a leak or if you detect the odor of gas at any time.

## LIGHTING THE TORCH

**IMPORTANT:** The P.O.L. propane connector contains an integral flow-check valve. Opening the propane gas cylinder valve too quickly can cause the valve to check, halting the flow of gas. If this happens, close the propane gas cylinder valve, wait 10-15 seconds, and then slowly open the propane gas cylinder valve. Always check for leaks before proceeding to lighting the torch. Only light the torch if no leaks are found.

Always use a flint lighter to ignite the torch.

**NEVER USE MATCHES OR A CIGARETTE LIGHTER TO LIGHT THE TORCH.** This could result in moderate-to-severe burns, other injury, explosions, and/or death.

Make sure that the flame adjustment valve is closed before you open the propane gas cylinder valve.

1. Close all valves.
2. Slowly open the propane cylinder valve.
3. Point the torch away from any person(s), animals, and/or other flammable materials. (Reminder: please do not use the torch in the proximity of flammable vapors.)
4. Open the flame adjustment valve about 1/8 of a turn, or until a small hissing sound is heard when you press the safety lever valve.
5. Use the included flint striker to ignite the torch. **DO NOT USE MATCHES OR A CIGARETTE LIGHTER.**
6. If the gas shows signs of restricted flow, the excess flow adapter may have activated. To reset it:

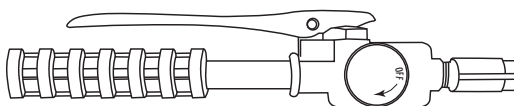
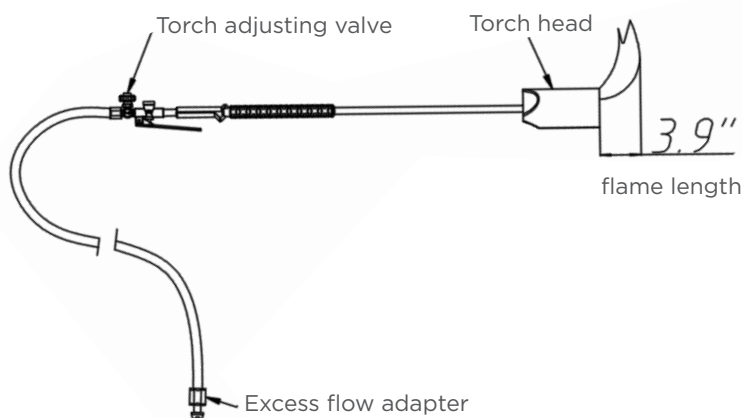
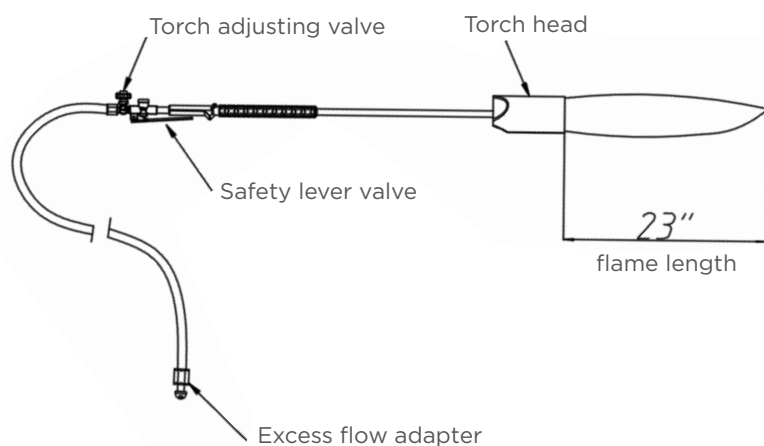
- a. Release the safety lever valve.
  - b. Close the flame adjustment valve and cylinder valve.
  - c. Press the safety lever valve to bleed off any residual pressure, then release it.
  - d. Wait 10-20 seconds.
  - e. Open the cylinder valve slowly, and do the same with the flame adjustment valve. Press the safety lever valve and reignite.
  - f. If the torch still does not operate properly, turn all the valves off and check the propane tank to make sure it is not empty and has enough propane. If the tank is not empty, has sufficient propane, and the torch still doesn't work, contact Ivation® customer care.
7. Use the flame adjustment knob to control the flame intensity. Please note, you can press the safety lever valve to create a much larger "super flame", but with great power comes great responsibility, so be cautious while using the super flame. Make sure to follow all safety precautions while you work.

## REGARDING COLD WEATHER OPERATION

In cold weather, the size of the flame might be smaller due to lower gas pressure. To produce a larger flame, you can pre-warm the gas cylinder by bringing it inside or wrapping it in a blanket until it reaches room temperature prior to use. (Do not use a heater or an open flame to warm the cylinder.) Shaking the gas cylinder a few times to warm the fuel up will also help. There is a possibility that the flame will extinguish in cold weather conditions.

# SHUTOFF INSTRUCTIONS

1. Release the safety lever (if needed) to reduce the flame from super back to a normal, smaller size.
2. Turn the propane gas cylinder valve so that no more gas is escaping the cylinder. The flame may continue for a short amount of time but should extinguish quickly.
3. Once the flame is no longer visible, turn the flame adjustment valve to the closed/OFF position.



# REMOVING THE PROPANE CYLINDER

1. Make sure that the propane cylinder is turned off.
2. Disconnect the P.O.L. nut/nipple fitting on the propane hose to the propane tank.
3. Insert the protective plastic plug into the cylinder valve outlet.

## CARE AND MAINTENANCE

- You may clean the torch surfaces with soap or detergent/water solutions. Do not use petroleum-based cleaners to clean any components of the torch or the torch body.
- Do not clean the burner tube immediately after turning the flame off. Put it in a cool, dry location for about 30-45 minutes after use.
- Make sure it is completely cooled, then clean it.
- Remove any debris or combustible materials that may have accumulated on the torch. The torch must be kept free and clear from combustible materials, gasoline, and other flammable vapors and liquids.
- Visually inspect the supply hose assembly that goes to the propane cylinder prior to using the torch every time. If you see any excessive abrasion or wear, or the hose has been cut/torn anywhere, you will need to replace it before you use the torch. Contact Ivation® customer care for more information if you need to replace the hose.
- Any other servicing should be performed by an authorized service representative.
- Do not put the torch in water or it will not function correctly.
- Always store the torch in a cool, dry area to avoid a product malfunction or any O-rings breaking. Never attempt to store the torch while it is hot.
- When storing the torch indoors, make sure the connection between the propane cylinder and torch is disconnected.
- Always store the torch and gas cylinders separately. Make sure to read other warnings on the gas cylinder label regarding storage and disposal.
- Do not store the torch in locations where it might get damaged. Make sure to protect it from foot traffic, building materials, and contact with hot surfaces during use and while in storage.

# Questions or problems? CONTACT US!

✉ **info@myivation.com**

☎ **1-866-849-3049**

IVATION is a trademark of C&A IP Holdings, LLC, in the U.S, Canada, and the E.U.

All other products, brand names, company names, and logos are trademarks of their respective owners, used merely to identify their respective products, and are not meant to connote any sponsorship, endorsement or approval.

Distributed by C&A Marketing, Inc., 114 Tived Lane East, Edison, NJ 08837.  
Made in China.

© 2020. C&A IP Holdings, LLC. All Rights Reserved.



Conforms to UL 147 - 2016  
Certified to CGA 2.29 - 1997 (R2014)  
Safety Hand-Held Torches for Fuel Gases