

WATER HEATER ELEMENT HIGH WATT DENSITY 240V X 5500W



Peace of Mind for the Professional Plumber

TECHNICAL DATA

DESCRIPTION: Water Heater Element -
High Watt Density - 240V x 5500W

CONSTRUCTION:

Element - Copper tubing sheathed-tinned

Flange - Zinc-plated carbon

Washer - Nitrile butadiene rubber

TECHNICAL SPECIFICATIONS:

Density - High

Watts @ 240 V - 5500 w

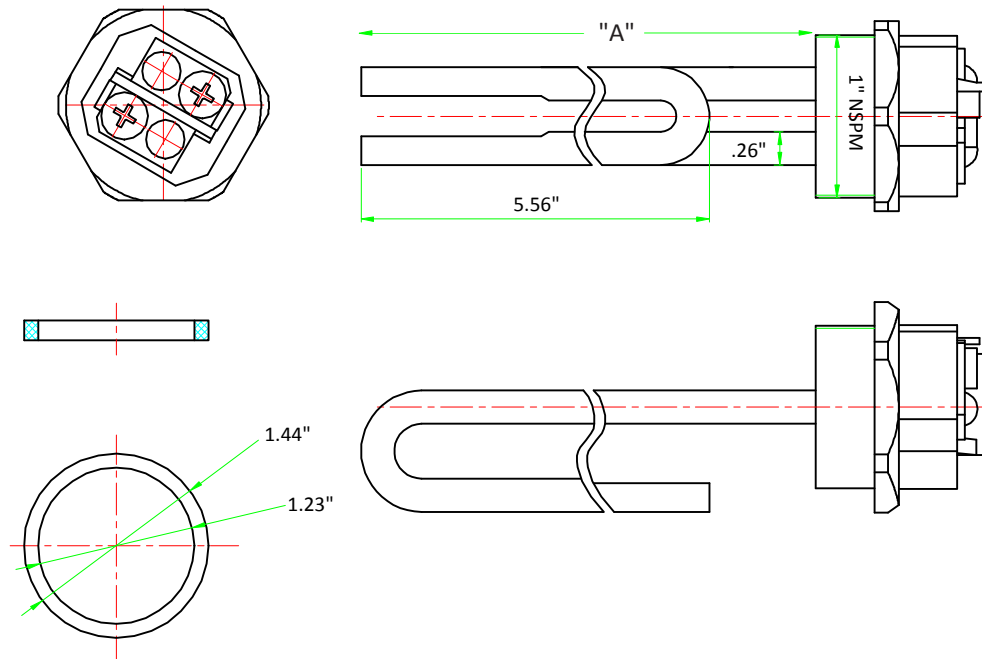
Connection Type - 1" NSPM Screw-in

Fits Most - American, AO Smith, Bradford
White, Kenmore, Lochinvar, Maytag, Mor-
Flo, Reliance, Rheem, Richmond, Rudd,
Sears, State, Whirlpool

PART#	Dimension "A"	Master	Pack	UPC
60069	10-1/8"	10	Bag	091712600695

MADE IN: China

ROUGH IN DRAWING



ALL DIMENSIONS SHOWN ARE NOMINAL