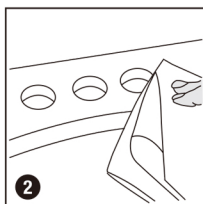
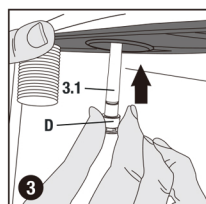


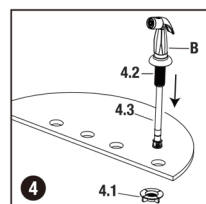
1. Shut off the water at the supply valves under the sink or at the main water supply. Disconnect the supply lines. Remove the existing faucet from the sink. Clean and dry the surface area where the new faucet will be mounted.



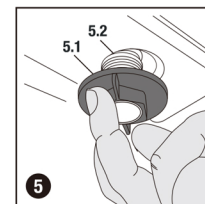
2. Remove any dirt or plumber's putty from around the faucet holes on the sink.



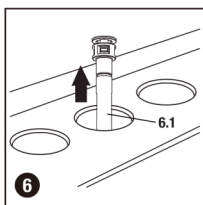
3. If you choose not to install the side spray assembly (C), remove the protective cap from the side spray quick connect outlet (3.1) and snap the plug (D) onto the side spray quick connect outlet (3.1). Pull down on cap to verify it is in the locked position. Proceed to step 8.



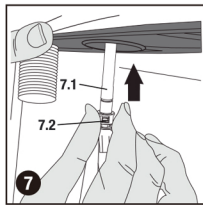
4. Unscrew the mounting nut (4.1) from the shank (4.2) on the side spray assembly (B). Place the spray hose (4.3) into the fourth hole in the sink, located on the right side of the faucet.



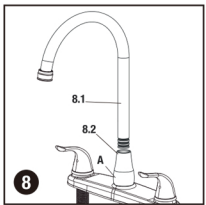
5. From underneath the sink, thread the plastic mounting nut (5.1) onto the shank (5.2) on the spray hose guide and hand tighten. NOTE: It is helpful to have a second person hold the side spray assembly (C) in place while tightening the mounting nut.



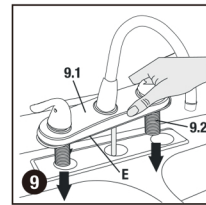
6. From underneath the sink, push the spray hose with quick connector (6.1) up through the middle of the three remaining faucet holes.



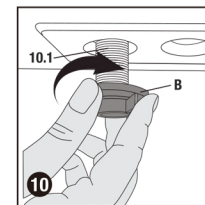
7. Remove the protective cap from the side spray quick connect outlet (7.1). Push the spray hose with quick connector (7.2) onto the side spray quick connect outlet (7.1) on the faucet. Give the spray hose a tug to ensure it's securely connected.



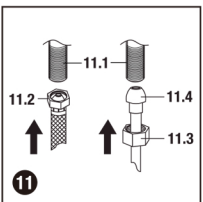
8. Securely insert the spout (8.1) into the faucet body (A). Hand tighten the nut (8.2).



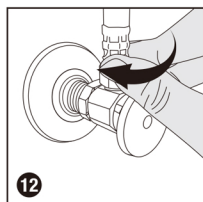
9. Apply a thin bead of silicone sealant to the putty plate (E) attached to the underside of the deckplate (9.1). Carefully slide the faucet shanks (9.2) into the sink holes.



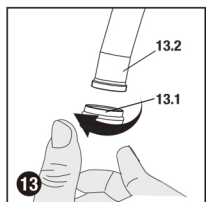
10. From underneath the sink, thread the mounting nuts (B) onto the shanks (10.1) on the faucet body (A). Check the position of the faucet and hand tighten until the faucet is securely mounted. NOTE: It is helpful to have a second person hold the faucet in place while tightening the mounting nuts (B). Also, do not remove the customer service tag with the model number and phone number, as this info will be helpful if you need assistance in the future.



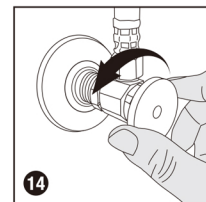
11. Attach one end of each of the water supply lines onto the shanks (11.1) on the faucet body with hot water on the left and cold water on the right. Use 1/2 in. IPS faucet connections (11.2) or supply line coupling nuts (11.3) with a 3/8 in. OD ball-nose riser (11.4). NOTE: Do not reuse existing supply lines. When installing new water supply lines, please refer to the supply line manufacturer's installation instructions. Tighten the supply line connections using an adjustable or basin wrench. Do not overtighten.



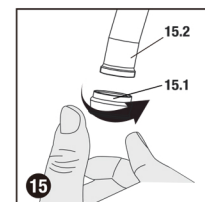
12. Attach each of the remaining ends of the water supply lines to the hot and cold water shut-off valves and tighten with a wrench. Do not overtighten.



13. Before turning on the water, unscrew and remove the aerator (13.1) from the spout (13.2) on the faucet body (A). Do not lose the gasket from inside the aerator. If necessary, use pliers and a cloth to protect the finish of the faucet. Be careful not to pinch too hard to avoid damaging the product.

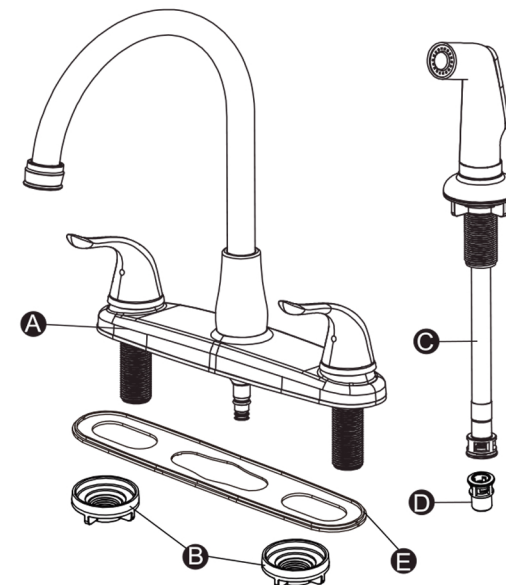


14. Open the hot and cold water supply valves. Check for leaks at all waterway connections. If a leak occurs, tighten the nut on the connection that is leaking.



15. After the faucet connections have been checked for leaks, run hot and cold water uninterrupted for about one minute to remove any residue from the lines. Turn off the water and screw the aerator (15.1) back onto the spout (15.2) of the faucet body (A).

## Two Handle Kitchen Faucet



### Part List

PART	DESCRIPTION	QUANTITY
A	Faucet body	1
B	Mounting nut	2
C	Side spray assembly	1
D	Plug	1
E	Putty plate	1