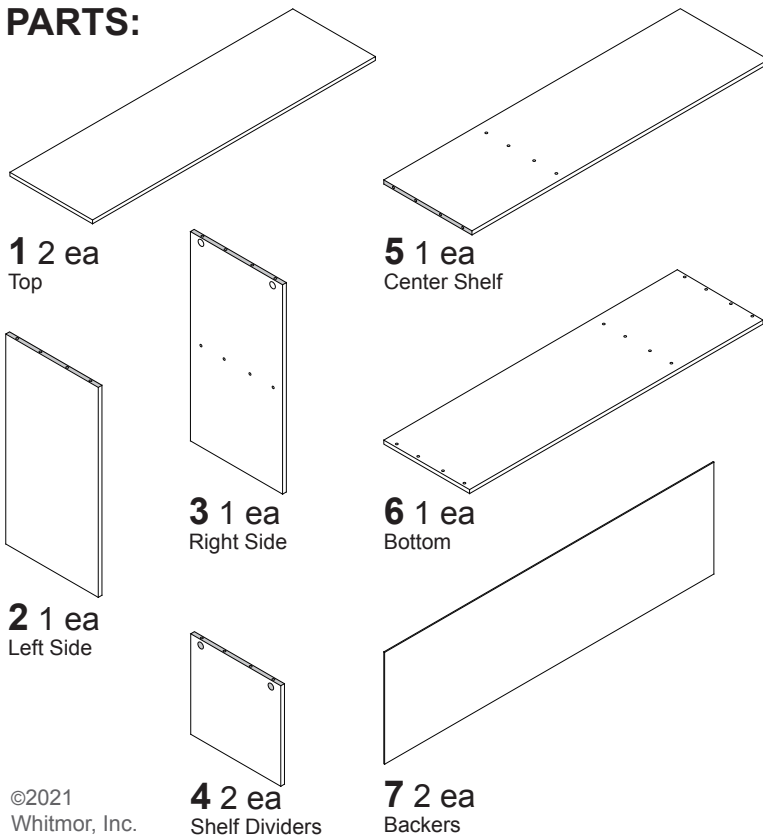


Part	Reference
1	F11897
2	F11898
3	F11899
4	F11900
5	F11901
6	F11902
7	F11903
A	F10498
B	F10499
C	F11904
D	F10500
E	F10378
F	F11905
G	F11906
H	F10422
I	F10505
J	F10506
K	F10509

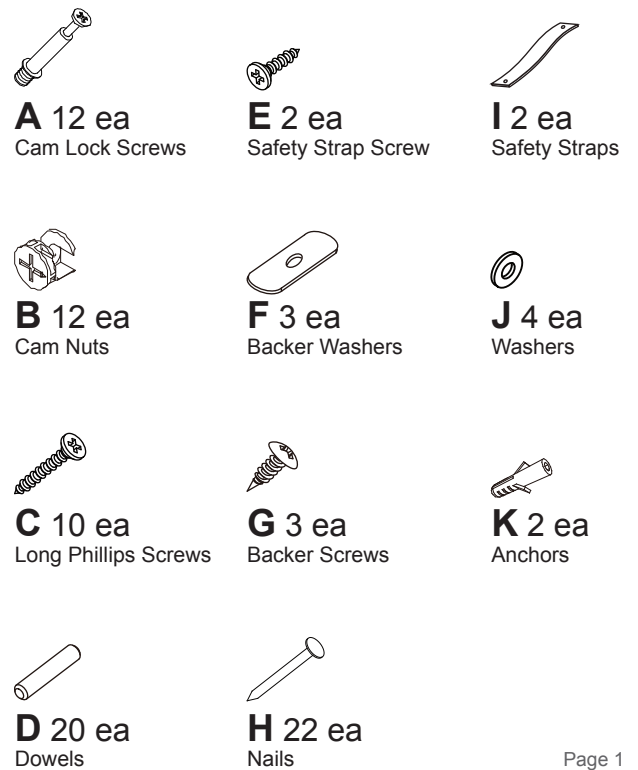
Care Instructions:
Wipe clean with a dry cloth.

Tools Needed:
A Phillips screwdriver and a hammer.

PARTS:



HARDWARE:



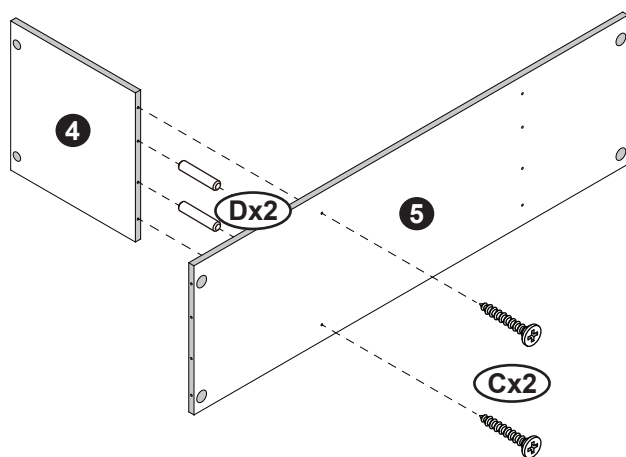
**WARNING**

- This unit contains small parts which could be a choking hazard for small children. Children should be under adult supervision at all times or serious injury could occur.
- Always unload unit prior to moving the unit. The weight of personal belongings can cause the unit to become unstable and either tip or collapse. Serious bodily injury and/or damage to personal belongings may occur.
- Do not overload unit. If any shelf, top, or bottom of unit bows or bends, it is overloaded. The shelf, top, or bottom could collapse and cause serious bodily injury and/or damage to personal belongings.
- Do not climb or step on the unit. The unit may become unstable and either tip or collapse. Serious bodily injury and/or damage to personal belongings may occur.
- Do not mount or attach anything to the sides, rear or front of the unit as this can create a force which can cause the unit to tip. Serious bodily injury and/or damage to personal belongings may occur.
- Do not hang this unit on the wall. The product structure is not designed for wall hanging. Serious bodily injury, damage to personal belongings, and/or damage to the wall may occur.
- Unit must be secured to a wall stud using the included safety strap and screws. Failure to do so may create an unsafe tipping hazard that could lead to serious bodily injury and/or damage to personal belongings.
- Follow proper safety procedures when using power tools and ladders (when applicable).
- We recommend you protect your work surface during assembly to prevent scratching or damage to table tops, wood floors, etc.

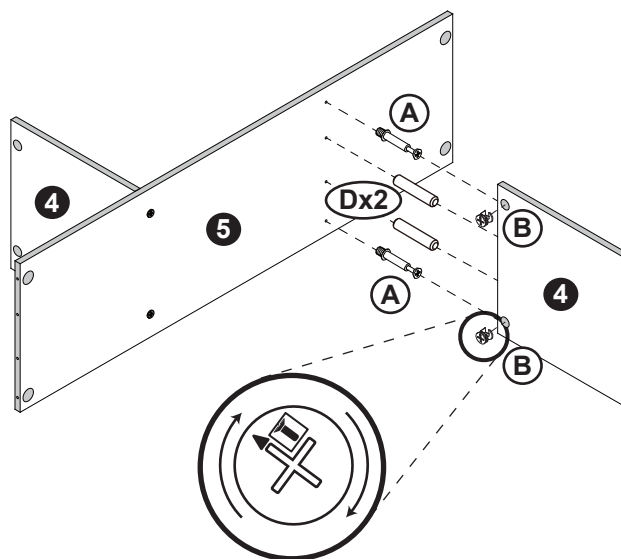
As you assemble your new organizer, make sure the unfinished edge of each board is facing up.

STEP 1:

- ☐ Insert two dowels (**D**) into the top pre-drilled holes of the center shelf (**5**).
- ☐ Firmly press a shelf divider (**4**) onto the dowels as shown below.
- ☐ Secure using two long Phillips screws (**C**).
- ☐ Tighten using a Phillips screwdriver (not included).

**STEP 2:**

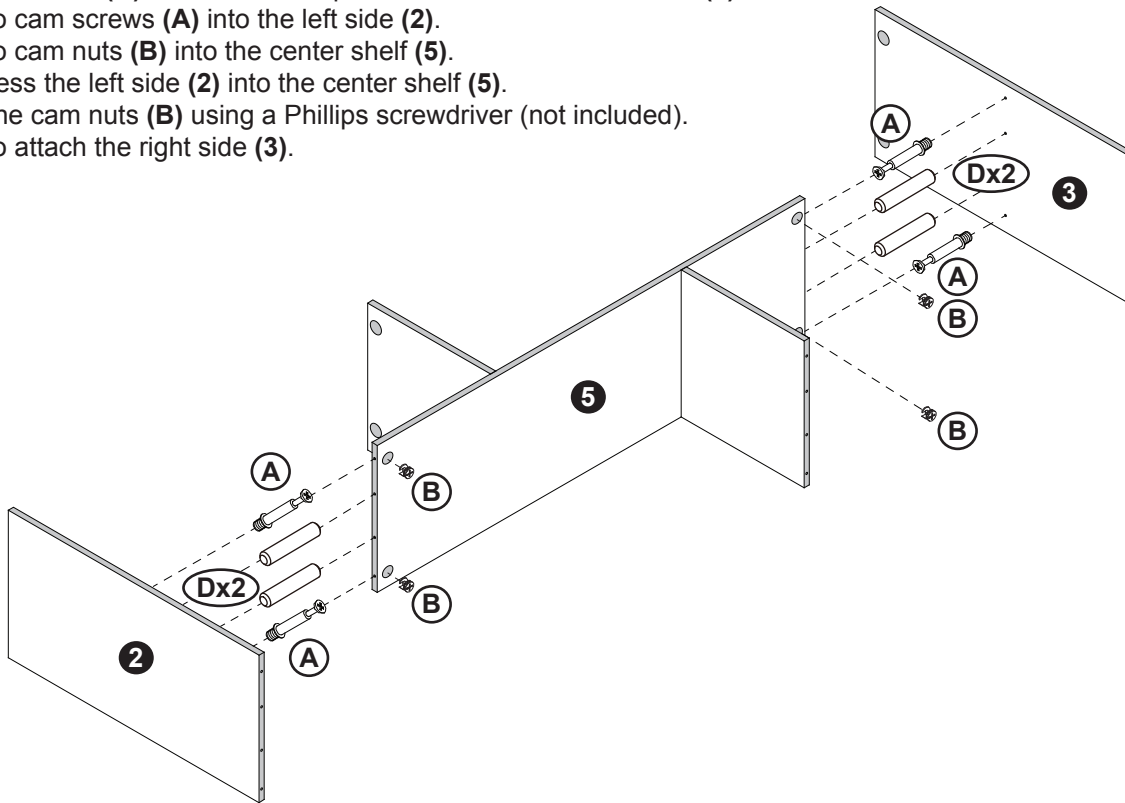
- ☐ Insert two dowels (**D**) into the bottom pre-drilled holes of the center shelf (**5**).
- ☐ Insert two cam screws (**A**) into the center shelf (**5**).
- ☐ Insert two cam nuts (**B**) into the second shelf divider (**4**).
- ☐ Firmly press the shelf divider (**4**) onto the dowels (**D**) and cam screws (**A**).
- ☐ Tighten the cam nuts (**B**) using a Phillips screwdriver (not included).



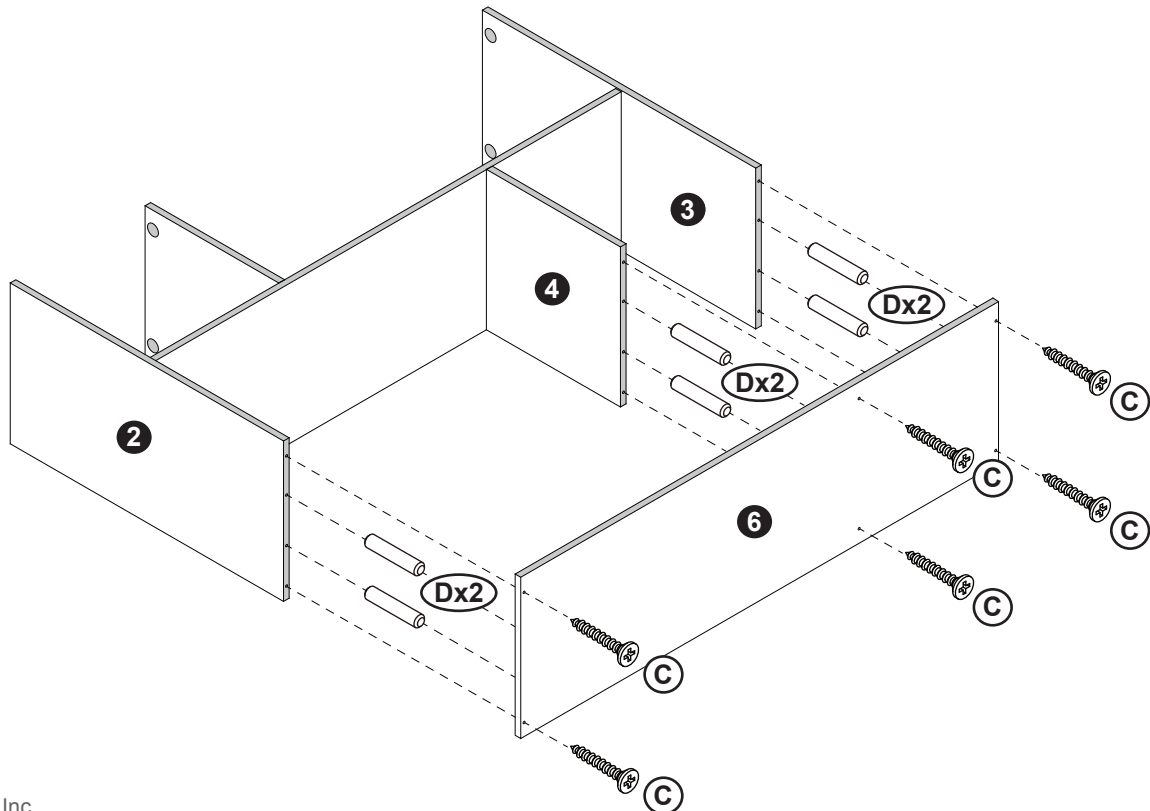
NOTE: When placing the cam nuts (**B**), point the arrow at the pre-drilled hole.

STEP 3:

- ☐ Insert two dowels (**D**) into the bottom pre-drilled holes of the left side (**2**).
- ☐ Insert two cam screws (**A**) into the left side (**2**).
- ☐ Insert two cam nuts (**B**) into the center shelf (**5**).
- ☐ Firmly press the left side (**2**) into the center shelf (**5**).
- ☐ Tighten the cam nuts (**B**) using a Phillips screwdriver (not included).
- ☐ Repeat to attach the right side (**3**).

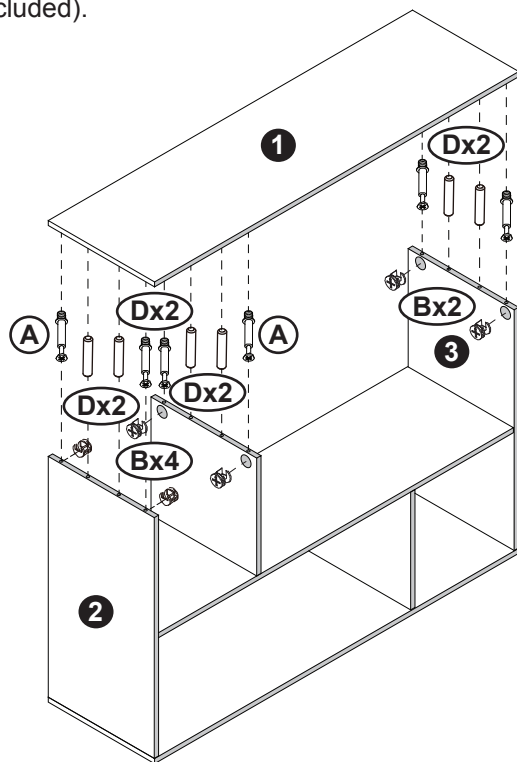
**STEP 4:**

- ☐ Insert two dowels (**D**) into the left side (**2**), the second shelf divider (**4**) and the right side (**3**).
- ☐ Firmly press the bottom (**6**) onto the six dowels (**D**) secure using 6 long Phillips screws (**C**).
- ☐ Tighten the screws (**C**) using a Phillips screwdriver (not included).

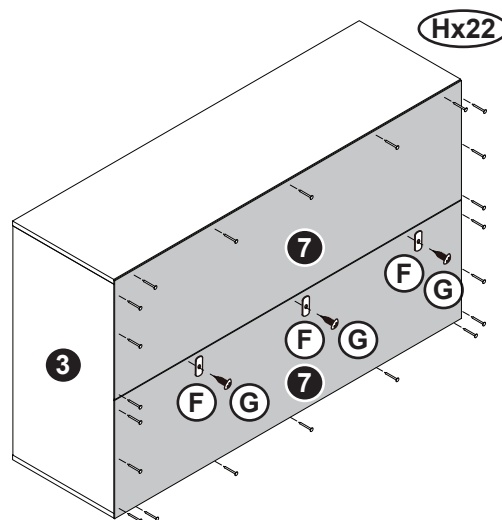


STEP 5:

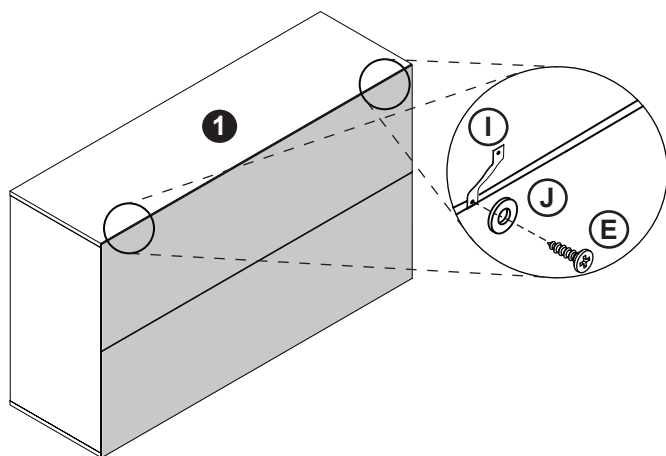
- ☐ Stand the organizer up.
- ☐ Insert two dowels (**D**) and two cam nuts (**B**) into the left side (**2**), the first shelf divider (**4**) and the right side (**3**).
- ☐ Attach 6 cam screws (**A**) into the smaller pre-drilled holes on the top (**1**) using Phillips screwdriver (not included).
- ☐ Firmly press the top (**1**) onto the six dowels (**D**), align cam screws (**A**) with cam nuts (**B**).
- ☐ Tighten the cam nuts (**B**) using a Phillips screwdriver (not included).

**STEP 6:**

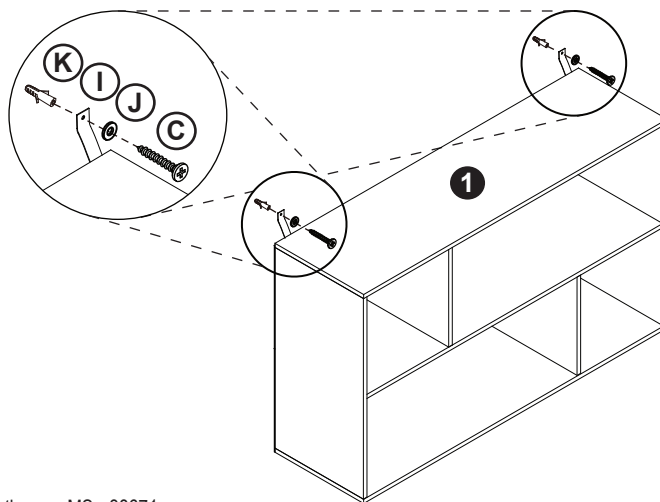
- ☐ Follow the drawing below to install the backers (**7**) using 22 nails (**H**) and a hammer (not included).
- ☐ Attach three backer washers (**F**) between the two backers (**7**) using three backer screws (**G**).
- ☐ Tighten using a Phillips screwdriver (not included).

**STEP 7:**

- ☐ Install two safety straps (**I**) to the back of the assembled unit using two washers (**J**) and two safety strap screws (**E**).
- ☐ Tighten using a Phillips screwdriver (not included).

**STEP 8:**

- ☐ Attach safety strap to the wall using two wall anchors (**K**), two washers (**J**) and two long Phillips screws (**C**).
- ☐ Tighten using a Phillips screwdriver (not included).



8680 Swinnea Road • Suite 103 • Southaven, MS • 38671

NEED HELP? For help with assembly, or if you are missing a part, please call Whitmor's Consumer Care Team, 1-888-944-8667 between 8 a.m. and 4:30 p.m. (Central Standard Time) Monday through Friday. Or email: help@whitmor.com. Visit us online at www.whitmor.com