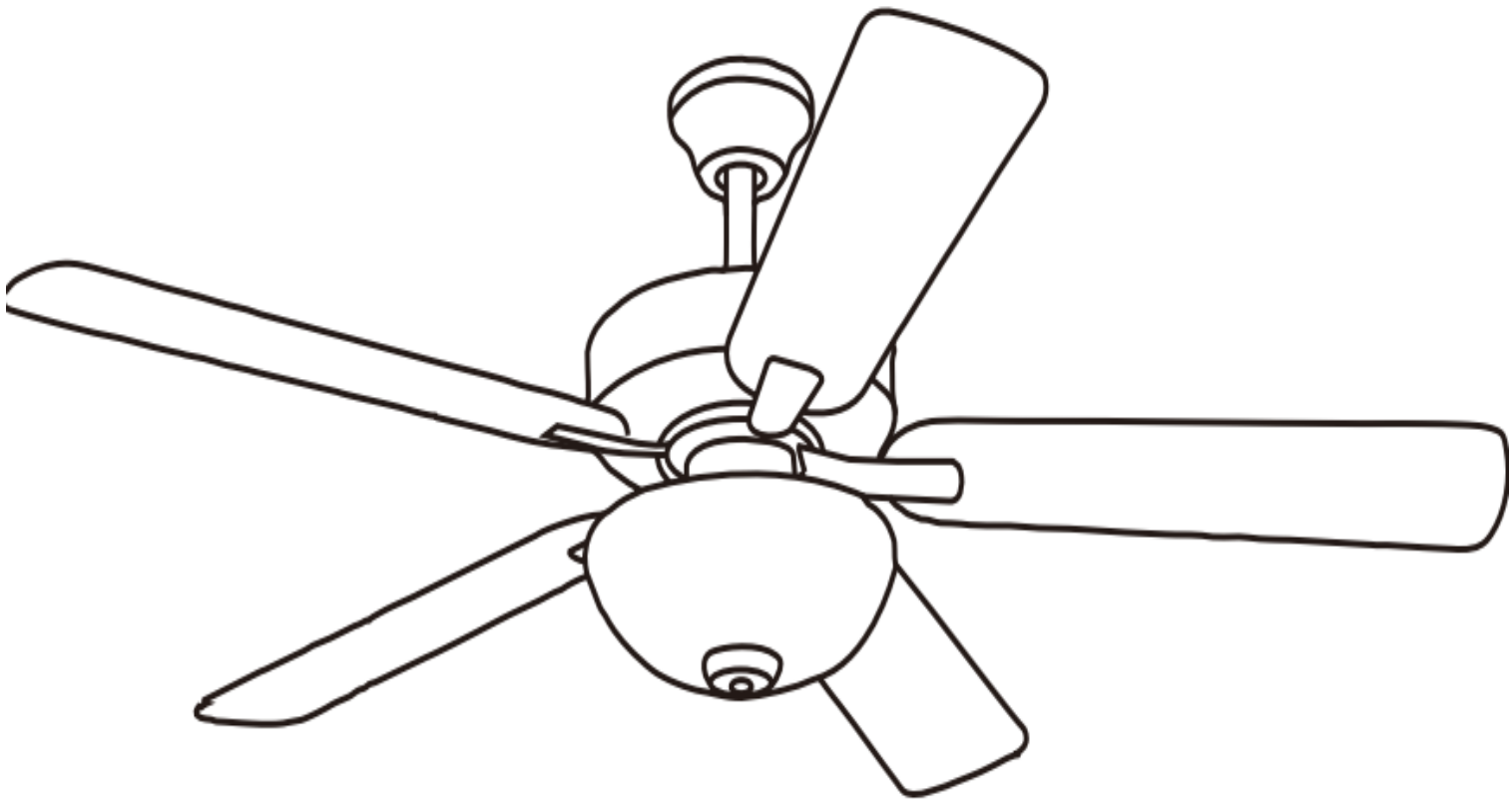


User Manual

52" Dual-Mount Ceiling Fan



MODEL NO: F383/F384/F385



Customer Service Number: (832) 478-8866

Customer Service Email Address: WeCareWeFix@gmail.com

Please include your name, contact methods, product name, and model number in the email.

Pictures are always helpful for understanding the issues.



WARNING

WARNING: To avoid fire, shock and serious personal injury, please read the following instructions carefully.

Important Safety Instructions

1. Read all instructions and safety information before installing your new fan. Review the assembly and electrical diagrams carefully.
2. Before installing the fan, disconnect the power by removing fuses or turning off circuit breakers.
3. Make sure all electrical connections comply with local codes, ordinances, and National Electrical Codes. Hire a certified electrician or consult to install.
4. Make sure the installation site you choose allows the fan blades to rotate without any obstructions. Allow a minimum clearance of 7 feet from the floor to the trailing edge of the blades.
5. If you are mounting the fan on a ceiling outlet box, use a metal outlet box. Secure the box directly to the building structure. The outlet box and its support must be able to support the moving weight of the fan (at least 50 lbs.). Do not use a plastic outlet box. Attach the mounting bracket by using the hardware supplied with the ceiling outlet box.
6. If you are mounting the fan to a joist, make sure it is strong enough to support the moving weight of the fan (at least 50 lbs.)
7. After installing the fan, make sure all the connections are secured. This will prevent the fan from falling.
8. Do not insert anything into the fan blades while the fan is operating.
9. Turn the fan off and wait for it to stop before reversing fan direction.
10. To reduce risk of electrical shock and personal injury, do not install the fan on a sloped ceiling.
11. To reduce the risk of electrical shock and personal injury, do not use this fan with any solid-state.
12. To reduce risk of personal injury, use only the two steel screws and lock washers provided with the fan for mounting the outlet box.

Table of Contents

ASSEMBLY DRAWING & PARTS LIST-WITH LIGHT.....	2
INSTALLATION INSTRUCTION THE FAN-WITH LIGHT	3-6
MAINTENANCE / BALANCING FAN / WOBBLING TROUBLE SHOOTING	7
FEATURES & REMOTE CONTROLLER	8

ASSEMBLY DRAWING & PARTS LIST-WITH LIGHT

Parts List Unpacking

Unpack and check the contents.
Please check each item prior to installation

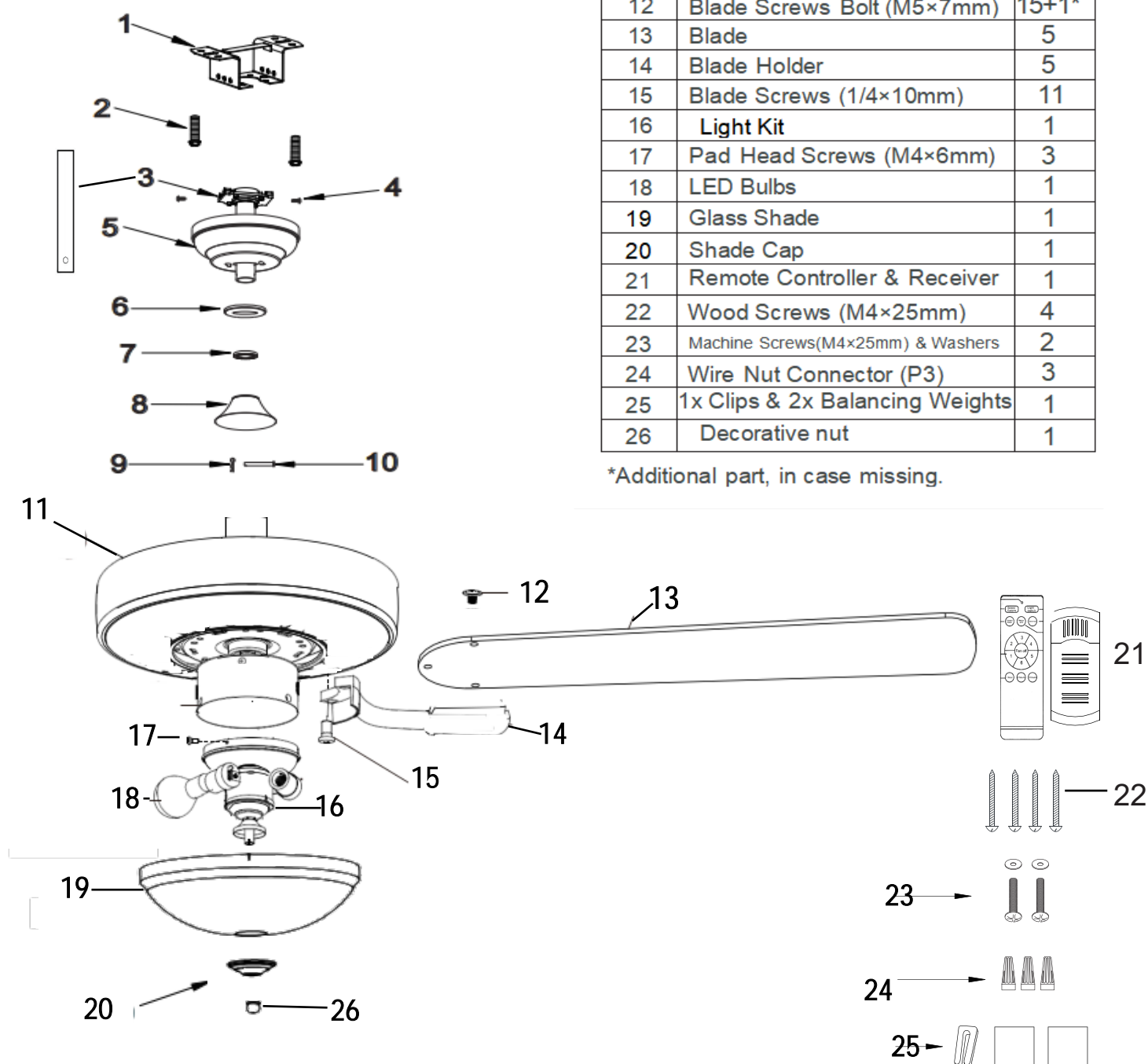
To reduce the chance of marks or possible damages, please pickup the parts when required for installation.

Parts List

Ref.#	Description	Part#
1	Hanger Bracket	1
2	Canopy Screw (M4×20mm)	2
3	Downrod Assembly 5"/10"	1
4	Hanger Screws (M4×8mm)	2
5	Canopy	1
6	Magnetic Cover	1
7	Rubber ring	1
8	Bell Cover	1
9	Hairclip Pin	1
10	Clevis Pin	1
11	Fan Motor Assembly	1
12	Blade Screws Bolt (M5×7mm)	15+1*
13	Blade	5
14	Blade Holder	5
15	Blade Screws (1/4×10mm)	11
16	Light Kit	1
17	Pad Head Screws (M4×6mm)	3
18	LED Bulbs	1
19	Glass Shade	1
20	Shade Cap	1
21	Remote Controller & Receiver	1
22	Wood Screws (M4×25mm)	4
23	Machine Screws(M4×25mm) & Washers	2
24	Wire Nut Connector (P3)	3
25	1x Clips & 2x Balancing Weights	1
26	Decorative nut	1

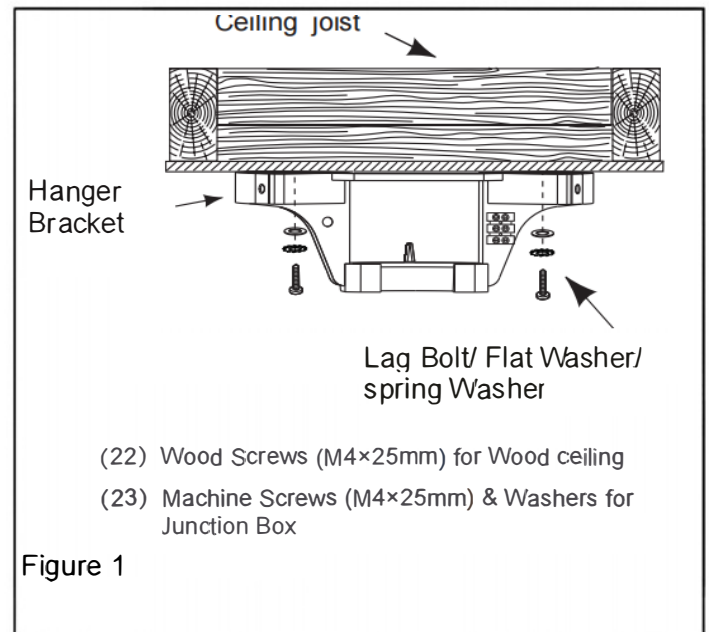
*Additional part, in case missing.

Assembly Drawing



INSTALLATION INSTRUCTION THE FAN-WITH LIGHT

1. Securely attach the hanger bracket to the ceiling joist using the lag bolt, flat washer and spring washer supplied.
(Figure 1)



2. Assemble the blades with the brackets with screws bolts and nuts.

Screw the fan blades to the motor assembly. Repeat to install the remaining 5 blades. (Figure 2)

Make sure the set screws securing the blade are tight and the blades are properly seated

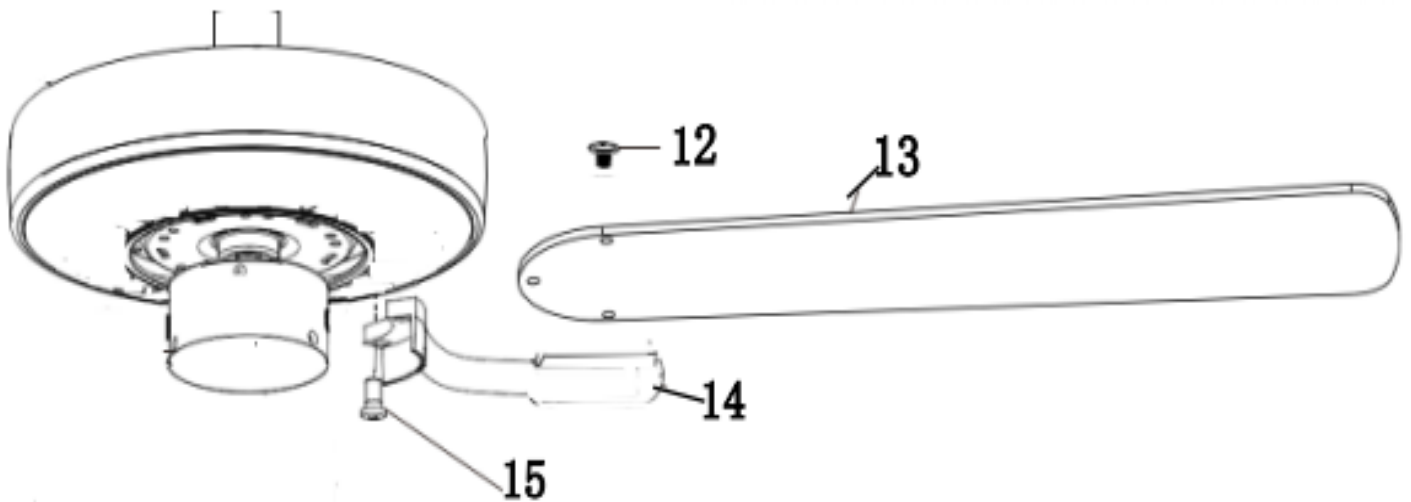
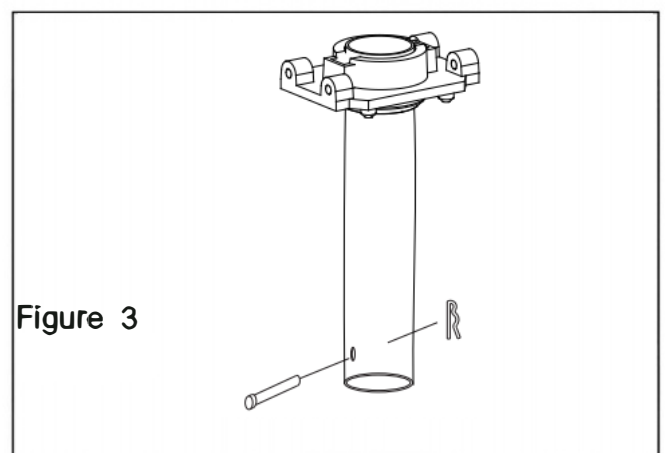


Figure 2

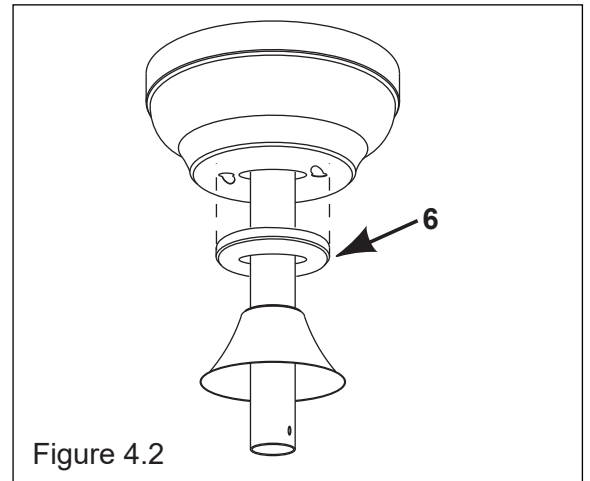
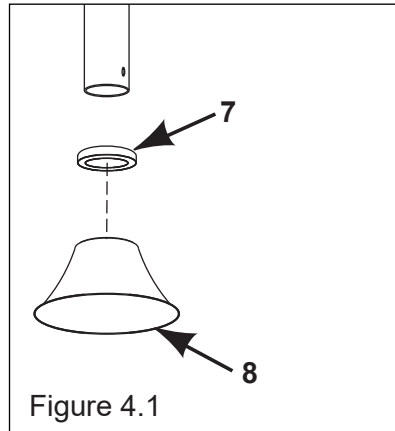
3. Take off the pin on the downrod.
(Figure 3)



INSTALLATION INSTRUCTION THE FAN-WITH LIGHT

4. Install rubber ring to bell cover (Figure 4.1)

Install the canopy, magnetic cover and bell cover on the downrod. (Figure 4.2)



5. Place the downrod into the downrod support on motor. (Figure 5).

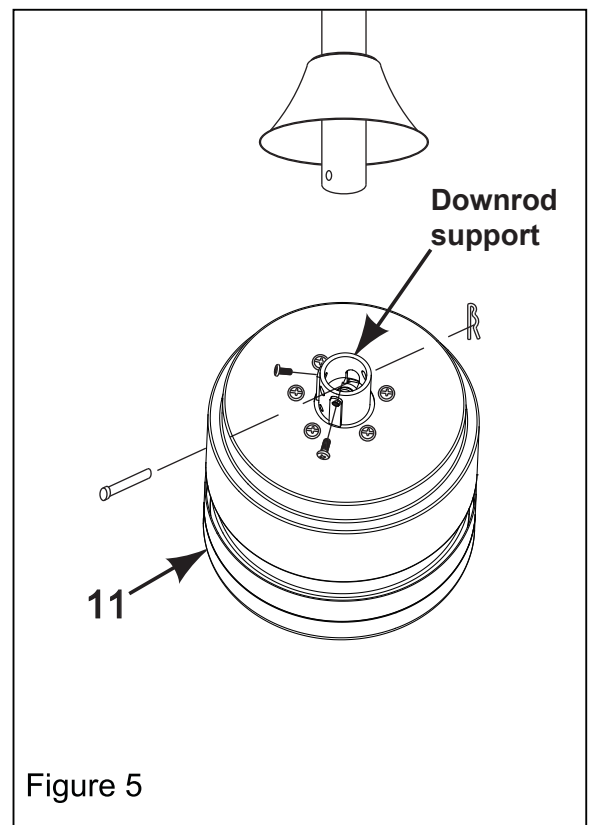
All the electrical wires go through the downrod to the top end.

Align the Clevis Pin holes in the Downrod with the holes in the Downrod Support. Be sure to push the straight leg of the Hairpin Clip through the hole near the end of the Clevis Pin until the curved portion of the Hairpin snaps around the Clevis Pin.

Finally, re-tighten the two screws.

WARNING

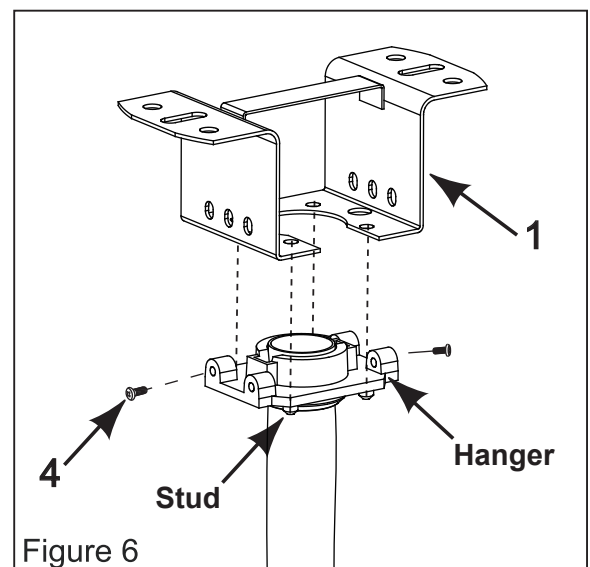
It is critical that the clevis screw in the downrod support is properly installed and the screws are securely tightened. Failure to verify the clevis, hairpin clip or screws properly installation could cause the fan falling.



6. Carefully lift the fan, and set the downrod & hanger assembly on the hanger bracket attached to the ceiling joist. Studs on the hanger are properly aligned with the holes on the hanger bracket. 2 screws (M4×10mm) fix it strongly. (Figure 6)

WARNING

The fan must be hung with at least 210 cm of clearance from floor to blades.



INSTALLATION INSTRUCTION THE FAN-WITH LIGHT

7.1. Wiring instruction:

WARNING

To avoid possible electrical shock , be sure electricity is turned off at the main fuse box before wiring

Connect 120V main power to the ceiling fan.
(Figure 7.1)

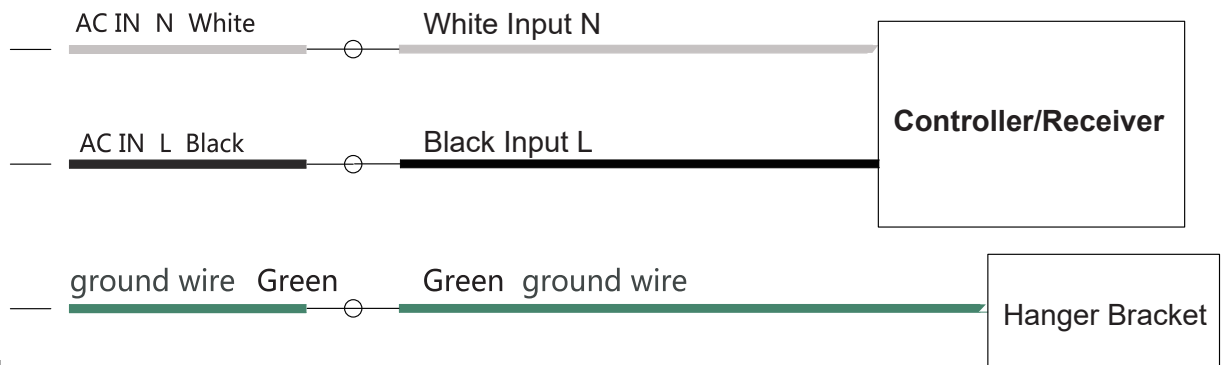


Figure 7.1

7.2. Install Receiver/Controller into Hanger Bracket (Figure 7.2)

White Remote Controller Receiver

Red, Black and White
Connector at end for Motor

White and Black
for Power Input

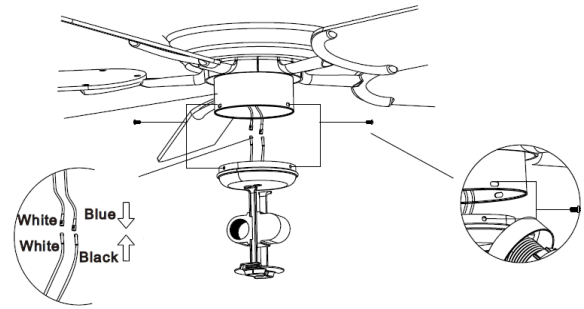
Receiver/Controller

White and Blue
for LED Bulbs
(White to White, Blue to Blue)

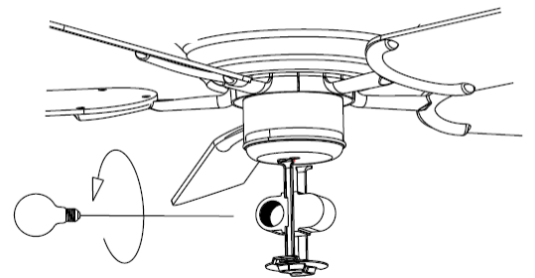
Figure 7.2

INSTALLATION INSTRUCTION THE FAN-WITH LIGHT

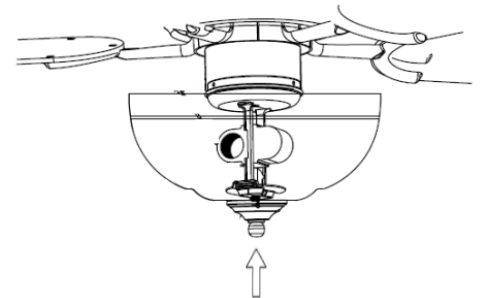
Insert the neutral line (white) and live line (blue) reserved in the switch box at the bottom of the main body and the neutral line (white) and live line (black) reserved for light kit, then align the cover and the switch box with the holes, and fix the 3 screws



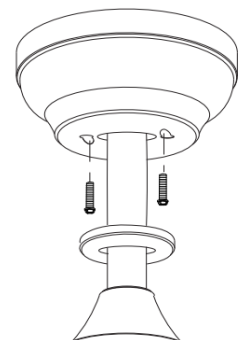
Install 2 x 9 W E26 bulbs. Screw the bulb into the lamp holder.



put the glass lampshade and lid on the top and tighten the nut



Mount the canopy by tightening the two screws.



OPERATION

- Control your fan and light with remoter.

MAINTENANCE

1. Periodic cleaning of your new ceiling fan is the only maintenance that is needed.
2. When cleaning, use only a soft brush or lint free cloth to avoid scratching the finish.
3. Abrasive cleaning agents are not required and should be avoided to prevent damage to finish.



WARNING

Do not use solvents when cleaning your ceiling fan. It could damage the motor and create the possibility of electrical shock.

RECOMMENDED:

Periodically check the screws between blade and the fan motor are secure and tight.

BALANCING FAN / WOBBLING TROUBLE SHOOTING

Please note that all ceiling fans are not the same, even in the same model—some may move more or less than others.

Movement of a couple of centimeters is quite acceptable and does not suggest the fan will fall down.

Even though all blades are weighted and grouped by weight, it is impossible to eliminate wobble altogether. This should not be considered a fault. Ceiling fans tend to move during operation due to the fact that they are not generally rigidly mounted.

TRY THE FOLLOWING TO REDUCE A WOBBLING FAN;

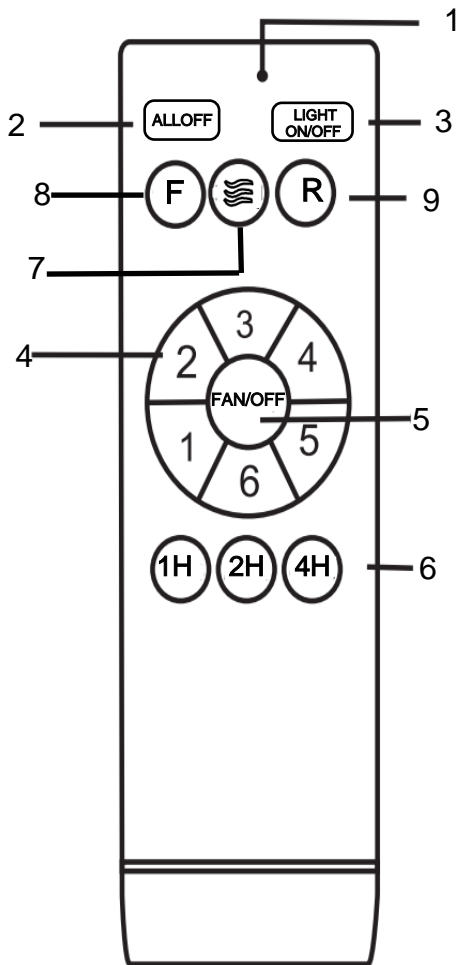
1. Check that all of the blade mounting screws are tightened and secure.
2. Wobbling problems may result from inconsistent blade level. To check the blade level, measure the distance from each blade tip to the ceiling. Note: If measurements are inconsistent:
 - Be sure the blade mount screws are not too tight or too loose, which may cause wobbling due to an unlevel blade tip
 - An out of shape blade can cause wobbling. Check by removing the blade and placing on a flat surface.
3. Blade tracking may be checked simply by use of a household ruler. Place the ruler vertically against the ceiling and even with the outside leading edge of a blade. Note the distance of the edge of a blade compared to the others. Turn the blade slowly by hand to check the remaining blades.

If a blade is not in alignment, the blade is either out of shape, warped or the blade screws are not evenly tighten or either loose.

BALANCING KIT

A Balancing Kit has been provided to assist with reducing a wobble. Please retain the kit as it may become useful should the fan develop a wobble in the future. Instructions on how to use the Balancing kit can be found within the Kit.

Instructions for remote control



- 1.LED indicator
- 2.Turn off lights and fans/off
- 3.Lights on,lights off
- 4.Wind speed adjustment gear
- 5.The fan stopped turning
- 6.Fan timing
- 7.Natural Wind
- 8.The fan turns clockwise
- 9.The fan rotates anticlockwise

Tips:

1.The remote and controller/Receiver were setup to match each other in the manufacture, so that you can use the remote to control the fan and light.

2. While the remote can' t control the fan or light, please check whether the battery is good or not.

2.1connection good or not

2.2 A new batteries needed or not

If the batteries are good, but the remote can not control fan or light, please re-set up the remote to match the fan.

3.Too low battery voltage will affect the remote control distance and may cause remote fail.

Please replace the battery in time

4.When not use for a long time, please take out the batteries of the remote control.

5.Setup procedure and button:

5.1Power off

5.2Keep OFF for more than 1 Minute

5.3Power on, then press both 1H and 4H buttons immediately, within 5seconds

5.4You will hear a “ beep” , that means SETUP successfully.

5.5You can use the remote to control the fan and light

6.Make sure children don' t play the remote.

7.For more assistants, please contact us for support.