

# INSTALLATION INSTRUCTIONS FOR P5044

## For Wall Mount Fixture

**WARNING! SHUT POWER OFF AT FUSE OR CIRCUIT BREAKER .**

**AVERTISSEMENT ! COUPER LE COURANT AUNIVEAU DE FUSIBLES OU DU DISJONCTEUR**

### PREPARATION

1. Shut off the power at the circuit breaker box (avertissement! couper le courant au niveau des fusibles ou du disjoncteur) and remove the old fixture, including the mounting hardware.
2. Carefully unpack your new fixture and lay out all the parts on a clear area. Take care not to lose any small parts necessary for installation.

### MOUNTING THE FIXTURE (FIG. 1)

3. Secure mounting back plate (A) to the junction box using mounting screws (B)(Size:8-32\*1/2"L). The side of the mounting back plate marked "GND" must face out.

### CONNECTING THE WIRES (FIG. 2)

4. At this point, connect the electrical wire as shown in Fig. 2, making sure that all wire connectors are secured. If your outlet has a ground wire (green or bare copper), connect the fixtures ground wire to it. Otherwise, connect the fixture ground wire directly to the back plate (A) using the green screw provided. After wires are connected, tuck them carefully inside the junction box.
5. Place the fixture's back plate (C) over the mounting back plate (A) and secure with screws (D).

### FINISHING THE INSTALLATION (FIG.1)

6. Install the Xenon G9 bulbs for your fixture (3 x Max 60W). **DO NOT EXCEED THE SPECIFIED WATTAGE! (NE PAS DEPASSER LA PUISSANCE NOMINALE MAXIMALE)**
7. Slide the glass (H) into the front bracket (E) and secure the shield (F) to the front bracket with screws (G).

Return power to the junction box and test the fixture. Your installation is now complete.

### IMPORTANT INSTRUCTION:

1. The light bulb gets HOT Quickly! Allow the light bulb to cool for 10 minutes before handling the bulbs and glass. Take out the glass from the fixture as show in Fig.1 (Step1.screw the screws (G) out and remove the shield (F) Step2.pull the glass up till the other side of it to place I. Step 3. take the glass out from the fixture).

**IMPORTANT: Fixture should be installed by a qualified electrician to ensure proper wiring and installation.**

Fig .2

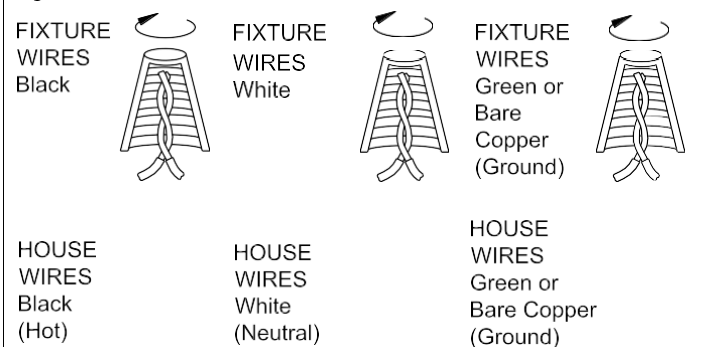
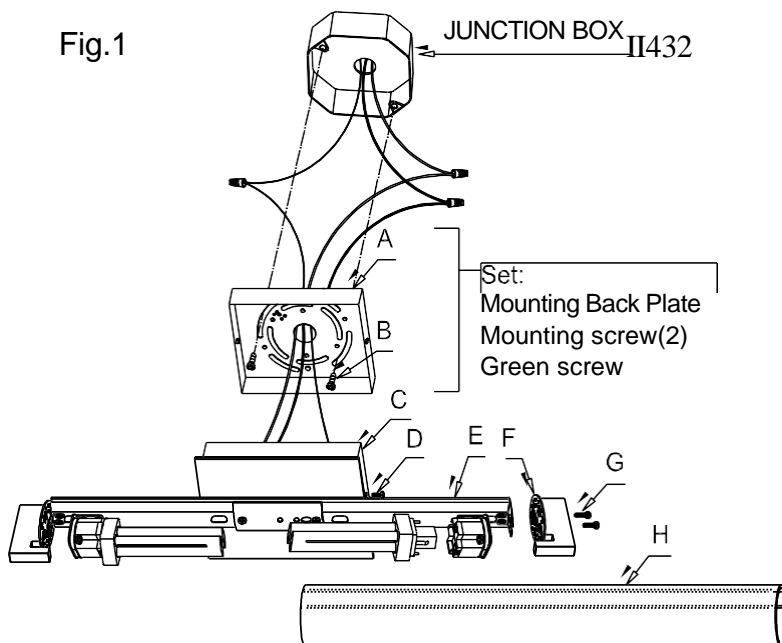


Fig.1



MIN 90°C