

Rainforest Floor Fountain with LED Lights and Bluetooth Speaker



**Have Questions or Issues? Need help with assembly?
Contact us and we will resolve them within 12 hours.**

Support Hours: M-F 7:30-5:00 (U.S. Pacific Time)



Call:
877-460-4511



Text:
323-201-4431



Email:
info@alpine4u.com

CONTENTS

What's Included	2
Features	3
Specifications	3
Assembling & Using Your Product.....	4
Pairing & Using Your Speaker(s).....	7
Pairing Troubleshooting.....	9
Fountain Troubleshooting.....	10
Replacement Parts.....	10
Caution	11
Also Available from Alpine	11
Limited Warranty Information	12

WHAT'S INCLUDED



Fountain x1
(LED lights pre-installed)



Back Door x1



Submersible Pump x1



Transformer and Socket
Connector x1

**Pump may be packaged separately in an outer box located
in the outer Styrofoam packaging.*

FEATURES

Made of weather-resistant Polystone.

Add your favorite music to the soothing sound of flowing water to create the perfect relaxing environment.

Bluetooth Speaker. Can pair up to two TZL199 fountains to any Bluetooth enabled device.



LED lights in each tier of this fountain are long-lasting, energy-efficient, and create a stunning nighttime display.

SPECIFICATIONS

Power Requirement.....	Standard Household 120V
Water Capacity	16.82 Gallons (63.6 L)
Tubing Diameter	0.75" I.D.

ASSEMBLING & USING YOUR PRODUCT

Unpack all components carefully. Check the packaging to ensure that you have removed all of the parts. Some splashing may occur when the fountain is in use.

1. Place the fountain base on a smooth and level surface. Allow enough space to access the pump through the back door.



2. Remove the pump from its packaging and adjust the flow control to the lowest setting to avoid splashing until the fountain is completely assembled.



Alpine Quick Tip #1

Turn counter-clockwise to reduce the water flow. Turn clockwise to increase the water flow.

3. Pull the vinyl tubing through the back opening of the fountain and connect it to the pump using the black tube connector.



Alpine Quick Tip #2

The tube connector may be attached to the vinyl tubing or to the pump depending on the product. It is shown attached to the pump here.

ASSEMBLING & USING YOUR PRODUCT

- Place the pump with the suction feet facing down on the bottom of the reservoir inside the fountain.
- Pull the LED light/speaker cord from the back of the fountain and connect it to the transformer. Slide the protective cover over the connection and turn clockwise to securely tighten.



- Without splashing, gently pour water into the fountain. Using distilled water prevents scale build-up. Do not allow the water to overflow! Make sure the water completely covers the pump.



- Plug the transformer and the plug from the pump into your local power supply. The pump will turn on and the fountain will begin to run.

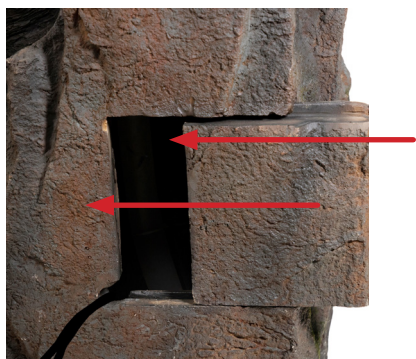


Alpine Quick Tip #3

Make sure that there is no water around the plugs and always keep the power source in a dry place. Plug the power cords into a properly grounded GFCI outlet when using outdoors.

ASSEMBLING & USING YOUR PRODUCT

8. You can now adjust the water pump to your flow preference as shown in Alpine Quick Tip #1. Once set, push all the cords into the slotted corner and slide the back door into the back opening of the fountain.



Alpine Quick Tip #4

The back door is designed with a slotted corner to hold the electrical cords in place.

9. Congratulations, your fountain is now complete. Don't forget to add water regularly, as water will evaporate over time.

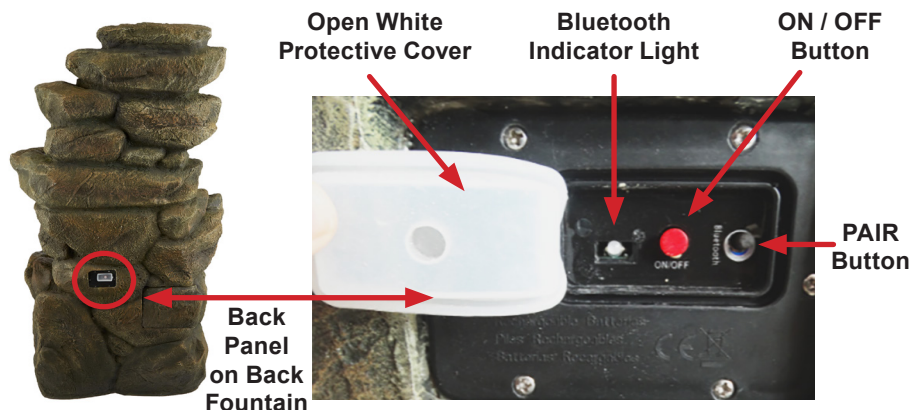


Alpine Quick Tip #5

Because there is air in the pump and water lines, it can take up to 5 minutes for the pump to expel the air completely. Then the water will flow properly. Make sure the water runs clear during operation.

PAIRING & USING YOUR SPEAKER(S)

You can pair up to two TZL199 fountain speakers to a phone or Bluetooth enabled device. Speakers should be within 25 feet (7.6 m) of each other. Bluetooth device range is 50 feet (15 m).



Before you Begin: Make sure the transformer is plugged in and has power. Open the white protective cover on the back panel to access the controls. Make sure your Bluetooth device is on and within 3 feet of the fountain.

Pairing One Speaker with a Bluetooth Device

1. Press the red ON/OFF button to turn your speaker on. You will hear “Alpine Corporation” and the Bluetooth Indicator Light will flash between red and blue.
2. Make sure your Bluetooth device is within 3 feet of the speaker and is turned on with your Bluetooth set to search for devices.
 - ♦ **Pairing an iOS Phone/Device:**
 - Go to **Settings > Bluetooth**. Make sure Bluetooth is ON.
 - ♦ **Pairing an Android Phone/Device:**
 - Go to **Settings > Bluetooth**.
 - Search for devices. Make Sure Bluetooth is ON.
 - ♦ **Pairing other Cell Phones/Devices:**
 - Review the instruction manual that came with your phone/device.
3. Select “Alpine Corporation TZL199” from the list of discovered Bluetooth devices. You will hear “Bluetooth is connected” when the device connects to the speaker.
4. After a successful pairing, you will hear a tone and the Bluetooth Indicator Light will slowly flash blue. Your device will be paired anytime it is on and you are within range.

Pairing Two Speakers with a Bluetooth Device:

NOTE: Read the detailed instructions for “Pairing One Speaker with a Bluetooth Device” before beginning. You will pair the speakers to each other and then pair your device to the speakers. The speakers can be placed within 25 feet of each other.

1. Press the red ON/OFF button to turn both speakers on. You will hear “Alpine Corporation” from both speakers.
2. Push the PAIR button twice quickly on one of the back speaker panels. You will hear “Bluetooth is connected” when the speakers connect to each other. The main speaker Bluetooth Indicator Light will flash red and blue and the sub speaker Bluetooth Indicator Light will flash blue.
3. Make sure your Bluetooth device is within 3 feet of the main speaker and is turned on with your Bluetooth set to search for devices. See Step 2 on Page 7 for more detail on pairing for different devices.
4. Select “Alpine Corporation TZL199” from the list of discovered Bluetooth devices. You will hear “Bluetooth is connected” and after a successful pairing, a tone will be heard and the Bluetooth Indicator Light on both speakers will slowly flash blue. Your device will be paired anytime it is on and within range.

Playing Music

To enjoy wireless music on your fountain speaker from your connected Bluetooth device, open your media player and press PLAY. Control the music and volume from your connected device.

Changing Paired Devices

The speaker(s) can only be paired to one Bluetooth device at a time. To change devices, first unpair the speaker from the current device. On your device's Bluetooth settings, select “Alpine Corporation TZL199” and press unpair or disconnect and then press forget device. Follow Step 3 on Page 7 to connect speaker(s) to your new device.

Unpairing Speakers from Each Other

Follow instructions to unpair your device from the speakers. Then to unpair the two speakers from each other, push the PAIR button on one of the speakers twice quickly. You will hear “disconnected” and both speaker's Bluetooth Indicator Lights will flash. You can now connect them separately to two different Bluetooth devices.

If you have any questions or problems, please contact the retail store where you purchased this speaker fountain.

Speaker(s) Not Connecting to Bluetooth Device

1. If your device does not show “Alpine Corporation TZL199” in your Bluetooth List:
 - **“Alpine Corporation TZL199” will not appear in your Bluetooth List when it is connected to another device.**
 - **Make sure all devices previously connected to the speakers are all disconnected. Remove “Alpine Corporation TZL199” from the Bluetooth List on those devices.**
2. Make sure your speaker(s) have power. If the LED lights are on, make sure the red ON/OFF button is pressed in the On position.
3. Make sure your Bluetooth device is turned on, is set to search for devices and is located within 3 feet of the main speaker.

Only One Speaker Has Sound

1. Make sure both fountains have power, the speakers are turned on and within 25 feet of each other.
2. Your speakers must be paired to each other before your Bluetooth device can be connected.
 - **If your Bluetooth is connected, make sure the Bluetooth indicator lights on both speakers are slowly flashing blue. If one is flashing red and blue and the other is slowly flashing blue, it means your device is paired to the speaker slowly flashing blue.**
 - **Unpair and disconnect your Bluetooth device and then follow step 2 for “Pairing Two Speakers with a Bluetooth Device” to pair the speakers to each other. Then continue with steps 3 and 4 to pair your Bluetooth device.**
3. You must have only one “Alpine Corporation TZL199” in your Bluetooth List. If your device shows “Alpine Corporation TZL199” twice on your Bluetooth List, you must remove both on your device:
 - **iOS devices: go to settings>Bluetooth> click the (i) icon > forget device**
 - **Android devices: go to settings> Bluetooth > click Gear icon> click unpair**
4. Then follow steps for “Pairing Two Speakers with a Bluetooth Device”.

FOUNTAIN TROUBLESHOOTING

If you have any questions or problems, please contact the retail store where you purchased this fountain.

If Your Pump Fails to Run

1. Check the circuit breaker or try a different outlet to make sure the pump is receiving electrical power.
2. Check the pump discharge and tubing for any kinks and/or obstructions.
3. Any buildup obstructing the water flow can be flushed with a garden hose.
4. Check the rotor by removing the front cover and plate to access the impeller area. Turn the rotor and make sure that the rotor is not jammed or broken.

If Your Pump “Spews”

- Check the water level to make sure the pump is completely submerged and there is enough water in the basin to operate your fountain. Not having enough water will cause your pump to spew.

If Your Pump Makes Abnormal, Loud Noises

1. Disconnect the pump from the electrical power supply and remove the front cover and plate.
2. Carefully grip the impeller and gently pull the impeller/rotor assembly out of the pump housing.
3. Rinse the impeller/rotor assembly and clean the cavity with clean water. If breakage or damage is found, contact your local retailer for parts.

REPLACEMENT PARTS

For parts or additional help with your new product, please contact Alpine Customer Service.

CAUTION



- **Always unplug the pump from the electrical outlet before cleaning or handling.**
- **Use with clean water only. Do not place the fountain or its parts in any other liquid.**
- **Periodically change the water and clean the pump to keep it free from microorganisms.**
- **In freezing weather, or if the fountain will not be used for an extended period, disconnect it and store it in a dry place.**
- **Do not lift, carry, or pull the pump by the power cord.**
- **Always connect this fountain to a covered Class A GFCI receptacle with an enclosure that is weatherproof with the attachment plug cap inserted or removed.**
- **Do not exceed the maximum voltage and wattage on transformer.**
- **NEVER LET THE PUMP RUN DRY.**

ALSO AVAILABLE FROM ALPINE

- **Fountain Care Formula.....PPL102**
Foam and scale remover for indoor and outdoor fountains.
- **Americana® UV Acrylic Sealer.....RRR106**
Provides protective clear coating for all painted surfaces.
- **Touch Up Paint KitRTD102**
Includes primer, thinner, 7 paint colors, applicator, and sealer.

LIMITED WARRANTY INFORMATION

Thank you for choosing an Alpine product! We aim to please with our wide range of products including Fountains, Birdbaths, Statuary, Pond Supplies & More. All of our products are constructed from the highest quality materials. In the event that we have not achieved our usual standard of excellence, we will repair or replace, at our discretion, within the warranty period. A valid proof of purchase, with the purchase date clearly indicated, must be provided. Photos of defective merchandise will also be required to help distinguish the actual cause of the defect. Please read below for a detailed description of warranty coverage.

Water Damage

Alpine products are not manufactured to withstand extreme temperatures. Improper storage that allows water to freeze within a product may cause damage, is considered negligence, and will not be covered under this warranty. The use of "hard water," and/or caustic cleaners, can affect the painted or other finishes. Failure to keep the unit clean, and use of such additives/cleaners, will also void the warranty. Please note: for fountains, it is normal for some splashing to occur and protecting the immediate surfaces is not the responsibility of Alpine Corporation.

Paint & Color (Retention and/or Loss)

The use of water will cause natural erosion to the color. This area can be touched up using standard paint. The paint is designed to protect the entire finish against breakdown of color. As with any product, all finishes with time will gradually fade and discolor. The warranty will only cover against severe or complete fading, within the first year from date of purchase, with the above exclusion.

Procedure/Service

Should a warranty/claim be needed, you should contact the retailer from whom you purchased the product. If that is not an option, you can contact Alpine Corporation at www.alpine4u.com. When contacting Alpine Corporation, you must be prepared to show proof of purchase, provide photographs and any other information needed to validate your claim. This may be necessary to distinguish between a partial or complete replacement of a defective product. The warranty does not cover any items with multiple parts; the warranty will ONLY cover the individual component of the unit/item that may be defective. Replacement parts can be made available to a consumer through the original selling party, or an approved parts retailer. If this is not an option, contact our customer service department. ***Item is covered under two year limited warranty from the date of purchase. If your purchase was after our 30-day grace period, payment information will be requested for shipping charges.***

Not Covered Under Warranty

The limited warranty will NOT cover cases of damages due to:

1. Inadequate care and/or neglect
2. Environmental and/or natural elements
3. Immersion in water, unless specified
4. Improper Installation/Storage and/or Maintenance

This warranty is void if the product has been damaged by accident, misuse, negligence, improper installation and/or modifications have occurred. This includes any and/or all defects arising out of freezing water damage, hard water damage, failure to keep the unit clean and free of harmful additives such as bleach, chlorine, etc.... which affects the paint and/or parts. This warranty also does not cover any additional charges or installation, removal, disposal and/or shipping costs or consequential damage associated with any warranty claim.

FCC Statement

This equipment has been tested and found to comply with the limits for a Class B digital device, pursuant to Part 15 of the FCC Rules. These limits are designed to provide reasonable protection against harmful interference in a residential installation. This equipment generates, uses, and can radiate radio frequency energy and, if not installed and used in accordance with the instructions, may cause harmful interference to radio communications.

However, there is no guarantee that interference will not occur in a particular installation. If this equipment does cause harmful interference to radio or television reception, which can be determined by turning the equipment off and on, the user is encouraged to try to correct the interference by one or more of the following measures:

- Reorient or relocate the receiving antenna.
- Increase the separation between the equipment and receiver.
- Connect the equipment into an outlet on a circuit different from that to which the receiver is connected.
- Consult the dealer or an experienced radio/TV technician for help.

Caution: Changes or modifications not expressly approved by the party responsible for compliance could void the user's authority to operate the equipment.

This device complies with Part 15 of the FCC Rules. Operation is subject to the following two conditions: (1) This device may not cause harmful interference, and (2) this device must accept any interference received, including interference that may cause undesired operation.

RF Exposure Information

This equipment complies with FCC radiation exposure limits set forth for an uncontrolled environment. This equipment should be installed and operated with minimum distance 8" (20cm) between the radiator and your body.

Purchased your product online?

We would really appreciate it if you can share your experience with others by reviewing our product on the website from which you purchased.

