

installation instructions:

# Faux Wood Flex Beam Strap

## SAFETY INSTRUCTIONS

Make sure to use the correct tools recommended.

Wear proper protective gear.

Follow power tool and adhesive instructions, and user manuals.

Use common sense and follow good construction practices.

### TOOL & MATERIAL CHECKLIST

- ☐ tape measure, straight edge
- ☐ adhesive (for bonding to rubber)
- ☐ pen or sharpie
- ☐ scissors or shears
- ☐ utility knife
- ☐ hammer or nail gun
- ☐ nails

### STEP BY STEP INSTRUCTIONS

1. Measure the width of the beam.
2. Cut the strap to fit. Bend the strap around the beam and find the corners. Mark the corners with lines on the back side of the strap.

3. Using a utility knife, cut a wedge or triangular notch into the strap where your lines are. Be careful not to cut all the way through. The cut will allow the strap to bend tightly around the corner of the beam.

*NOTE: For larger radius corners scoring the back of strap at the corner lines with several cuts is recommended. And for very large radius corners, no cuts are necessary.*

4. Apply a bead of construction adhesive to the back of the strap. Make sure to put adhesive in the wedge too. Do not apply adhesive near the edge.
5. Fit or fold the strap around the beam and make sure the strap is square. Make any necessary cuts as needed.
6. Place strap in desired location around the beam and press firmly to adhere the adhesive. Nail strap on bottom corners first. Then nail one side and then the other, until the strap is secure. At ground level make sure the strap lays flat. Dot/color the nail heads with a black permanent marker.

### SPECIAL INSTRUCTIONS AND NOTES

- Cut strap to required length to wrap around the three sides of your beam.
- Depending on your installation method, you will have to choose the correct adhesive, but we recommend a quality instant adhesive for rubber bonding.

### EXAMPLE INSTALLATION DIAGRAMS

1)



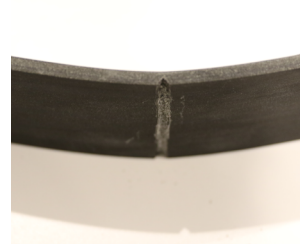
2)



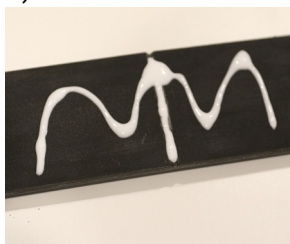
3)



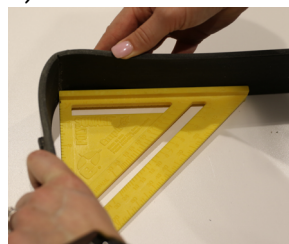
3)



4)



5)



6)



Industry leading manufacturer of urethane, PVC, wood, rustic, and metal millwork