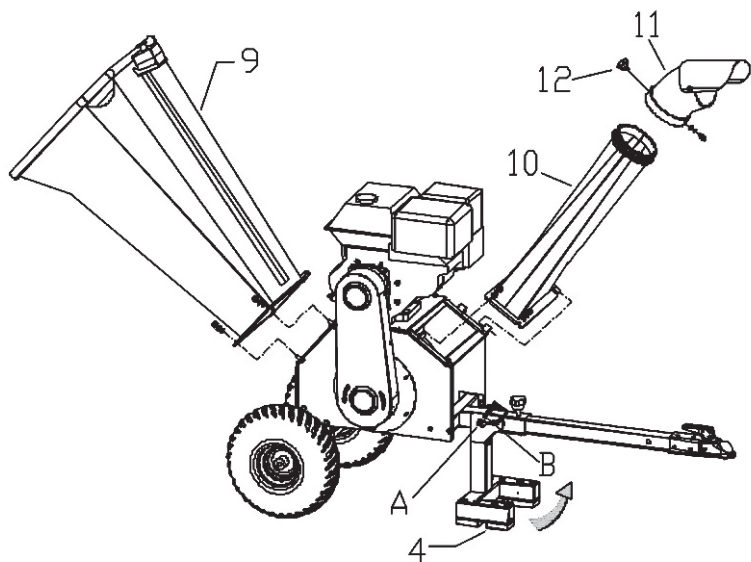


Serial Number	1	2	3	4	5	6	7	8
description	frame	wheel	axle stand	support frame	joint pipe	tow bar	knob	D-pin

Installation procedure: first, lay the frame 1 on a elongated support or platform that is about 30cm high from the ground, and leave some space at the sides of the frame for the installing of the wheel2 and support frame 4, as it is showed in the pic, fix wheel2 with suitable fasteners to axle stand3, then fix the finished structure to frame1. Install joint pipe5 to the corresponding position on the frame, and then connect and fix support frame 4 and joint pipe5&D-pin,and mount tow bar6 and knob7.After the installation is complete, the elongated support or platform can be removed and step into next phase.

Pic2. Feed Hopper and Out let Hopper Installation



Serial No.	9	10	11	12
description	feed hopper	lower part of outlet hopper	Upper part of outlet hopper	knob

- 1.Connect the hinger of lower part of outlet hopper10 to the one on the frame with screw nut, then put the upper part11 on the lower part10 with bolts and knob12.
- 2.Connect the hinger of feed hopper9 to the one on the frame with screw nut.
- If support feet 4 needs to be folded, pull D-pin out (at the A area) to the hole(at the B area)