

rely™



Smoke Alarm Model 7500 Battery Model 7600 Hardwire User Manual

THIS EQUIPMENT SHOULD BE INSTALLED IN ACCORDANCE WITH THE NATIONAL FIRE PROTECTION ASSOCIATION'S STANDARD 72 (National Fire Protection Association, Battery March Park, Quincy, MA 02269).



Intertek
Conforms to UL STD 217
5020949



- a) Typical installation drawing layouts for the unit(s), indicating recommended locations, which shall be in accordance with the applicable requirements outlined in the following:
- C22.1-12, Canadian Electrical Code, Part I, Safety Standard for Electrical Installations;
 - CAN/ULC-S553, Standard for Installation of Smoke Alarms. The National Fire Protection Association (NFPA) and the manufacturer recommend replacing this alarm ten years from the date code on back of alarm. This instruction manual contains important information on starting operation and using the device.

Please take a few minutes to thoroughly read the instruction manual and familiarize yourself and your family with its operation. And save it for future reference.

Table of Contents

1. What to do if the smoke alarm sounds.....	1
2. Product important information.....	1
3. Alarm activation.....	2
4. Installation instructions.....	2
5. Understanding your smoke alarm.....	4-6
6. General Maintenance.....	6
7. Alarm deactivation and disposal.....	6-7
8. Product specifications.....	7
9. Recognizing nuisance alarms.....	7
10. Warranty information.....	7
11. Warranty card.....	7
12. Manufacturer and customer service information.....	7

1. What to Do if the Smoke Alarm Sounds

Smoke alarm pattern is three long beeps with voice "Danger!, Smoke!, Evacuate Now!", a 1.5 second pause, and three long beeps repeating.

1.1 What to do in case of fire.

- Do not panic, stay calm.
- Leave the building as quickly as possible. Touch doors to feel if they are hot before opening them. Use an alternate exit if necessary. Crawl along the floor, and do not stop to collect anything.
- Meet at a pre-arranged meeting place outside the building.
- Call the fire department or 911 from outside the building.
- Do not go back inside a burning building. Wait for the fire department to arrive.

NOTE: These guidelines will assist you in the event of a fire, however, to reduce the chance that fires will start, practice fire safety rules and prevent hazardous situations.

1.2 Practice fire safety.

If the smoke alarm sounds, and you have not pushed the test button, it is warning of a dangerous situation, your immediate response is necessary. To prepare for such occurrences, develop family escape plans, discuss them with all household members, and practice them regularly.

- Expose everyone to the sound of a smoke alarm device and explain what the sound means.
- Determine two exits from each room and an escape route to the outside from each exit.
- Teach all household members to touch the door and use an alternate exit when the door is hot, instruct them not to open the door if it is hot.
- Teach household members to crawl along the floor to stay below dangerous smoke, fumes and gases.
- Determine a safe meeting place for all members outside the building.

2. Product Important Information

WARNING! - THIS PRODUCT IS INTENDED FOR USE IN ORDINARY INDOOR RESIDENTIAL AREAS. IT IS NOT DESIGNED TO MEASURE COMPLIANCE WITH COMMERCIAL AND INDUSTRIAL STANDARDS.

CAUTION! - This smoke alarm will not protect against the risk of smoke and fire when the battery has drained.

WARNING! - Installation of the alarm should not be used as a substitute for proper installation, use and maintenance of fuel burning appliances including appropriate ventilation and exhaust systems.

CAUTION! - This device should be installed by a competent person.

There are situations where a smoke alarm may not be effective to protect against fire as stated in the NFPA Standard 72. For instance: a) Fires where the victim is intimate with a flaming initiated fire; for example, when a person's clothes catch fire while cooking; b) Fires where the smoke is prevented from reaching the smoke alarm due to a closed door or other obstruction; c) Incendiary fires where the fire grows so rapidly that an occupant's egress is blocked even with properly located smoke alarms.

WARNING! - Smoke alarms are not to be used with smoke alarm guards unless the combination has been evaluated and found suitable for that purpose.

WARNING! - This smoke alarm requires a continuous supply of electrical power - it will not work without power.

WARNING! - This product is intended for use in ordinary indoor locations of family living units. It is not designed to measure compliance with Occupational Safety and Health Administration (OSHA) commercial or industrial standards.

1) The TEST/SILENCE button accurately tests the device functions. Do not use any other test method. Test the device weekly to ensure proper operation. Do not install in non-residential buildings. And the device is not a substitute for a complete alarm system.

2) If you're sure it isn't a real alarm, open windows or fan the air around the device to silence it.

3) Observe and follow all local and national electrical and building codes for installation.

4) This smoke alarm is designed to be used inside a single family only. In multifamily buildings, each individual living unit should have its own smoke alarm devices.

5) Install a smoke alarm in every room and on every level of the home. Smoke may not reach the smoke alarm for many reasons. For example, if a fire starts in a remote part of the home, on another level, in a chimney, wall, roof, or on the other side of a closed door, smoke may not reach the device in time to alert household members. This smoke alarm will not promptly detect a fire or smoke danger except in the area or room in which it is installed.

6) This smoke alarm may not alert every household member every time. The alarm horn is loud in order to alert individuals to a potential danger. However, there may be some circumstances where a household member may not hear the alarm (i.e. outdoor or indoor noise, sound sleepers, drug or alcohol usage, the hard of hearing, etc.). If you suspect that this device may not alert a household member, you should install and maintain other specialty smoke alarm devices. Household members must hear the alarm's warning sound and quickly respond to it to reduce the risk of damage, injury, or death that may result from fire. If a household member is hard of hearing, install other special smoke alarms with lights or vibrating devices to alert occupants.

7) This smoke alarm can only alarm when it has detected smoke or detected combustion particles in the air. This alarm does not sense heat, flame, or other gas. The device is designed to give audible warning of a developing fire. However, many fires are fast - burning, explosive, or intentional, and others are caused by carelessness or safety hazards. In these cases, smoke may not make the unit alarm quickly enough to ensure safe escape.

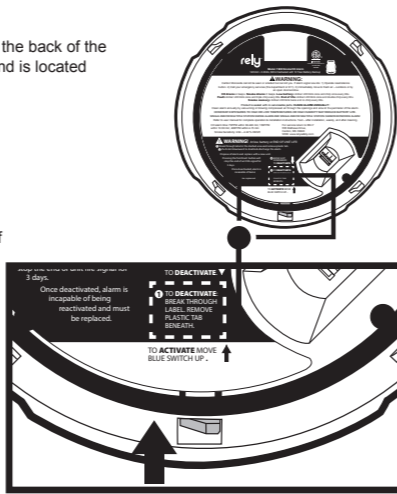
8) This smoke alarm has limitations. The device is not foolproof and is not warranted to protect lives or property from fire. Smoke alarms are not a substitute for insurance. Homeowners and renters should insure their lives and property. In addition, it is possible for the device to fail at any time. For this reason you must test the device weekly and replace every 10 years.

3. Alarm Activation

CAUTION: this unit must be activated prior to installation. Failure to properly install and activate this alarm will prevent proper operation of this alarm and will prevent its response to fire hazards.

- 1) Locate the activation tab on the back of the alarm. Tab is colored blue and is located on the bottom of the alarm.

- 2) Push the blue tab upward toward the center of the alarm. This will activate the alarm and allow it to be mounted to the bracket.



Changing Language & Room Programming

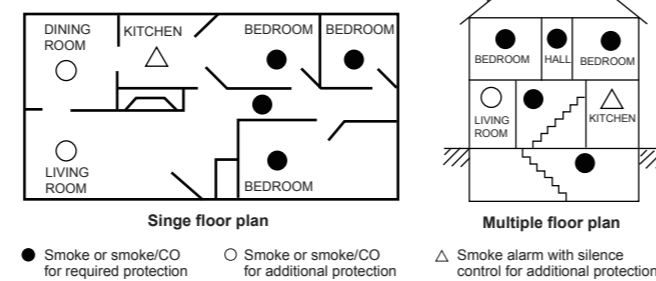
- 1) Press and release the button to start the audio messaging and options
 - a. Start the test (do nothing)
 - b. Cancel the test (press & release button)
 - c. Change language (press and hold button for 2 seconds)
- 2) When the option to press and hold the button is announced
 - a. Press and hold the button for 2 seconds to enter the menu
 - b. Menu options can be incremented by press and release of the button
 - c. Menu options can be selected by press and hold the button for 2 seconds
- 3) The first selection will be for language
 - a. The options are English (default) or Spanish
 - b. Press and release button to increment the language option
 - c. Press and hold the button for 2 seconds selects the language last announced
- 4) The next selection will be for location
 - a. The options are:
 - i. No location (default)
 - ii. Primary bedroom
 - iii. Guest bedroom
 - iv. Nursery
 - v. Hallway
 - vi. Bedroom
 - vii. Kitchen
 - viii. Living Room
 - ix. Family Room
 - x. Dining Room
 - xi. Office
 - xii. Bonus Room
 - xiii. Utility Room
 - xiv. Upstairs
 - xv. Downstairs
 - xvi. Basement
 - b. Press and release the button will increment to the next option
 - c. Press and hold the button for 2 seconds will select the last location announced

4. Installation Instructions

WARNING! - To prevent injury, this device must be securely attached to the ceiling/wall in accordance with the installation instructions.

4.1 Recommended location for alarms

The following suggestions are intended to help you with the placement and installation of your smoke alarm.

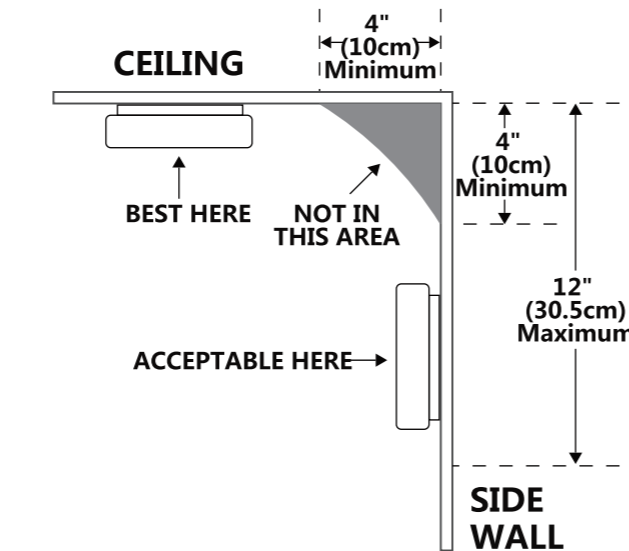


For your information, the National Fire Alarm and Signaling Code, NFPA 72, reads as follows:

29.5.1 *Required Detection.

29.5.1.1 Where required by applicable laws, codes, or standards for a specific type of occupancy, approved single- and multiple-station smoke alarms shall be installed as follows:

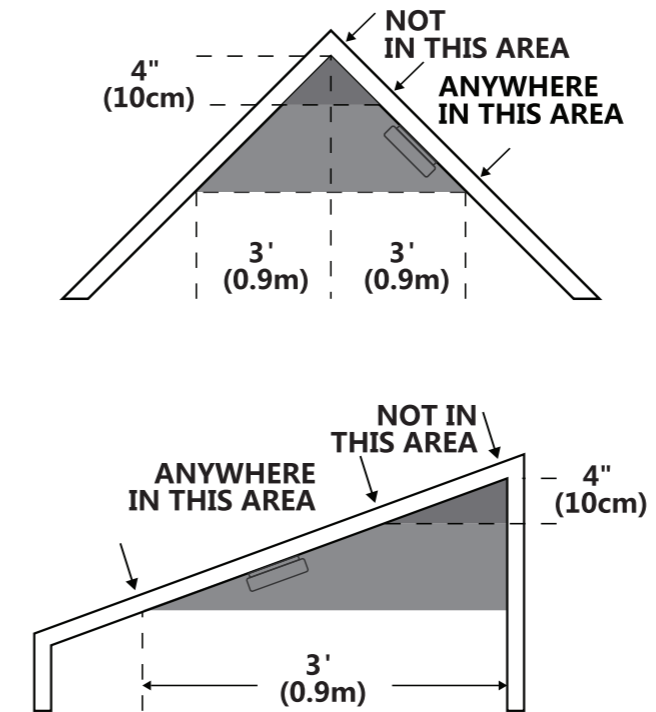
- 1) *In all sleeping rooms and guest rooms.
- 2) *Outside of each separate dwelling unit sleeping area, within 21 feet (6.4 m) of any door to a sleeping room, the distance measured along a path of travel.
- 3) On every level of a dwelling unit, including basements.
- 4) On every level of a residential board and care occupancy (small facility), including basements and excluding crawl spaces and unfinished attics.
- 5) *In the living area(s) of a guest suite.
- 6) In the living area(s) of a residential board and care occupancy.
- 7) Smoke, heat, and combustion products rise to the ceiling and spread horizontally. Mounting the smoke alarm on the ceiling in the center of the room places it closest to all points in the room. Ceiling mounting is preferred in ordinary residential construction.
- 8) The device should be at least 6 feet (1.8 m) above the floor level.
- 9) When mounting a device on the ceiling, locate it at a minimum of 4 inch (10 cm) from the side wall.
- 10) When mounting the device on the wall, use an inside wall with top edge the alarm at a minimum of 4 inch (10 cm) and maximum of 12 inch (30.5 cm) below the ceiling.
- 11) Put the device at both ends of a bedroom hallway or large room if the hallway or room is more than 30 feet (9.1 m) long.
- 12) Install the device on sloped, peaked or cathedral ceilings at or within 3 feet (0.9 m) of the highest point (measured horizontally).



4.2 Locations to avoid

To ensure the smoke alarm works properly and provides detection performance, do not install the device in the following places:

- 1) Near appliances or areas where normal combustion regularly occurs (kitchens, near furnaces, hot water heaters). Install at least 10 feet away from these areas. Use specialized smoke alarm device with unwanted alarm control for these areas.
- 2) In areas with high humidity, like bathrooms or areas near dishwashers or washing machines or directly above a sink. Install at least 10 feet away from these areas.
- 3) Avoid spraying aerosols near the device.
- 4) Next to a door or window, an extractor fan, air returns or heating and cooling supply vents. Install at least 3 feet away from these areas. The air could blow smoke away from the device, interrupting its alarm.
- 5) In rooms where temperatures may fall below 0°C or rise above 40°C, or in humidity higher than 93%. These conditions will reduce battery life or cause a false alarm.
- 6) In extremely dusty, dirty, or insect - infested areas influence particles interfere with the device operation.
- 7) In the garage. Products of combustion are present when you start your automobile.
- 8) In an enclosed space (for example in a cupboard or behind a curtain).
- 9) Where it can be obstructed (for example by furniture).
- 10) Less than 4 inches (10 cm) from the peak of an "A" frame type ceiling.
- 11) Near fluorescent lights. Electronic "noise" may cause nuisance alarms.
- 12) Place out of the reach of children. Under no circumstance should children be allowed to handle the device.
- 13) Normal cooking may cause nuisance alarms. If a kitchen alarm is desired, it should have an alarm silence feature and should not be installed within 6 feet of cooking appliances.



4.3 Installation instructions

CAUTION! - This device should be installed by a competent person.

WARNING! - This device should be located in an open and unobstructed area and shall not be located behind furniture, drapes, or any other object where it might not be seen or heard. The alarm shall be heard from all sleeping areas.

WARNING! - Alarm users should add the phone numbers of their emergency service providers and qualified technicians on the two self-adhesive labels provided by the alarm manufacturer. Users should place one label next to the alarm and another near the source of fresh air they plan to gather. When the alarm indicates the presence of smoke, the user can escape as planned. If you install only one device in your home, install the device near bedrooms, not in the basement or furnace room.

- 1) Drilling two 5.0 mm holes in the ceiling or wall, the distance between two holes center is 75 mm (2.95 inch), then inserting two plastic anchors provided into the holes.
- 2) Attach the bracket to the plastic plugs and fix tightly the screws into the plastic anchors. Do NOT over-tighten screws.
- 3) Install and rotate the alarm body on the bracket.
- 4) Test the device by using the TEST/SILENCE button. Ensure the device sound is alarm pattern.

* NOTE: ACTIVATE ALARM PRIOR TO ATTACHING MOUNTING BRACKET

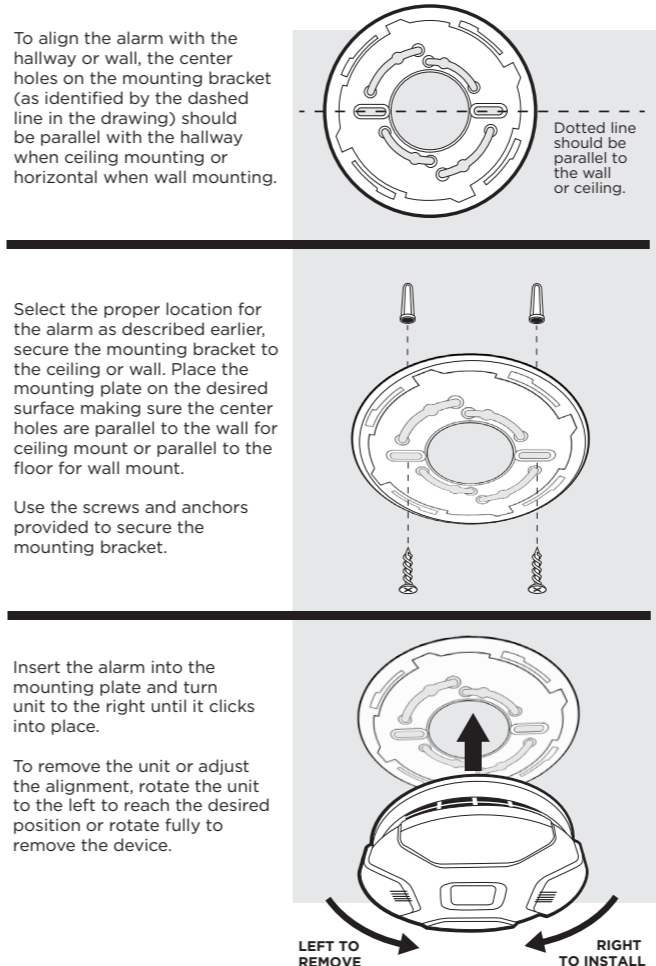
To align the alarm with the hallway or wall, the center holes on the mounting bracket (as identified by the dashed line in the drawing) should be parallel with the hallway when ceiling mounting or horizontal when wall mounting.

Select the proper location for the alarm as described earlier, secure the mounting bracket to the ceiling or wall. Place the mounting plate on the desired surface making sure the center holes are parallel to the wall for ceiling mount or parallel to the floor for wall mount.

Use the screws and anchors provided to secure the mounting bracket.

Insert the alarm into the mounting plate and turn unit to the right until it clicks into place.

To remove the unit or adjust the alignment, rotate the unit to the left to reach the desired position or rotate fully to remove the device.



4.4 Wiring Requirements for AC Alarms Only

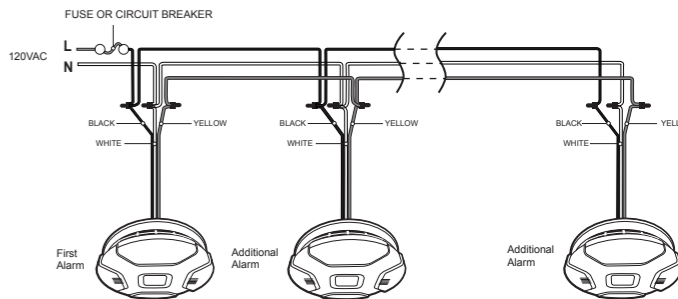
- 1) This alarm should be installed on a UL Listed or recognized junction box. All connections should be made by a qualified electrician and all wiring used shall be in accordance with articles 210 and 300.3(B) of the U.S. National Electrical Code ANSI/NFPA 70, NFPA 72 and/or any other codes having jurisdiction in your area. The multiple station interconnect wiring to the alarms must be run in the same raceway or cable as the AC power wiring. In addition, the resistance of the interconnect wiring shall be a maximum of 10 ohms.
- 2) The maximum wire run distance between the first and last unit in an interconnected system is 1000 feet.
- 3) The appropriate power source is 120 Volt AC single phase supplied from a non-switchable circuit.
- 4) Smoke alarms are not to be used with detector guards unless the combination (alarm and detector guard) has been evaluated and found suitable for that purpose.

WARNING! - The alarm cannot be operated from power derived from a square wave, modified square wave or modified sine wave, inverter. These types of inverters are sometimes used to supply power to the structure in off grid installations, such as solar or wind derived power sources. These power sources produce high peak voltages that will damage the alarm.

4.5 Wiring Instructions for Quick Connector Harness for AC Alarms Only

CAUTION: Turn off the AC power to the circuit before wiring the alarm.

- 1) For alarms that are used as single station, **DO NOT CONNECT THE YELLOW WIRE TO ANYTHING.** Leave the yellow wire insulating cap in place to make certain that the yellow wire cannot contact any metal parts or the electrical box.
 - 2) All interconnected alarms must be supplied from a single power circuit.
 - 3) The wire colors are: **Live = Black; Neutral = White, Interconnect = Yellow.** Do not connect Interconnect wires to a Live or Neutral. Improper connection will result in damage to the alarm, failure to operate, or a shock hazard. Check the connections carefully before turning on the AC power to the circuit. Please review interconnect wiring diagram below.
 - 4) Maximum number of alarms is 18 units or 12 smoke alarms and 6 non-smoke alarms.
 - 5) Make certain alarms are wired to a continuous (non-switched) power line.
- NOTE:** Attaching 120VAC main power first, without activating the unit, will result in a false low battery trouble condition. The unit must first be activated before mounting to bracket to avoid false low battery notification.
- NOTE:** AC power must be connected to obtain the full 10 year battery and unit life. Constant exposure to high or low humidity or temperatures may reduce battery life.



NOTE: Use standard UL Listed household wire (as required by local codes) available at all electrical supply stores and most hardware stores.

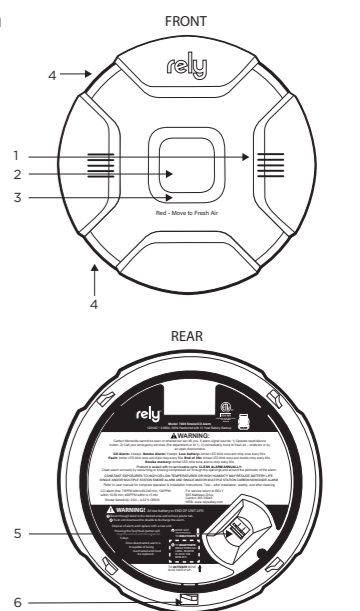
- 6) After selecting the proper location for your alarm, and wiring the QUICK CONNECTOR harness as described previously, attach the mounting bracket to the electrical box.
 - 7) Pull the QUICK CONNECTOR through the center hole in the mounting bracket and secure the bracket.
 - 8) Plug the QUICK CONNECTOR into the back of the unit, making sure that the locks on the connector snap into place. Then push the excess wire back into the electrical box through the hole in the center of the mounting bracket.
 - 9) Install the alarm fully on the mounting bracket by rotating the alarm in a clockwise direction.
 - 10) Turn on the 120VAC main power. The green LED will turn on when the alarm is operating from AC power.
 - 11) This model has AC hardware interconnect capability. When one hardwired interconnect unit sounds an alarm, all other compatible hardware or interconnected units will also alarm.
 - 12) **Single station alarms:** Test each smoke alarm. Press and release the test button until the unit alarms.
- Interconnected alarms:** Press and release the test button until the unit alarms. All interconnected alarms should sound. The other alarms sounding only tests the interconnect signal among alarms. It does not test each alarm's operation. You must test each alarm individually to check if the alarm works properly. If any unit in the series does not alarm, turn off power and recheck connections. If it does not alarm when you restore power, replace it.

WARNING! - To prevent injury, this device must be securely attached to the ceiling/wall in accordance with the installation instructions.

5. Understanding Your Smoke Alarm

Parts of Your Smoke Alarm - Model 7500/7600

1. Alarm horn/speaker (behind cover) - communicates alerts
2. Test/Silence button - use for weekly testing or to temporarily reset/silence notifications
3. LED Status Ring - provides visual confirmation of unit status
4. LED Status Backlight - provides visual confirmation of unit status
5. Connection for wire-harness (Hardwired Unit Only)
6. Activation and Deactivation Tab - on the rear of the unit



5.1 Operation and testing

- 1) **Operation**
The alarm is operating once it is powered on and testing is complete. When the product alarms, the unit sounds a loud alarm with voice messages. See sections 1 and 2 for alarm signal descriptions.
 - 2) **Testing**
Test your alarm weekly by pressing and releasing the TEST/SILENCE button. A quick beep will confirm the button has been pushed followed by the test sequence. See Other Alarm Visual and Audible Indicators table. The alarm and voice will sound if the electronic circuitry, horn, speaker, and battery are working. If the alarm or voice does not sound, or gives erratic or low volume sound, the unit must be replaced.
- WARNING!** - Due to the loudness of the alarm, always stand about 2.5 feet away from the unit or use ear protection when testing.
- WARNING!** - Do not use an open flame to test your alarm, you could damage the alarm or ignite combustible materials and start a structure fire.
- 3) **Chirping**
When End-of-Life or low battery chirping begins, you can temporarily silence these chirps by pressing the TEST/SILENCE button. See Troubleshooting Guide.
- WARNING!** - Replace unit as soon as possible when in end of unit life mode.

5.2 Other Alarm Visual and Audible Indicators

Operate mode	Visual (flash)	Audible (beep/voice)	Description mode
Power-Up/Activation	AC Power: The GREEN RING LED will turn ON continuously, and flash off every 60 seconds. DC Power Only: The GREEN RING LED will flash once upon power-up/activation.	Voice Message: "Congratulations you've just power up your alarm, please press the button to ensure that the unit is working."	None
Normal (Standby)	The GREEN RING LED will flash once every 60 seconds.	None	None
Test	HALO and RING LED's will flash RED at the same time as the audible smoke alarm.	Voice Message: "You've started a test of this alarm, this test will be loud. You can press the button again if you'd like to stop the test. Or press and hold the button for two seconds to change the language. Or let the countdown finish and the test will start." "3", "2", "1" "Testing" 3 Beeps Voice Message: "Danger" 3 Beeps Voice Message: "Smoke" 3 Beeps Voice Message: "Evacuate immediately, call 911." "The test is complete."	Upon pressing the "TEST/SILENCE" button, the alarm will play a voice message informing the user that the test is about to start. This message will be followed by countdown messages ("3", "2", "1") and then a message saying the test is beginning.
Smoke Alarm	HALO and RING LED's will flash RED at the same time as the audible smoke alarm.	3 Beeps Voice Message: "Danger" 3 Beeps Voice Message: "Smoke" 3 Beeps Voice Message: "Location" (if assigned) 3 Beeps Voice Message: "Evacuate now"	HALO and RING LED flashes and audible alarm patterns are synchronized to appear concurrently.
Smoke Alarm Silence Mode	The HALO and RING LED's will flash RED in a smoke pattern to indicate a smoke alarm condition.	Voice Message: "Your alarm is in silence mode, if the level of smoke once again reaches a dangerous level your unit will go back into alarm, please follow those directions." If smoke levels are above a HIGH SMOKE threshold, the alarm cannot not be silenced.	The HALO and RING LED's will flash RED in a smoke pattern to indicate a smoke alarm condition A silenced alarm will continue to blink indications. Pressing the "TEST/SILENCE" button while the alarm is in Smoke Alarm will silence the smoke alarm for 9 minutes.
Local Smoke Alarm Memory Mode	The HALO LED flashes AMBER 2 times every 60 seconds.	Voice Message: "Smoke detected, if the level of smoke once again reaches a dangerous level your unit will go back into alarm. Your alarm has been reset."	The alarm will set the smoke memory indication when the smoke condition has cleared and returns to operational state. Smoke Memory is reset (cleared) if the user presses the "TEST/SILENCE" button or silences the alarm. Smoke memory automatically resets after 24 hours without the alarm entering a smoke alarm state.

5.3 Troubleshooting the Alarm

Operate mode	Visual (flash)	Audible (beep/voice)	Description mode
Low Battery Warning	The HALO LEDs will flash AMBER 1 time every 60 seconds	1 Chirp every 60 seconds and a voice message (audio) (Audio Low Battery Index) "The batteries in your unit are low."	Low Battery Warning may be silenced for 24 hours by pressing the "TEST/SILENCE" button. When the Low Battery Warning is silenced, a voice message (audio) "Your unit is in silence mode, the batteries in your unit are low."
Battery Not Activated	The HALO LEDs will flash AMBER 5 times every 60 seconds	5 Chirps every 60 seconds and a voice message (audio) (Audio Activation Index) "Your unit may not be activated, move the switch on the back of the unit to the activated position, press button to repeat this message." (followed by the Spanish translation)	
Smoke Sensor Fault Warning	The HALO LEDs will flash AMBER 1 time every 60 seconds	3 Chirps every 60 seconds and a Voice Message: "Your unit has experienced an error. Please replace the unit immediately. Unit will not respond to potential threats. Press the button to repeat this message"	Smoke Sensor Fault Warning faults cannot be silenced.
Temperature Fault Warning	The HALO LEDs will flash AMBER 1 time every 60 seconds	3 Chirps every 60 seconds and a Voice Message: "Warning temperature outside of normal operating range, please press the button to verify normal operation"	
End-of-Life	The HALO LEDs will flash AMBER 1 time every 60 seconds	2 Chirps every 60 seconds and a voice message: "Your unit has come to the end of its usable life." After 30 days, voice message: "Your unit is in silence mode, it has come to the end of its usable life."	Voice message can be silenced for 72 hours during the first 30 days of EOL condition.

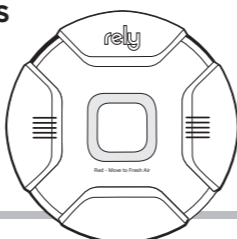
5.4 LED Notifications

ALARM LED NOTIFICATIONS

Green LED

Green LED flashes ONCE every 60 seconds.

Normal Operation: Subsequent "Test/Silence" Button press



Amber LED

Amber LED flashes once every 60 seconds and chirps twice

Amber LED flashes once every 60 seconds, no chirp, for 72 hours

Amber LED blinks once every 60 seconds and chirps 3 times.

Amber LED flashes once every 60 seconds and chirps once

Amber LED flashes once every 60 seconds for 24 hours

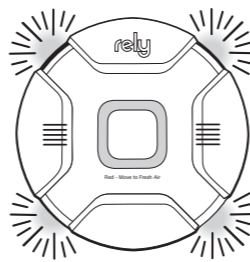
End of Unit Life (10 years after power up)

End of Unit Life in "Hush" Mode - "Test/Silence" Button has been pressed

Unit Error -Unit has gone into error for noted reason

Low Battery

Low Battery in "Hush" mode: "Test/Silence" Button has been pressed



Red LED

Red LED flashes 3 times, one second off, repeating

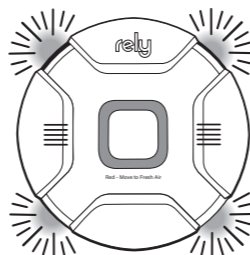
Red LED flashes 3 times, one second off, repeating

Red LED flashes 2 times, every 60 seconds

Alarm condition: Dangerous levels of smoke detected

"Hush" Mode: "Test/Silence" button has been pressed

Smoke alarm memory mode



6. General Maintenance

To keep your smoke alarm in good working order, please follow these simple steps:

1. Verify the unit's alarm sound and indicators operation by pressing the TEST/SILENCE button once a week.
2. Remove the unit from the ceiling and vacuum the alarm cover and vents with a soft brush attachment once a month to remove dust and dirt.
3. Never use detergents or other solvents to clean the unit.
4. Avoid spraying air fresheners, hair spray, or other aerosols near the device.
5. Do not paint the device. Paint will seal the vents and interfere with the sensor's ability to detect smoke. Never attempt to disassemble the unit or clean inside. This action will void your warranty.
6. As soon as possible, place the smoke alarm back in its proper location to assure continuous protection from fire and smoke.
7. When household cleaning supplies or similar contaminants are used, the area should be ventilated.

WARNING! -The following substances can affect the sensor and may cause false actions: methane, propane, isobutene, isopropanol, ethylene, benzene, toluene, ethyl acetate, hydrogen sulfide, sulfur dioxides, alcohol based products, paints, thinner, solvents, adhesives, hair sprays, after shaves, perfumes and some cleaning agents.

WARNING! -Your combo smoke alarm will not be operational and will not monitor for smoke without AC power or sealed battery backup.

7. Alarm Deactivation and Disposal

When the battery is at end of life, an intermittent "chirp" with amber LED flashes once every 60 seconds: indicating that the smoke alarm device is in low battery mode. Please scrap it according to the steps below and immediately buy another new alarm to replace it.

- 1) Locate the deactivation area on the back of the alarm. Area is identified by the dashed lines near the bottom of the unit.



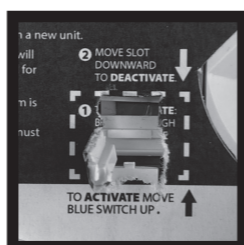
- 2) Use a flat head screwdriver to puncture the label within the dashed lines.



- 3) Use the screwdriver to break off or move the plastic tab to the side. A firm twisting motion using the screwdriver should be sufficient to break the tab. Use your hand to move the tab to the side.

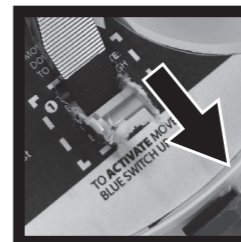


The deactivation switch should now be visible.



- 4) Use the screwdriver to move the switch downward. This will disable and discharge the alarm. **Once deactivated alarm cannot be reactivated and must be replaced.**

Wait for at least one day, allow the battery inside the product to be fully exhausted. You can scrap and dispose of it according to local law.



8. Product Specifications

Model: 7500/7600
Product Standards: Conforms to UL STD 217 9th Ed.
Power Supply: 7500 Sealed 10 Year Life Lithium Battery
7600 120V Hardwired Sealed with 10 Year Life Lithium Battery Backup
Hardwired Interconnection Model 7600 Only: Up to 18 Alarms
Sensor of Smoke: Optical
Smoke Alarm Sensitivity: 2.64 – 4.22% OBS/ft
Smoke Alarm Silence: About 8 minutes
Voice Message System
Product Life: 10 years after manufacture
Temperature Operating Range: 40°F (4.4°C) to 100°F (37.8°C)
Humidity Operating range: 10–95% RH non-condensing
Audible Alarm: ≥85dB at 10ft @ 3.0 to 3.5 KHz pulsing alarm, with voice messages "Danger!", "Smoke!", "Evacuate Now!".
Storage/Transport Ambient Condition: -20~+50°C, 10~95% RH non-condensing
Low Battery Warning Silence: About 24 hours
Installation Location: Ceiling or wall
Detection Range: Max. 40 m² within a room.
Size: About 6 inches
Weight: 8 ounces

9. Recognizing Nuisance Alarms

Smoke Nuisance

SILENCE: If you know why the alarm is sounding, and you can verify that it is not a life threatening situation, you can push the button to silence the alarm for 8-10 minutes. If the smoke is not too dense, the unit will silence. After the SILENCE period, the smoke alarm will automatically reset and sound the alarm if particles of combustion are still present. You can use SILENCE repeatedly until the air has been cleared of the condition causing the alarm.

NOTE: Dense smoke will override SILENCE and sound a continuous alarm. If no fire is present, check to see if one of the reasons listed in "Locations to avoid" may have caused the alarm. If a fire is discovered, get out and call the fire department or 911.
This alarm is designed to minimize nuisance alarms. Cigarette smoke will not normally cause the unit to alarm, unless the smoke is blown directly into the alarm. Combustion particles from cooking may set off the alarm if it is located too close to a cooking appliance. Large quantities of combustible particles are generated from spills or when broiling. Using the fan on a range hood which vents to the outside (non-recirculating type) will also help prevent nuisance alarms from occurring by removing these combustible products from the kitchen.

10. Warranty Information

TEN YEAR LIMITED WARRANTY

Dear Customer,

Our products are subject to strict quality controls. However, if this device should unexpectedly not function perfectly, please contact the customer services address given on warranty service information. This is the only way for you to be able to return your device . **The warranty period is 120 months and begins on the day of purchase.** Please always keep your receipt as proof of purchase. Warranty claims can only be made for possible defects caused by material and production faults.

During the warranty period, defective devices can be sent to the service address given (post paid). You will then receive a new or repaired device back free. After the warranty period has expired you still have the possibility of sending the defective device for repair to the address given. Repairs carried out after the warranty period must be paid for. In the event of misuse or improper treatment, use of force or intervention not carried out by our authorized service branches, the warranty is no longer valid. This warranty does not restrict your legal rights.

NOTE: In the event of a warranty claim, please return the till receipt and completed warranty card with fault description together with the defective device.

11. Warranty Card

Last Name: _____
First Name: _____
Phone: _____
Address: _____
City: _____
Country: _____
Zip Code: _____
Fault description: _____
Date of purchase: _____
Signature: _____

12. Manufacturer and Customer Service Information

12.1 Manufacturer:

RELY ADDRESS:
30440 MS-41
Nettleton, MS 38858

Made in Mexico

E-MAIL: www.relysafety.com