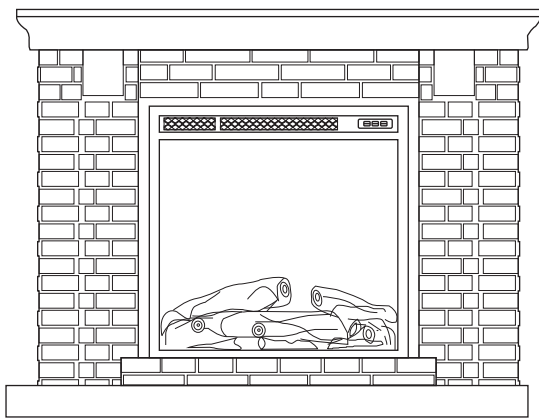


IMPORTANT INSTRUCTIONS
AND OPERATING MANUAL

ELECTRIC FIREPLACE



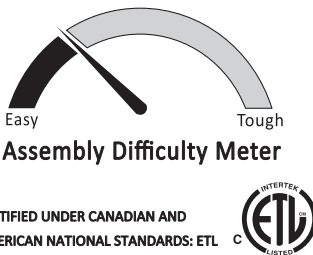
Y4926

THIS INSTRUCTION BOOKLET CONTAINS IMPORTANT SAFETY INFORMATION. PLEASE READ AND KEEP FOR FUTURE REFERENCE.

Do Not Return This Product!
Contact our customer service team for help first.
Call: 213-4467172
Or 661-4358826
(8:30am-5:30pm P.S.T.)
ROWAN ELECTRIC APPLIANCE LLC 28407 Accent Way,
Santa Clarita, CA 91350

WARNING

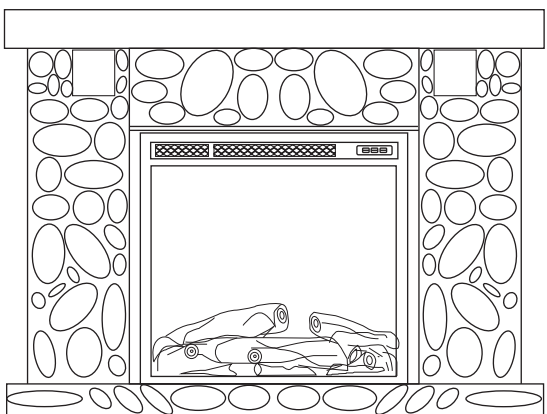
- Unit can tip over causing severe injury or death.
- Anchor unit to stud in wall (if instructed to).
- Do Not allow children to climb on unit.
- Put heavy items on lower shelves or drawers.



-1-

IMPORTANT INSTRUCTIONS
AND OPERATING MANUAL

ELECTRIC FIREPLACE



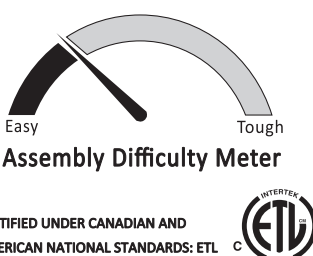
Y4928

THIS INSTRUCTION BOOKLET CONTAINS IMPORTANT SAFETY INFORMATION. PLEASE READ AND KEEP FOR FUTURE REFERENCE.

Do Not Return This Product!
Contact our customer service team for help first.
Call: 213-4467172
Or 661-4358826
(8:30am-5:30pm P.S.T.)
ROWAN ELECTRIC APPLIANCE LLC 28407 Accent Way,
Santa Clarita, CA 91350

WARNING

- Unit can tip over causing severe injury or death.
- Anchor unit to stud in wall (if instructed to).
- Do Not allow children to climb on unit.
- Put heavy items on lower shelves or drawers.



-1-

Contact Us !

DO NOT RETURN THIS PRODUCT!
Contact our friendly customer service team first for help.

Call: 213-4467172
Or 661-4358826
(8:30am-5:30pm P.S.T.)

DATED PROOF OF PURCHASE REQUIRED FOR WARRANTY SERVICE.

[Helpful Hints]

PEOPLE NEEDED FOR ASSEMBLY: 1-2
ESTIMATED ASSEMBLY TIME: 1 HOUR

- Open your item in the area you plan to keep it to avoid excessive heavy lifting.
- Identify, sort and count the parts before attempting assembly.
- Make sure to always face the point on the top of the Cam Lock towards the outer edge.
- Use all the nails provided for the back panel and spread them out equally.
- Back panel must be used to make sure your unit is sturdy.
- Do NOT use harsh chemical or abrasive cleaner on this item.
- Never push, pull, or drag your furniture.



-2-

Contact Us !

DO NOT RETURN THIS PRODUCT!
Contact our friendly customer service team first for help.

Call: 213-4467172
Or 661-4358826
(8:30am-5:30pm P.S.T.)

DATED PROOF OF PURCHASE REQUIRED FOR WARRANTY SERVICE.

[Helpful Hints]

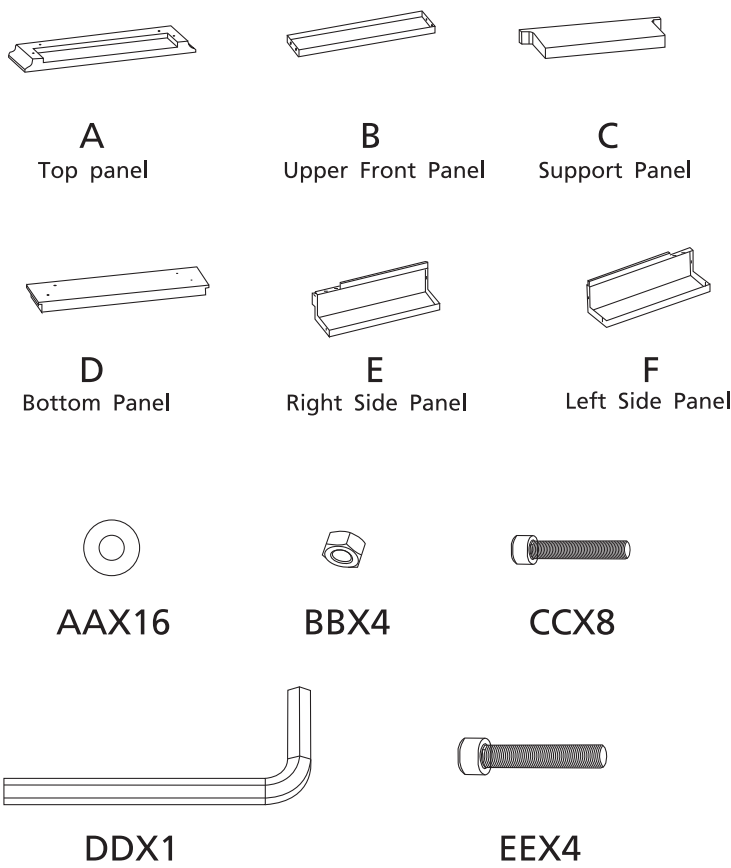
PEOPLE NEEDED FOR ASSEMBLY: 1-2
ESTIMATED ASSEMBLY TIME: 1 HOUR

- Open your item in the area you plan to keep it to avoid excessive heavy lifting.
- Identify, sort and count the parts before attempting assembly.
- Make sure to always face the point on the top of the Cam Lock towards the outer edge.
- Use all the nails provided for the back panel and spread them out equally.
- Back panel must be used to make sure your unit is sturdy.
- Do NOT use harsh chemical or abrasive cleaner on this item.
- Never push, pull, or drag your furniture.



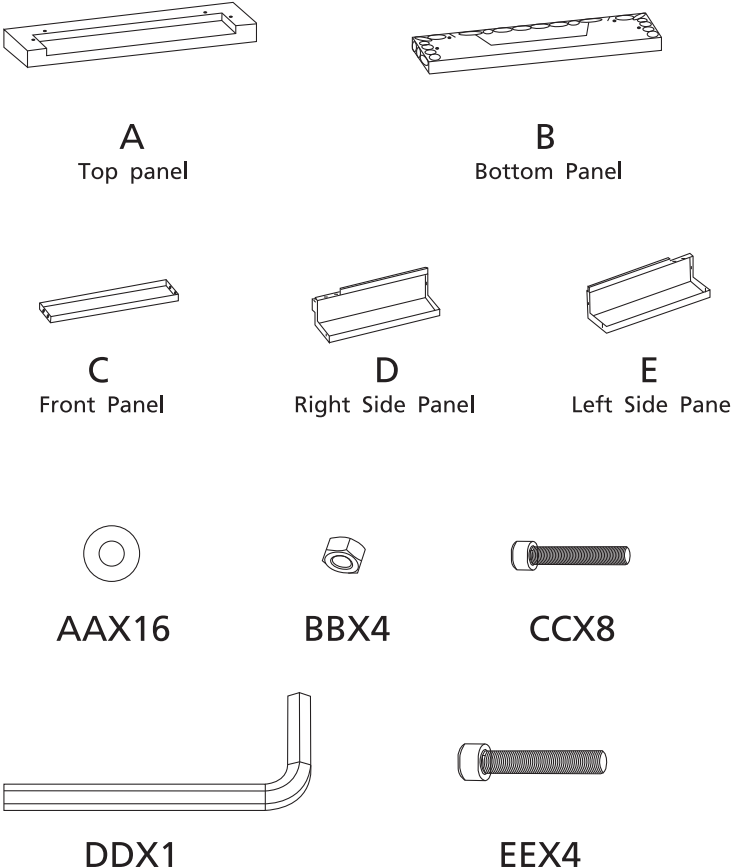
-2-

PACKING LIST



-3-

PACKING LIST

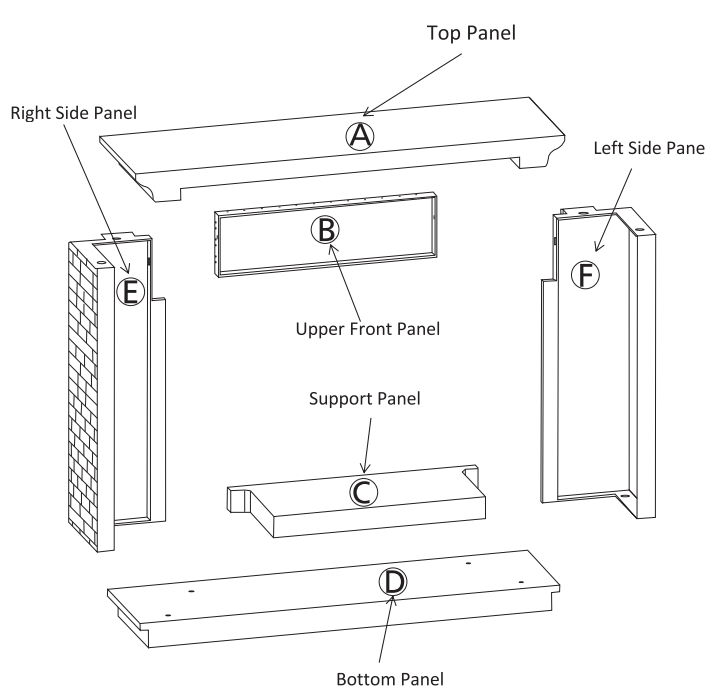


-3-

正背套 正面 咬口 黑 2022.3.24

ASSEMBLY

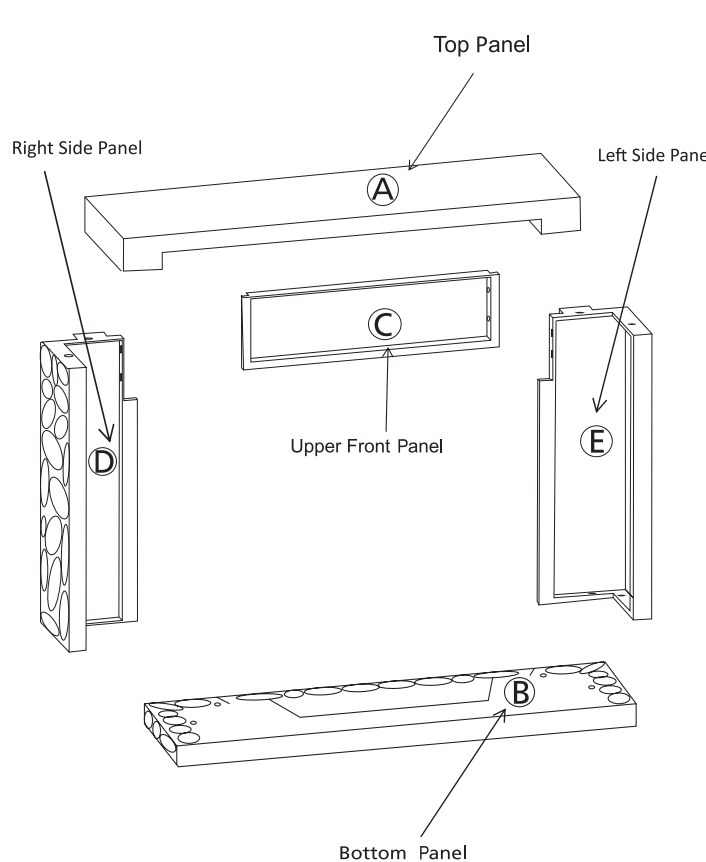
Before installing this fireplace, please read the following steps carefully.



-4-

ASSEMBLY

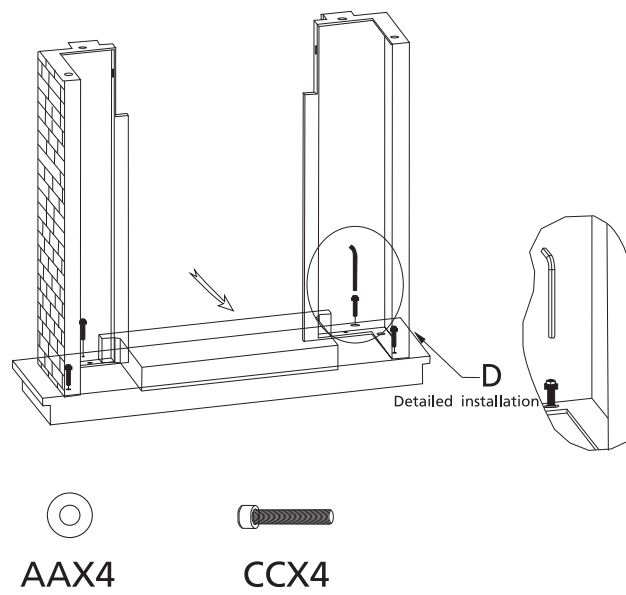
Before installing this fireplace, please read the following steps carefully.



-4-

STEP 1:

Install the two side panels and bottom front panel onto the support panel with hexagon wrench as shown in the picture.



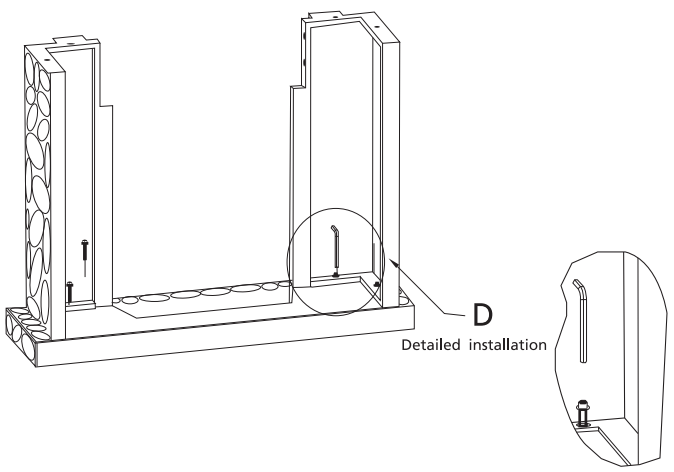
AAX4 CCX4

Note: Do not tighten screws completely at this step.

-5-

STEP 1:

Install the two side panels onto the bottom front panel with hexagon wrench as shown in the picture.



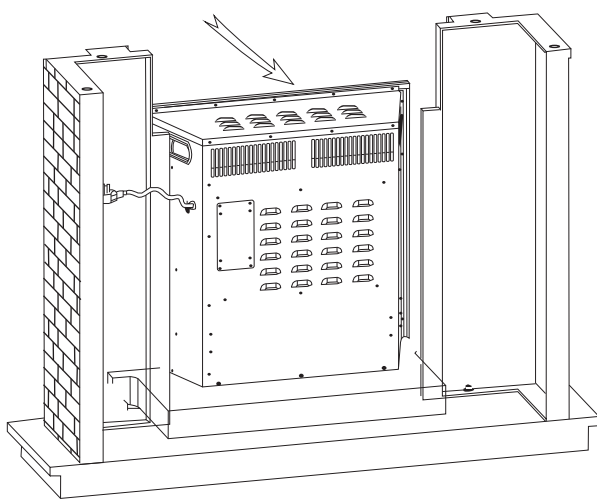
AAX4 CCX4

Note: Do not tighten screws completely at this step.

-5-

STEP 2:

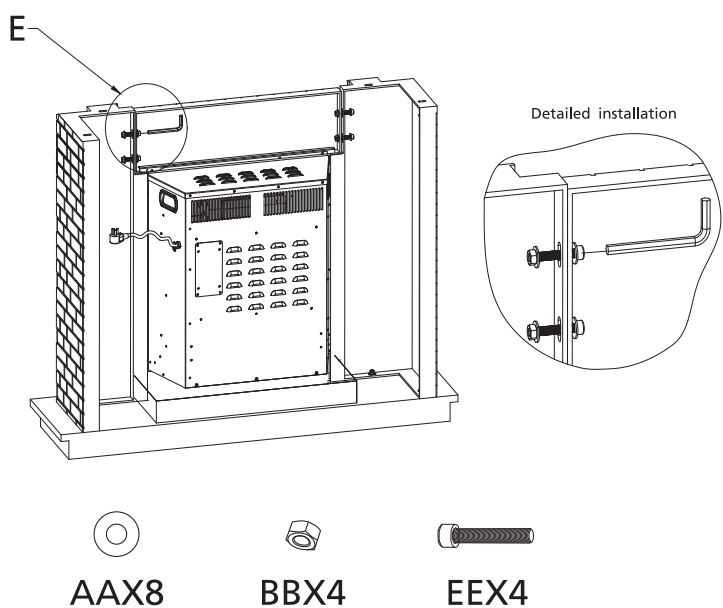
Install the heater into the panels installed in the previous step with hexagon wrench as shown in the picture.



-6-

STEP 3:

Install the upper front panel onto the panels installed in the previous step with hexagon wrench as shown in the picture.



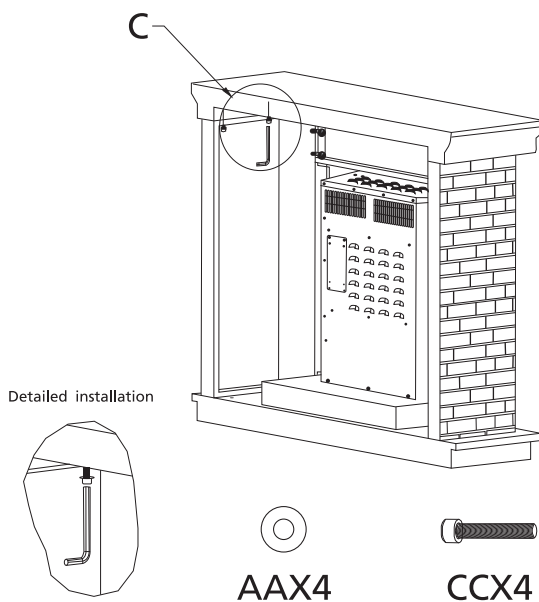
AAX8 BBX4 EEX4

Note: Do not tighten screws completely at this step.

-7-

STEP 4:

Install the top panel onto the panels installed in the previous step with hexagon wrench as shown in the picture.

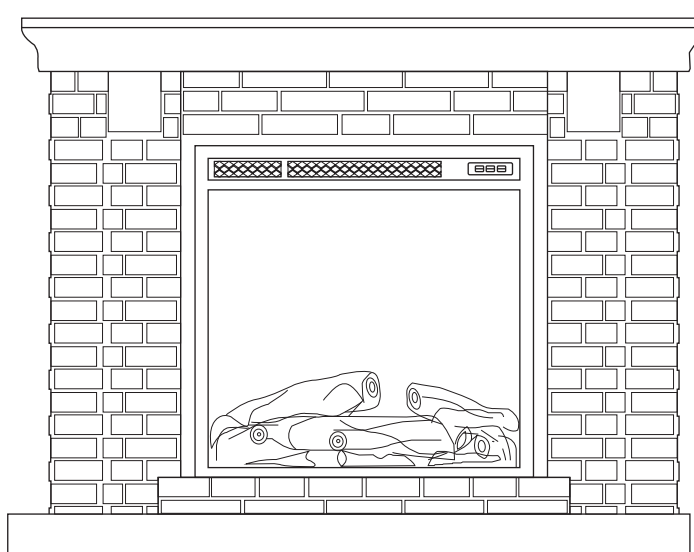


AAX4 CCX4

Note:Tighten all the screws completely after assembly.

-8-

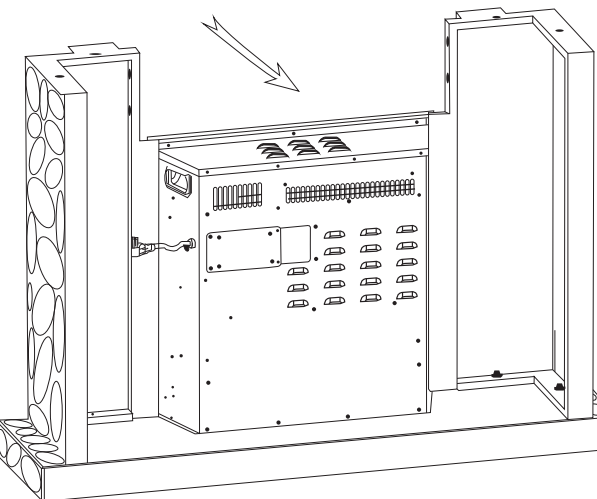
FINISHED:



-9-

STEP 2:

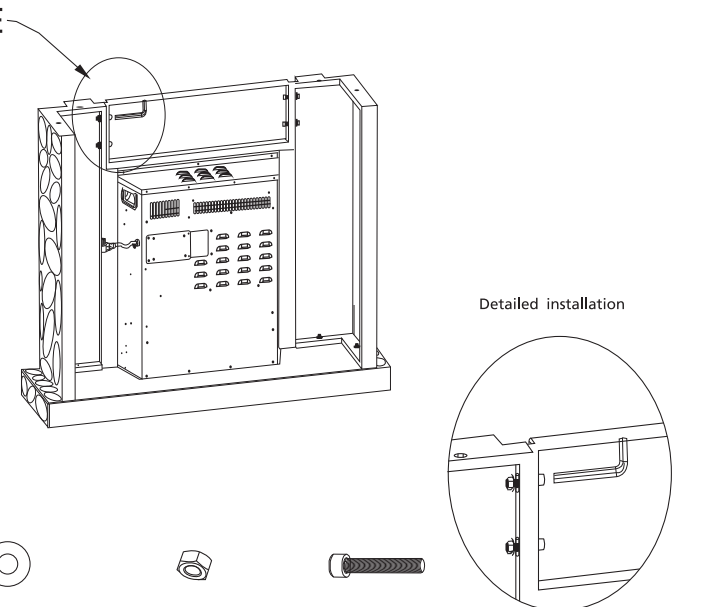
Install the heater into the panels installed in the previous step with hexagon wrench as shown in the picture.



-6-

STEP 3:

Install the upper front panel onto the panels installed in the previous step with hexagon wrench as shown in the picture.



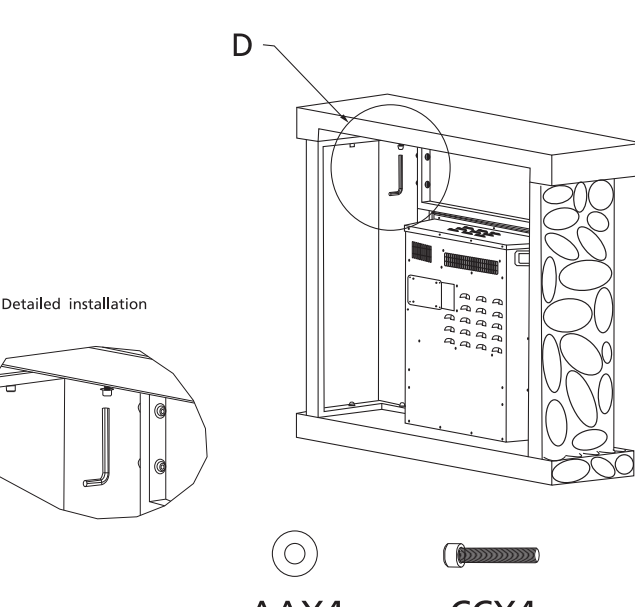
AAX8 BBX4 EEX4

Note: Do not tighten screws completely at this step.

-7-

STEP 4:

Install the top panel onto the panels installed in the previous step with hexagon wrench as shown in the picture.



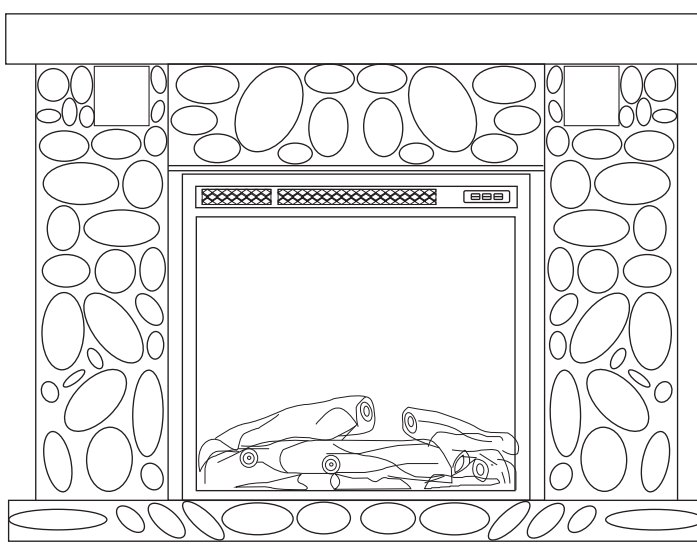
AAX4 CCX4

Note:Tighten all the screws completely after assembly.

-8-

正背套 背面 咬口 黑 2022.3.24

FINISHED:



-9-

Thank you for purchasing this product! If you have any questions about the product, such as missing parts, damaged products, product assembling, and operation, please contact us via Amazon Message or customer service number: 213-4467172 or 661-4358826

IMPORTANT
Please call our customer service department for any consulting:
213-4467172
661-4358826
(8:30am-5:30pm P.S.T.)
DATED PROOF OF PURCHASE IS REQUIRED FOR WARRANTY SERVICE.
AVIS
Veuillez appeler le service à la clientèle pour toutes questions au:
213-4467172
661-4358826
(8:30am-5:30pm P.S.T.)
PREUVE D'ACHAT ORIGINALE REQUISE POUR SERVICE DE GARANTIE.
IMPORTANTE
Sólo hay que llamar nuestro departamento de servicio al cliente en caso de tener preguntas o inquietudes:
213-4467172
661-4358826
(8:30am-5:30pm P.S.T.)
SE REQUIERE PRUEBA DE COMPRA CON FECHA PARA SERVICIO BAJO GARANTÍA.
Address: ROWAN ELECTRIC APPLIANCE LLC 28407 Accent Way, Santa Clarita, CA 91350
Phone: 213-4467172 or 661-4358826

Thank you for purchasing this product! If you have any questions about the product, such as missing parts, damaged products, product assembling, and operation, please contact us via Amazon Message or customer service number: 213-4467172 or 661-4358826

IMPORTANT
Please call our customer service department for any consulting:
213-4467172
661-4358826
(8:30am-5:30pm P.S.T.)
DATED PROOF OF PURCHASE IS REQUIRED FOR WARRANTY SERVICE.
AVIS
Veuillez appeler le service à la clientèle pour toutes questions au:
213-4467172
661-4358826
(8:30am-5:30pm P.S.T.)
PREUVE D'ACHAT ORIGINALE REQUISE POUR SERVICE DE GARANTIE.
IMPORTANTE
Sólo hay que llamar nuestro departamento de servicio al cliente en caso de tener preguntas o inquietudes:
213-4467172
661-4358826
(8:30am-5:30pm P.S.T.)
SE REQUIERE PRUEBA DE COMPRA CON FECHA PARA SERVICIO BAJO GARANTÍA.
Address: ROWAN ELECTRIC APPLIANCE LLC 28407 Accent Way, Santa Clarita, CA 91350
Phone: 213-4467172 or 661-4358826

-10-