

Ruff Weather Pet Door Flap Replacement Instructions

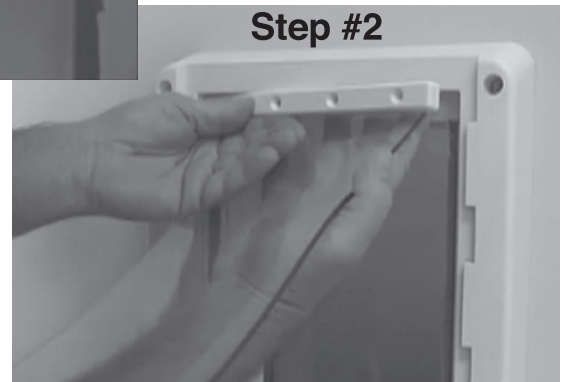
Tools Required

Safety Goggles • Phillips Screwdriver

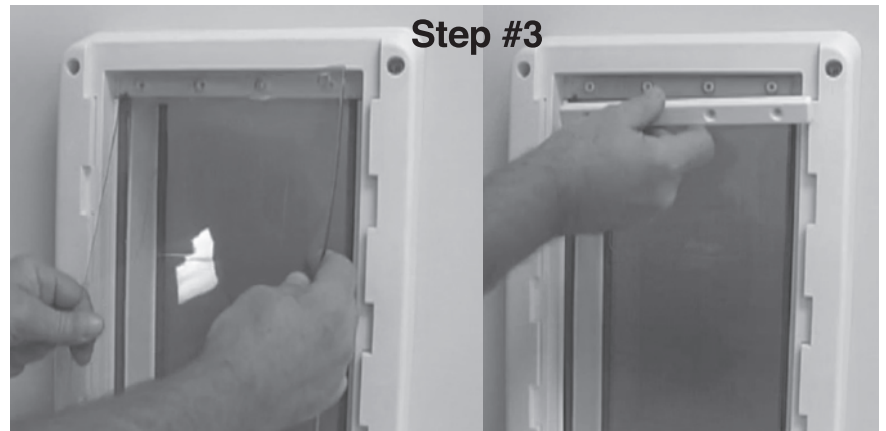
Step #1: Unscrew the flap retainer bar screws. Remove screws and save.



Step #2: Reach behind the flap and pull gently to detach the old flap and retainer bar. Save retainer bar.



Step #3: Install the new flap. Make sure to trap the flap between the frame and retainer bar.



Step #4: Replace the screws and tighten.



NOTE: Both flaps can be replaced this way. There is no need to remove the frames at any time.

As with any home improvement project, if you do not have the tools or skills to properly replace your pet door flap, we suggest using a professional handyman or licensed contractor.