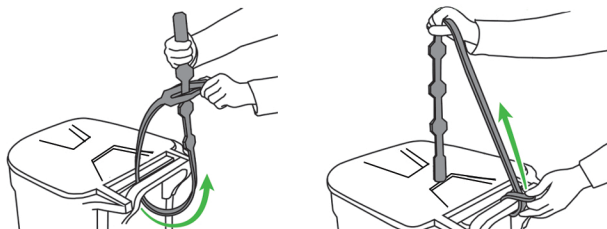


INSTALLATION INSTRUCTIONS

For Digital Instructions, Videos, and Additional Tips please visit blazerbrand.com/install

STEP 1 LOOP

Loop the rubber strap around the handle of your garbage can.

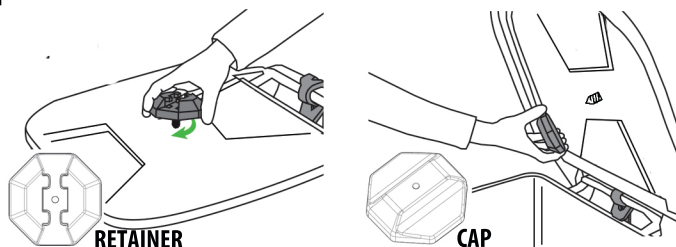


STEP 2 SCREW

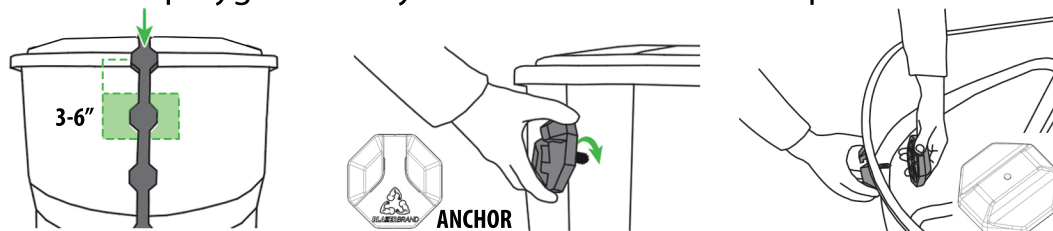
Self-Drilling Screws (No Tools Required)
Twist parts back and forth while pushing down.



2A. Screw the retainer into your trash can's lid. Then, screw a cap onto the exposed screw inside the can.

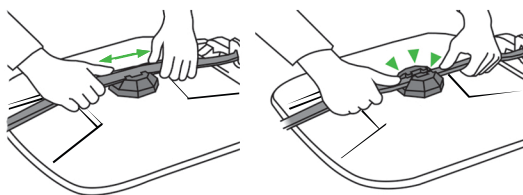


2B. Screw the anchor into the front side of your trash can, 3-6 inches below the polygon insert you'll use. Fasten with a cap on the inside.



STEP 3 SNAP

Place one side of the strap between the four prongs on the retainer. Then, stretch and snap into place.



HOW TO USE

To **Lock**, pull strap down past anchor, then slide up and in.

To **Unlock**, pull strap down and out.

Use thumb for greater control.

