

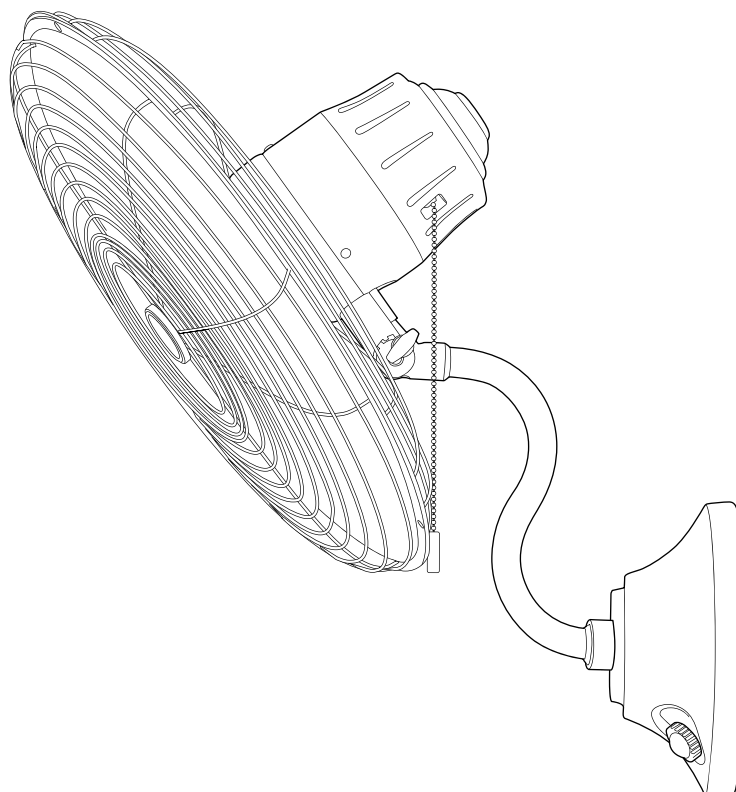
ITEM #5730159
5730169

MARINA COVE II

MODEL #JP18MWW3
JP18MBK3

Español p. 14

ATTACH YOUR RECEIPT HERE



Intertek
3170356

APPROVED FOR USE IN
DAMP LOCATIONS

Purchase Date _____



Questions, problems, missing parts?

Before returning contact us on:

800-527-1292, 8:30 a.m. - 5 p.m., CST, Monday - Friday.

TABLE OF CONTENTS

Safety Information	2
Package Contents	4
Hardware Contents	5
Preparation	5
Assembly Instructions	5
Operating Instructions	11
Care and Maintenance	12
Troubleshooting	13
Limited Lifetime Warranty	13



SAFETY INFORMATION

READ AND SAVE THESE INSTRUCTIONS

Please read and understand this entire manual before attempting to assemble, install or operate the product. Review the accompanying assembly diagrams.

- Do not discard fan carton or foam inserts. Should this fan need to be returned to the factory for repairs, it must be shipped in its original packaging to ensure proper protection against damage that might exceed the initial cause for return.
- Make sure all electrical connections comply with local codes, ordinances, the National Electrical Code and ANSI/NFPA 70-1999. Hire a qualified electrician or consult a do-it-yourself wiring handbook if you are unfamiliar with installing electrical wiring.
- After you install the fan, make sure all connections are secure to prevent the fan from falling.
- The net weight of this fan is: 21 lbs.

WARNING



To reduce the risk of fire, electrical shock or personal injury, use the metal wall mounting bracket provided with the fan. Secure the wall mounting bracket directly to the building structure on a wood stud or wood post or beam. Do not install directly to drywall.

The wood stud or wood post and its support must be able to support the moving weight of the fan (at least 50 lbs.). The stud or wood beam must be supported directly by the building structure. Do NOT use any other wall mounting bracket other than the one provided.

WARNING

To avoid personal injury, the use of gloves may be necessary while handling fan parts with sharp edges.

To reduce the risk of fire or electrical shock, do not use the fan with any solid state speed control device or control fan speed with a full range dimmer switch.

To reduce the risk of personal injury or electrical shock, the fan should be installed where it will be out of reach of children. The fan is an electric product NOT a toy. To avoid risk of fire, burns, personal injury and electric shock it should not be played with or placed where small children can reach it.

To reduce the risk of personal injury or electrical shock, do not operate the fan if the cord or plug is frayed or broken.

To reduce the risk of fire, avoid the use of an extension cord. **If** an extension cord is used, it **must** be UL- or ETL-listed; **NEVER** use more than one extension cord to operate the fan. **NEVER** use with an extension cord unless the plug can be fully inserted. **DO NOT** alter the plug.

To reduce the risk of personal injury, use **only** parts provided with this fan. **The use of parts OTHER than those provided with this fan will void the warranty.**

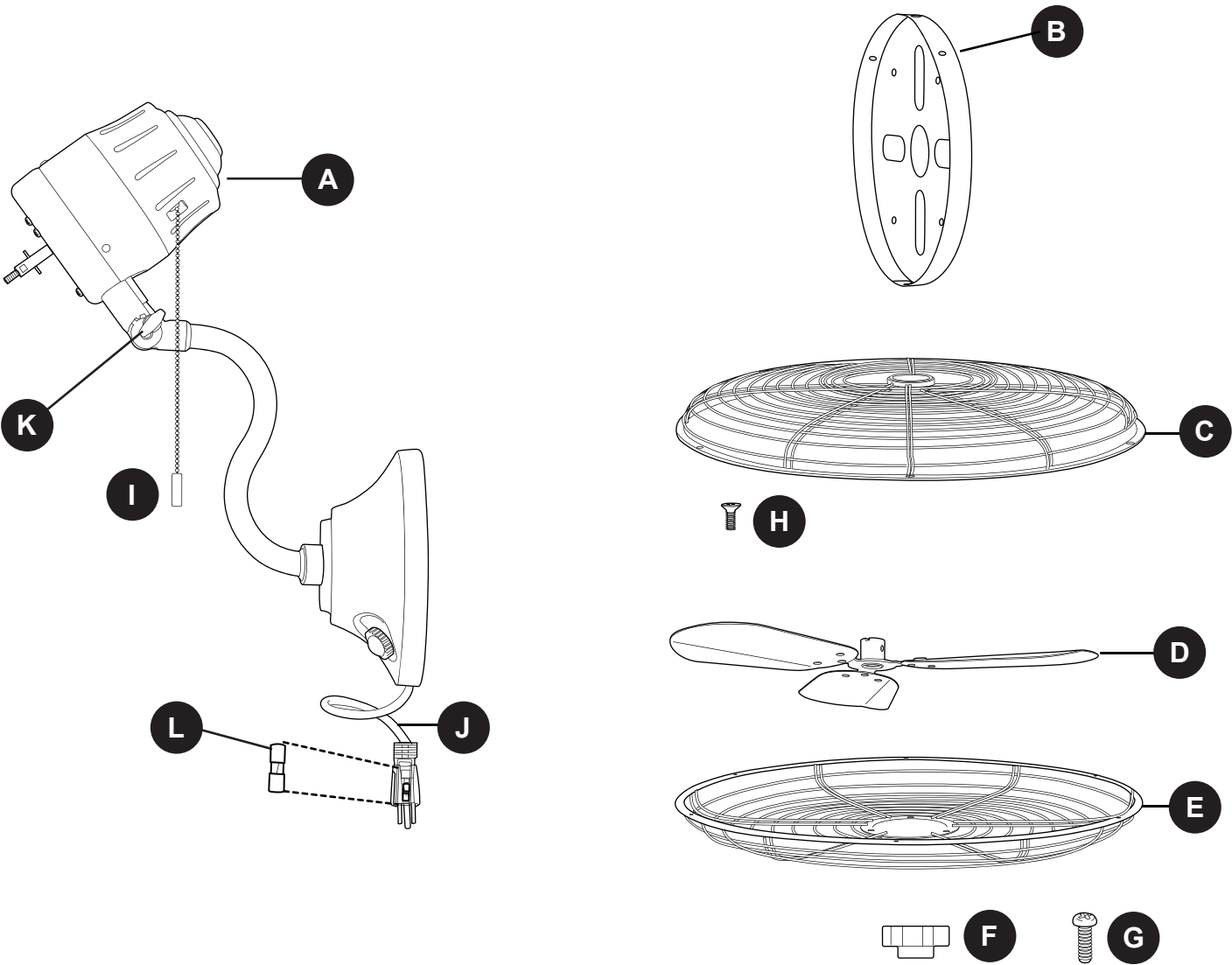
CAUTION

Before proceeding, be sure to shut off electricity at main switch or circuit breaker in order to avoid electrical shock.

Carefully check all screws, bolts and nuts on fan assembly to ensure that they are secured.

Due to the bulkiness of the fan assembly, it is advisable to seek the help of another person in order to install the fan assembly in the safest, most efficient manner.

PACKAGE CONTENTS



PART	DESCRIPTION	QUANTITY
A	Fan Assembly	1
B	Wall Mounting Bracket (preassembled)	1
C	Front Cage	1
D	Blade Assembly	1
E	Back Cage	1
F	Blade Assembly Nut (preassembled)	1
G	Back Cage Screw (preassembled)	3

PART	DESCRIPTION	QUANTITY
H	Front Cage Screw (preassembled)	6
I	Pull Chain (preassembled)	1
J	Power Cord (preassembled)	1
K	Decorative Nut (preassembled)	1
L	Fuse (included)	1

⚠ IMPORTANT REMINDER: You must use the parts provided with this fan for proper installation and safety.

HARDWARE CONTENTS (shown actual size)

AA



Wood Screw

Qty. 4
+ 1 extra

PREPARATION

Before beginning assembly of product, make sure all parts are present. Place motor on carpet or on foam to avoid damage to finish. Compare parts with package contents list and hardware contents list. If any part is missing or damaged, do not attempt to assemble the product.

Estimated Assembly Time: 90 minutes

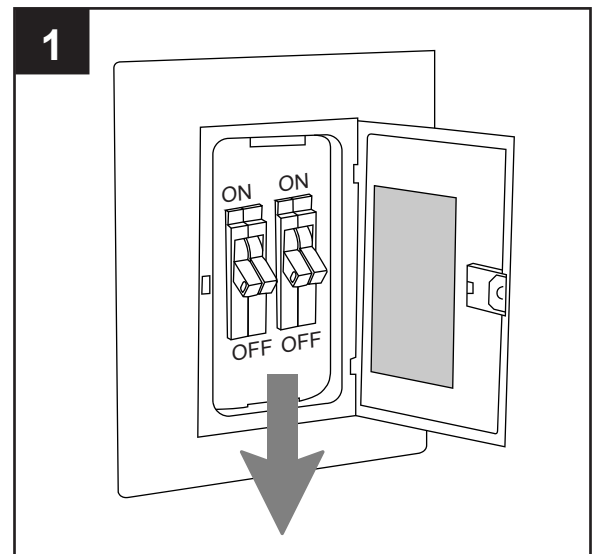
Tools Required for Assembly (not included): Phillips Screwdriver, Drill, Drill Bit, Stud Finder, Flathead Screwdriver, Pliers, Wrench, Safety Glasses, Tape Measure and Stepladder

Helpful Tools (not included): Level, Pencil, Do-It-Yourself and Wiring Handbook

ASSEMBLY INSTRUCTIONS

1. Turn off circuit breakers and wall switch to the fan supply line leads.

⚠ DANGER: Failure to disconnect power supply prior to installation may result in serious injury or death.



ASSEMBLY INSTRUCTIONS

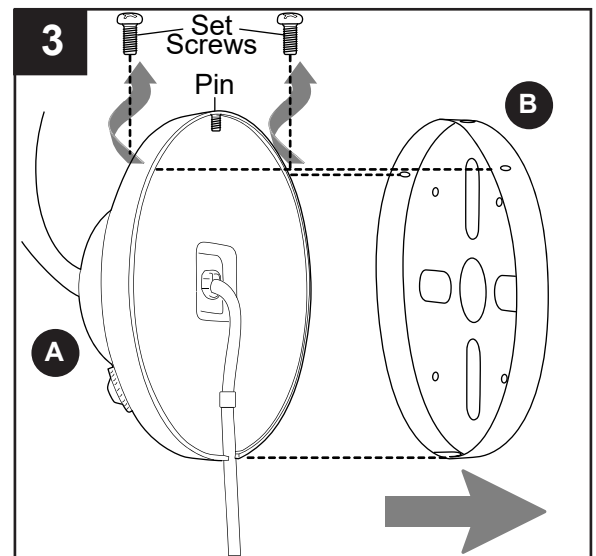
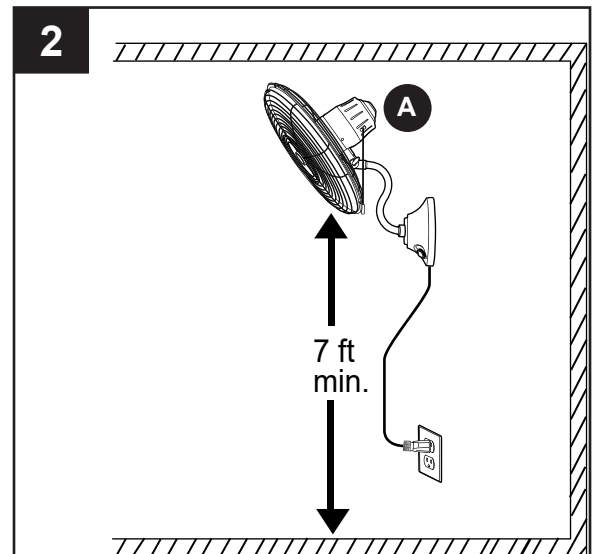
- This fan assembly (A) can only be mounted on an indoor wall or on an enclosed porch or enclosed patio wall.

To prevent personal injury and damage, ensure that the hanging location allows the fan assembly (A) a clearance of 7 ft. from the floor to prevent accidental contact with the blade.

⚠ CAUTION: If you are going to attach the fan assembly (A) to a wood stud or wood post, the stud or wood post must be wide enough and thick enough to sustain the wall mounting bracket (B) and the weight of the fan assembly (A).

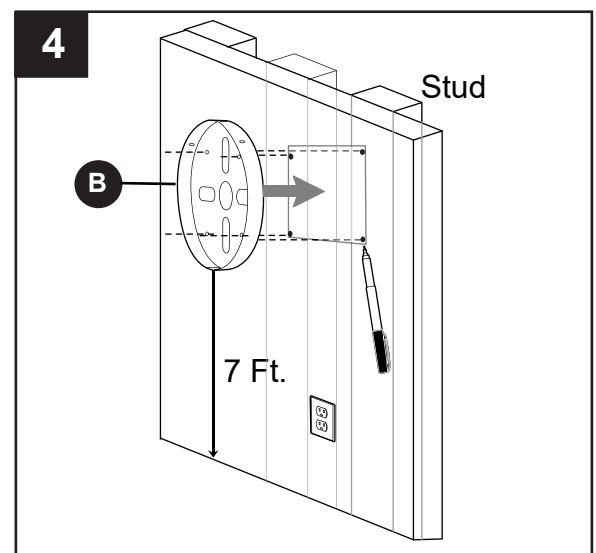
- Remove wall mounting bracket (B) from fan assembly (A) by removing two set screws at top of fan assembly (A).

Save set screws for later use.



- Determine the approximate position of where you want the fan to be located on the wall. Then, locate the stud in the wall. Position wall mounting bracket (B) on wood stud or wood post and mark the location of the four holes using a pencil or a marker (not included).

⚠ WARNING: To reduce the risk of fire, electrical shock or personal injury, use all four mounting holes (two at the top and two at the bottom) in wall mounting bracket (B) when installing wall mounting bracket (B).



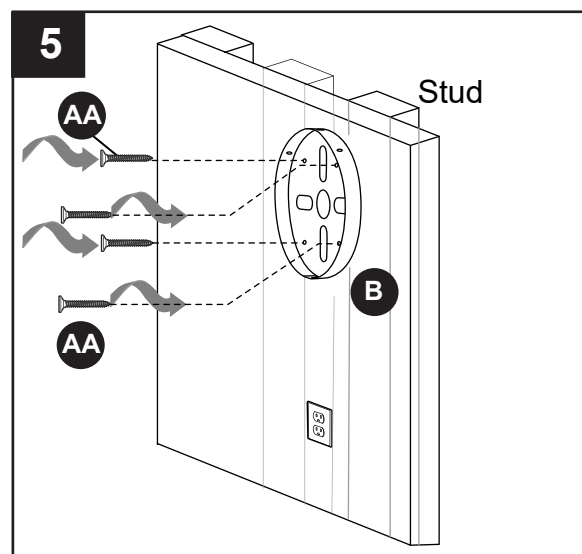
ASSEMBLY INSTRUCTIONS

5. Use drill bit (not included) to drill pilot holes at marked locations. Then, install wall mounting bracket (B) to mounting surface with wood screws (AA).

NOTE: Top of wall mounting bracket (B) is labeled ***THIS SIDE UP***.

! WARNING: It is very important that you use the proper hardware when installing the wall mounting bracket (B) as this will support the fan assembly (A).

! DANGER: Make sure the wall mounting bracket is securely attached to the building structure and can support the full weight of the fan. Failure to do this can result in serious injury or death.



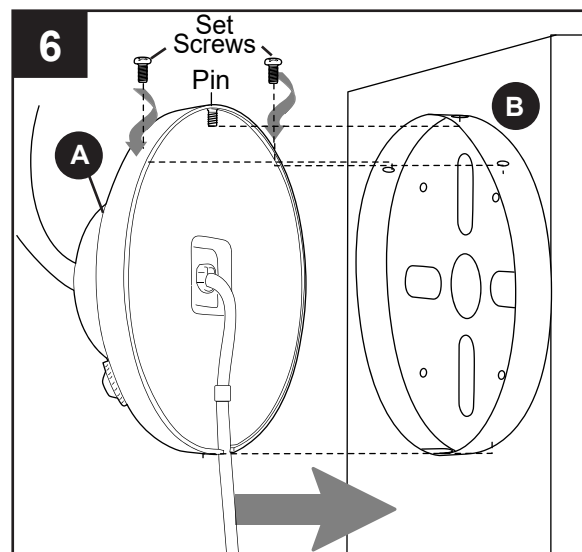
Hardware Used

AA Wood Screw  x 4

6. With the wall mounting bracket (B) secured to the wall and able to support the fan assembly (A), you are now ready to hang the fan assembly (A).

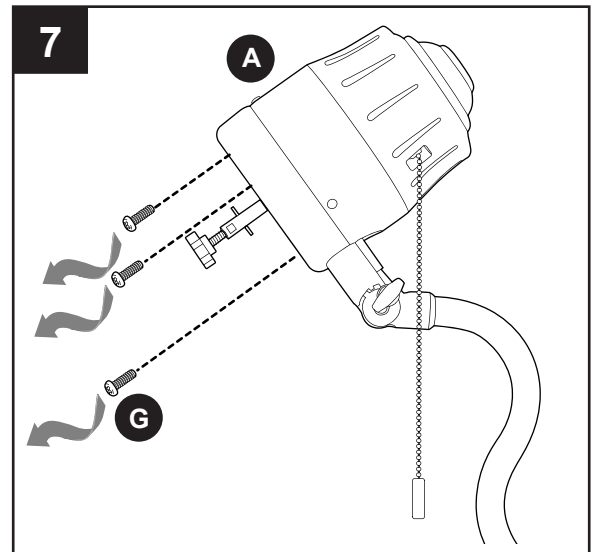
Grab the fan assembly (A) firmly with two hands. Align pin at top of fan assembly (A) with hole at top of wall mounting bracket (B).

Attach fan assembly (A) to wall mounting bracket (B) using the two set screws previously removed (Step 3, Page 6). Tighten securely.



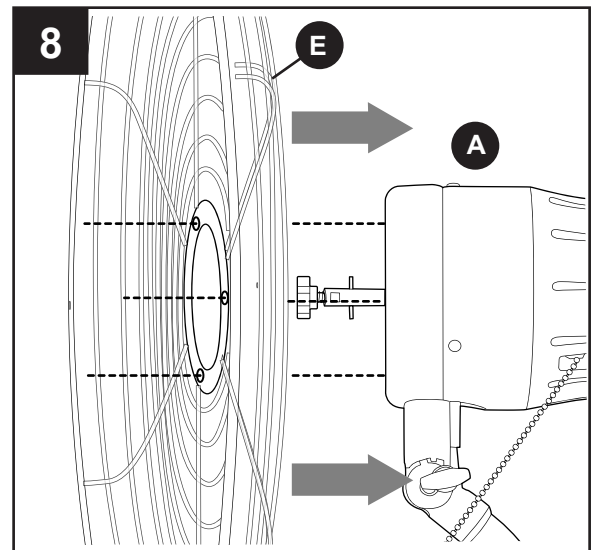
ASSEMBLY INSTRUCTIONS

7. Remove the three back cage screws (G) from the outer edge of the motor on fan assembly (A)

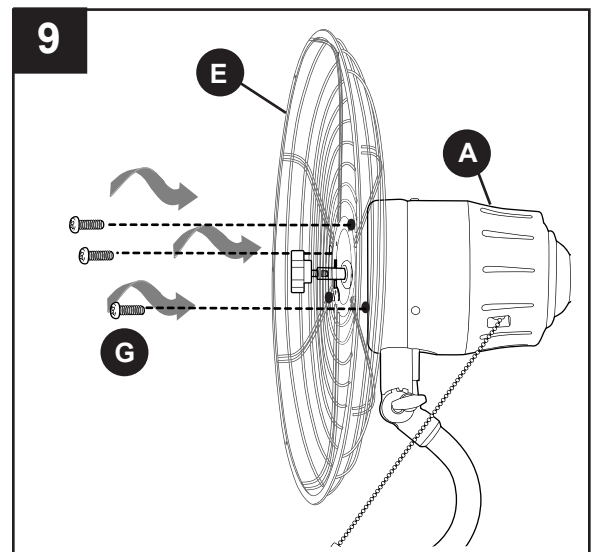


8. Align the three holes on the outer edge of the motor on fan assembly (A) with the three holes in the center of the back cage (E).

NOTE: Make sure the red dot in the center of fan assembly (A) is aligned with the red dot on the back cage (E).

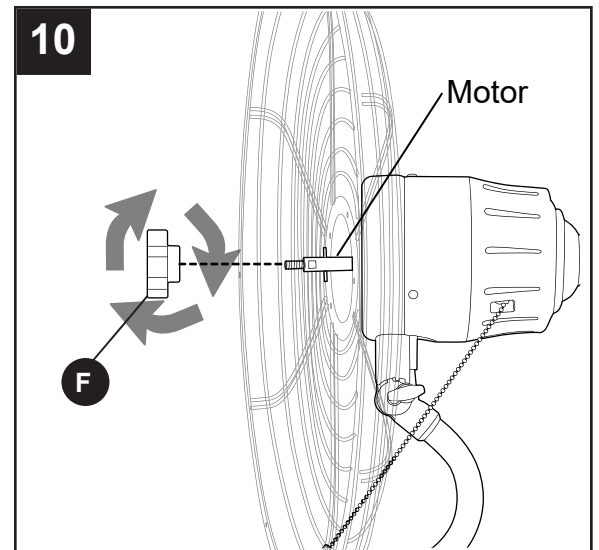


9. Install the three back cage screws (G) previously removed into each of the three holes in the center of the back cage (E) to secure back cage (E) to motor on fan assembly (A).

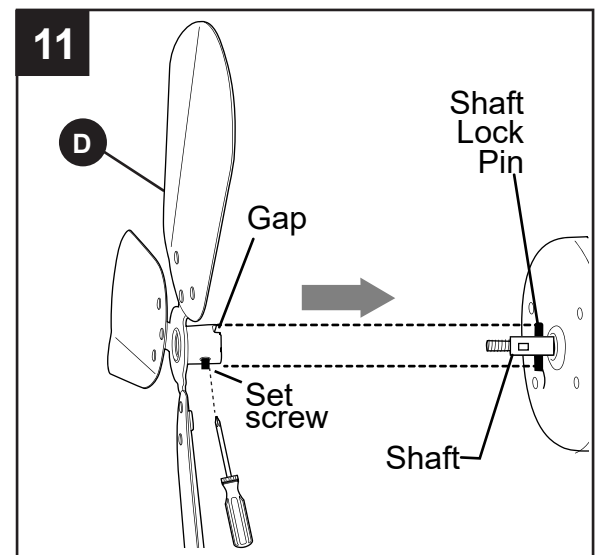


ASSEMBLY INSTRUCTIONS

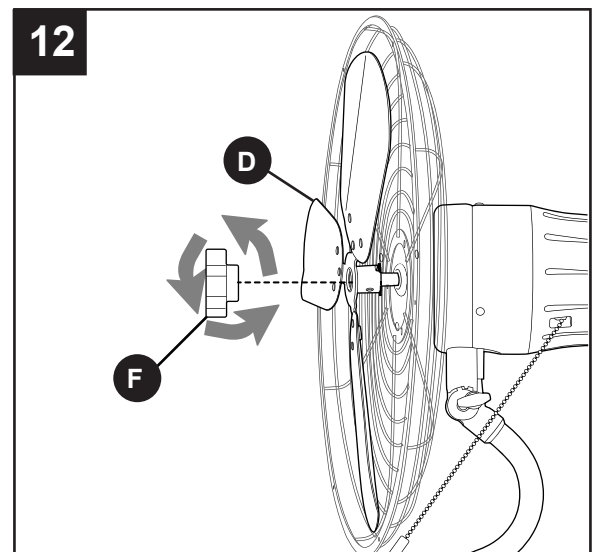
10. Turn blade assembly nut (F) clockwise to remove from shaft on fan motor.



11. Partially loosen preassembled set screw on blade assembly (D). Place blade assembly (D) over motor shaft and lock pin, making sure to align gap on the blade assembly (D) with lock pin on motor. Turn set screw located on the blade assembly (D) clockwise to secure blade assembly (D) to fan motor.



12. Re-attach blade assembly nut (F) into center of blade assembly (D) and turn *counterclockwise* to secure.



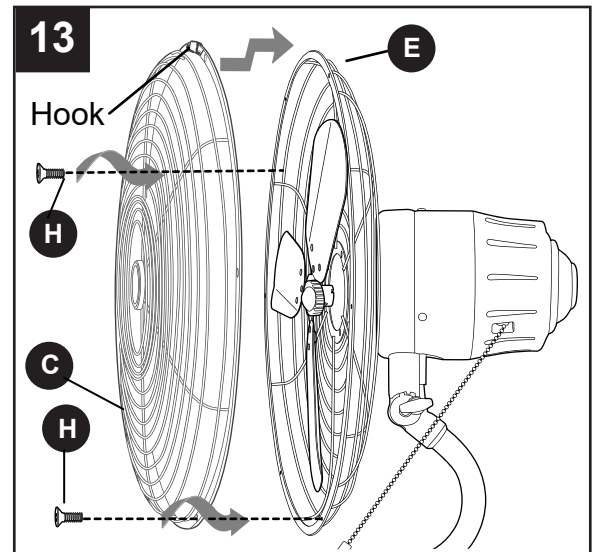
ASSEMBLY INSTRUCTIONS

13. Remove all six front cage screws (H) from edge of back cage (E).

Place hook at top of front cage (C) over edge at top of back cage (E). **NOTE:** Make sure hook engages and all front and back cage holes match up; this will allow the front cage (C) and the back cage (E) to hang together while you re-insert the front cage screws (H) into the the front and back cage holes.

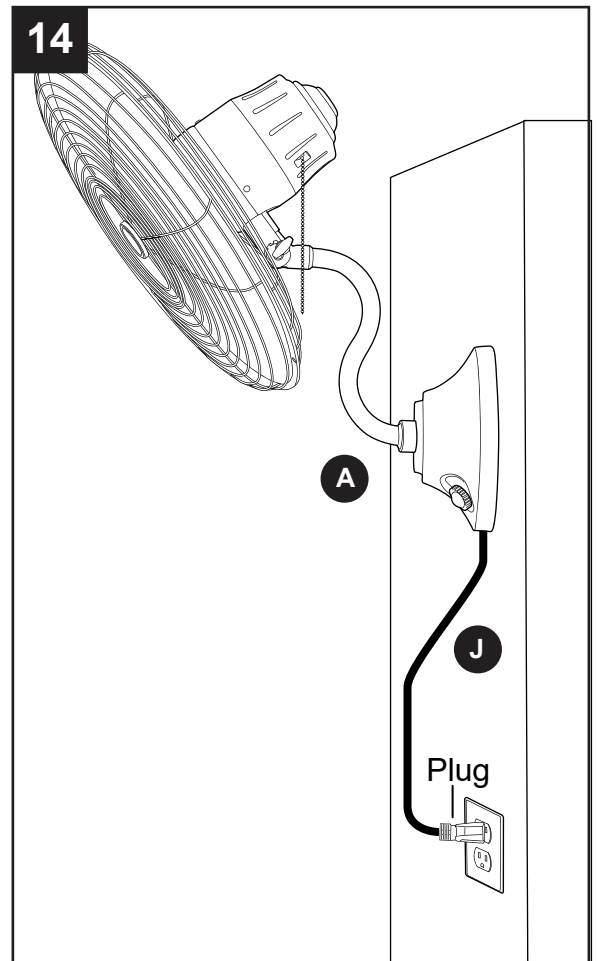
NOTE: Make sure the hook on front cage (C) aligns with the red dot on the back cage (E).

Insert front cage screws (H) into both holes at top of front cage (C), then tighten. Insert remaining front cage screws (H). Tighten front cage screws (H), alternating from one side of front cage (C) to the other until all front cage screws (H) are completely secured.



14. Insert power cord (J) preassembled on fan assembly (A) into proper wall outlet.

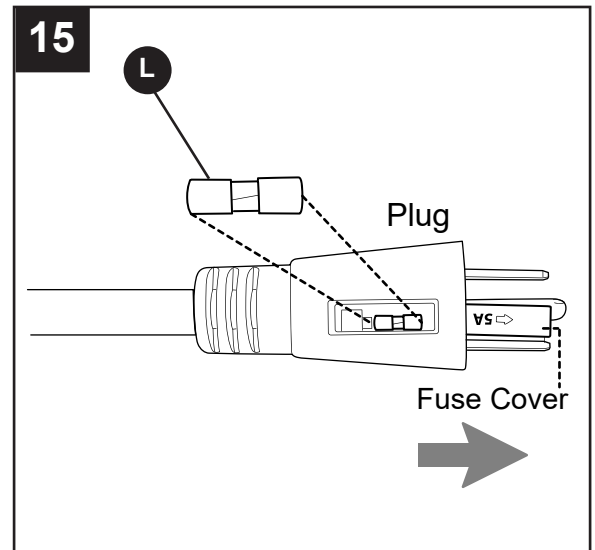
⚠ WARNING: The power cord is equipped with a three-prong grounded plug that must be inserted into a matching receptacle. Under no circumstances must the grounding prong be cut off the plug. Where a two-prong wall receptacle is encountered, it must be replaced with a properly grounded **three**-prong receptacle installed in accordance with the National Electrical Code and all applicable local codes and ordinances. This work must be done only by a qualified electrician, using copper wire only.



ASSEMBLY INSTRUCTIONS

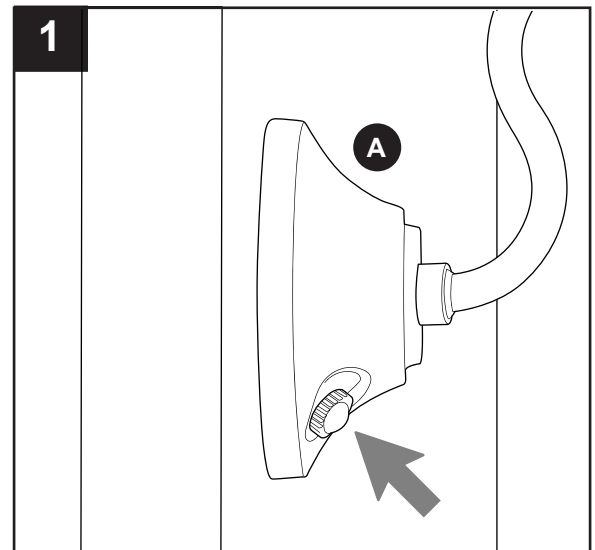
15. The three-prong plug is installed with a fuse (L) that is a vital safety device. A filament inside the fuse (L) is designed to melt and cut the circuit if the current gets too high. This prevents damage to your fan and the person using it and stops the power cord from overheating to the point where it could catch fire.

If you should need to replace the fuse (L), unplug fan. Locate the fuse cover at end of the plug on the power cord. Slide fuse cover open to expose fuse. Using needle-nose pliers (not included), remove fuse. Inspect fuse -- the small, glass tube with metal on each end -- to determine whether it will need to be replaced. [If the fuse (L) is blown, it will look dark and smudged or the visible wire inside will be broken.] Use a replacement fuse with a rating of 5 amps, 125 volts only, and insert fuse in between the metal brackets inside the fuse housing. Slide fuse cover shut.



OPERATING INSTRUCTIONS

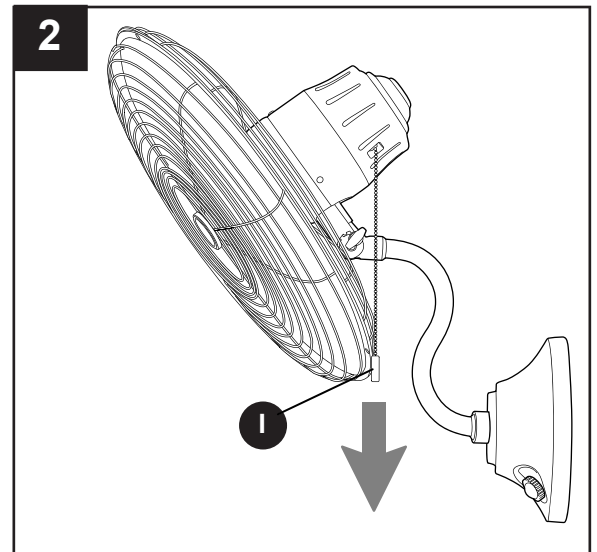
1. It is recommended you test the fan before finalizing installation. Make sure fan is plugged in properly. Test fan speeds with preassembled wall control. Start at the **Off** position (no blade movement). One turn of the dial will set the fan to HIGH (**H**). Two turns will set the fan to MEDIUM (**M**). Three turns will set the fan to LOW (**L**).



OPERATING INSTRUCTIONS

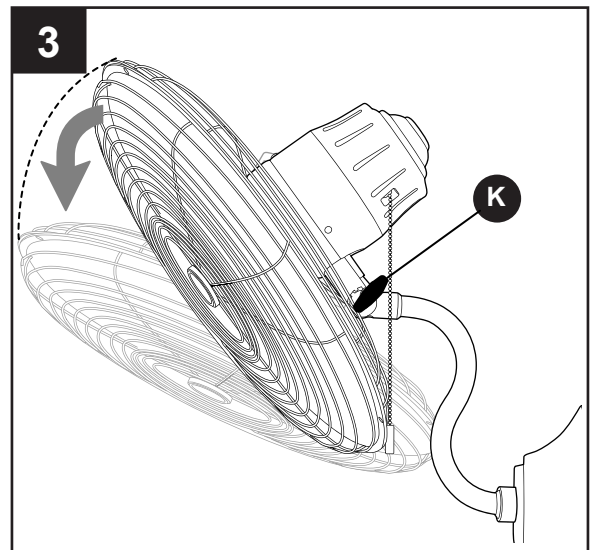
2. Test the oscillation function with the preassembled pull chain (I). Pull the pull chain (I) to start and stop.

If fan does not function properly, please refer to “**Troubleshooting**” section.



3. Use decorative nut (K) to adjust fan to the desired position. The fan can be angled up or down.

! CAUTION: To avoid personal injury or damage to the fan, the fan **MUST BE TURNED OFF** before adjusting.



CARE AND MAINTENANCE

At least twice each year tighten all screws on fan assembly and front cage. Clean fan assembly with only a soft brush or lint-free cloth to avoid scratching the finish.

IMPORTANT: Unplug power cord before beginning any maintenance.

TROUBLESHOOTING

⚠ WARNING: Before beginning work, shut off the power supply to avoid electrical shock.

PROBLEM	POSSIBLE CAUSE	CORRECTIVE ACTION
Fan does not move.	Power is off or fuse is blown.	Turn power on or check fuse.
Noisy operation.	Fan is new.	Allow fan a “break in” period of a few days, especially when running the fan at Medium and High speeds.
Excessive wobbling.	1. Fan not securely mounted. 2. Set screw on blade assembly is not tightened properly.	1. Turn power off. Verify wall mounting bracket is secure. 2. Remove front cage screws and tighten blade assembly set screw securely.

LIMITED LIFETIME WARRANTY

Set forth below, the manufacturer warrants the fan motor for this ceiling fan to be free from defects in workmanship and material for the life of the product. Also, subject to the limitations below, the manufacturer warrants all ceiling fan parts (“ceiling fan parts” excludes the motor and parts made in whole or in part with glass) to be free from defects in workmanship and material for a period of one year after the date of purchase by the original purchaser at retail.

All claims must be made by the original purchaser, whether such purchaser purchased the product through a store or contractor. Ceiling fan part defects must be reported within the first year from the date of purchase. Parts made in whole or in part with glass and the finishes of metal and other surfaces are not warranted.

Purchasers are responsible for all costs of removing and reinstalling the product. Any damage to any part caused by ordinary wear and tear, accident, misuse, or improper installation, is not covered by this warranty. The manufacturer assumes no responsibility whatsoever for fan installation. Any service performed by a non-licensed electrician will render the warranty invalid.

The manufacturer’s sole responsibility shall be to repair or replace the motor, parts, or product within the terms stated above. The manufacturer shall not be liable for any loss or damage of any kind, including any incidental or consequential damages resulting directly or indirectly, from any breach of warranty, express or implied, or any other failure of this product. Some states do not allow the exclusion or limitation of incidental or consequential damages so this limitation may not apply to you.

If the original purchaser ceases to own the fan, this warranty is voided.

Should the purchaser encounter a problem with your fan related to defects in workmanship or materials within the warranty period associated with the defective part, the manufacturer agrees to replace the defective part without charge, or at its option, to replace the ceiling fan with a comparable or superior model.

The manufacturer’s warranties are limited to the written warranties set out in this ceiling fan limited lifetime warranty. All other express and implied warranties, including, without limitation, the implied warranty of fitness for a particular purpose and the implied warranty of merchantability are disclaimed. Some states do not allow the disclaimer of implied warranties, so this disclaimer may not apply to you.